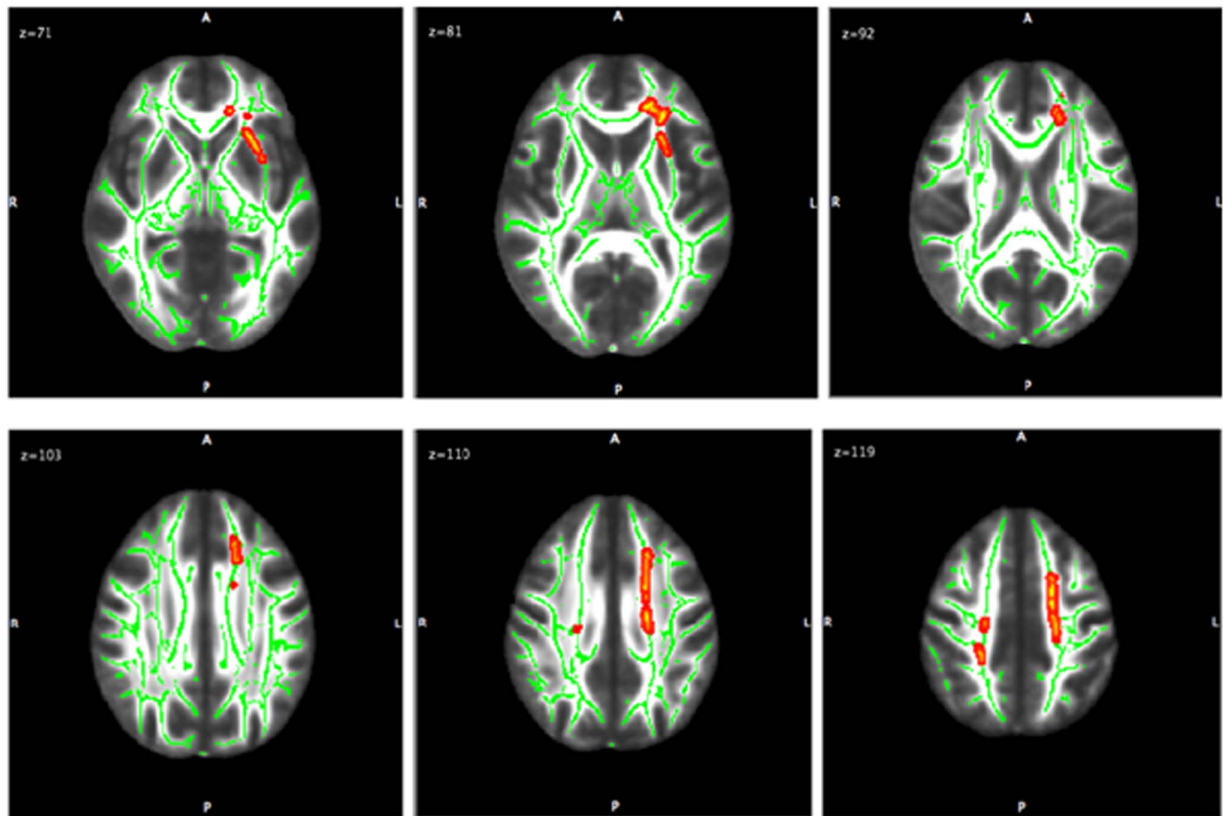
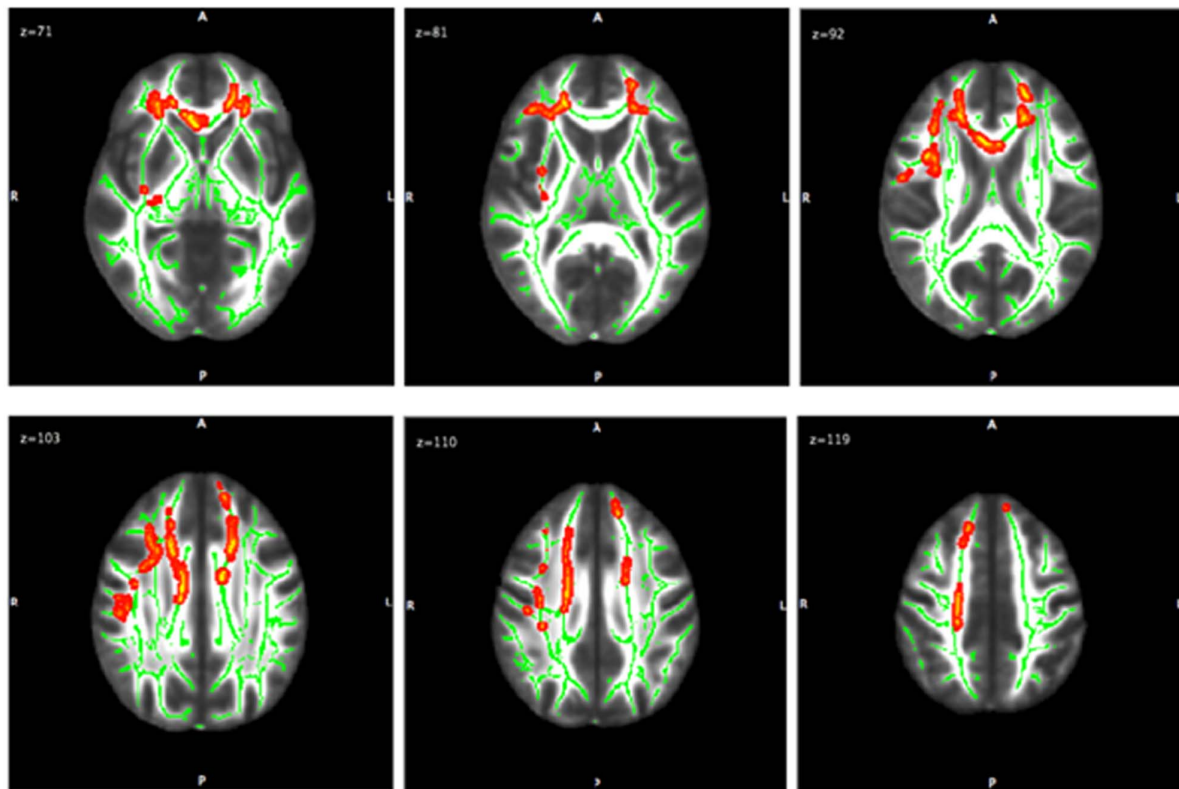


## Online supplement



**Fig. DS1** A comparison of fractional anisotropy findings in the major depressive disorder and control groups.

Axial slices of the cohort's mean fractional anisotropy skeleton (green) overlaid with red clusters depicting significantly lower fractional anisotropy values in the major depressive disorder group compared with the control group (family-wise error-corrected  $P < 0.05$ ). L, left; R, right.



**Fig. DS2** Negative correlations between fractional anisotropy values and cortisol levels in the major depressive disorder group.

Axial slices of the cohort's mean fractional anisotropy skeleton (green) overlaid with red clusters depicting significantly negative correlations between the fractional anisotropy values and serum cortisol levels in the major depressive disorder group (family-wise error-corrected  $P < 0.05$ ). L, left; R, right.