

Supplementary material for:

Beseres Pollack, J. & Palmer, T.A. (2020) *Crassostrea virginica* dredge efficiency in Texas estuaries.  
*Experimental Results*

**Summary statistics of oyster variables, sediment grain size components and water quality variables.**

<b>Variable</b>	<b>N</b>	<b>Mean</b>	<b>Std Dev</b>	<b>Minimum</b>	<b>Maximum</b>
Dredge volume dead (L m <sup>-2</sup> )	19	0.07	0.06	0.00	0.21
Dredge volume live (L m <sup>-2</sup> )	19	0.09	0.07	0.01	0.21
Dredge volume total (L m <sup>-2</sup> )	19	0.16	0.11	0.02	0.42
Dredge n live (n m <sup>-2</sup> )	19	2.80	3.33	0.07	12.72
Dredge n dead (n m <sup>-2</sup> )	18	3.67	3.77	0.11	12.14
Dredge n total (n m <sup>-2</sup> )	18	6.35	6.44	0.66	21.70
Std. Error Dredge n live (n m <sup>-2</sup> )	19	0.73	0.68	0.04	2.16
Quadrat volume dead (L m <sup>-2</sup> )	19	1.53	1.49	0.3	6.67
Quadrat volume live (L m <sup>-2</sup> )	19	0.82	1.01	0	3.93
Quadrat volume total (L m <sup>-2</sup> )	19	2.34	1.85	0.4	7.33
Quadrat n live (n m <sup>-2</sup> )	19	20.91	22.38	0	71.33
Quadrat n dead (n m <sup>-2</sup> )	19	83.04	52.47	11.33	184.67
Quadrat n total (n m <sup>-2</sup> )	19	103.95	65.45	11.33	220
Std. Error Quadrat n live (n m <sup>-2</sup> )	19	5.23	4.87	0	17.09
Mud (%)	19	11.58	18.40	0	65
Sand (%)	19	0	0	0	0
Shell Hash (%)	19	79.02	31.82	6.67	100
Whole Shell (%)	19	9.58	19.87	0	80
Depth (m)	19	0.85	0.41	0.2	1.9
Salinity	19	15.86	4.33	9.01	24.14

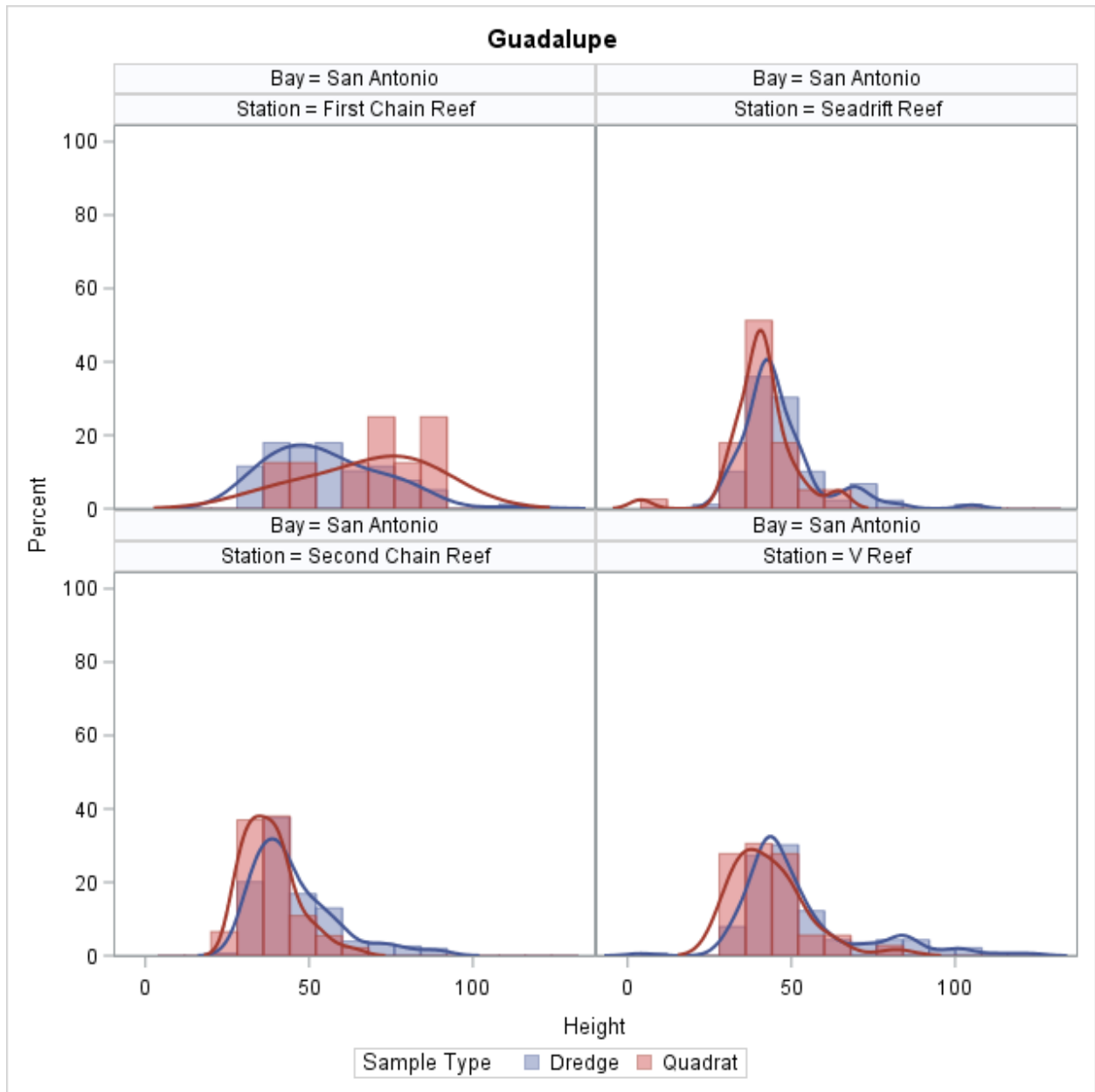
**Pearson correlations of dredge efficiency with other oyster variables, sediment grain size components and water quality variables.**

Significant relationships are bolded.

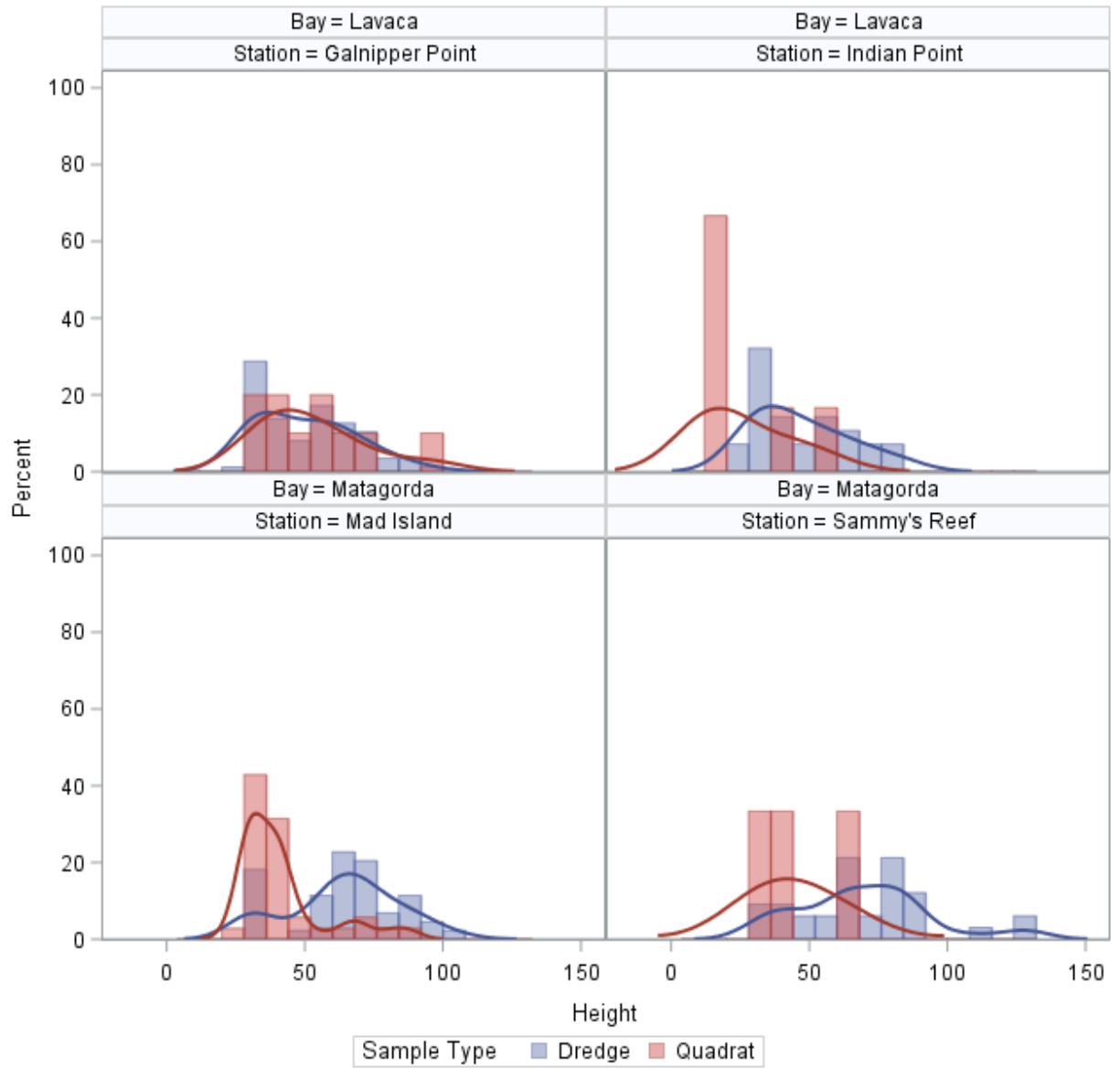
Variable	Pearson Correlation Coefficients Prob >  r  under H0: Rho=0 Number of Observations
Dredge volume dead (L m <sup>-2</sup> )	0.05507 0.8282 18
Dredge volume live (L m <sup>-2</sup> )	0.19682 0.4337 18
Dredge volume total (L m <sup>-2</sup> )	0.16289 0.5184 18
Dredge n live (n m <sup>-2</sup> )	0.20029 0.4255 18
Dredge n dead (n m <sup>-2</sup> )	0.098 0.7083 17
Dredge n total (n m <sup>-2</sup> )	0.18234 0.4836 17
Std. Error Dredge n live (n m <sup>-2</sup> )	0.25463 0.3079 18
Quadrat volume dead (L m <sup>-2</sup> )	-0.39684 0.103 18
Quadrat volume live (L m <sup>-2</sup> )	-0.30785 0.214 18
<b>Quadrat volume total (L m<sup>-2</sup>)</b>	<b>-0.4886</b> <b>0.0396</b> <b>18</b>
Quadrat n live (n m <sup>-2</sup> )	-0.2793 0.2617 18
<b>Quadrat n dead (n m<sup>-2</sup>)</b>	<b>-0.51409</b> <b>0.0291</b> <b>18</b>
<b>Quadrat n total (n m<sup>-2</sup>)</b>	<b>-0.51299</b> <b>0.0295</b> <b>18</b>
Std. Error Quadrat n live (n m <sup>-2</sup> )	-0.33286

Variable	Pearson Correlation Coefficients	
	Prob >  r  under H0: Rho=0	Number of Observations
	0.1771	18
Mud (%)	-0.07345	0.7721 18
Shell Hash (%)	0.26661	0.2849 18
Whole Shell (%)	-0.36125	0.1408 18
Depth (m)	-0.15544	0.538 18
Salinity	0.28889	0.245 18

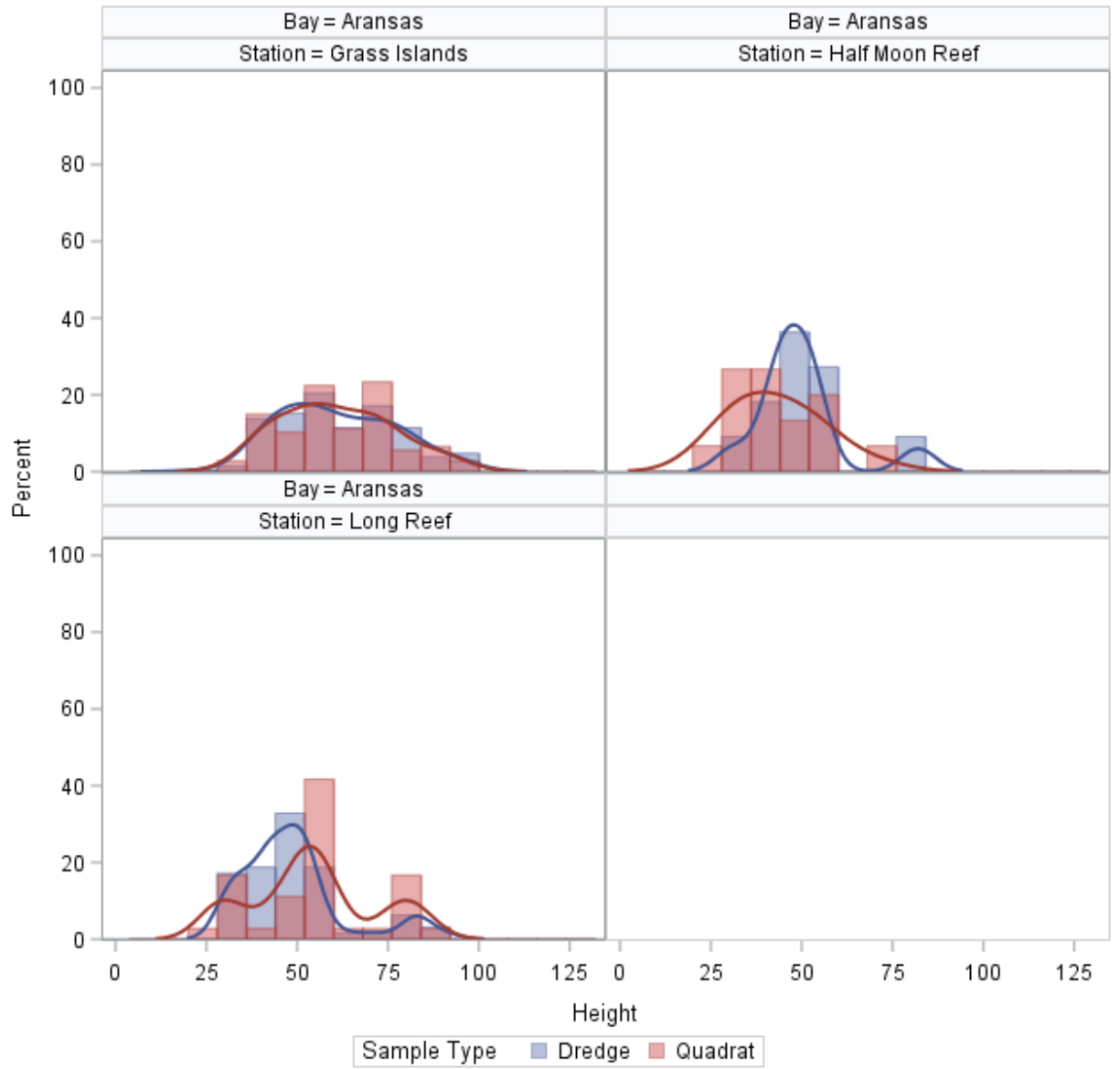
Histogram and density plots at each station within each estuary.



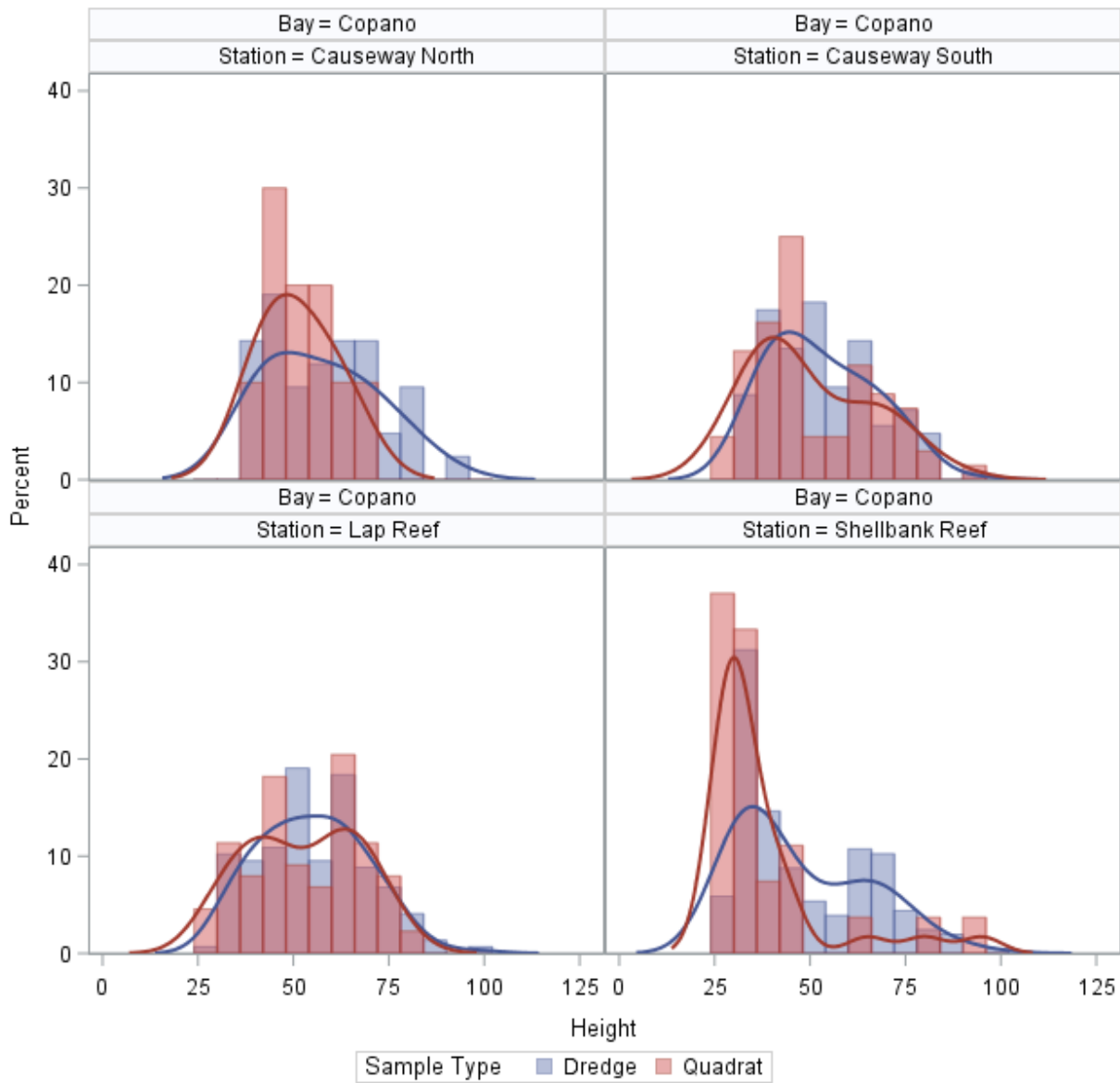
### Lavaca-Colorado



### Mission-Aransas



### Mission-Aransas



### Trinity-San Jacinto

