

Supplementary Material

**Surface plasmon resonance-enhanced photoelectrochemical sensor for detection of an organophosphate pesticide chlorpyrifos**

Treenet Thepudom<sup>1,2</sup>, Chutiparn Lertvachirapaiboon<sup>1</sup>, Kazunari Shinbo<sup>1</sup>, Keizo Kato<sup>1</sup>, Futao Kaneko<sup>1</sup>, Teerakiat Kerdcharoen<sup>3</sup> and Akira Baba<sup>1\*</sup>

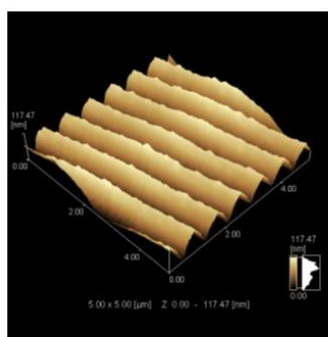
<sup>1</sup>*Graduate School of Science and Technology and Center for Transdisciplinary Research, Niigata University, 8050 Ikarashi 2-Nocho, Nishi-ku, Niigata 950-2181, Japan*

<sup>2</sup>*Materials Science and Engineering Program, Faculty of Science, Mahidol University, 272 Thungphayathai, Ratchathewi, Bangkok 10400, Thailand*

<sup>3</sup>*Department of Physics, Faculty of Science, Mahidol University, 272 Thungphayathai, Ratchathewi, Bangkok 10400, Thailand*

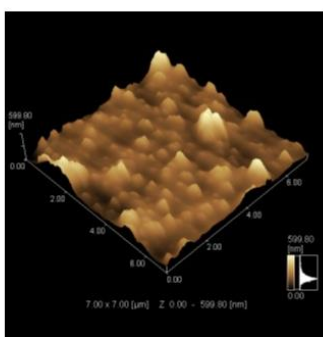
\*E-mail: ababa@eng.niigata-u.ac.jp

## Supplementary Material



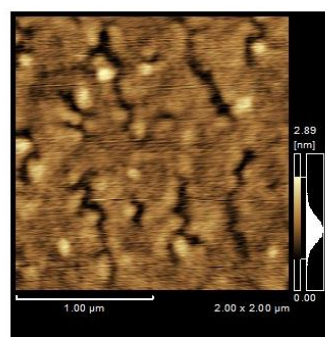
(a)

AFM image of Au grating structure.



(b)

AFM image of modified-cathode.



(c)

AFM image of Au nanoparticles on flated-Au structure.

**Figure. S1.** Atomic-force microscopy images of (a) the gold-coated grating layer, (b) the overall structure of the modified cathode, and (c) AuNPs on a flat gold structure.