

Supporting Information

Colon cancer cells adhesion on polymeric nanostructured surfaces

Angelo Accardo^{a,*}, Victoria Shalabaeva^b and Rosanna La Rocca^b

^aLAAS-CNRS, Université de Toulouse, CNRS, 7 Avenue du Colonel Roche, Toulouse, F-31400, France

^bIstituto Italiano di Tecnologia, Via Morego, Genova, 16163, Italy

*Corresponding author's email: aaccardo@laas.fr

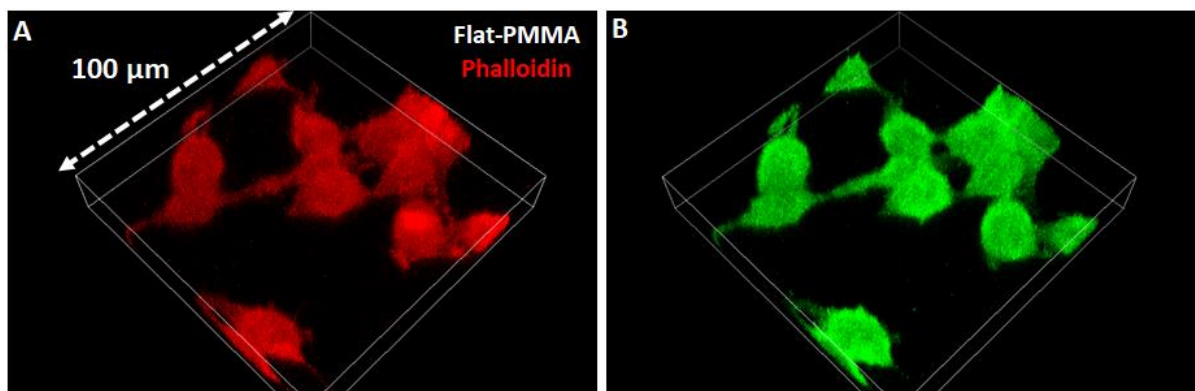


Figure S1. Phalloidin (A) and Vinculin (B) expression of HCT116 cells cultured for 48 hours on flat PMMA surfaces.