

Figure S1. Estimated Sex Difference in Gompertz–intercept ($\ln a$) for Single–year Birth Cohorts with 95% C.I.

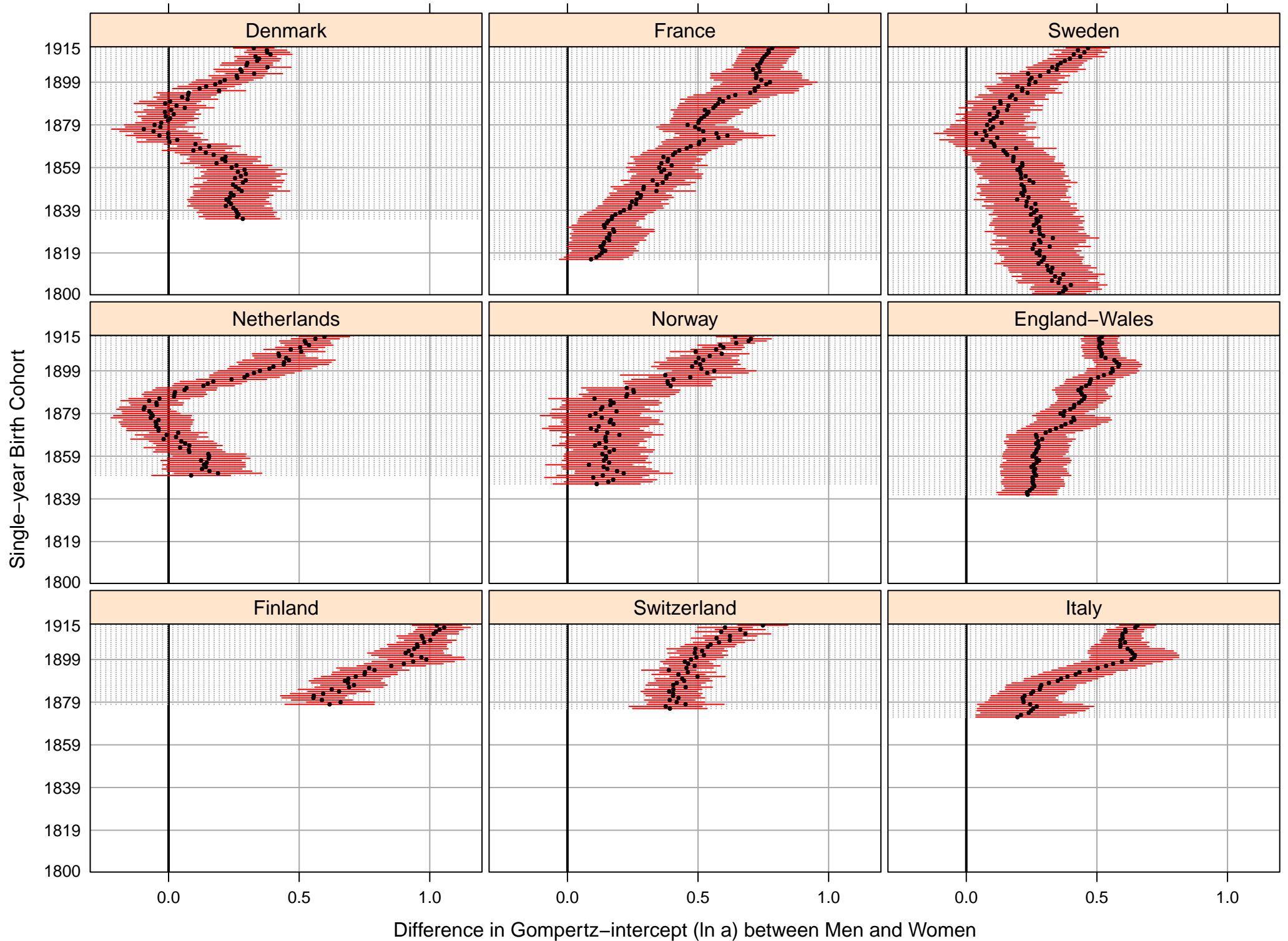


Figure S2. Estimated Sex Difference in Gompertz-slope (b) for Single-year Birth Cohorts with 95% C.I.

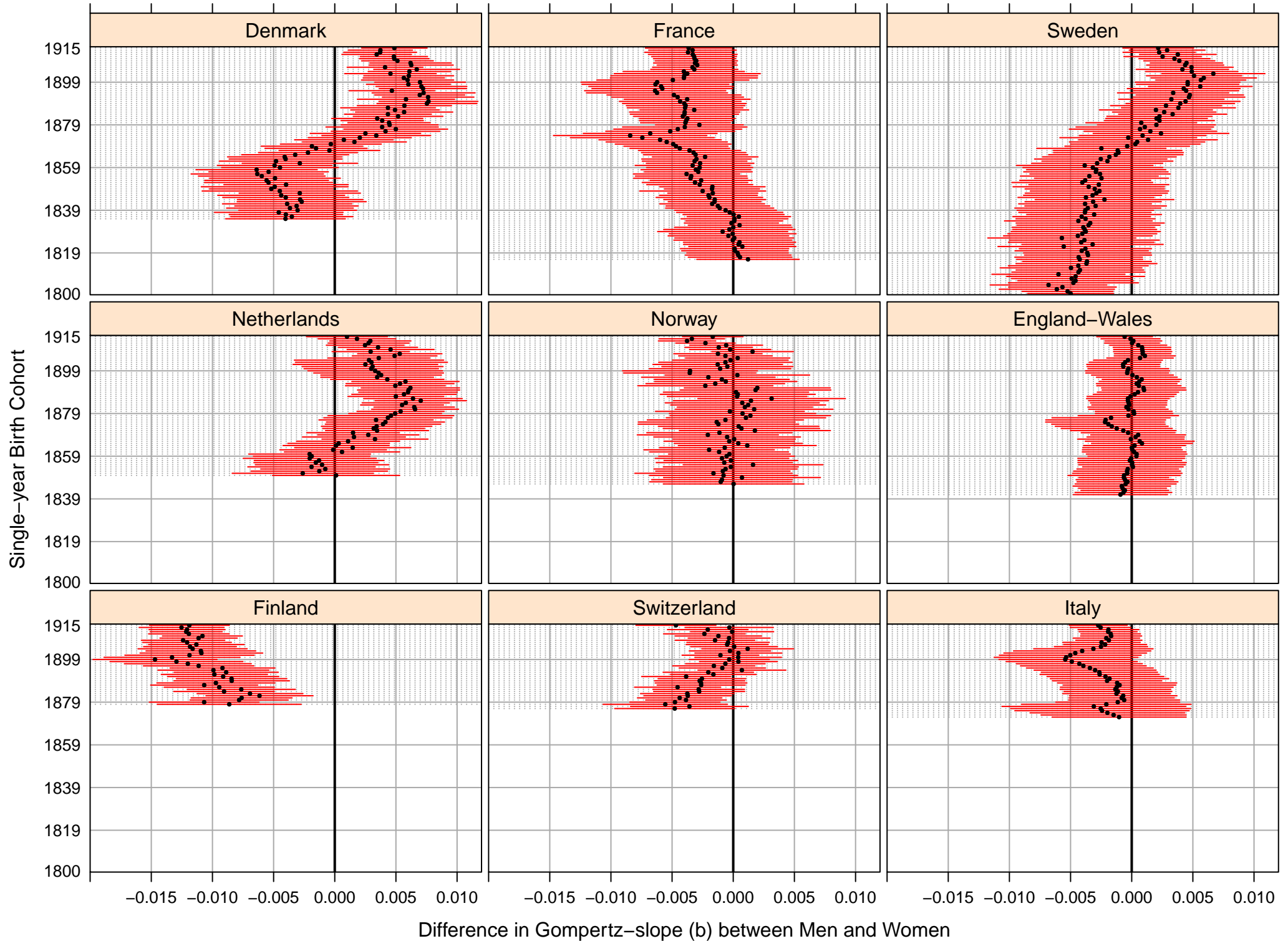


Figure S3. Association between Gompertz-slope and Early-life Mortality (q_{0-10}) by Age and Sex

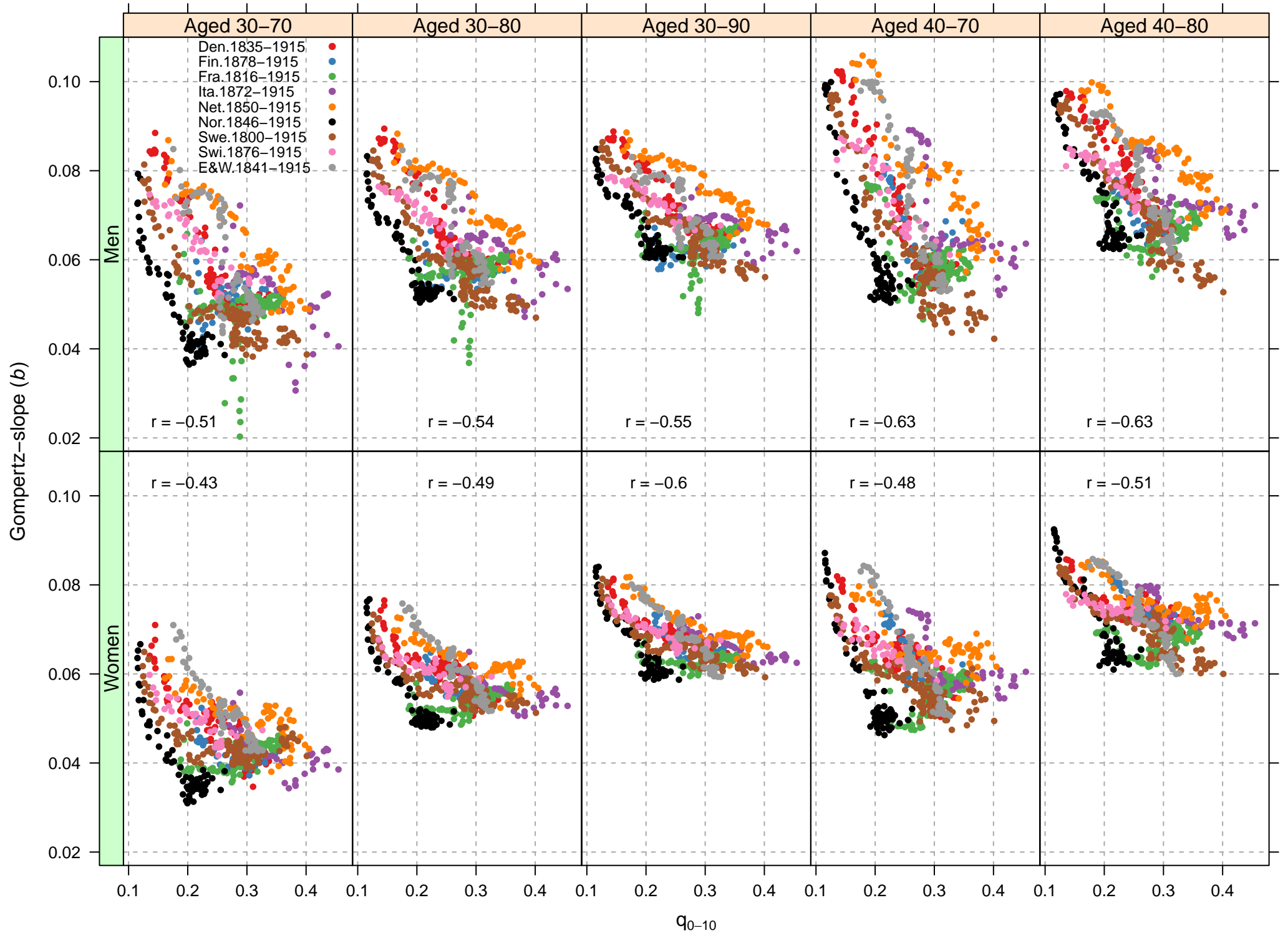


Figure S4. Association between Gompertz–intercept and Early–life Mortality (q_{0-10}) by Age and Sex

