

**Online Appendices for  
“Traditional Gender Attitudes, Nativism, and Support for the Radical Right”**

**Olyvia R. Christley**

Appendix A: List of Parties	2
Appendix B: Logistic Regression Models	3
Appendix C: Predictive Probability Tables	6
Appendix D: <i>interflex</i> Analyses	8

## Appendix A: List of Parties

### Radical Right Parties

Albania: Albanian National Front  
 Austria: Freedom Party of Austria  
 Bulgaria: Attack  
 Croatia: Croatian Party of Rights  
 Czechia: Freedom and Direct Democracy  
 Denmark: Danish People's Party  
 Estonia: Conservative People's Party of Estonia/EKRE  
 Finland: Finns Party  
 France: National Front/National Rally  
 Germany: Alternative for Germany  
 Great Britain: British National Party  
 Hungary: Fidesz; Jobbik  
 Iceland: Icelandic National Party; Progressive Party  
 Italy: Lega Nord/League  
 Lithuania: Order and Justice  
 Netherlands: Party for Freedom; Forum for Democracy  
 Norway: Progress Party  
 Poland: Law & Justice  
 Serbia: Serbian Radical Party  
 Slovakia: Slovak National Party; Kotleba/People's Party Our Slovakia  
 Slovenia: Slovenian Democratic Party  
 Sweden: Sweden Democrats  
 Switzerland: Christian Democratic Party; The Liberals

### Conservative Parties

Albania: Justice, Integration, and Unity  
 Austria: Austrian People's Party  
 Bulgaria: Citizens for European Development  
 Croatia: Croatian Democratic Union  
 Czechia: Civic Democratic Party  
 Denmark: Conservative People's Party; Venstre/Left, Denmark's Liberal Party  
 Estonia: Estonian Reform Party  
 Finland: Center Party; Christian Democrats  
 France: The Republicans  
 Germany: Christian Democratic Union  
 Great Britain: Conservative  
 Hungary: Christian Democratic People's Party  
 Iceland: Independence Party  
 Italy: Let's Go Italy/Forza Italia  
 Lithuania: Homeland Union; Lithuanian Christian Democrats  
 Netherlands: Christian Democratic Appeal  
 Norway: Conservative Party  
 Poland: Korwin  
 Serbia: Serbian Progressive Party  
 Slovakia: Freedom and Solidarity  
 Slovenia: New Slovenia - Christian People's Party  
 Sweden: Moderate Party  
 Switzerland: Swiss People's Party

## Appendix B: Logistic Regression Tables

### Table B1: Party Family as the Dependent Variable

	(1) Radical Right	(2) Conservative	(3) Radical Right	(4) Radical Right	(5) Radical Right	(6) Conservative
Gender Scale	0.729*** (0.077)	-0.669*** (0.062)	0.797*** (0.153)	1.248*** (0.148)	0.685*** (0.155)	0.013 (0.130)
Immigrant Attitudes			2.947*** (0.138)		2.804*** (0.140)	-0.091 (0.095)
Born Country				0.552*** (0.055)	0.332*** (0.058)	0.075* (0.044)
Authority Respect			-0.088*** (0.033)	-0.100*** (0.032)	-0.085*** (0.033)	-0.056** (0.025)
Democracy: Obey Rulers			0.026*** (0.009)	0.023** (0.009)	0.024** (0.009)	0.013* (0.007)
Tax Rich/ Subsidize Poor			0.025** (0.010)	0.027*** (0.010)	0.025** (0.010)	-0.044*** (0.007)
Religiosity			0.064 (0.042)	0.095** (0.041)	0.067 (0.042)	-0.242*** (0.033)
Sex			0.091* (0.054)	0.092* (0.052)	0.091* (0.054)	-0.003 (0.041)
Age			-0.044* (0.023)	-0.041* (0.022)	-0.043* (0.023)	0.074*** (0.018)
Low Education			0.712*** (0.087)	0.809*** (0.084)	0.678*** (0.088)	-0.027 (0.063)
Medium Education			0.628*** (0.066)	0.685*** (0.064)	0.609*** (0.067)	-0.026 (0.046)
Work Fulltime			0.143 (0.092)	0.120 (0.090)	0.130 (0.092)	-0.178** (0.070)
Work Part-time			-0.078 (0.131)	-0.148 (0.128)	-0.087 (0.132)	-0.270*** (0.097)
Retired			-0.152 (0.106)	-0.224** (0.103)	-0.168 (0.106)	-0.091 (0.080)
Homemaker			-0.246 (0.172)	-0.235 (0.168)	-0.264 (0.172)	0.054 (0.131)
Student			-0.160 (0.161)	-0.277* (0.156)	-0.163 (0.161)	-0.067 (0.123)

Unemployed			0.210 (0.155)	0.197 (0.151)	0.208 (0.155)	-0.299** (0.118)
Political Memberships			-0.151** (0.067)	-0.203*** (0.063)	-0.151** (0.067)	0.114** (0.055)
Parliament Confidence			0.211*** (0.034)	0.286*** (0.033)	0.217*** (0.034)	-0.298*** (0.028)
Ideology			0.329*** (0.013)	0.374*** (0.012)	0.326*** (0.013)	0.432*** (0.010)
Constant	-2.438*** (0.034)	-1.259*** (0.025)	-6.815*** (0.253)	-5.736*** (0.238)	-6.858*** (0.254)	-1.991*** (0.186)
Obs.	36015	36015	19775	20317	19743	19242
Pseudo R <sup>2</sup>	0.004	0.003	0.309	0.281	0.310	0.205
Country Dummies			Yes	Yes	Yes	Yes

---

Standard errors are in parenthesis  
 \*\*\*  $p < 0.01$ , \*\*  $p < 0.05$ , \*  $p < 0.1$

**Table B2: Logistic Regression Results (Sex\*Gender Attitudes Model)**

	(1) Radical Right
Gender Scale	0.544** (0.206)
Female*Gender Scale (Baseline)	
Male*Gender Scale	0.64 (0.250)
Constant	-6.738*** (0.268)
Obs.	19587
Controls	Yes

Standard errors are in parenthesis

\*\*\*  $p < 0.01$ , \*\*  $p < 0.05$ , \*  $p < 0.1$

## Appendix C: Predictive Probability Tables

**Table C1**  
 Predicted Probability of Radical Right Support =1 along Gender Scale

---

Predictive margins	Number of obs.	=	19,574
Model VCE: Robust			
Expression: Pr(Radical Right), predict()			
1._at	: Gender Scale	=	0
2._at	: Gender Scale	=	.04
3._at	: Gender Scale	=	.2
4._at	: Gender Scale	=	.36
5._at	: Gender Scale	=	.52
6._at	: Gender Scale	=	.64
7._at	: Gender Scale	=	.76
8._at	: Gender Scale	=	.88
9._at	: Gender Scale	=	1

	Delta-method					
	Margin	Std. Err.	z	P>z	[95% Conf.	Interval]
_at						
1	0.1181	0.005	26.190	0.000	0.111	0.129
2	0.1201	0.004	28.990	0.000	0.113	0.130
3	0.1286	0.003	46.960	0.000	0.124	0.134
4	0.1376	0.002	66.130	0.000	0.133	0.141
5	0.1470	0.003	45.770	0.000	0.139	0.151
6	0.1544	0.005	32.420	0.000	0.142	0.161
7	0.1621	0.006	24.580	0.000	0.146	0.171
8	0.1700	0.008	19.720	0.000	0.149	0.181
9	0.1783	0.010	16.480	0.000	0.152	0.192

---

**Table C2:**  
 Predicted Probability of Conservative Support =1 along Gender Scale

Predictive margins	Number of obs. = 19,242					
Model VCE: Robust						
Expression: Pr(Conservative), predict()						
1._at	: Gender Scale =	0				
2._at	: Gender Scale =	.04				
3._at	: Gender Scale =	.2				
4._at	: Gender Scale =	.36				
5._at	: Gender Scale =	.52				
6._at	: Gender Scale =	.64				
7._at	: Gender Scale =	.76				
8._at	: Gender Scale =	.88				
9._at	: Gender Scale =	1				
Delta-method						
	Margin	Std. Err.	z	P>z	[95% Conf.	Interval]
1	0.2396	0.006	39.070	0.000	0.228	0.252
2	0.2397	0.005	43.700	0.000	0.229	0.250
3	0.2399	0.003	73.270	0.000	0.234	0.246
4	0.2402	0.003	81.640	0.000	0.234	0.246
5	0.2405	0.005	49.150	0.000	0.231	0.250
6	0.2407	0.007	35.180	0.000	0.227	0.254
7	0.2409	0.009	27.010	0.000	0.223	0.258
8	0.2411	0.011	21.820	0.000	0.220	0.263
9	0.2413	0.013	18.270	0.000	0.215	0.267

Please contact the author for tables of the following models, which are too large to reproduce in this document:

- Predicted Probability of Radical Right =1 along Gender Scale and Born in Country Importance
- Predicted Probability of Radical Right =1 along Gender Scale and Immigration Attitudes

### Appendix D: *interflex* Analyses

Figure 1 provides confirmation that there is common support in my interactive model of immigration attitudes and gender attitudes as they relate to radical right support.

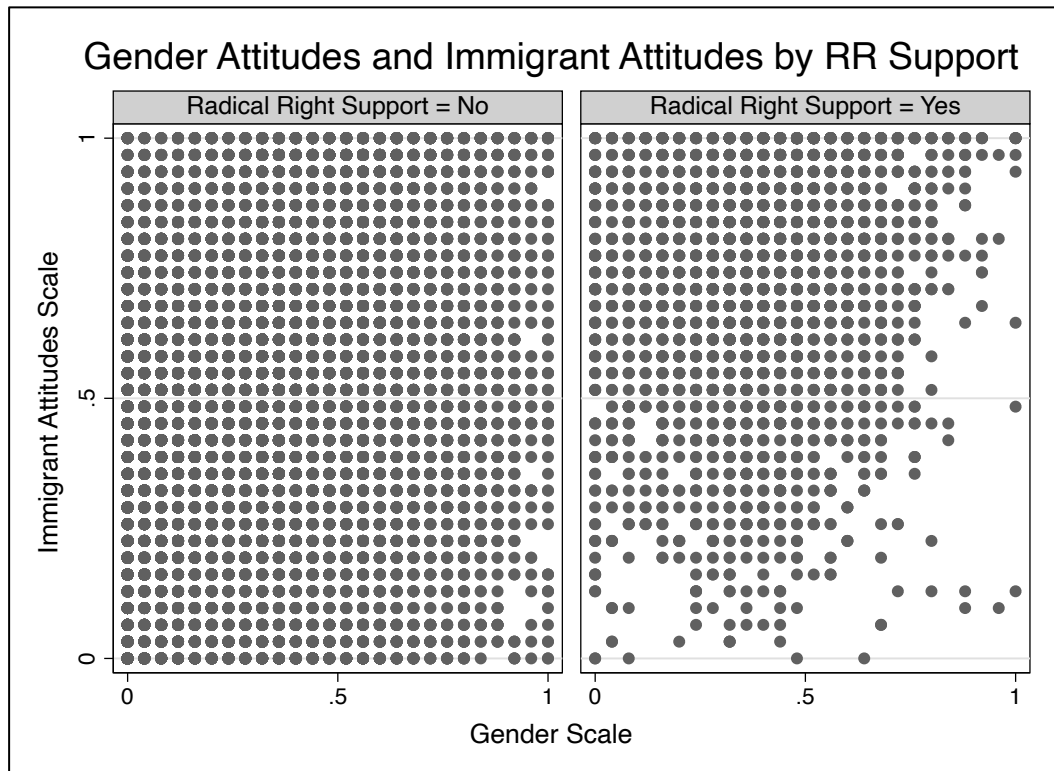


Figure 1

There are 954 individuals in the full dataset who score at the 99<sup>th</sup> percentile of xenophobia and can be also be classified as gender egalitarian (i.e. in the 25% percentile or below on the gender attitudes scale), which equates to roughly 3% of the sample.



Employing a kernel estimator on the same model presented in Figure 7 in the main body of the paper does not substantively change the results (see Figure 2 below). While the non-linear relationship is perhaps a bit starker overall than the linear relationship presented in the paper, the high-level takeaway is the same as in the linear model: the marginal effect of gender traditionalism on support for the radical right is greater, on average, for those with lower levels of xenophobia than those who harbor higher levels of xenophobia. Indeed, at the highest levels of xenophobia, high levels of gender traditionalism are associated with a decreased likelihood of supporting radical right parties.

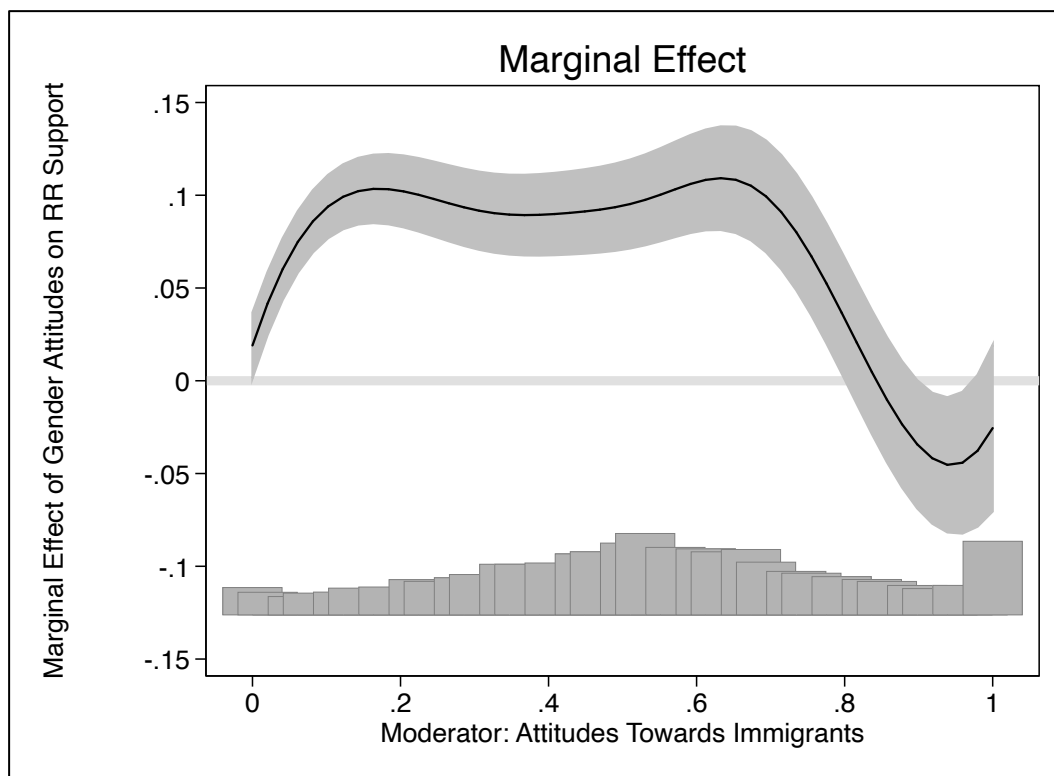


Figure 2