

## **Contract Work at Older Ages\***

**Katharine G. Abraham**

University of Maryland, IZA,  
and NBER

**Brad Hershbein**

Upjohn Institute and IZA

**Susan N. Houseman**

Upjohn Institute and IZA

December 2019

### **ONLINE APPENDICES**

---

\* The research reported herein was performed pursuant to grant RDR18000003 from the US Social Security Administration (SSA) funded as part of the Retirement and Disability Research Consortium. The opinions and conclusions expressed are solely those of the author(s) and do not represent the opinions or policy of SSA, any agency of the Federal Government, or NBER. Neither the United States Government nor any agency thereof, nor any of their employees, makes any warranty, express or implied, or assumes any legal liability or responsibility for the accuracy, completeness, or usefulness of the contents of this report. Reference herein to any specific commercial product, process or service by trade name, trademark, manufacturer, or otherwise does not necessarily constitute or imply endorsement, recommendation or favoring by the United States Government or any agency thereof. The Ewing Marion Kauffman Foundation, the Russell Sage Foundation, the Kellogg Foundation, and the Sloan Foundation provided additional support for this project. We thank Joe Daly, Jeff Jones, Stephanie Marken, and Jonathan Rothwell at Gallup for assistance with implementing the survey module on which many of the results we report are based and with understanding details of the underlying Education Consumer Pulse Survey. We also thank Lillian Petrovic for outstanding research assistance.

## Appendix A: Wording of Selected Questions on Gallup Education Consumer Pulse Survey and Contract Work Module

Question ID	Waves	Wording
WP10200	All	Thinking about your WORK SITUATION over the past seven days, have you been employed by an employer — even minimally, like for an hour or more — from whom you receive money or goods? (This could be for one or more employers.)
U2	All	How many employers did you work for in the last seven days?
U3A_1	All	<i>(Asked of random half of sample who worked for one employer)</i> Were you an employee on this job or were you an independent contractor, independent consultant or freelance worker?
U3A_2	All	<i>(Asked of random half of sample who worked for one employer)</i> Did this employer take any taxes out of your pay?
U3B_1	All	<i>(Asked of random half of sample who worked for two+ employers)</i> Were you an employee on each of your jobs; an independent contractor, independent consultant, or freelance worker on each of your jobs; or did the arrangement vary across jobs?
U3B_2	All	<i>(Asked of random half of sample who worked for two+ employers)</i> Did all of your employers take out taxes from your pay, did none of them take out taxes from your pay, or did it vary across employers?
QA_1	All	<i>(Asked of 50- to 80-year-olds who were asked U3A_1 or U3B_1 and were independent contractors, independent consultants or freelance workers)</i> Still thinking about your work situation over the past seven days, were you working as an independent contractor, independent consultant or freelance worker for a business or organization where you previously were an employee?
QA_2	1,2,4	<i>(Asked of 50- to 80-year-olds who were asked U3A_2 or U3B_2 and whose employer(s) did not take taxes out of their pay)</i> Still thinking about your work situation over the past seven days, were you working on a cash or contract basis for an employer who previously took taxes out of your pay?
QA_2A	3	<i>(Asked of 50- to 80-year-olds who were asked U3A_2 or U3B_2 and whose employer(s) did not take taxes out of their pay)</i> Thinking about the [employer/employers] who currently [does/do] not take taxes out of your pay, did they used to take taxes out of your pay?
QB	All	<i>(Asked of 50- to 80-year-olds who said they were independent contractors, independent consultants or freelance workers or that their employer did not take taxes out of their pay)</i> What was your MAIN REASON for doing this work? Was it to earn income, to stay active and connect with others, to pursue an interest or hobby, because it was the only type of work you could get or was there some other reason?
QC	All	<i>(Asked of 50- to 80-year-olds who said they were independent contractors, independent consultants or freelance workers or that their employer did not take taxes out of their pay, whose main reason for doing the work was to earn income)</i> Would you describe this work as your main source of income, a supplement to the income you earn in your main job, a supplement to your retirement income, or something else?
WP102152	All	<i>(Asked of those who work for an employer)</i> In a typical week (seven days), how many hours do you work for an employer?
U5_1	All	<i>(Asked of those who worked for two+ employers who were asked U3B_1 and whose employment situation varied across jobs)</i> Did you work as an independent contractor, independent consultant or freelance worker for more than half of these hours?

Question ID	Waves	Wording
U5_2	All	<i>(Asked of those who worked for two+ employers who were asked U3B_2 and whose employment situation varied across jobs)</i> Did the job where taxes were taken out of your pay account for more than half of these hours?
WP10202	All	Again, thinking about the last seven days, were you self-employed, even minimally, like for an hour or more? This means working for yourself, freelancing or doing contract work, OR working for your own or your family's business? Self-employment also includes fishing, doing farm work or raising livestock for either your own or your family's farm or ranch.
WP102162	All	<i>(Asked of those who are self-employed)</i> In a typical week (seven days), how many hours do you work as a self-employed individual?
U12	All	<i>(Asked of those who are self-employed who previously indicated they were independent contractors, independent consultants, freelances workers or whose employer did not take taxes out of their pay)</i> Just to check, was all or was some of the self-employment work you did in the last seven days work you already told me about, or not?
U13	All	<i>(Asked of those who did additional self-employment work not previously indicated)</i> Excluding the work you already told me about, in a typical week (seven days), how many additional hours do you work as a self-employed individual?
U14	All	<i>(Asked of those who did additional self-employment work not previously indicated)</i> Was any of this self-employment work done as an independent contractor, independent consultant or freelance worker?
QD	All	<i>(Asked of those 50-80 years old who did self-employment work not previously indicated)</i> Still thinking about the self-employment work you did over the past seven days, were you working as an independent contractor, independent consultant, or freelance worker for a business or organization where you previously were an employee?
QE	All	<i>(Asked of those 50-80 years old who did self-employment work not previously indicated)</i> What was your MAIN REASON for doing this work as an independent contractor, independent consultant or freelance worker? Was it to earn income, to stay active and connect with others, to pursue an interest or hobby, because it was the only type of work you could get, or was there some other reason?
QF	All	<i>(Asked of those 50-80 years old who did self-employment work not previously indicated whose main reason for doing the work was to earn income)</i> Would you describe what you earn from this work as your main source of income, a supplement to the income you earn in your main job, a supplement to your retirement income, or something else?
U17_1	All	<i>(Asked of a random half of the sample)</i> Did you do anything else in the last seven days that you have not already mentioned for which you received (or expect to receive) payment?
U17_2	All	<i>(Asked of a random half of the sample)</i> Did you do anything else in the last seven days that you have not already mentioned for which you received (or expect to receive) payment? Examples might include babysitting or eldercare, cleaning, maintenance work, data entry tasks, driving for a car service or making and selling handicrafts.

Question ID	Waves	Wording
U18	All	<i>(Asked of those who did any other activities for which they expect to receive payment)</i> How many hours did you spend on these activities in the last seven days?
U19_1	All	<i>(Asked of a random half of the sample who were self-employed, worked as an independent consultant, independent contractor or freelancer, worked for an employer who did not take taxes out of their pay, or did work outside of an employer-paid job for which they expected to be paid)</i> For any of the work you did in the past seven days, did you connect directly with new customers or clients through a mobile app or online platform?
U19_2	All	<i>(Asked of a random half of the sample who were self-employed, worked as an independent consultant, independent contractor or freelancer, worked for an employer who did not take taxes out of their pay, or did work outside of an employer-paid job for which they expected to be paid)</i> For any of the work you did in the past seven days, did you connect directly with new customers or clients through a mobile app or online platform? For example, you might have given rides to people using a ridesharing app; used an app to find people looking for cleaning, delivery or handyman services; or used an online platform where people can bid on data entry or other tasks.
U20	3,4	<i>(Asked of those who connected with new customers through a mobile app or online platform)</i> Did the customers pay you directly, or did they pay the mobile app or online platform which then pays you?

## Appendix B: Employment and Self-employment Rates, Gallup versus Current Population Survey

**Table B1: All Work Activity**

Age group	Employment rate		Self-employment rate (in population)			
	Gallup	CPS	Gallup	Gallup w/o miscoded employees	Gallup w/o miscoded emp. or informal work	CPS
18–29	77.9	68.2	14.6	8.2	7.1	2.3
30–49	81.5	80.5	16.0	11.3	10.8	7.7
50–54	74.8	77.4	16.8	12.8	12.4	9.4
55–59	69.1	70.7	17.4	13.4	12.7	9.2
60–64	55.8	56.4	16.5	13.2	12.7	8.3
65–69	37.1	33.0	16.9	13.5	12.8	6.8
70–74	26.0	19.4	15.5	13.1	12.2	5.1
75–79	18.6	11.9	12.6	10.4	9.4	3.5
<b>Total</b>	<b>67.0</b>	<b>65.0</b>	<b>15.8</b>	<b>11.4</b>	<b>10.7</b>	<b>6.5</b>
N	59,593	715,693	59,593	59,593	59,593	715,693

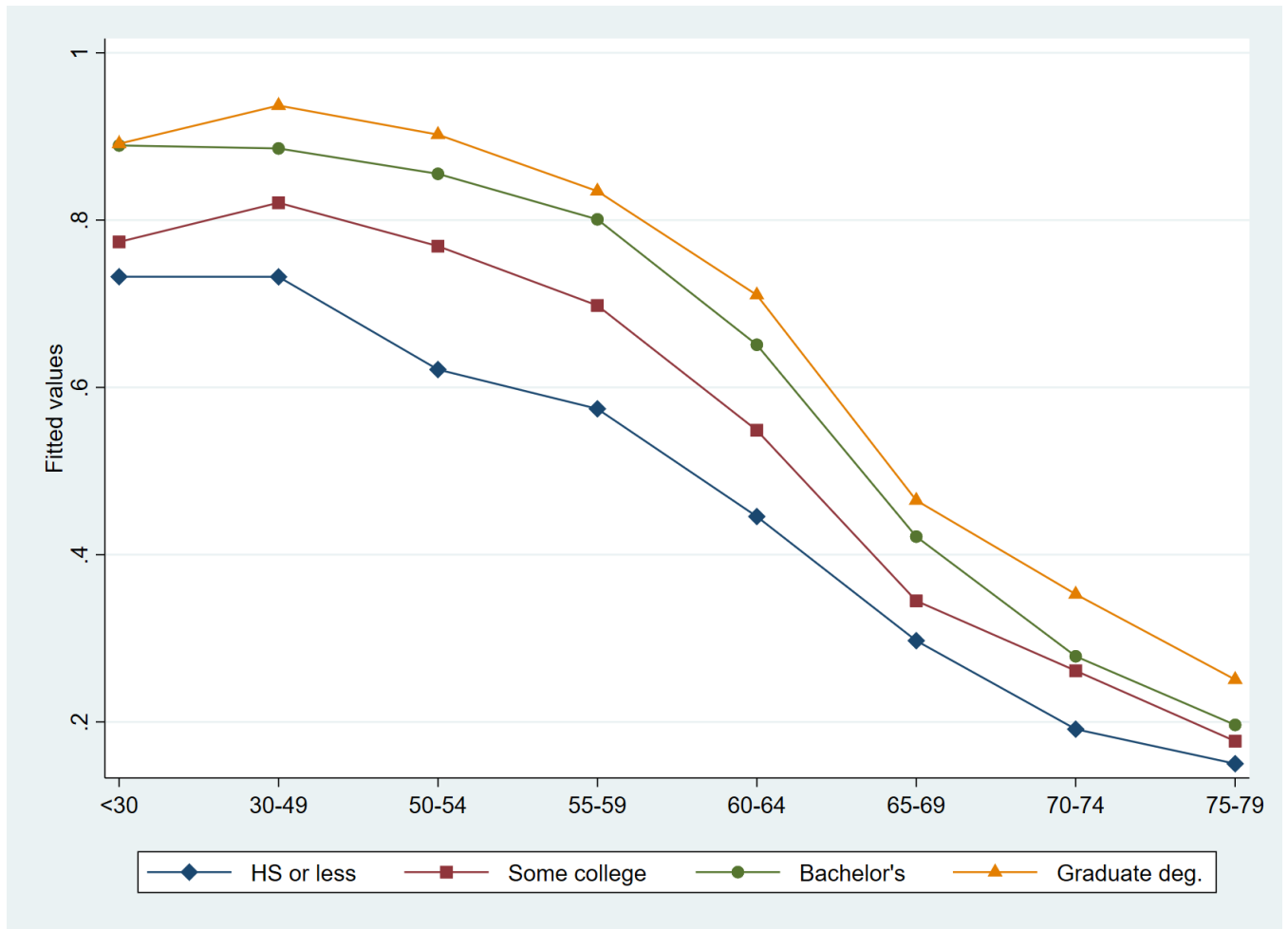
**Table B2: Work Activity Based on Working 15-plus Hours per Week**

Age group	Employment rate		Self-employment rate (in population)			
	Gallup	CPS	Gallup	Gallup w/o miscoded employees	Gallup w/o miscoded emp. or informal work	CPS
18–29	69.9	64.0	10.3	4.9	4.5	2.1
30–49	78.0	78.7	13.3	9.2	8.9	7.2
50–54	70.8	75.7	14.1	10.7	10.5	8.9
55–59	64.2	68.5	13.8	10.5	10.2	8.5
60–64	49.7	53.6	12.1	9.7	9.6	7.4
65–69	29.1	29.1	10.7	8.7	8.4	5.4
70–74	17.5	16.0	8.8	7.4	7.2	3.8
75–79	11.4	9.1	6.8	5.6	5.3	2.5
<b>Total</b>	<b>61.2</b>	<b>62.3</b>	<b>11.9</b>	<b>8.3</b>	<b>8.0</b>	<b>5.8</b>
N	59,593	715,693	59,593	59,593	59,593	715,693

SOURCE: Authors' tabulations, Gallup Contract Work Module and Current Population Survey, May-June 2018, August-September 2018, November-December 2018 and February-March 2019.

NOTE: Gallup employment includes all individuals reporting work for an employer, self-employment or any other work for pay. Self-employment rate as share of population. Main job defined based on hours worked.

## Appendix C: Share of Population Employed, by Education and Age



SOURCE: Authors' calculations, Gallup Contract Work Module.

NOTE: Figure shows fitted values from regressions of the dependent variable—an indicator variable of any form of employment—on age-education interactions and controls for race, gender, wave, and poverty quintile. The values capture the share of the population with any form of employment, by age group and education. See text for details.

## Appendix D: Tabulations and Figures by Gender

**Table D1: Share of Population Working and Employment Arrangement on Main Job, by Age, Men**

Age Group	Share of population with any work	Employment arrangement on main job among those with any work					
		Employee	Self-employed	Specific self-employment arrangement			
				SE, not IC	SE, IC	IC, miscoded as employee	Other work only
18–29	82.0 (0.7)	79.6 (0.8)	20.4 (0.8)	4.4 (0.4)	5.7 (0.5)	9.3 (0.6)	1.0 (0.2)
30–49	88.3 (0.5)	80.2 (0.6)	19.8 (0.6)	5.8 (0.3)	7.4 (0.4)	6.1 (0.4)	0.5 (0.1)
50–54	79.8 (1.0)	76.3 (1.1)	23.7 (1.1)	7.6 (0.7)	9.9 (0.8)	5.7 (0.6)	0.5 (0.2)
55–59	74.9 (1.0)	74.1 (1.1)	25.9 (1.1)	9.8 (0.8)	8.7 (0.7)	6.8 (0.6)	0.6 (0.2)
60–64	62.2 (1.0)	66.9 (1.2)	33.1 (1.2)	11.9 (0.8)	14.2 (0.9)	6.2 (0.6)	0.8 (0.2)
65–69	43.8 (1.0)	51.1 (1.4)	48.9 (1.4)	20.0 (1.1)	17.8 (1.1)	9.1 (0.9)	1.9 (0.4)
70–74	32.6 (0.9)	35.4 (1.6)	64.6 (1.6)	28.3 (1.5)	23.6 (1.4)	9.7 (1.0)	3.0 (0.5)
75–79	24.7 (1.1)	28.0 (2.3)	72.0 (2.3)	29.7 (2.3)	25.3 (2.2)	11.3 (1.4)	5.6 (1.4)
<b>Total</b>	<b>73.6 (0.3)</b>	<b>75.0 (0.4)</b>	<b>25.0 (0.4)</b>	<b>7.9 (0.2)</b>	<b>9.0 (0.2)</b>	<b>7.2 (0.2)</b>	<b>0.8 (0.1)</b>
N	30,327	20,376	20,376	20,376	20,376	20,376	20,376

SOURCE: Authors' tabulations, Gallup Contract Work Module.

NOTE: Shares expressed as percentages. Standard errors in parentheses. SE is self-employed; IC is independent contractor. Tabulations are weighted.

**Table D2: Share of Population Working and Employment Arrangement on Main Job, by Age, Women**

Age Group	Share of population with any work	Employment arrangement on main job among those with any work					
		Employee	Self-employed	Specific self-employment arrangement			
				SE, not IC	SE, IC	IC, miscoded as employee	Other work only
18–29	73.4 (0.9)	83.1 (0.9)	16.9 (0.9)	4.6 (0.5)	3.4 (0.4)	7.1 (0.6)	1.8 (0.3)
30–49	74.7 (0.7)	80.5 (0.7)	19.5 (0.7)	6.5 (0.4)	6.7 (0.4)	5.3 (0.4)	1.0 (0.2)
50–54	70.1 (1.2)	79.0 (1.1)	21.0 (1.1)	7.9 (0.7)	7.8 (0.7)	5.0 (0.6)	0.4 (0.1)
55–59	63.6 (1.1)	75.6 (1.2)	24.4 (1.2)	9.3 (0.8)	9.0 (0.8)	4.7 (0.6)	1.4 (0.4)
60–64	50.1 (1.0)	74.3 (1.2)	25.7 (1.2)	9.2 (0.7)	9.8 (0.9)	5.7 (0.6)	1.0 (0.2)
65–69	31.1 (0.9)	58.7 (1.6)	41.3 (1.6)	15.9 (1.1)	14.5 (1.2)	8.9 (0.9)	1.9 (0.5)
70–74	20.2 (0.7)	47.2 (1.9)	52.8 (1.9)	22.2 (1.6)	17.9 (1.5)	8.2 (1.1)	4.6 (0.8)
75–79	14.0 (0.7)	38.6 (2.9)	61.4 (2.9)	28.3 (2.5)	15.5 (1.8)	11.6 (1.8)	6.0 (1.1)
<b>Total</b>	<b>60.7 (0.4)</b>	<b>78.0 (0.4)</b>	<b>22.0 (0.4)</b>	<b>7.6 (0.2)</b>	<b>7.1 (0.2)</b>	<b>5.9 (0.2)</b>	<b>1.3 (0.1)</b>
N	29,266	15,101	15,101	15,101	15,101	15,101	15,101

SOURCE: Authors' tabulations, Gallup Contract Work Module.

NOTE: Shares expressed as percentages. Standard errors in parentheses. SE is self-employed; IC is independent contractor. Tabulations are weighted.



**Table D3: Selected Employment Characteristics by Age, Men**

Age Group	Part-time (<30 hours/week on all jobs), as share of workers by arrangement on main job			Multiple jobholders, as share of all workers		Participates in online platform work, as share of all workers
	All	Among employees	Among self-employed	All	Combines employee and SE work	
18–29	19.9 (0.8)	14.1 (0.7)	42.6 (2.2)	25.8 (0.8)	17.2 (0.7)	4.0 (0.5)
30–49	6.8 (0.4)	3.4 (0.3)	20.7 (1.3)	21.3 (0.6)	16.4 (0.5)	3.4 (0.3)
50–54	7.7 (0.7)	3.3 (0.6)	21.8 (2.2)	21.1 (1.0)	16.7 (0.9)	2.3 (0.5)
55–59	9.6 (0.8)	4.1 (0.6)	25.4 (2.2)	21.7 (1.0)	17.0 (0.9)	2.9 (0.6)
60–64	18.4 (1.0)	8.8 (0.8)	37.8 (2.1)	18.5 (0.9)	15.0 (0.9)	1.6 (0.4)
65–69	36.9 (1.4)	22.6 (1.7)	51.9 (2.1)	17.4 (1.1)	13.9 (0.9)	3.0 (0.7)
70–74	52.5 (1.6)	37.7 (2.7)	60.6 (2.0)	16.9 (1.2)	13.1 (1.1)	2.0 (0.6)
75–79	60.4 (2.5)	49.1 (4.9)	64.8 (2.8)	17.8 (1.8)	11.4 (1.5)	1.7 (0.7)
<b>Total</b>	<b>14.5 (0.3)</b>	<b>7.8 (0.3)</b>	<b>34.4 (0.8)</b>	<b>21.9 (0.4)</b>	<b>16.3 (0.3)</b>	<b>3.2 (0.2)</b>
N	20,376	14,591	5,785	20,376	20,376	10,079

SOURCE: Authors' tabulations, Gallup Contract Work Module.

NOTE: Shares expressed as percentages of group. Standard errors in parentheses. SE is self-employed. Last column based on Gallup module's third and fourth waves only. Tabulations are weighted.

**Table D4: Selected Employment Characteristics by Age, Women**

Age Group	Part-time (<30 hours/week on all jobs), as share of workers by arrangement on main job			Multiple jobholders, as share of all workers		Participates in online platform work, as share of all workers
	All	Among employees	Among self-employed	All	Combines employee and SE work	
18–29	31.2 (1.1)	25.6 (1.1)	59.1 (2.9)	23.2 (1.0)	11.9 (0.7)	3.5 (0.6)
30–49	19.1 (0.7)	11.9 (0.6)	48.7 (1.9)	18.9 (0.6)	12.1 (0.5)	3.4 (0.4)
50–54	17.2 (1.1)	11.0 (1.0)	40.2 (3.0)	17.8 (1.1)	12.9 (0.9)	2.0 (0.5)
55–59	22.6 (1.2)	13.4 (1.1)	51.3 (2.7)	18.4 (1.0)	12.1 (0.8)	2.5 (0.6)
60–64	29.6 (1.3)	19.2 (1.3)	59.5 (2.6)	17.1 (1.0)	10.2 (0.8)	1.6 (0.6)
65–69	50.3 (1.6)	36.7 (2.2)	69.6 (2.3)	15.2 (1.1)	11.2 (1.0)	2.1 (0.6)
70–74	65.8 (1.9)	54.0 (2.9)	76.3 (2.3)	14.1 (1.3)	9.0 (1.0)	2.4 (0.8)
75–79	73.7 (2.7)	64.9 (5.2)	79.3 (2.8)	17.3 (2.1)	10.9 (1.7)	2.4 (1.3)
<b>Total</b>	<b>25.8</b> <b>(0.4)</b>	<b>17.6</b> <b>(0.4)</b>	<b>54.9</b> <b>(1.0)</b>	<b>19.4</b> <b>(0.4)</b>	<b>11.9</b> <b>(0.3)</b>	<b>2.9</b> <b>(0.2)</b>
N	15,101	11,187	3,914	15,101	15,101	7,452

SOURCE: Authors' tabulations, Gallup Contract Work Module.

NOTE: Shares expressed as percentages of group. Standard errors in parentheses. SE is self-employed. Last column based on Gallup module's third and fourth waves only. Tabulations are weighted.

**Table D5: Incidence of and Reasons for Independent Contractor Work, by Age, Men**

	Population	Among those with IC work:								
	Have any independent contractor work	IC work a secondary job	Work for prior employer	Main reason for IC work to earn income	Of those			Main reason for IC work to stay active, connect with others	Main reason for IC work to pursue interest or hobby	Main reason for IC work only type of work could get
					IC work main source of income	IC work supplement to income from main job	IC work supplement to retirement income			
50–54	17.2 (0.9)	27.5 (2.4)	28.1 (2.6)	69.0 (2.6)	47.7 (2.8)	14.3 (1.8)	2.5 (1)	8.4 (1.5)	8.4 (1.6)	3.4 (1.2)
55–59	16.5 (0.8)	29.4 (2.4)	27.1 (2.5)	62.1 (2.6)	43.4 (2.6)	9.9 (1.5)	5.5 (1.2)	10.1 (1.7)	10.5 (1.6)	3.3 (1.0)
60–64	15.4 (0.7)	17.6 (1.7)	22.9 (2.0)	58.9 (2.4)	38.8 (2.4)	7.9 (1.2)	9.4 (1.4)	14.9 (1.7)	10.9 (1.5)	2.9 (0.8)
65–69	13.5 (0.7)	12.6 (1.7)	26.8 (2.4)	46.4 (2.7)	19.6 (2.2)	5.2 (1.2)	18.8 (2.1)	26.0 (2.3)	13.1 (1.7)	2.9 (1.4)
70–74	11.8 (0.6)	7.7 (1.3)	23.1 (2.3)	38.7 (2.7)	11.7 (1.6)	2.4 (0.7)	22.8 (2.4)	32.0 (2.5)	14.2 (2.0)	0.5 (0.3)
75–79	9.5 (0.7)	4.6 (1.5)	22.5 (3.4)	35.6 (3.8)	9.8 (2.3)	1.2 (0.7)	23.3 (3.5)	36.8 (3.7)	13.2 (2.3)	1.6 (0.9)
<b>Total</b>	<b>14.6 (0.3)</b>	<b>20.0 (0.9)</b>	<b>25.7 (1.1)</b>	<b>56.6 (1.2)</b>	<b>34.4 (1.1)</b>	<b>8.5 (0.7)</b>	<b>10.6 (0.7)</b>	<b>17.2 (0.8)</b>	<b>11.0 (0.7)</b>	<b>2.8 (0.5)</b>
N	18,316	2,655	2,655	2,655	2,655	2,655	2,655	2,655	2,655	2,655

SOURCE: Authors' tabulations, Gallup Contract Work Module.

NOTE: Sample persons age 50 to 79. Shares expressed as percentages. Main reasons are mutually exclusive but do not sum to 100 due to a catchall “other” reason and some nonresponse; the specific reasons for earning income specified in columns five through seven similarly do not sum to total who gave earning income as main reason for IC work. Standard errors in parentheses. IC is independent contractor. Tabulations are weighted.

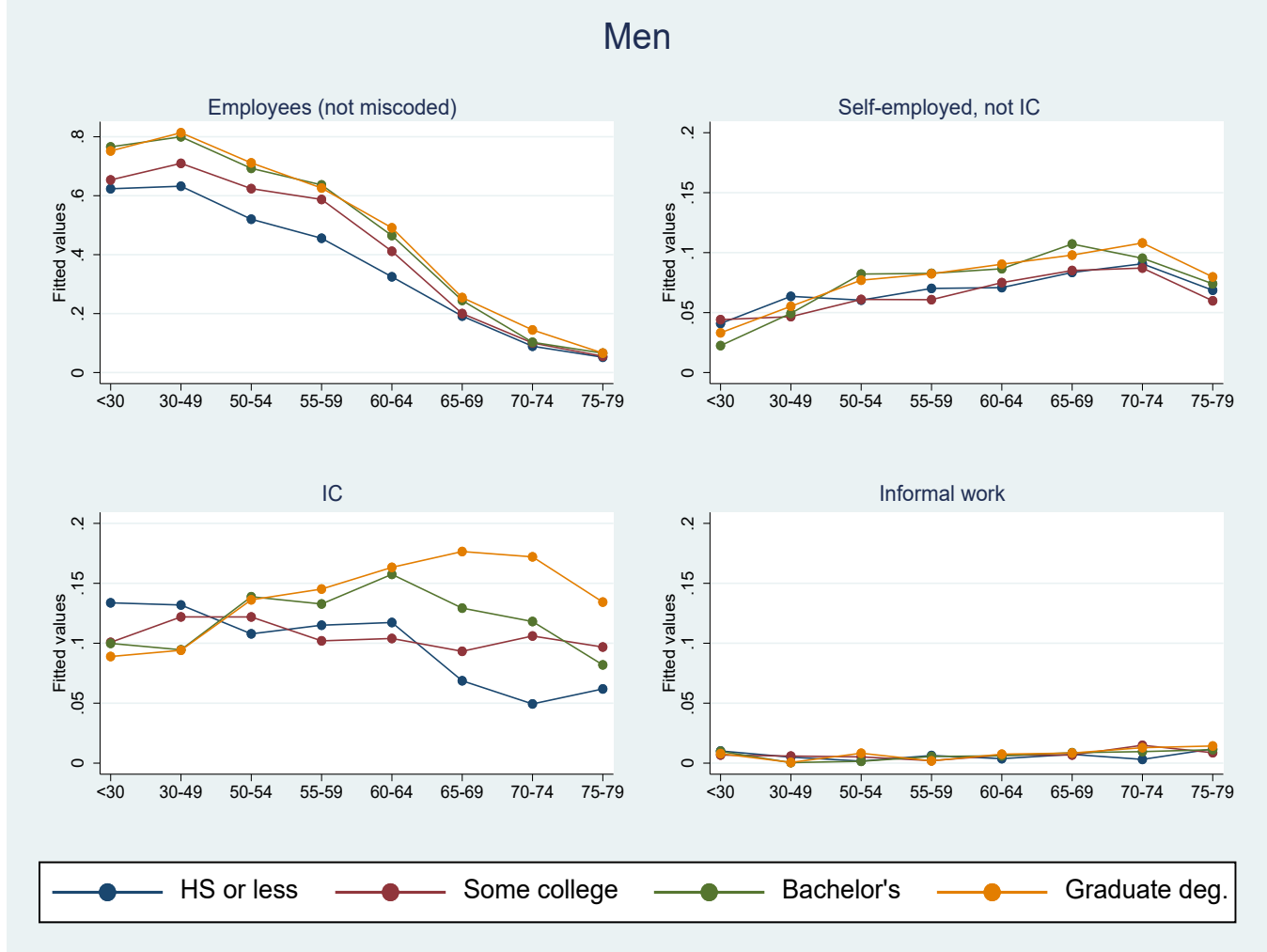
**Table D6: Incidence of and Reasons for Independent Contractor Work, by Age, Women**

	Population		Among those with IC work:							
	Have any independent contractor work	IC work a secondary job	Work for prior employer	Of those			Main reason for IC work to stay active, connect with others	Main reason for IC work to pursue interest or hobby	Main reason for IC work only type of work could get	
				Main reason for IC work to earn income	IC work main source of income	IC work supplement to income from main job				IC work supplement to retirement income
50–54	12.3 (0.8)	27.4 (2.8)	20.6 (2.8)	60.5 (3.2)	33.2 (3.1)	15.1 (2.4)	3.0 (1.2)	10.6 (2.0)	10.6 (1.9)	4.3 (1.7)
55–59	11.5 (0.7)	24.0 (2.6)	20.3 (2.7)	56.4 (3.1)	33.2 (3.0)	9.5 (1.7)	5.4 (1.2)	16.1 (2.5)	12.2 (1.9)	1.8 (0.7)
60–64	9.6 (0.6)	19.4 (2.6)	22.2 (2.8)	49.3 (3.2)	28.6 (3.0)	6.7 (1.4)	12.9 (2.3)	21.7 (2.7)	10.6 (2.0)	0.9 (0.6)
65–69	8.0 (0.5)	8.6 (1.4)	19.2 (2.6)	44.3 (3.2)	16.1 (2.4)	3.6 (1.1)	22.0 (2.6)	24.7 (2.7)	10.5 (1.7)	1.1 (0.5)
70–74	5.8 (0.4)	9.7 (2.1)	25.5 (3.4)	36.3 (3.4)	8.9 (2.0)	1.5 (0.7)	22.5 (2.9)	38.7 (3.6)	10.2 (1.9)	0.4 (0.4)
75–79	4.2 (0.4)	10.8 (3.1)	26.9 (4.2)	30.2 (4.2)	5.6 (2.1)	0.4 (0.4)	21.4 (3.7)	43.2 (4.7)	10.4 (2.5)	0.9 (0.9)
<b>Total</b>	<b>9.1 (0.3)</b>	<b>19.9 (1.2)</b>	<b>21.5 (1.3)</b>	<b>51.2 (1.5)</b>	<b>26.2 (1.3)</b>	<b>8.5 (0.8)</b>	<b>11.0 (0.8)</b>	<b>20.4 (1.2)</b>	<b>10.9 (0.9)</b>	<b>2.0 (0.5)</b>
N	20,286	1,759	1,759	1,759	1,759	1,759	1,759	1,759	1,759	1,759

SOURCE: Authors' tabulations, Gallup Contract Work Module.

NOTE: Sample persons age 50 to 79. Shares expressed as percentages. Main reasons are mutually exclusive but do not sum to 100 due to a catchall “other” reason and some nonresponse; the specific reasons for earning income specified in columns five through seven similarly do not sum to total who gave earning income as main reason for IC work. Standard errors in parentheses. IC is independent contractor. Tabulations are weighted.

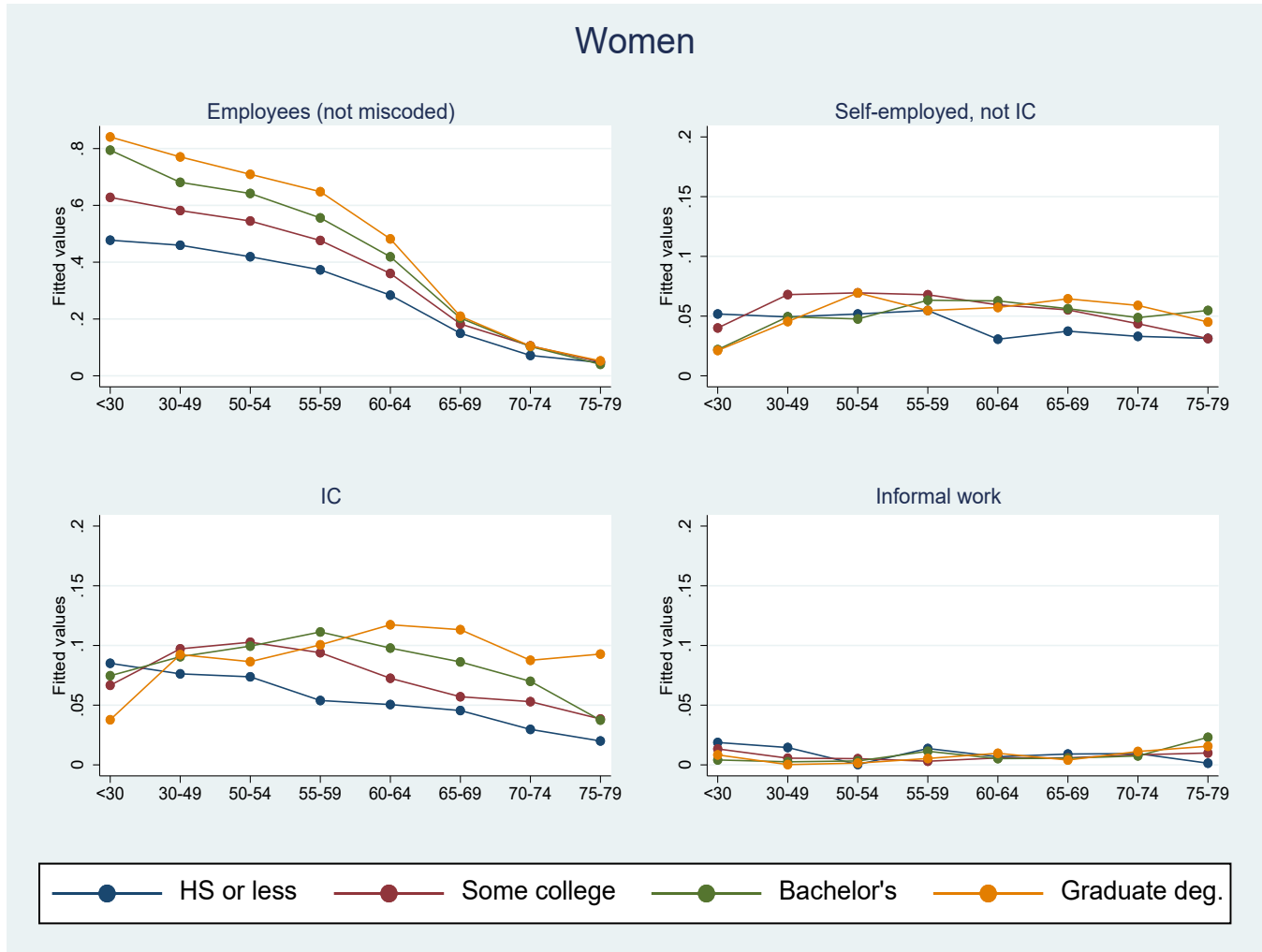
**Figure D1: Share of Population Employed by Employment Status on Main Job, by Age and Education, Men**



SOURCE: Authors' calculations, Gallup Contract Work Module.

NOTE: Figure shows fitted values from regressions of dependent variable—an indicator for employment status on main job as shown in each panel—on age-education interactions and controls for race, gender, ZIP code poverty quintile, and wave. Values capture share of population in each status, by age group and education. IC is independent contractor. Informal work pertains to individuals who reported *only* informal work not captured by standard employment and self-employment questions. See text for details.

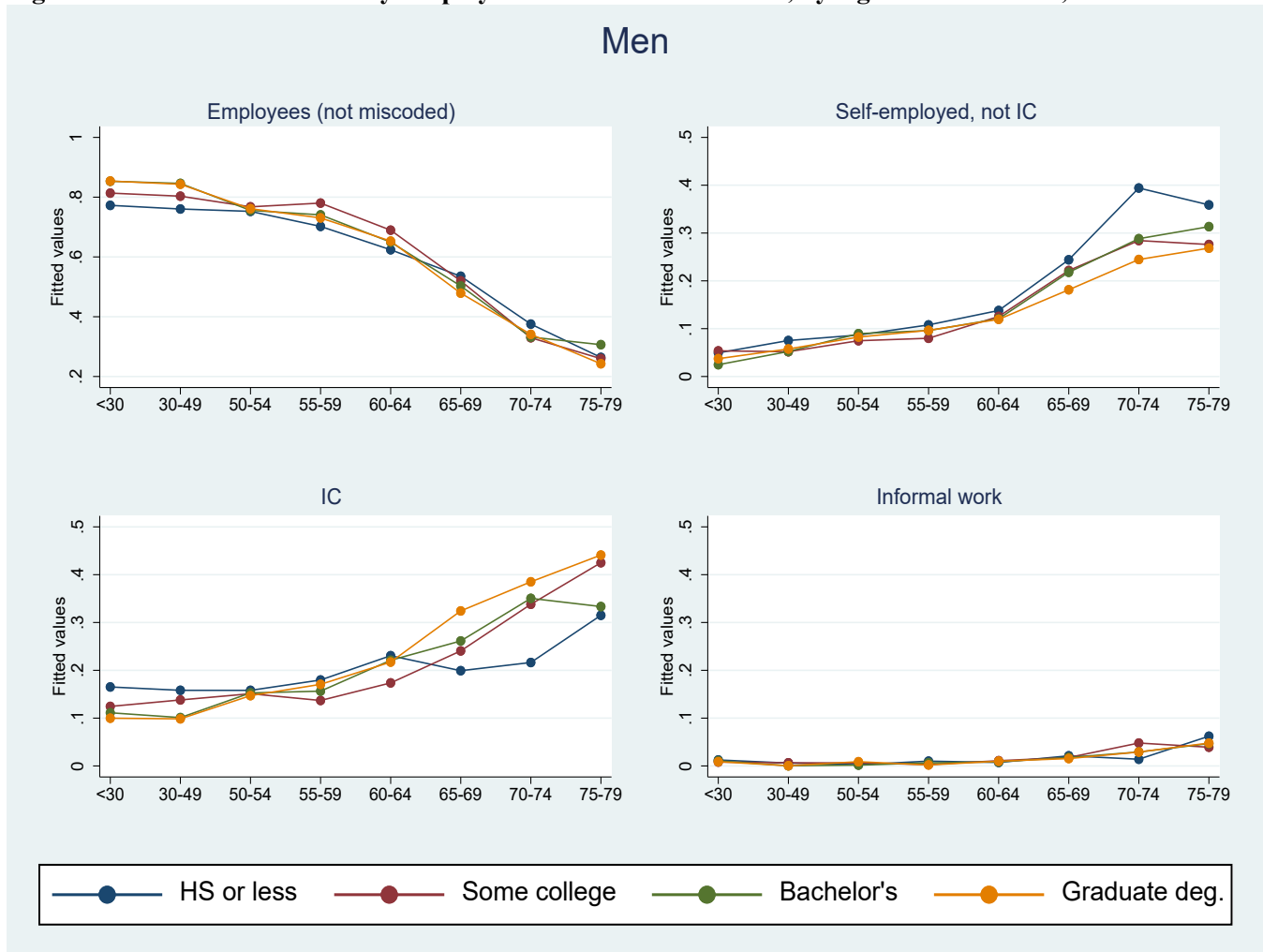
**Figure D2: Share of Population Employed by Employment Status on Main Job, by Age and Education, Women**



SOURCE: Authors' calculations, Gallup Contract Work Module.

NOTE: Figure shows fitted values from regressions of dependent variable—an indicator for employment status on main job as shown in each panel—on age-education interactions and controls for race, gender, ZIP code poverty quintile, and wave. Values capture share of population in each status, by age group and education. IC is independent contractor. Informal work pertains to individuals who reported *only* informal work not captured by standard employment and self-employment questions. See text for details.

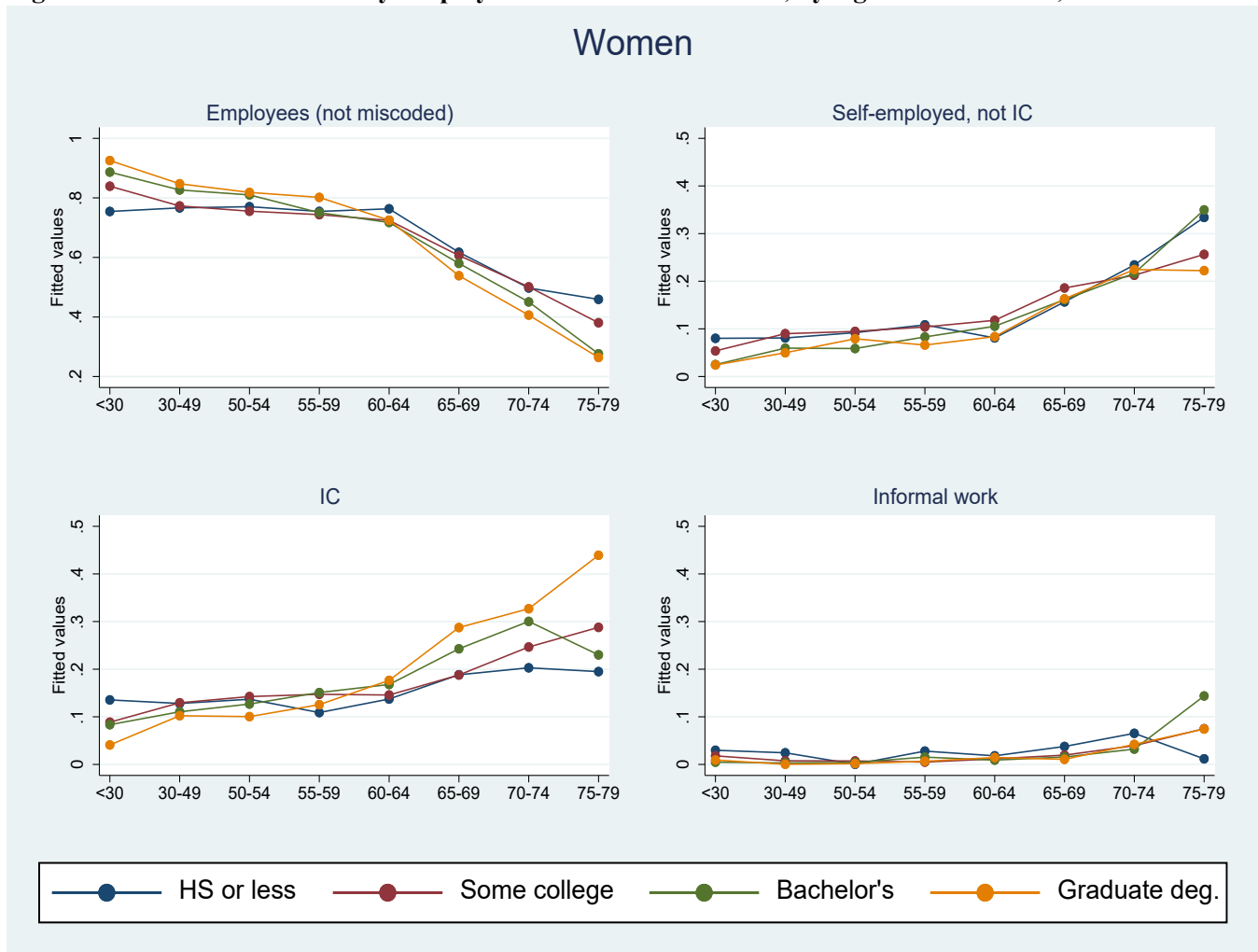
**Figure D3: Share of Workers by Employment Status on Main Job, by Age and Education, Men**



SOURCE: Authors' calculations, Gallup Contract Work Module.

NOTE: Figure shows fitted values from regressions of dependent variable—an indicator for employment status on main job as shown in each panel, *among those with some form of employment*—on age-education interactions and controls for race, gender, ZIP code poverty quintile, and wave. Values capture share of *employment* in each status, by age group and education. IC is independent contractor. Informal work pertains to individuals who reported *only* informal work not captured by standard employment and self-employment questions. See text for details.

**Figure D4: Share of Workers by Employment Status on Main Job, by Age and Education, Women**



SOURCE: Authors' calculations, Gallup Contract Work Module.

NOTE: Figure shows fitted values from regressions of dependent variable—an indicator for employment status on main job as shown in each panel, *among those with some form of employment*—on age-education interactions and controls for race, gender, ZIP code poverty quintile, and wave. Values capture share of *employment* in each status, by age group and education. IC is independent contractor. Informal work pertains to individuals who reported *only* informal work not captured by standard employment and self-employment questions. See text for details.