

A Survey Inquiry into Behavioral Foundations of Hate
Speech Regulations: Evidence from Japan

Online Appendix

Table A1: Results of linear regression models including satisficers

	<i>Dependent Variable</i>			
	Support for Regulations	Societal Concern	Sense of Injustice	Support for Regulations
	(1)	(2)	(3)	(4)
Harm to Feelings	-0.140 (0.131)	0.024 (0.075)	-0.064 (0.090)	-0.140 (0.130)
Harm to Dignity	0.832*** (0.140)	0.623*** (0.075)	0.635*** (0.091)	0.280 (0.174)
Societal Concern				0.654*** (0.139)
Sense of Injustice				0.231 (0.118)
Male	-0.166 (0.161)	0.009 (0.084)	0.139 (0.115)	-0.181 (0.148)
Age	-0.001 (0.006)	0.002 (0.003)	-0.001 (0.005)	-0.002 (0.005)
Ideology	-0.166*** (0.049)	-0.043 (0.022)	-0.085* (0.041)	-0.120** (0.043)
Free Speech	0.162 (0.112)	0.080 (0.055)	0.068 (0.082)	0.089 (0.097)
Victim	0.024 (0.389)	-0.284 (0.212)	-0.578 (0.590)	0.323 (0.355)
Four-Year College or Above	-0.095 (0.166)	0.055 (0.087)	-0.054 (0.121)	-0.111 (0.152)
Median Income or Above	0.206 (0.180)	-0.057 (0.098)	0.294 (0.162)	0.184 (0.172)
Constant	1.022 (0.655)	1.066** (0.379)	1.467** (0.494)	-0.033 (0.599)
Observations	302	299	301	299

Note: Robust standard errors are in parentheses. *p<0.05; **p<0.01; ***p<0.001.

Table A2: Results of linear regression models excluding variables for ideology and free speech

	<i>Dependent Variable</i>			
	Support for Regulations	Societal Concern	Sense of Injustice	Support for Regulations
	(1)	(2)	(3)	(4)
Harm to Feelings	-0.100 (0.175)	0.038 (0.080)	-0.025 (0.092)	-0.118 (0.154)
Harm to Dignity	0.781*** (0.174)	0.646*** (0.079)	0.650*** (0.097)	0.120 (0.197)
Societal Concern				0.746*** (0.165)
Sense of Injustice				0.282* (0.129)
Male	-0.131 (0.181)	0.029 (0.084)	0.059 (0.127)	-0.152 (0.167)
Age	0.003 (0.006)	0.005 (0.003)	0.003 (0.005)	-0.001 (0.006)
Victim	0.227 (0.543)	-0.079 (0.257)	-0.341 (0.634)	0.465 (0.425)
Four-Year College or Above	-0.029 (0.190)	-0.005 (0.086)	-0.076 (0.137)	0.001 (0.175)
Median Income or Above	-0.046 (0.207)	-0.174 (0.095)	0.171 (0.179)	0.046 (0.194)
Constant	0.699 (0.556)	0.965*** (0.289)	0.975* (0.399)	-0.354 (0.586)
Observations	255	252	254	251

Note: Robust standard errors are in parentheses. *p<0.05; **p<0.01; ***p<0.001.

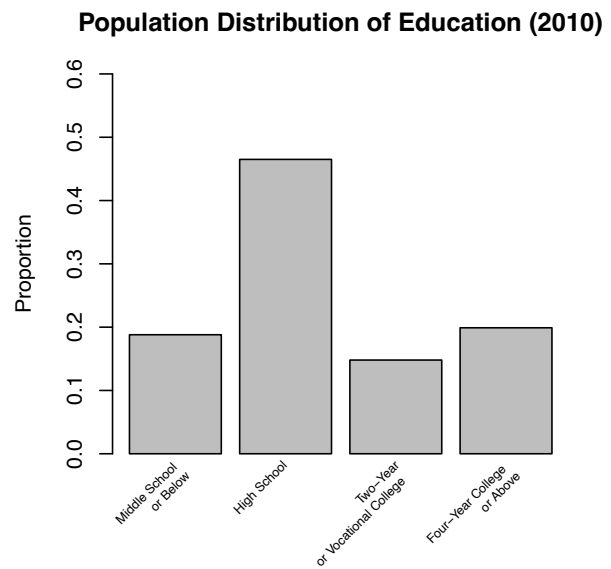
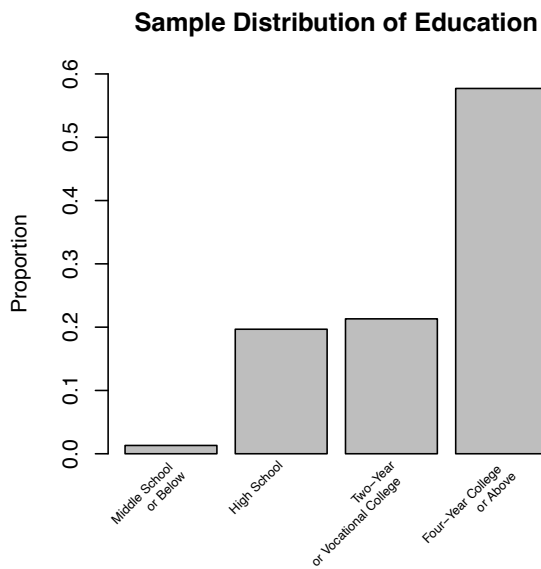
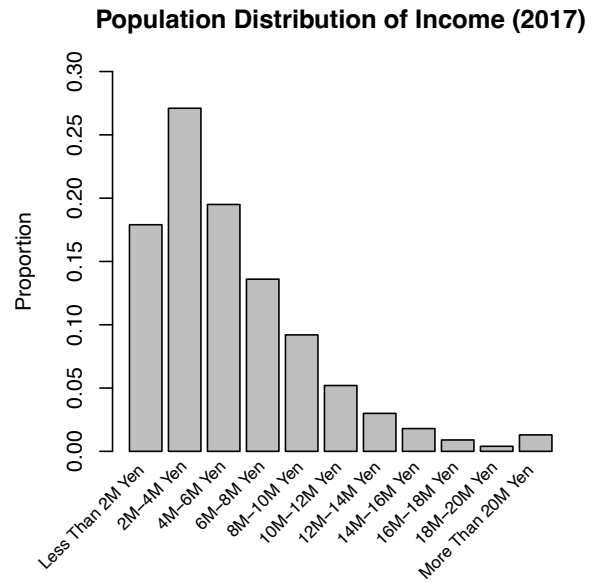
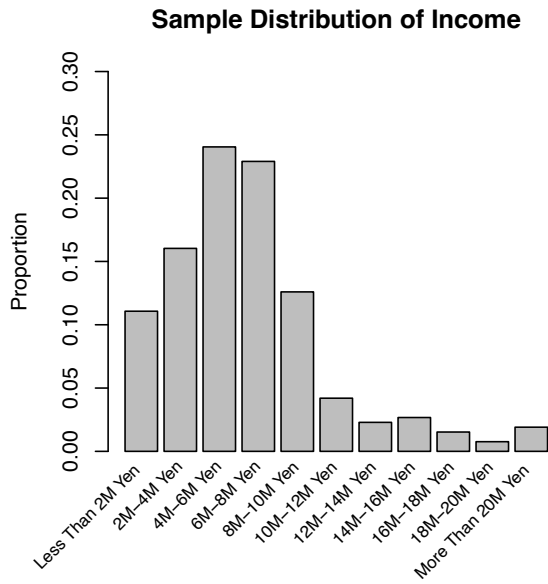
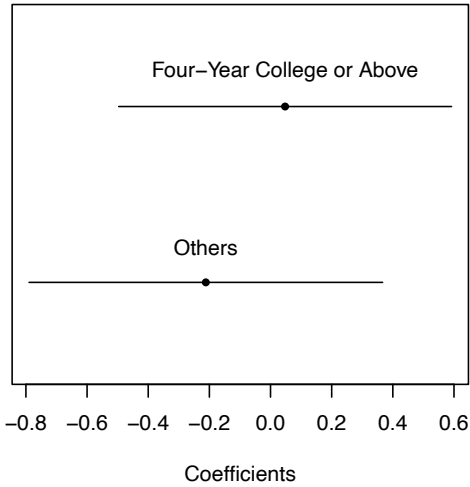
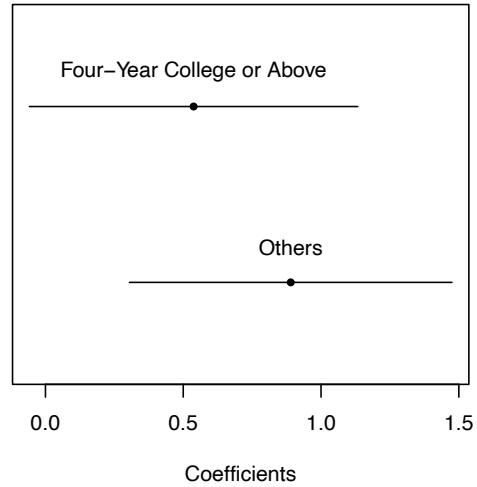


Figure A1: Sample and population distributions of income and education. Data source of the population distributions: Portal Site of Official Statistics of Japan.

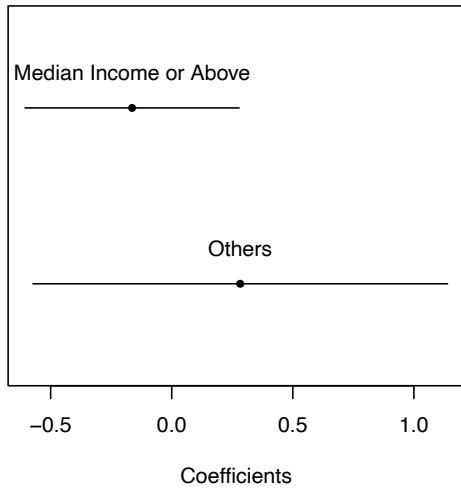
IV: Harm to Feelings
DV: Support for Hate Speech Regulation



IV: Harm to Dignity
DV: Support for Hate Speech Regulation



IV: Harm to Feelings
DV: Support for Hate Speech Regulation



IV: Harm to Dignity
DV: Support for Hate Speech Regulation

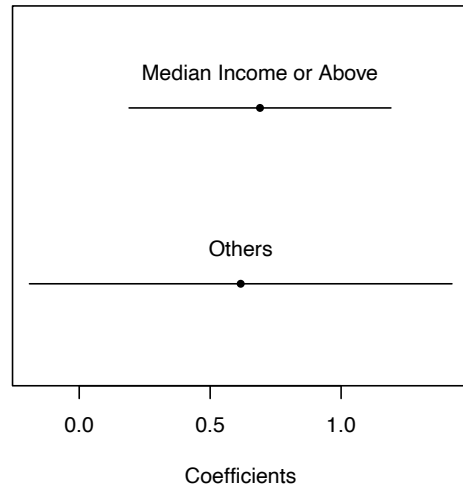


Figure A2: Associations between the harms of hate speech and support for hate speech regulations. Each line represents a 95% confidence interval based on robust standard errors. The top two panels are derived from linear regression models fitted separately to two subsamples grouped by education levels. The bottom two panels are derived from linear regression models fitted separately to two subsamples grouped by income levels. Each model includes as covariates the respondent's perceived harm to feelings, perceived harm to dignity, gender, age, ideology, attitude toward free speech, relationship with victims of hate speech, income level (the top two panels), and education level (the bottom two panels).