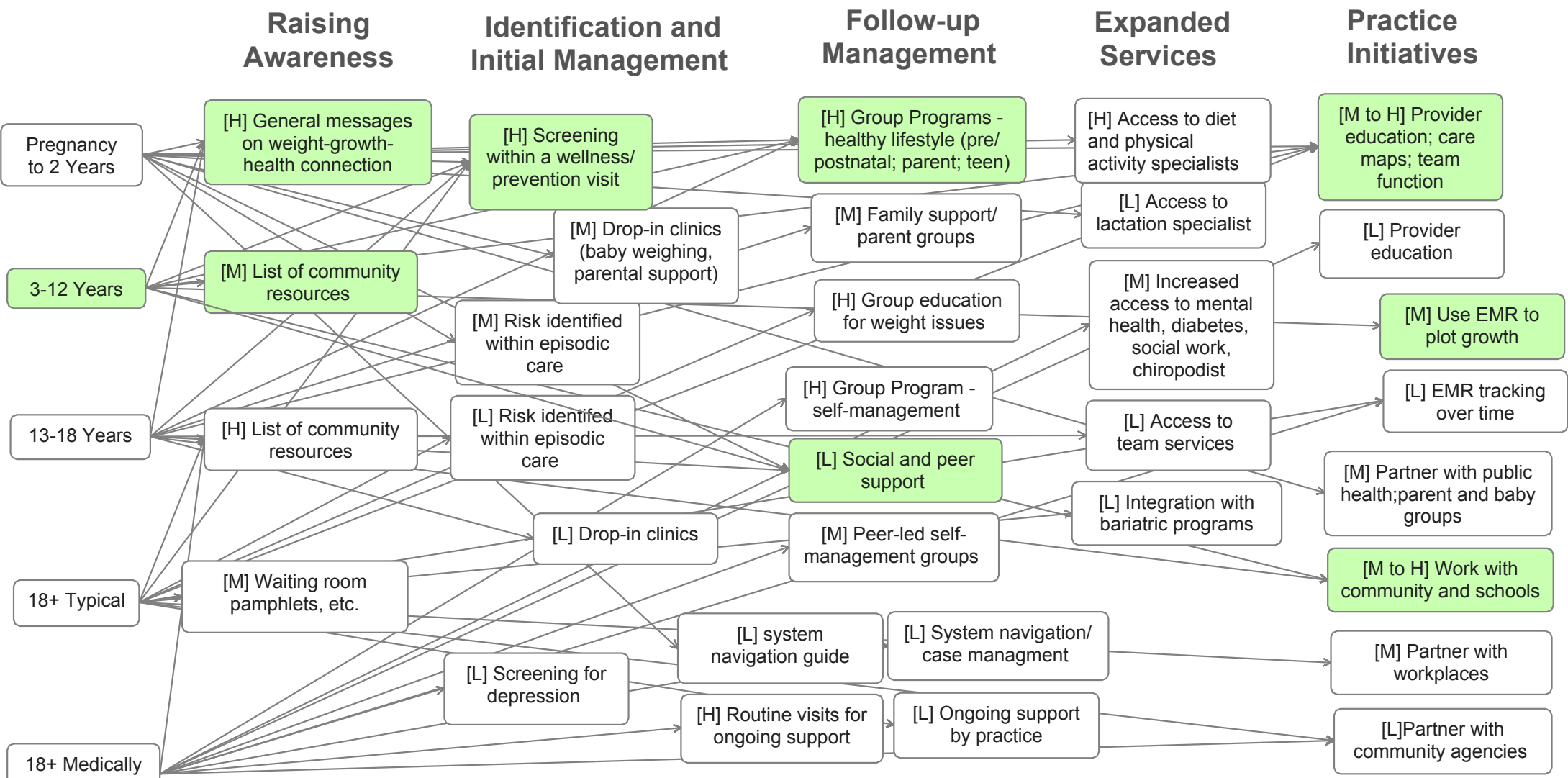
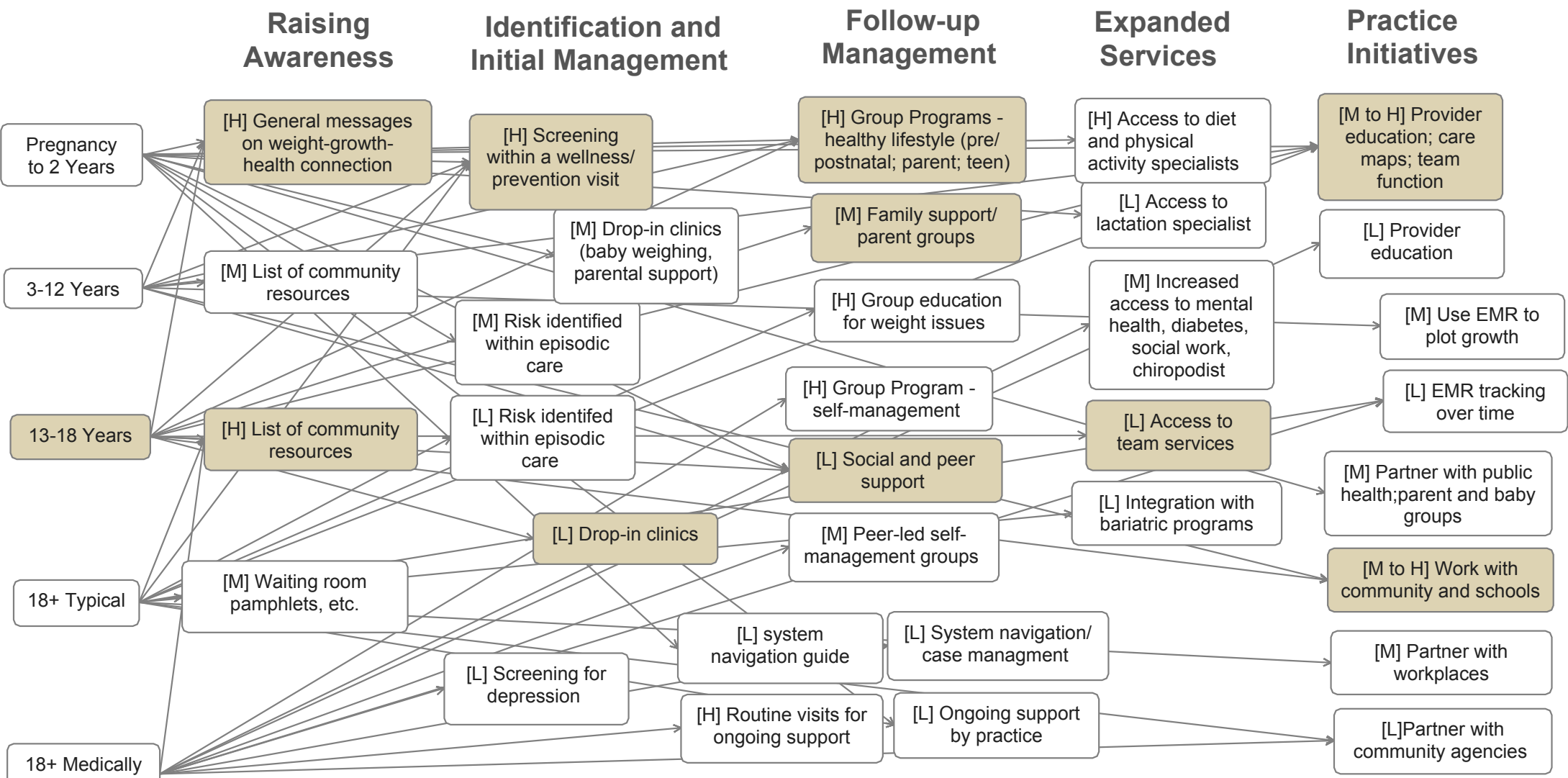


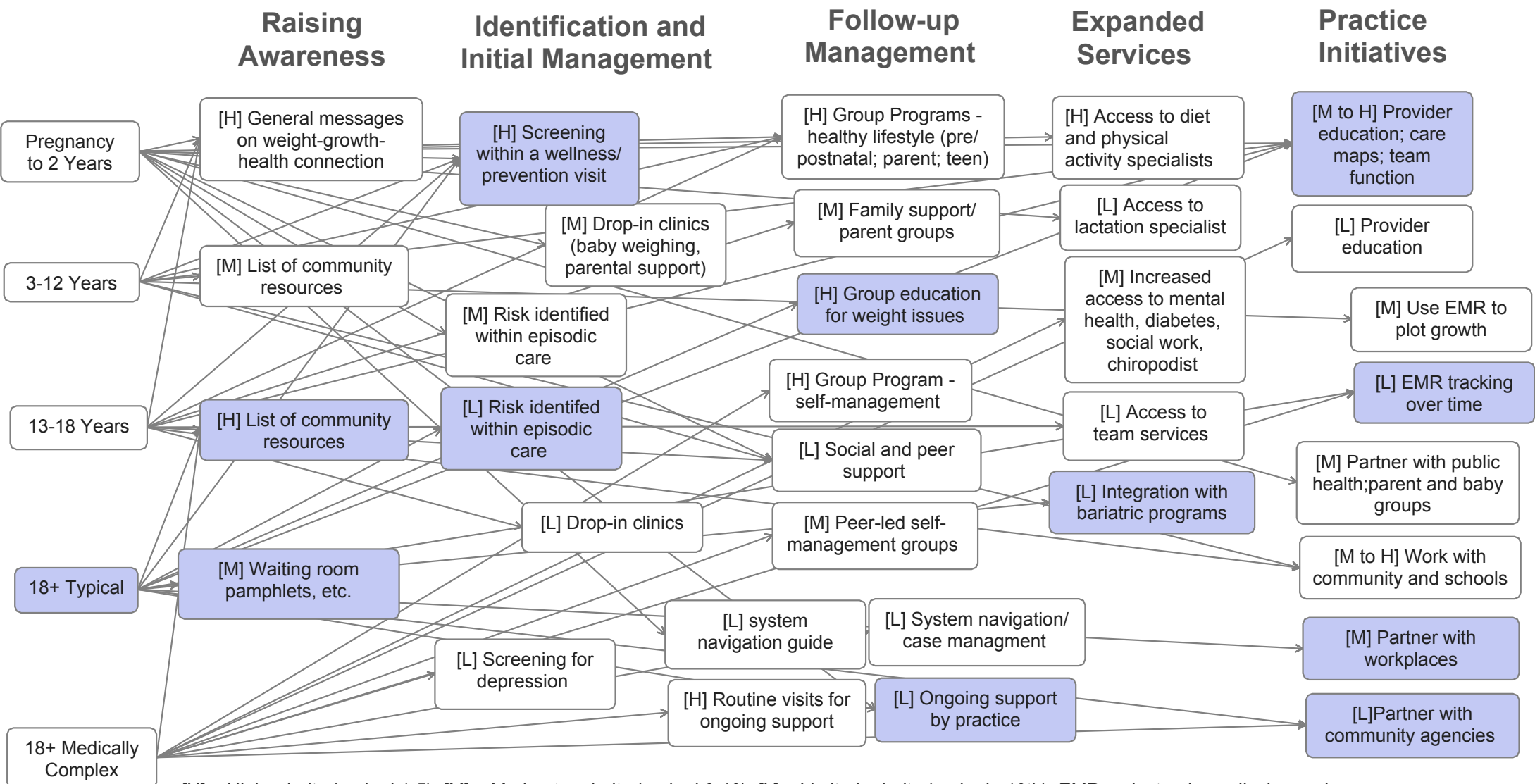
[H] = High priority (ranked 1-5); [M] = Moderate priority (ranked 6-10); [L] = Limited priority (ranked >10th); EMR = electronic medical records



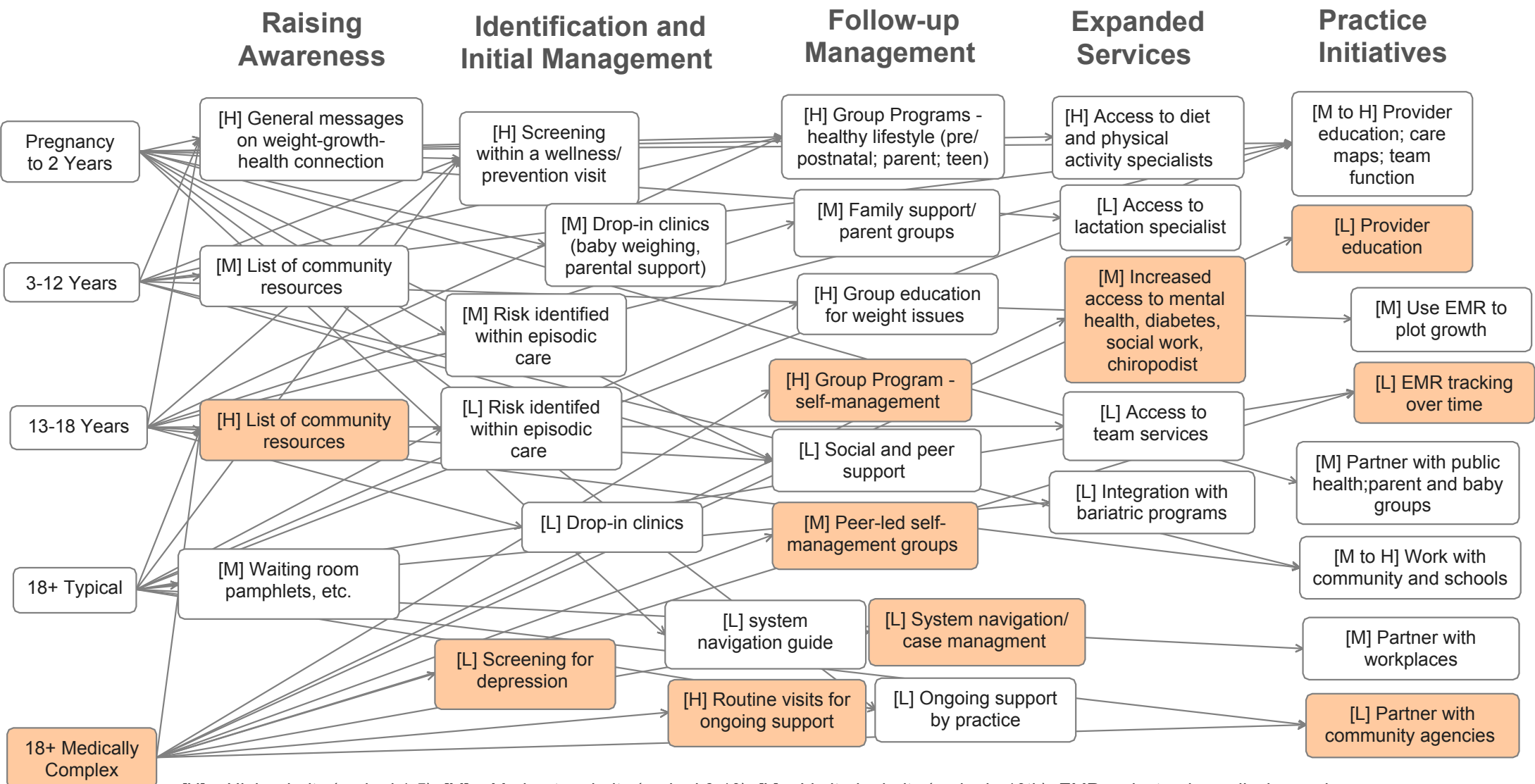
[H] = High priority (ranked 1-5); [M] = Moderate priority (ranked 6-10); [L] = Limited priority (ranked >10th); EMR = electronic medical records



[H] = High priority (ranked 1-5); [M] = Moderate priority (ranked 6-10); [L] = Limited priority (ranked >10th); EMR = electronic medical records



[H] = High priority (ranked 1-5); [M] = Moderate priority (ranked 6-10); [L] = Limited priority (ranked >10th); EMR = electronic medical records



[H] = High priority (ranked 1-5); [M] = Moderate priority (ranked 6-10); [L] = Limited priority (ranked >10th); EMR = electronic medical records