

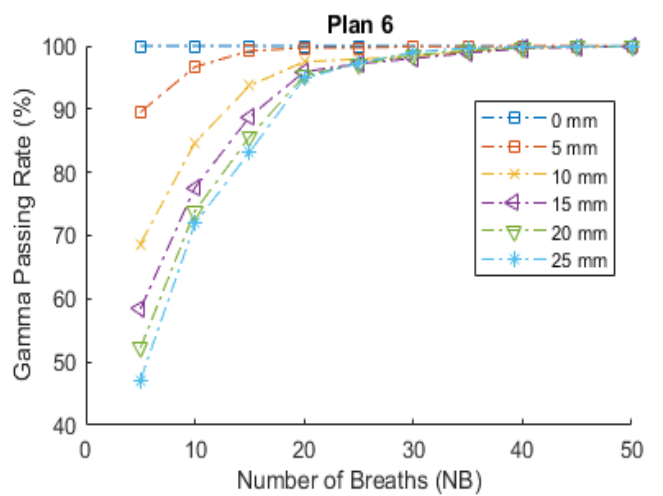
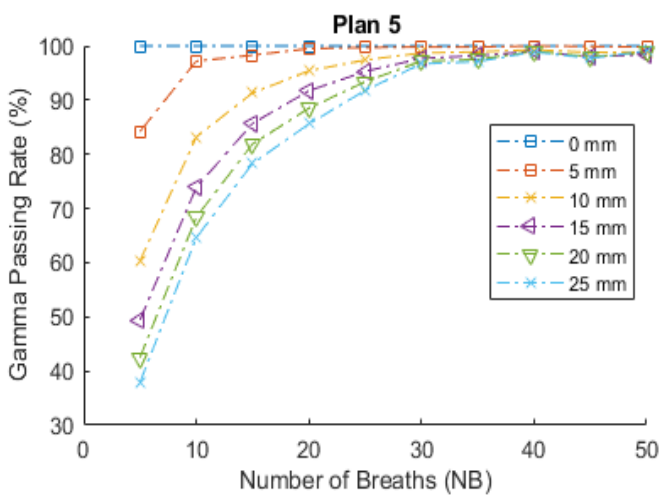
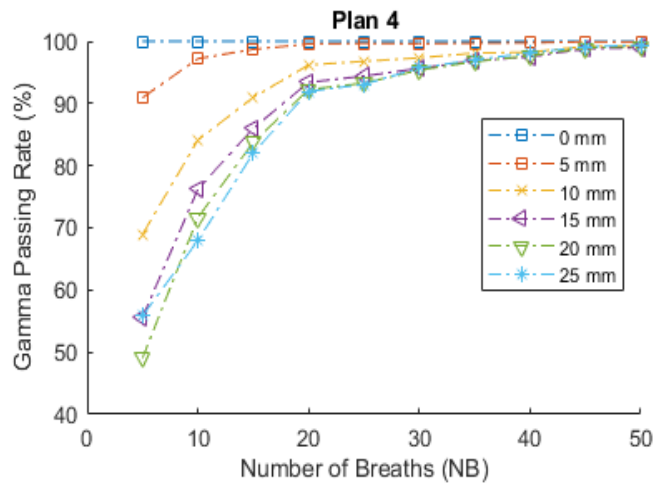
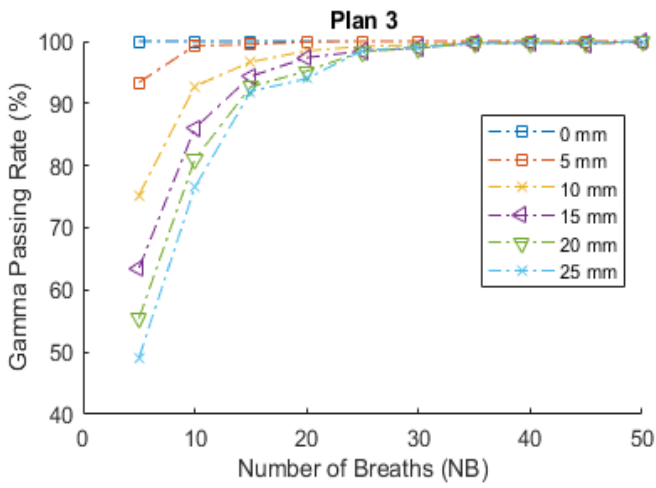
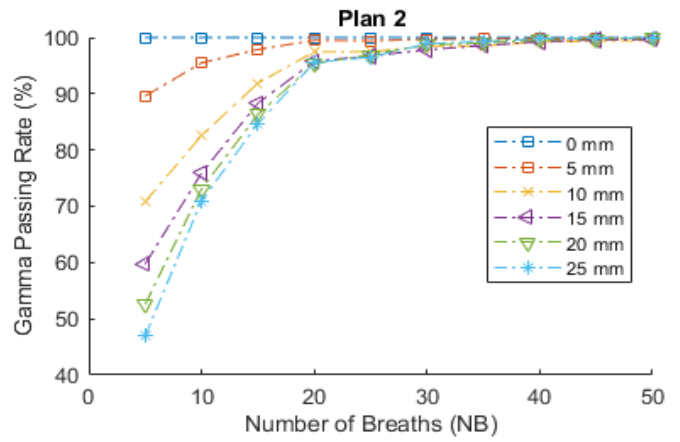
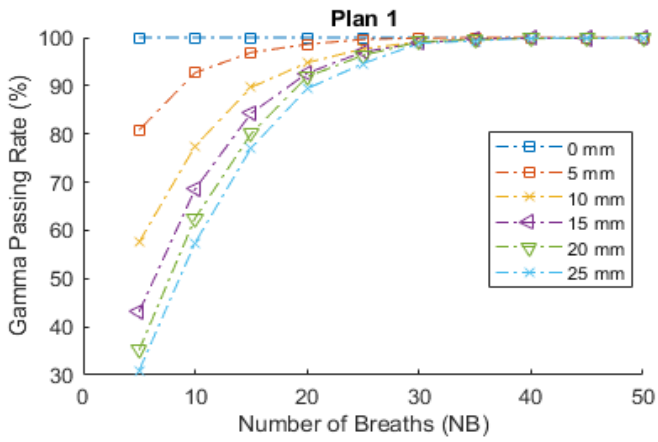
Supplementary

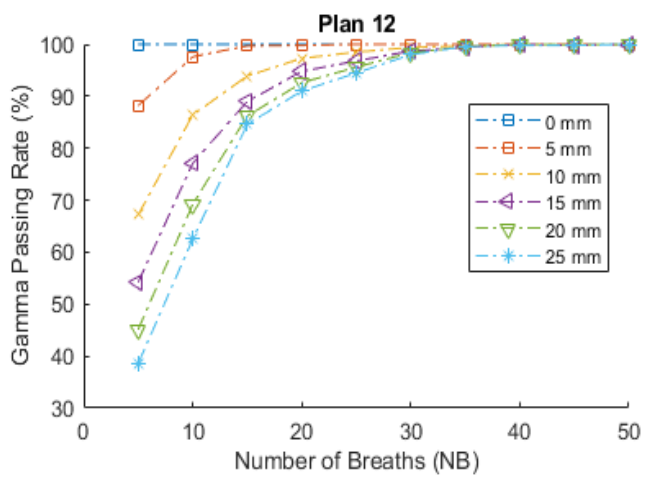
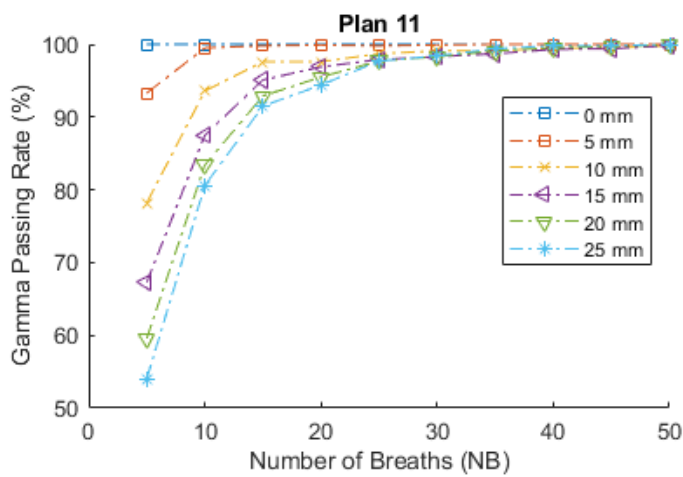
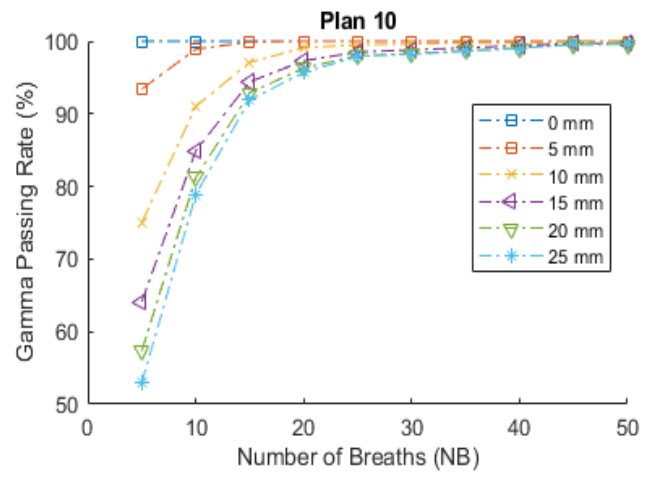
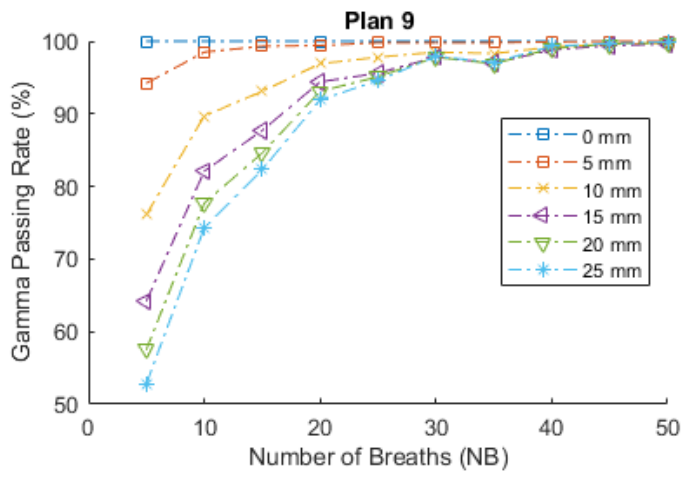
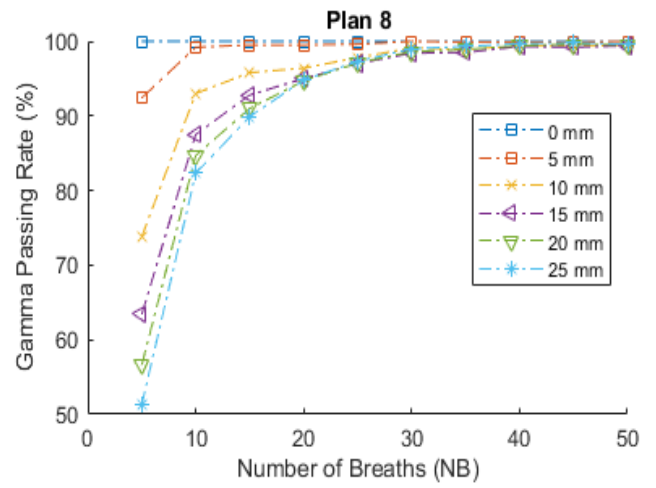
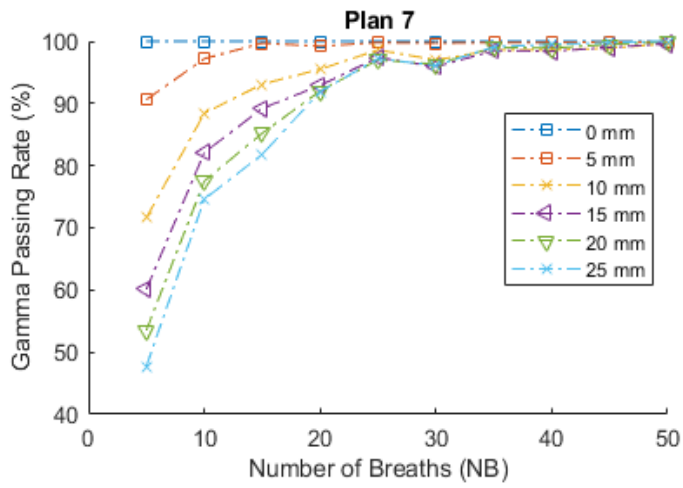
Table 1: List of the lung SABR cases of high 3D motion amplitudes (≥ 1 cm). The eight cases of low NBS are bolded

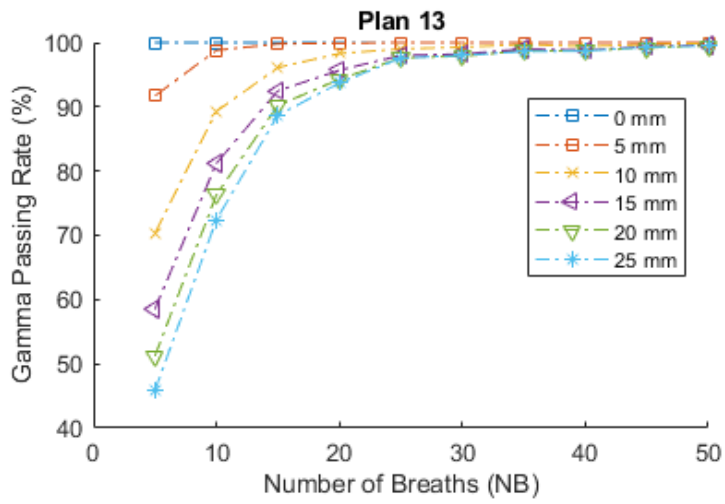
No.	Motion of the Centre of Mass in 3 Directions (cm)	External Marker (RPM) Mean Amplitude (cm)	SD	External Marker (RPM) Mean Breathing Period (sec)	SD	Irradiation time (sec)	NBS
1	2.25	1.39	0.18	6.03	0.79	95.00	15.75
2	2.43	1.90	0.39	5.86	2.29	134.00	22.85
3	2.67	1.19	0.28	4.55	0.96	112.80	24.81
4	2.05	0.94	0.21	3.64	0.61	118.40	32.52
5	2.08	1.28	0.36	5.01	1.38	129.80	25.89
6	2.03	1.39	0.14	5.13	0.49	127.20	24.79
7	2.13	0.70	0.05	6.27	0.66	105.60	16.83
8	1.86	0.81	0.14	4.19	0.55	92.00	21.97
9	1.80	1.38	0.16	5.17	1.10	74.75	13.99
10	1.77	0.80	0.11	3.87	0.34	95.00	24.54
11	1.77	1.34	0.13	3.32	0.22	108.00	32.48
12	1.70	0.84	0.08	3.67	0.99	85.20	23.24
13	1.63	1.15	0.19	4.04	0.42	132.00	32.68
14	1.61	1.01	0.27	3.97	0.49	118.00	29.74
15	1.61	0.68	0.10	3.23	0.41	126.60	39.23
16	1.60	1.68	0.31	6.73	1.54	85.00	12.63
17	1.52	0.94	0.12	3.47	0.34	131.00	37.79
18	1.52	0.97	0.08	3.77	0.26	97.40	25.80
19	1.48	1.03	0.19	5.37	1.05	93.25	17.37
20	1.48	0.86	0.17	3.23	0.60	141.00	43.63
21	1.45	1.31	0.17	3.93	0.50	204.00	51.89
22	1.44	0.79	0.15	3.86	0.95	174.00	45.06
23	1.35	0.76	0.17	2.91	0.32	120.88	41.52
24	1.35	0.65	0.11	3.00	0.44	89.00	29.64
25	1.34	1.62	0.17	5.31	1.05	154.20	29.05
26	1.33	0.42	0.04	2.94	0.12	123.40	41.97
27	1.33	1.01	0.18	5.75	0.93	121.00	21.05
28	1.31	0.60	0.07	3.98	0.51	113.40	28.53
29	1.25	0.77	0.18	4.28	1.28	79.63	18.60
30	1.22	1.28	0.19	4.94	0.68	129.00	26.13
31	1.21	0.92	0.15	3.85	0.59	203.00	52.69
32	1.19	0.64	0.10	3.50	0.95	90.00	25.71
33	1.17	1.61	0.43	4.56	1.52	126.00	27.62
34	1.16	0.57	0.06	3.29	0.25	133.20	34.70

35	1.15	0.80	0.17	3.26	0.58	86.00	26.40
36	1.14	1.09	0.37	5.14	1.11	133.20	25.92
37	1.14	1.11	0.18	3.71	0.21	124.00	33.41
38	1.13	0.69	0.07	2.00	0.25	128.00	64.15
39	1.13	0.78	0.10	2.19	0.64	128.00	58.52
40	1.11	0.75	0.10	5.90	1.03	92.88	15.75
41	1.10	0.95	0.21	4.49	0.50	129.20	28.81
42	1.06	0.63	0.08	3.55	0.42	139.00	39.11
43	1.04	1.01	0.18	3.06	0.23	85.38	27.93
44	1.02	1.85	0.18	5.22	0.47	94.00	18.01
45	1.02	0.95	0.18	4.59	0.50	132.00	28.73
46	1.01	0.74	0.10	3.44	0.37	183.00	53.18
47	1.01	0.65	0.20	3.34	0.50	120.00	35.98
48	1.01	1.04	0.21	2.55	0.41	119.00	46.68
49	1.00	1.05	0.13	2.09	0.36	190.00	90.70
Minimum	1.00	0.42	0.04	2.00	0.12	74.75	12.63
Maximum	2.67	1.90	0.43	6.73	2.29	204.00	90.70
Average	1.45	1.01	0.17	4.11	0.68	121.35	32.37

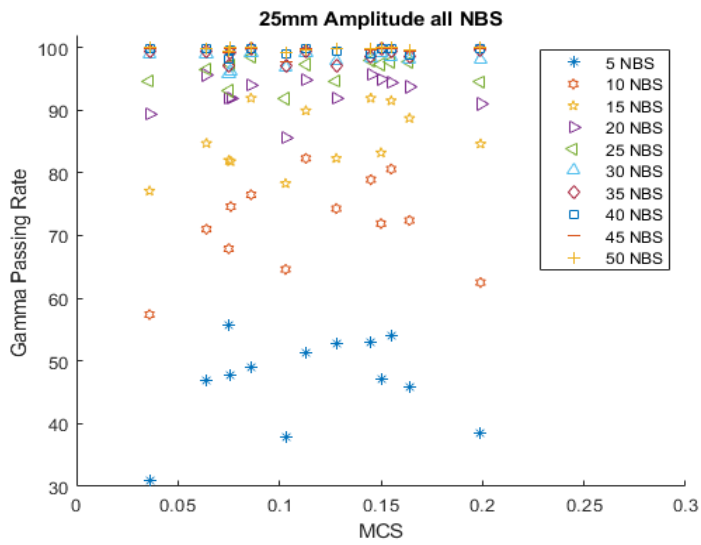
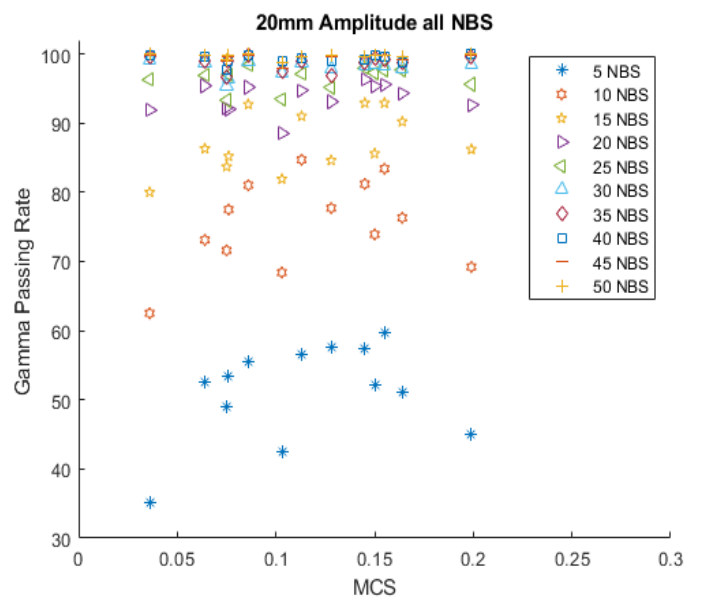
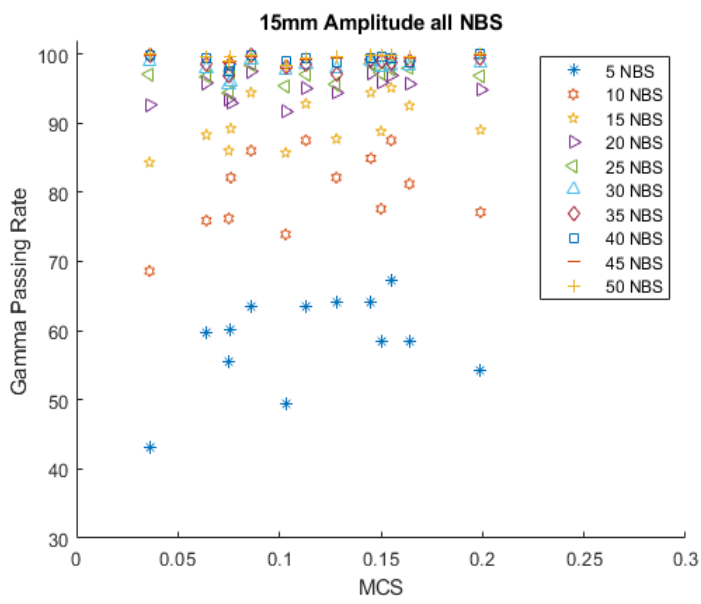
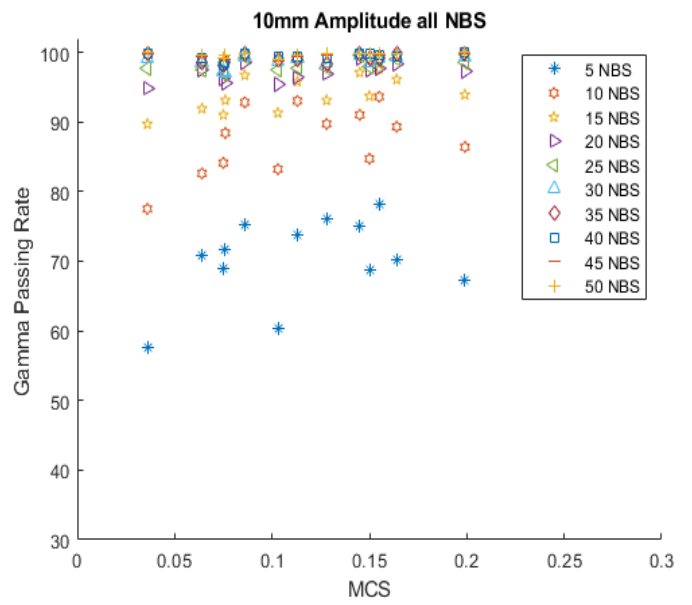
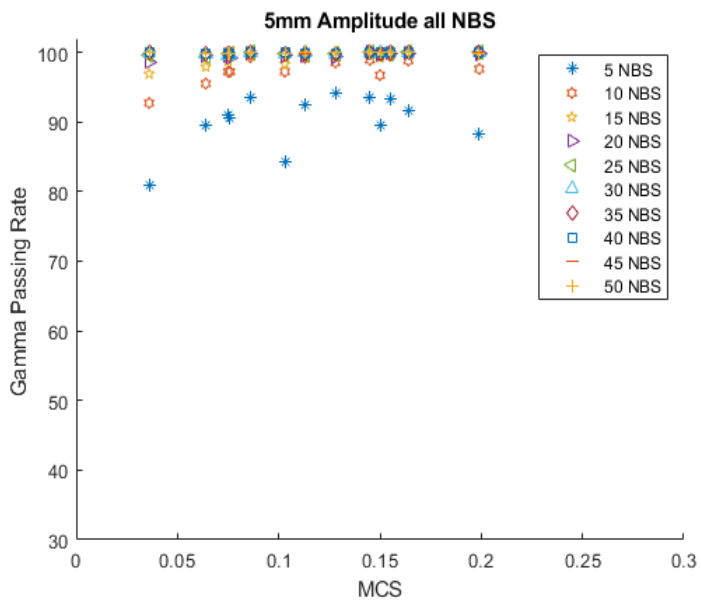
Supplementary Figures





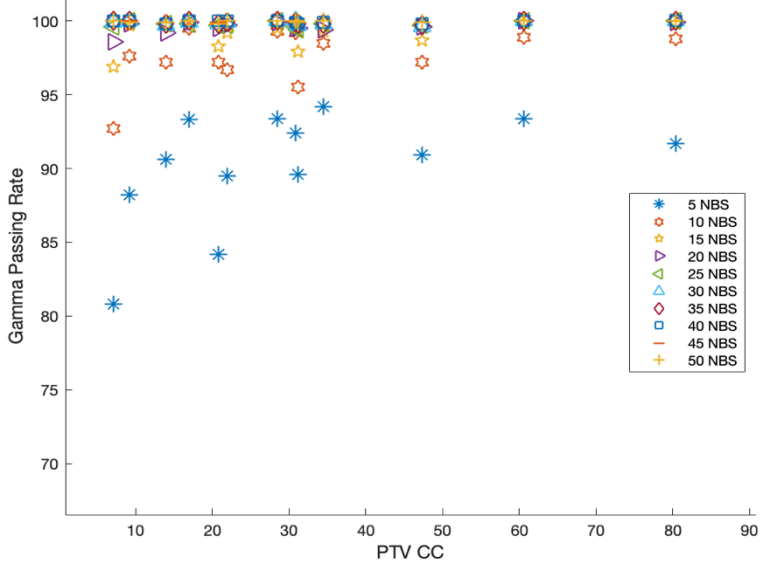


Figure_S 1 The gamma Passing rate versus the number of breaths (NBs) per irradiation time for thirteen plans.

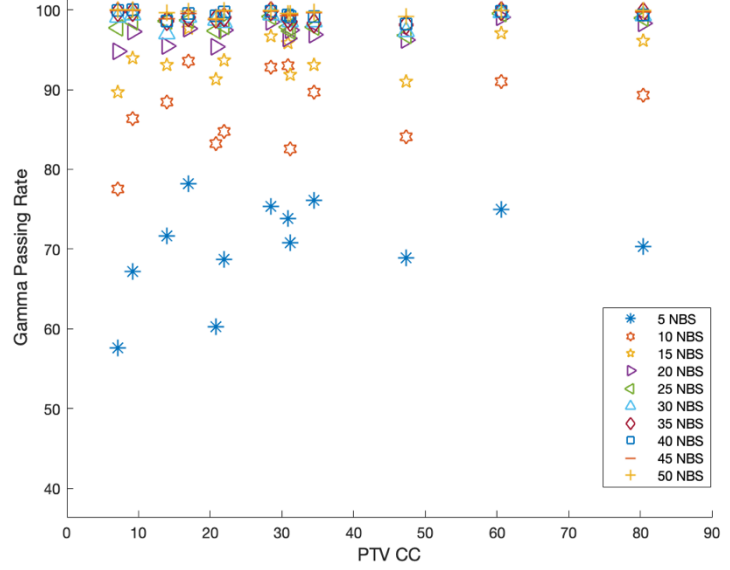


Figure_S 2: The gamma Passing rate versus plan complexity (MCS) for all amplitudes (5, 10, 15, 20 and 25 mm) and NBS (5-50).

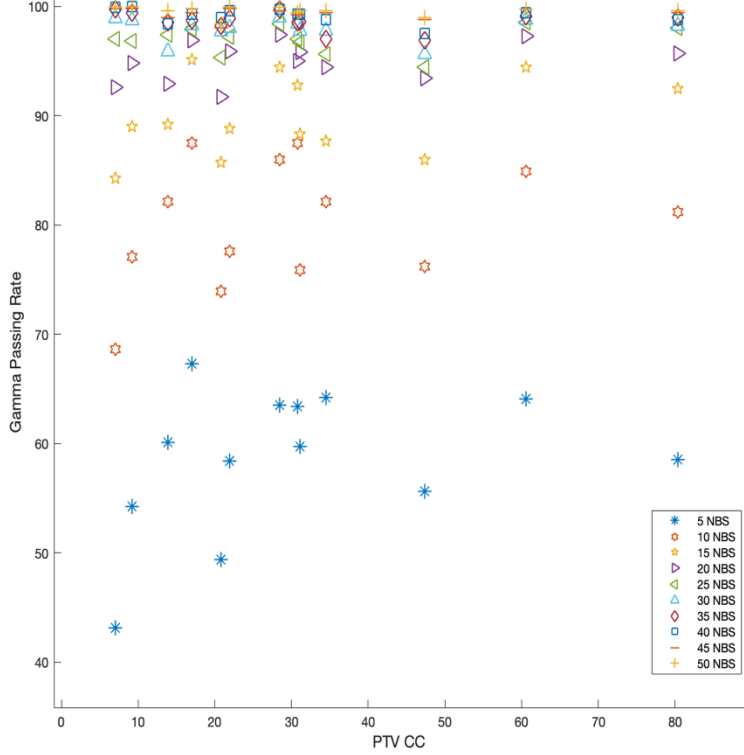
5mm Amplitude all NBS



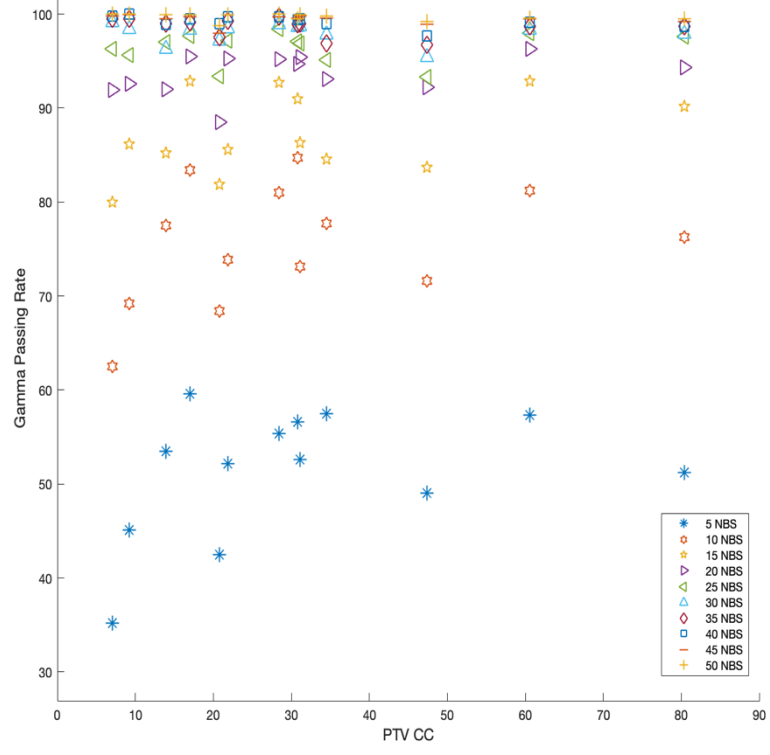
10 mm Amplitude all NBS

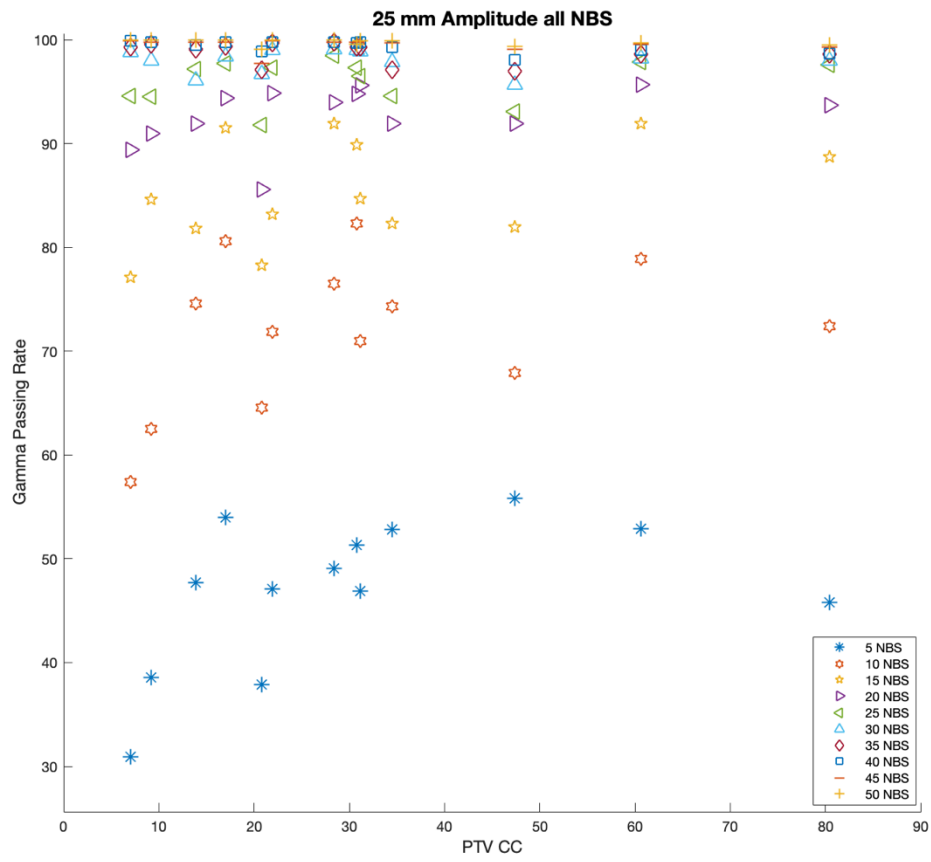


15 mm Amplitude all NBS



20 mm Amplitude all NBS





Figure_S 3: The gamma Passing rate versus PTV size for all amplitudes (5, 10, 15, 20 and 25 mm) and NBS (5-50).