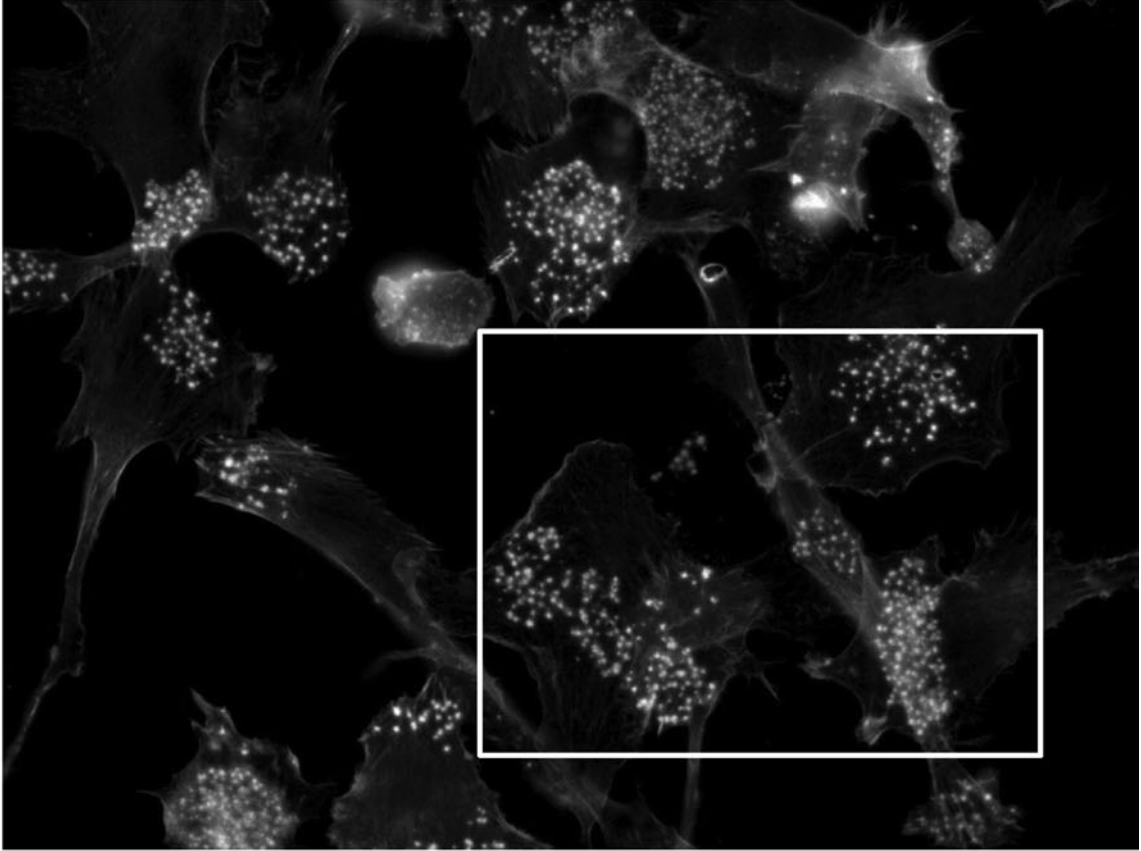
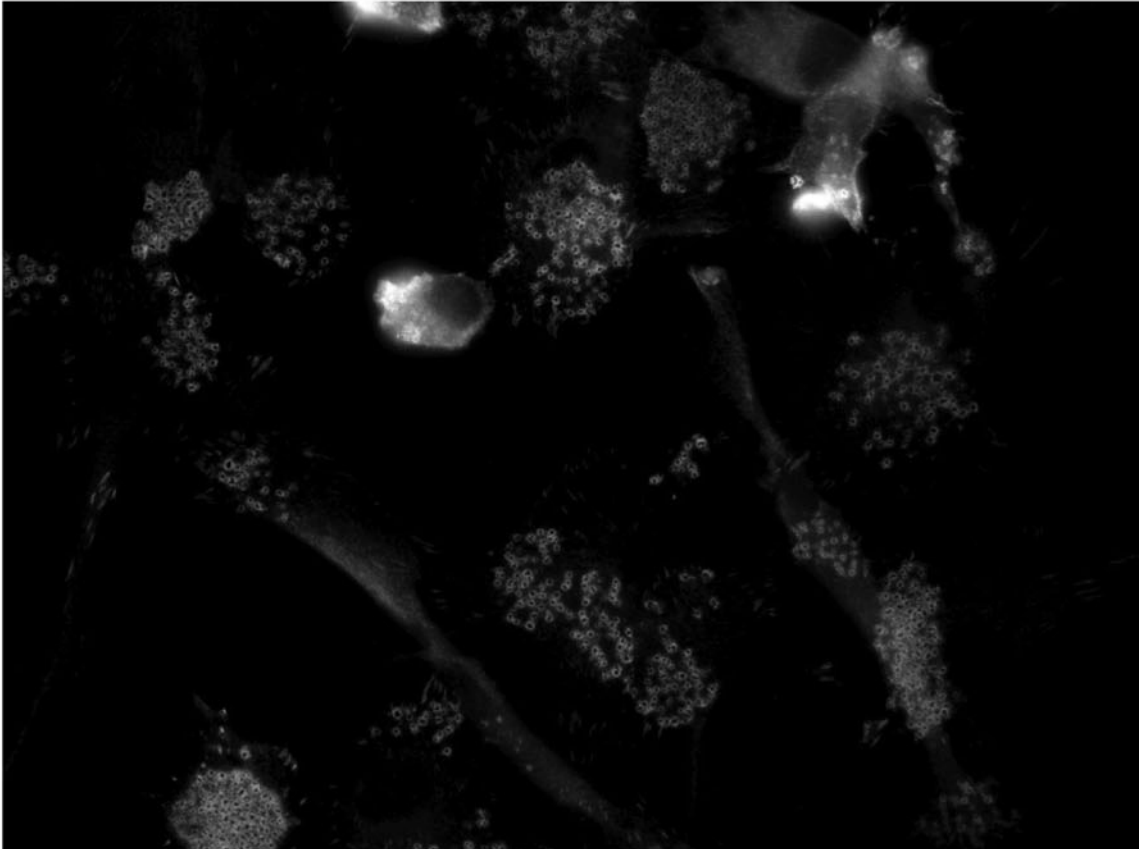


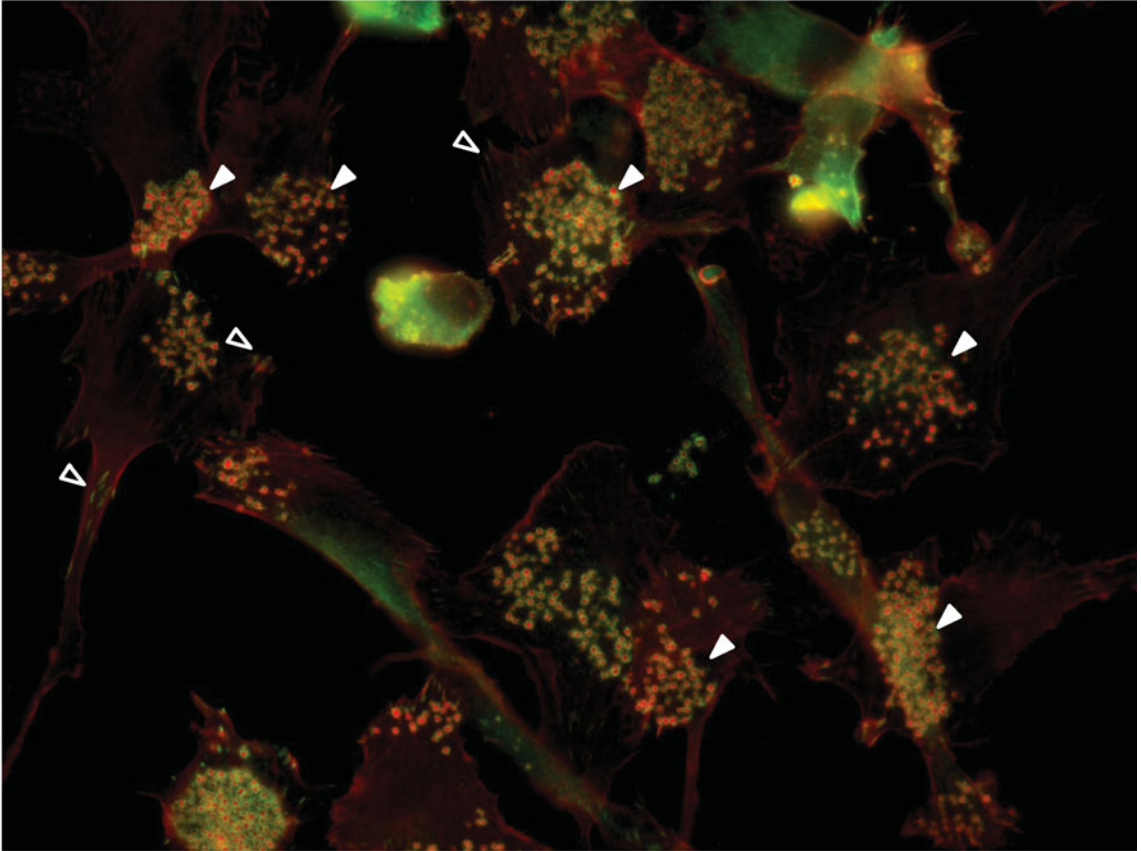
A



B



C



**Supplementary Figure 1.** Representative image of DCs stained for actin and vinculin. Cells were seeded on glass coverslips and left to adhere for 3 h. Cells were subsequently fixed and stained with Texas Red-conjugated phalloidin and a monoclonal antivinculin antibody to visualize (A) actin and (B) vinculin, respectively. The white square in A is the cropped region shown in Figures 2A and 2B. (C) Merged image showing actin in red and vinculin in green, which was used by the experts to identify podosomes. Closed arrow heads indicate podosome clusters, open arrow heads indicate focal adhesions.