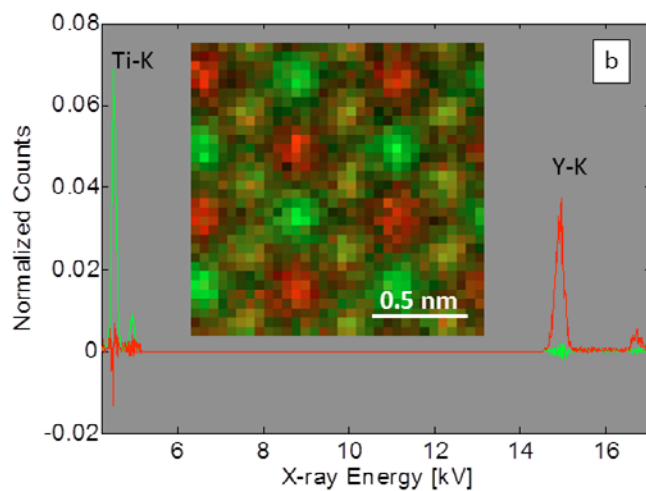
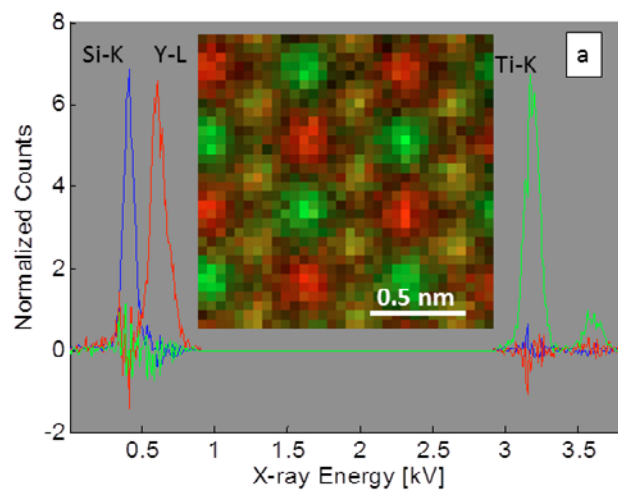
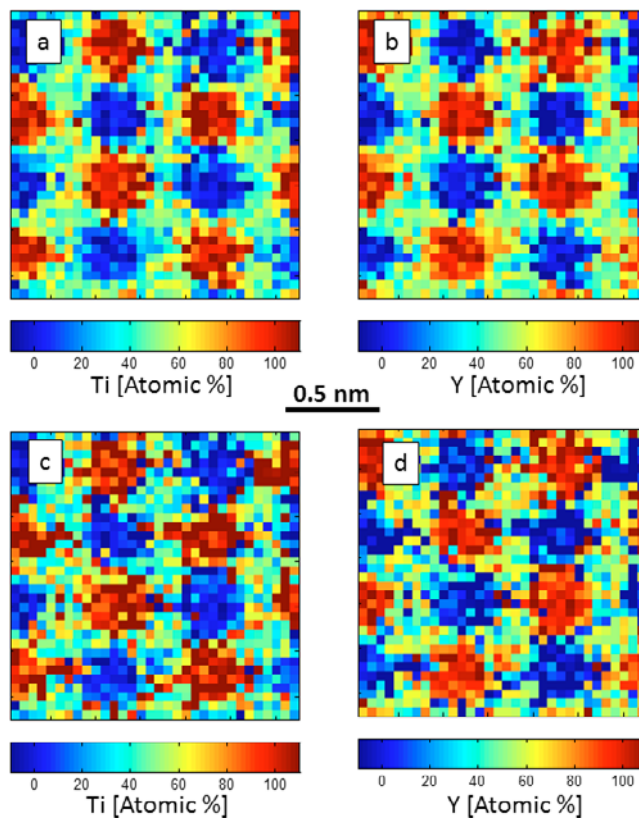


**Supplementary Figure 3.** Comparison of post-MSA segmentation of the full spectral image quantifying only the Ti-K and Y-L (a, b) and Ti-K and Y-K (c, d). Note that the two analyses look identical owing to the MSA, which inextricably links the co-varying signals of Y-L and Y-K.



**Supplementary Figure 4.** a: MSA analysis from the pre-MSA partitioned spectral image using only the Ti-K and Y-L. b: MSA analysis from the pre-MSA partitioned spectral image using only the Ti-K and Y-K.



**Supplementary Figure 5.** **a, b:** Concentration images from the pre-MSA partitioned and subsequent quantification using only the Ti-K and Y-L. **c, d:** Concentration images from the pre-MSA partitioned and subsequent quantification using only the Ti-K and Y-K.