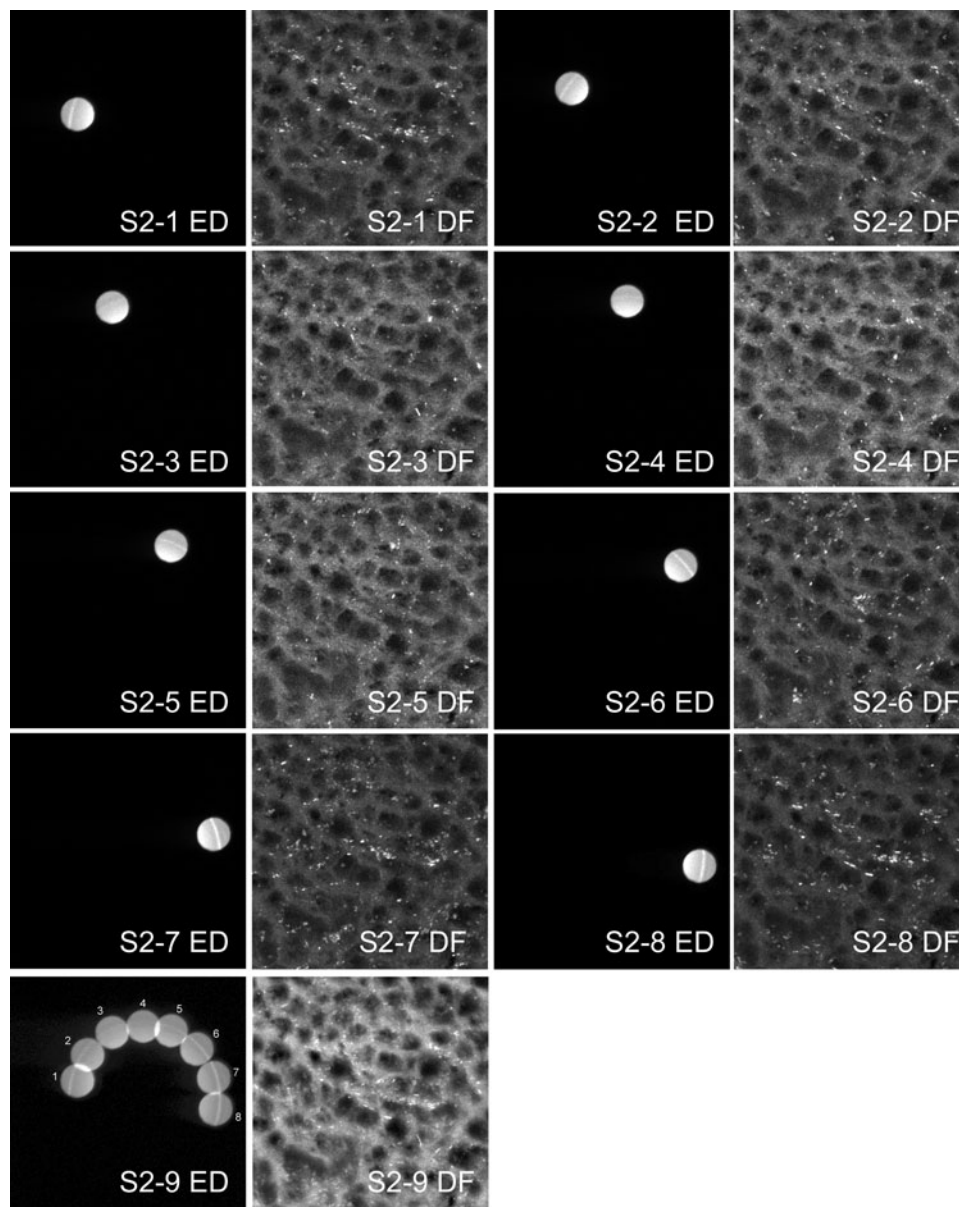


**Supplementary Figure 1.** SAED and DF-TEM images of the longitudinal view of the internal layer (S1-1–S1-7). Images on the left are SAED images selected by objective aperture and are paired with the corresponding DF image on the right. The two S1-8 images, left and right, depict the superimposed SAED data and DF-TEM image, respectively. The DF-TEM image of S1-8 is the same image as Figure 3b.



**Supplementary Figure 2.** SAED and DF-TEM images of the transverse view of the internal layer (S2-1–S2-8). Images on the left are SAED images selected by objective aperture and right images are paired with the corresponding DF image on the right. The two S2-9 images, left and right, depict the superimposed SAED data and DF-TEM image, respectively. The DF-TEM image of S2-9 is the same image as Figure 6b.