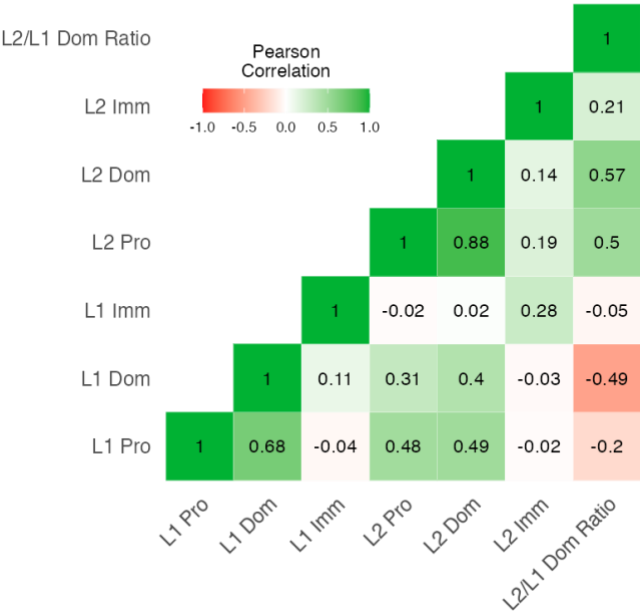


Supplementary Materials for Graded Bilingual Effects on Attentional Network Function in Chinese High School Students



Correlation heatmap between LHQ-3 linguistic aggregate scores.

Summary of executive control results: Center cue model

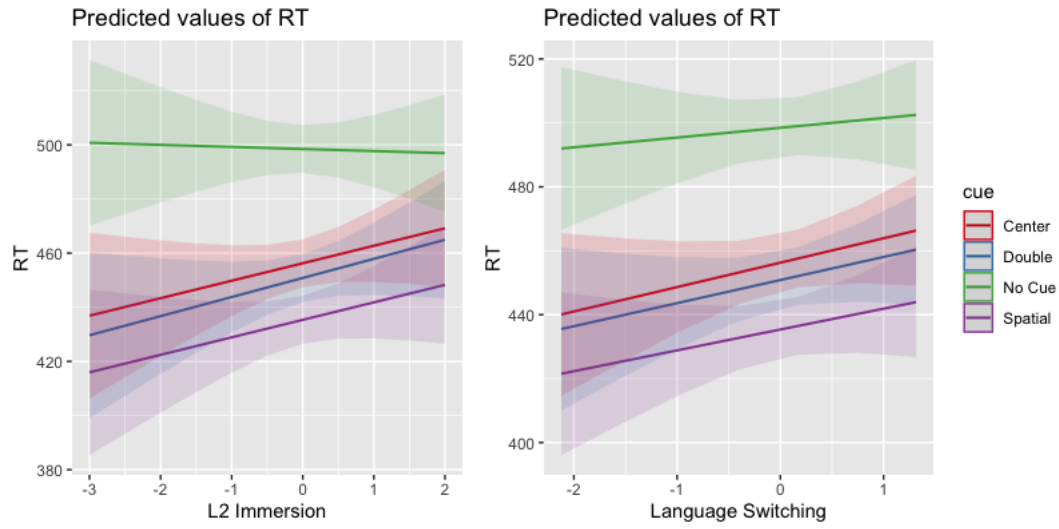
Fixed effects	<i>t</i> value	Std. error	<i>p</i> value	95% CI
Intercept	534.03	0.005	< 0.001	2.651, 2.670
Incongruent condition	-19.07	0.003	< 0.001	-0.059, -0.048
L2 proficiency X Incongruent	1.39	0.006	0.165	-0.003, 0.020
L2 immersion X Incongruent	2.52	0.003	0.012	0.002, 0.014
L2/L1 dominance ratio X Incongruent	-0.50	0.007	0.620	-0.016, 0.010
Switching frequency X Incongruent	-1.27	0.003	0.204	-0.011, 0.002
Random effects	<i>Variance</i>	<i>SD</i>		
Subject (intercept)	0.001	0.025		
Residual	0.004	0.059		

Summary of executive control results: Double cue model

Fixed effects	<i>t</i> value	Std. error	<i>p</i> value	95% CI
Intercept	521.57	0.005	< 0.001	2.644, 2.663
Incongruent condition	18.29	0.003	< 0.001	0.045, 0.056
L2 proficiency X Incongruent	0.80	0.006	0.426	-0.007, 0.016
L2 immersion X Incongruent	-3.54	0.003	< 0.001	-0.017, -0.005
L2/L1 dominance ratio X Incongruent	0.58	0.006	0.563	-0.009, 0.016
Switching frequency X Incongruent	1.64	0.003	0.100	-0.001, 0.012
Random effects	<i>Variance</i>	<i>SD</i>		
Subject (intercept)	0.001	0.026		
Residual	0.003	0.059		

Summary of executive control results: Spatial cue model

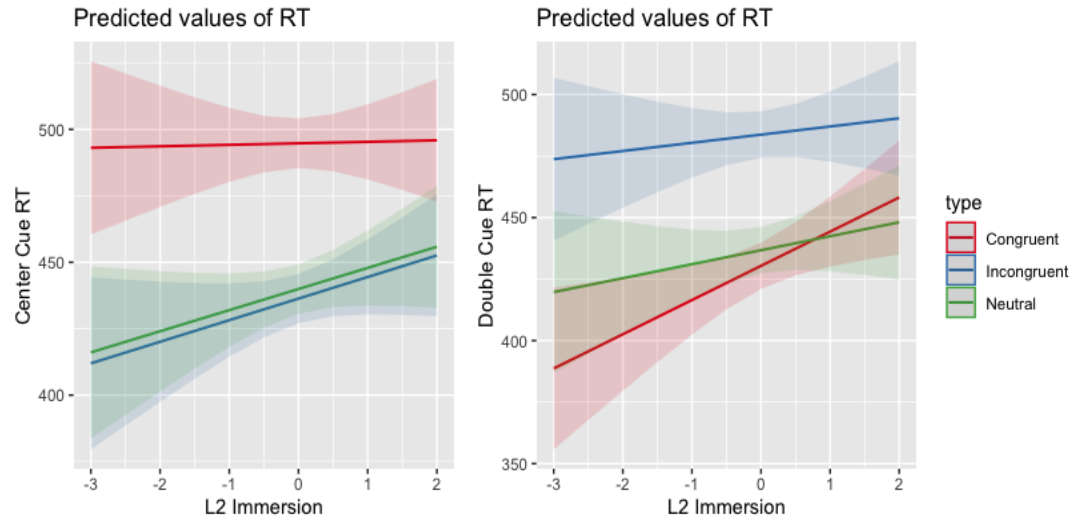
Fixed effects	<i>t</i> value	Std. error	<i>p</i> value	95% CI
Intercept	494.96	0.005	< 0.001	2.628, 2.649
Incongruent condition	-16.78	0.003	< 0.001	-0.052, -0.041
L2 proficiency X Incongruent	-3.21	0.006	0.001	-0.031, -0.007
L2 immersion X Incongruent	2.08	0.003	0.037	0.000, 0.0128
L2/L1 dominance ratio X Incongruent	1.94	0.007	0.052	-0.000, 0.025
Switching frequency X Incongruent	-1.42	0.003	0.157	-0.011, 0.002
Random effects	<i>Variance</i>	<i>SD</i>		
Subject (intercept)	0.001	0.027		
Residual	0.003	0.059		



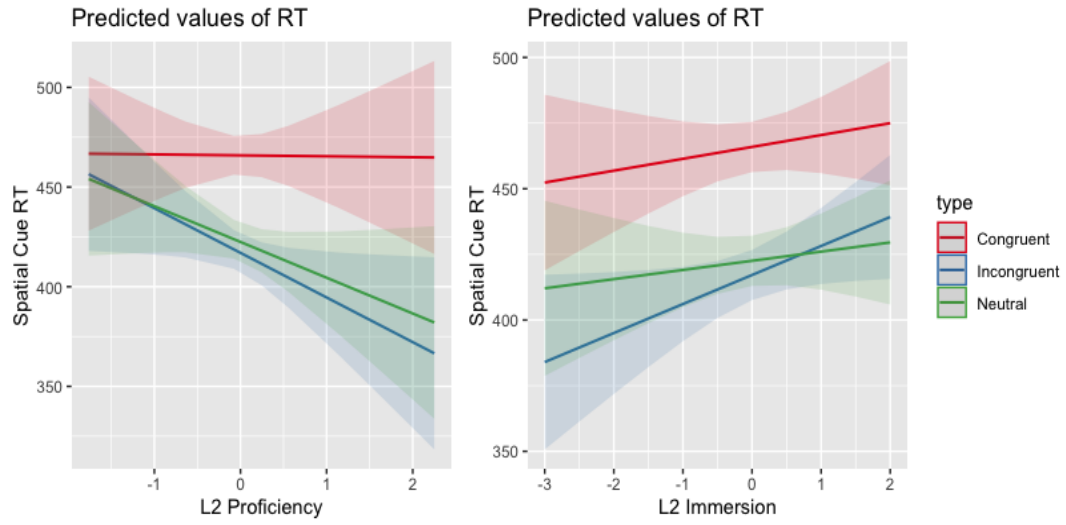
Cue condition interactions with reported L2 immersion and language switching frequency (95% confidence interval). RT is plotted on its original scale for display purposes.



Cue condition interactions with reported L2 proficiency and L2/L1 dominance ratio (95% confidence interval). RT is plotted on its original scale for display purposes.



Congruency condition interactions with reported L2 immersion in center cue and double cue models (95% confidence interval). RT is plotted on its original scale for display purposes.



Congruency condition interactions with reported L2 proficiency and L2 immersion from spatial cue model (95% confidence interval). RT is plotted on its original scale for display purposes.