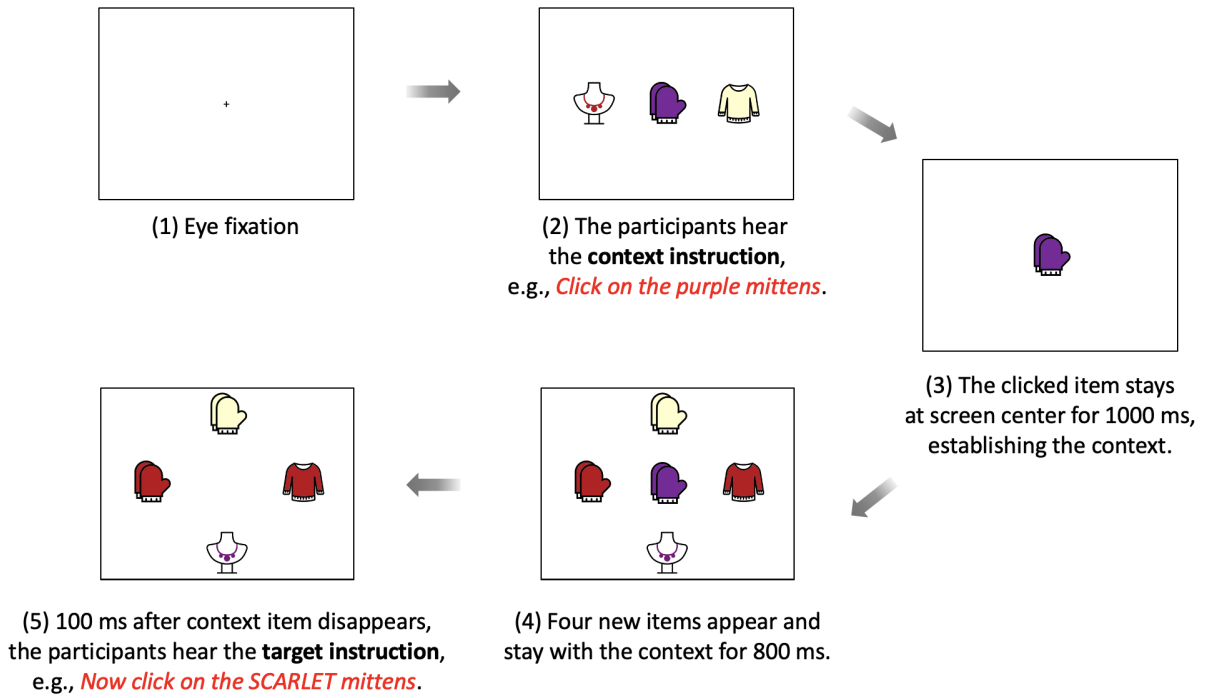
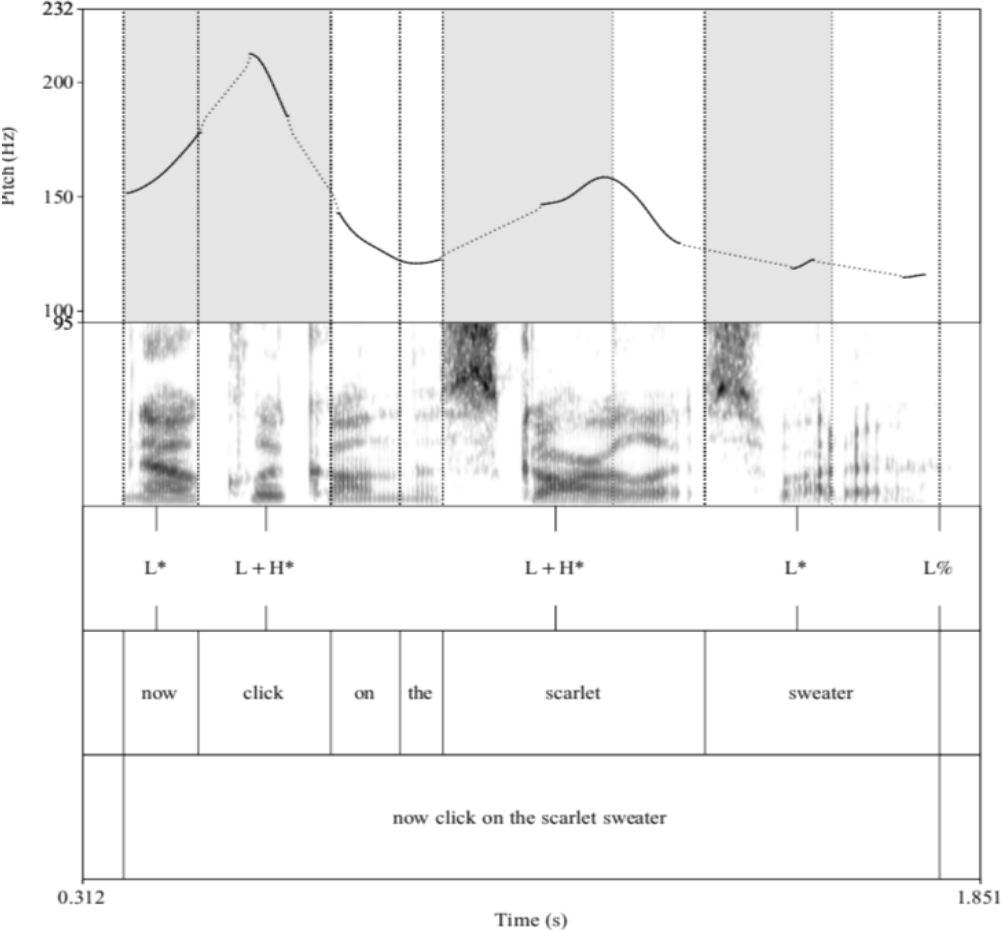


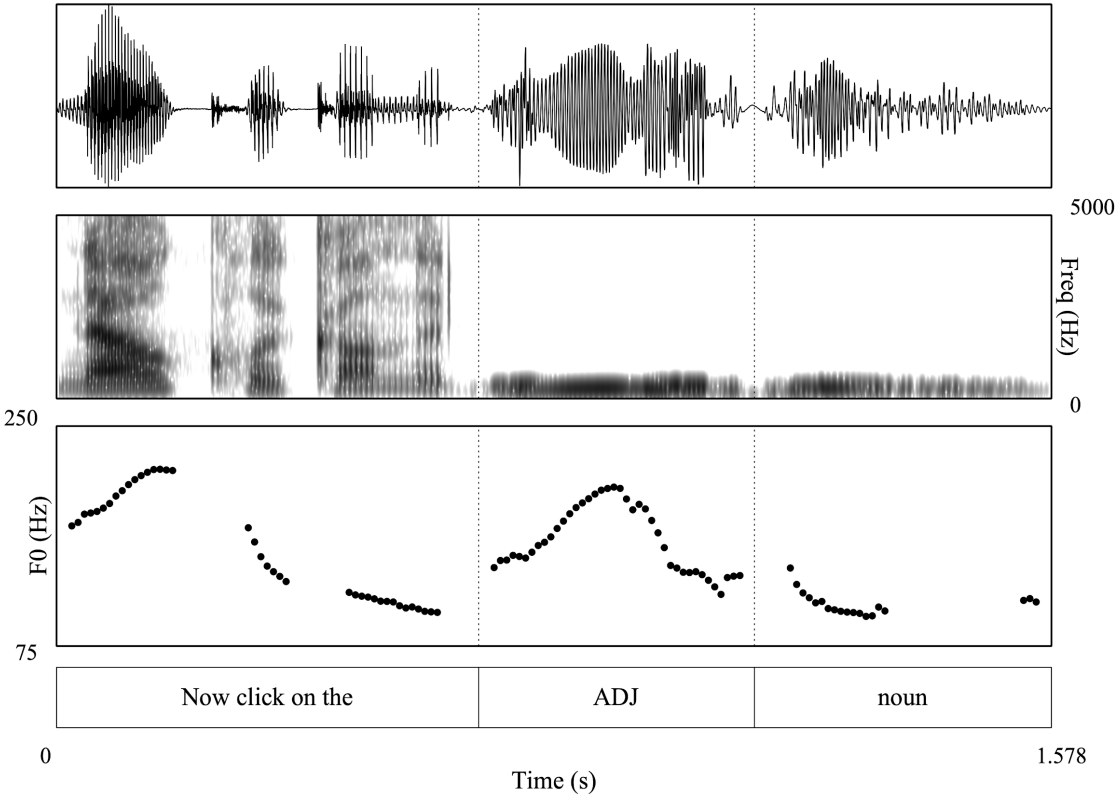
Appendix S1. Experimental procedure



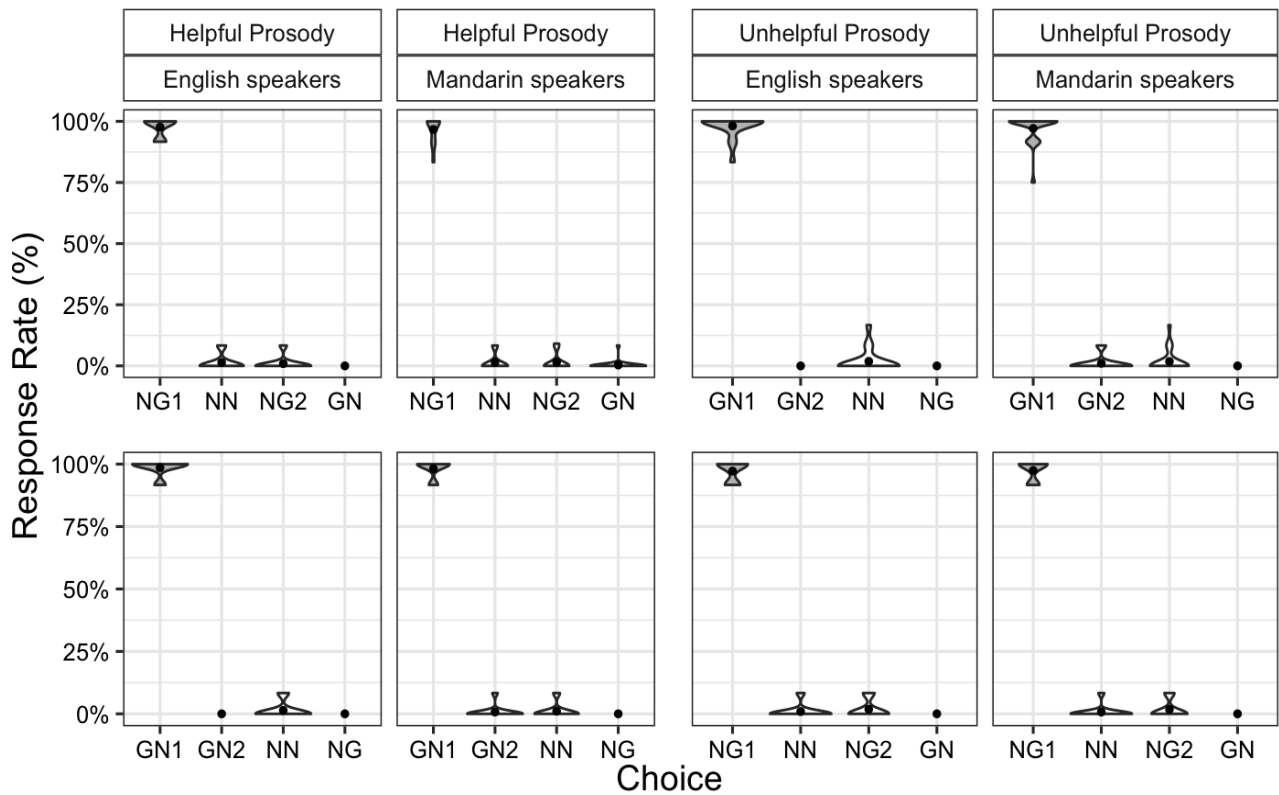
Appendix S2. ToBI transcribed instruction stimulus with the focus on the adjective



Appendix S3. Audio file with two NPs low-pass filtered and combined.



Appendix S4. English and Mandarin speakers' proportions of responses to each choice for ADJ-focus prosody (top) and for NOUN-focus prosody (bottom), unmasked speech. The length of the violins represents the range of y values; the width of the violins represents the density at a given y value; and the black dots represent the mean. The first dark grey violin in each panel indicates clicks on the choice that is consistent with the target segmental information. N stands for 'New' and G for 'Given'.



Appendix S5. Bivariate plots of Mandarin speakers' individual background factors and their ability to choose a prosodically appropriate item with masked stimuli in the ADJ-focus, Helpful Prosody condition.

