

**Sustainable agriculture in the Blue Nile Basin:
Land and watershed management practices in Ethiopia**

EMILY SCHMIDT, Corresponding Author
Development Strategy and Governance Division, International Food Policy
Research Institute (IFPRI), IFPRI c/o DSG, 2033 K Street, NW, Washington
DC 20006-1002, USA. Email: e.schmidt@cgiar.org

FANAYE TADESSE
Ethiopia Strategy Support Program II, International Food Policy Research
Institute (IFPRI). Email: fanaye.t@gmail.com

Online Appendix

Table A2. *First stage Maximum likelihood estimates on treatment level*

	Coef.	Std. Err.
Household size	0.00	0.01
Education of head (literate=1)	0.04	0.03
Fertilizer use (=1)	-0.10	0.03
Experienced flood/erosion (=1)	-0.16	0.03
Age of household head	0.00	0.00
Sex of household head	0.00	0.04
Slope of plot (steep=1)	0.02	0.04
Soil quality	0.26	0.03
Semi-fertile (=1)	0.13	0.04
Non fertile (=1)	0.00	0.00
Number of years village had program on bunds and terraces	1.69	0.08

Source: Authors' calculations

Table A3. Average plot-level impact of SLWM adoption (controlling for crop choice)

Outcome variable: Value of Agricultural Production	# Observations	ATT: Nearest neighbor matching	ATT: Kernel matching	ATT: Radius matching
1992-2009	10108	0.089 *** -0.025	0.122 ** -0.022	0.101 -0.029
1992-2002	10108	0.272 *** -0.035	0.270 ** -0.037	0.324 *** -0.05
2003-2009	10108	0.045 -0.029	0.053 ** -0.022	0.076 -0.041

Source: Authors' calculations

Note: ATT = average treatment effect on the treated; *** significance level at 1%; standard errors are in brackets

Table A4. *Second stage OLS Estimates on log of value of production*

	Coeff.	Std. Err.
Time	-0.12	0.06
Time_squared	0.01	0.00
Log(score)	1.93	0.90
Log (score)_squared	-2.04	1.08
Time*score	0.05	0.05
_cons	8.16	0.20

Source: Authors' calculations

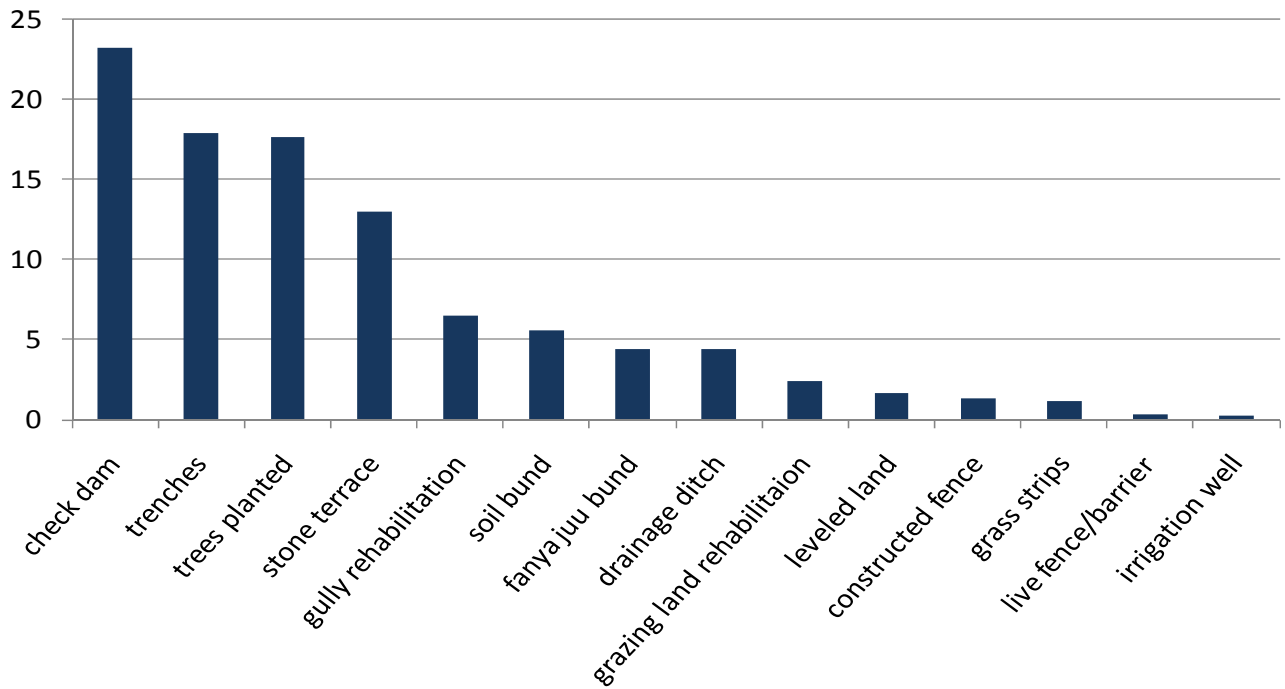


Figure A1. *SLWM activities implemented in the village (percent of total households)*

Source: Authors' calculations

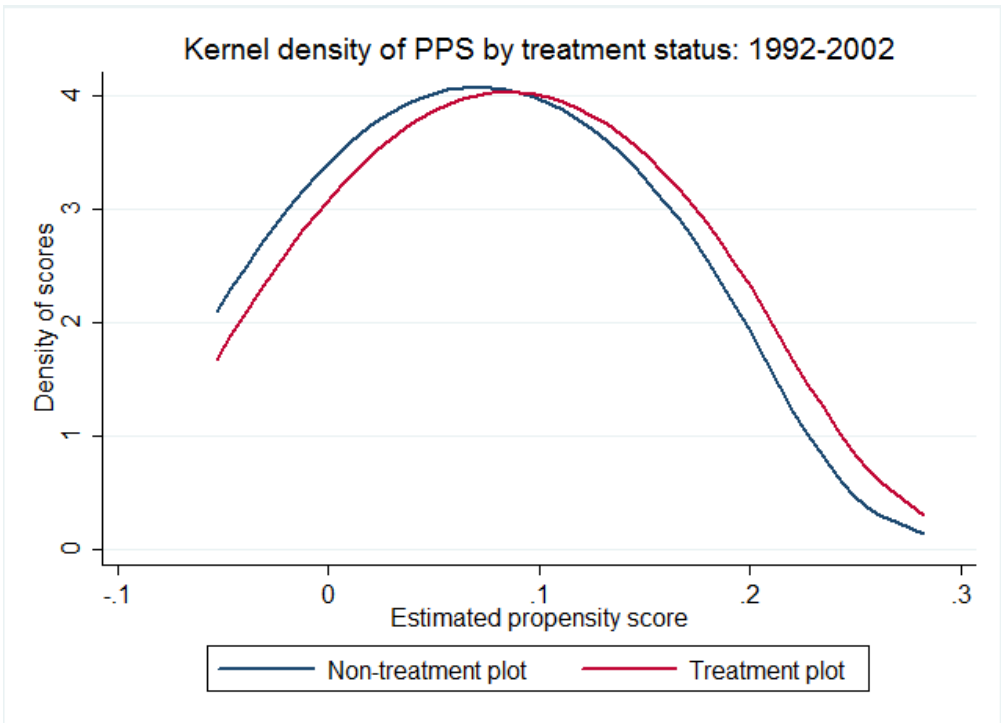
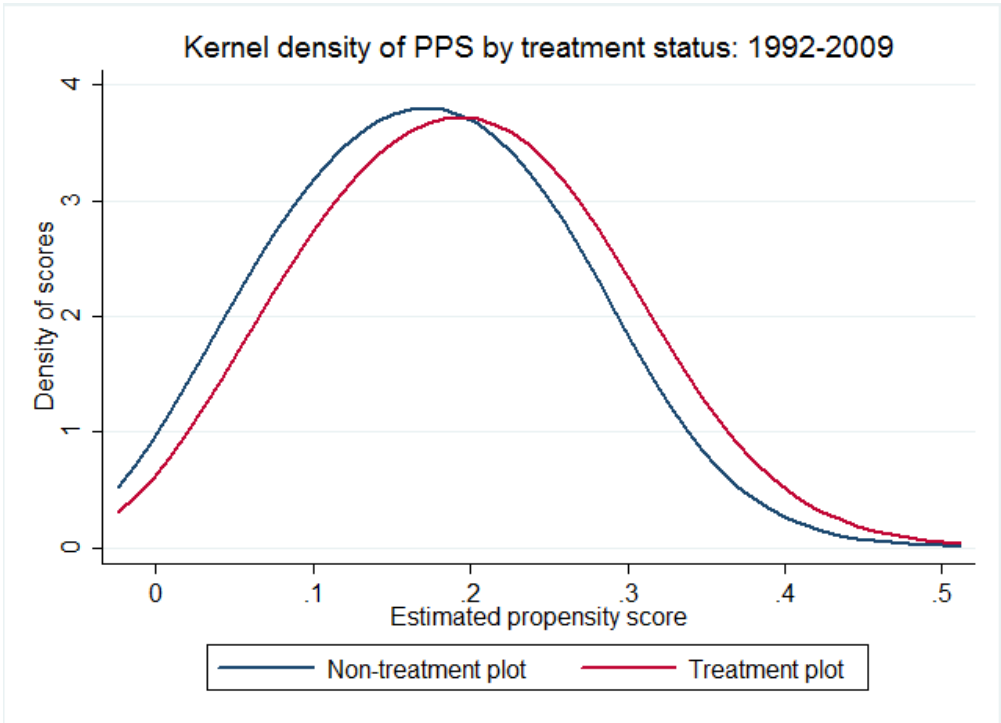


Figure A2. *Distribution of the propensity scores of both treated and non-treated plots*

Source: Authors' calculations

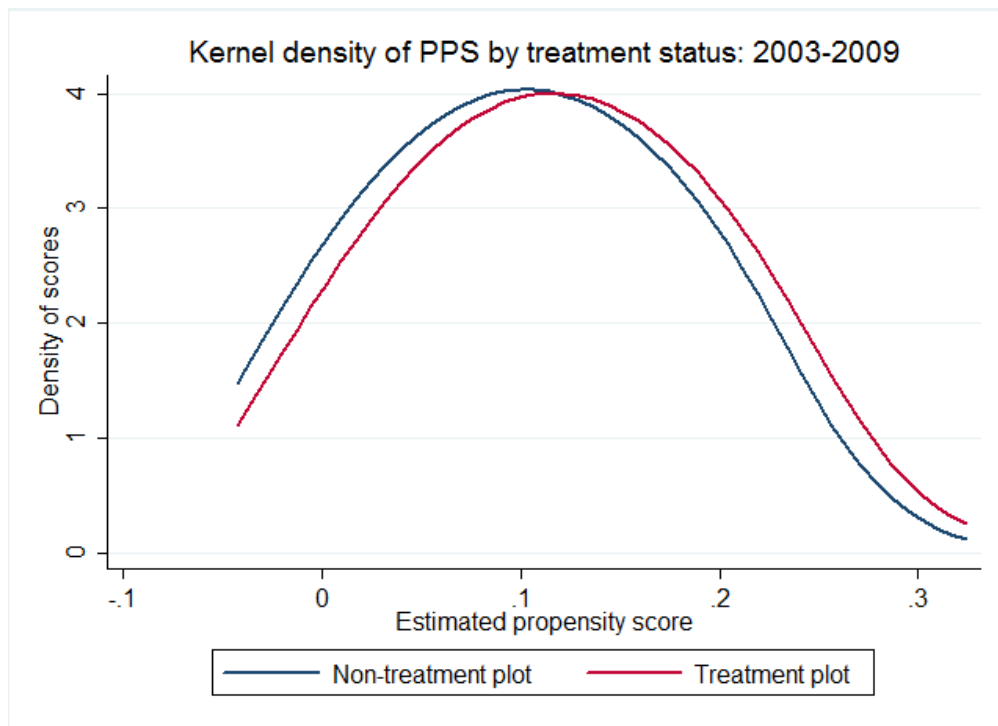


Figure A2 (Continued). *Distribution of the propensity scores of both treated and non-treated plots*

Source: Authors' calculations

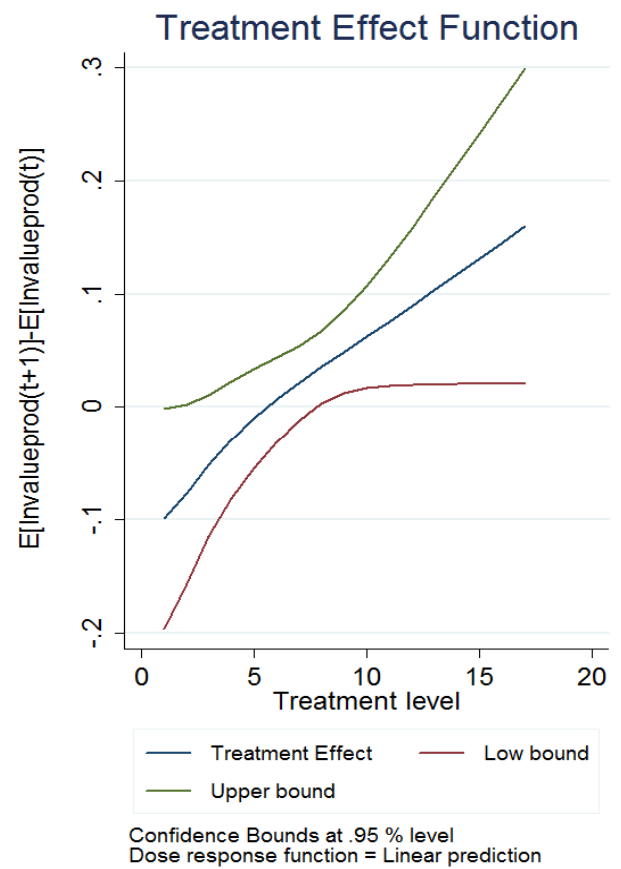
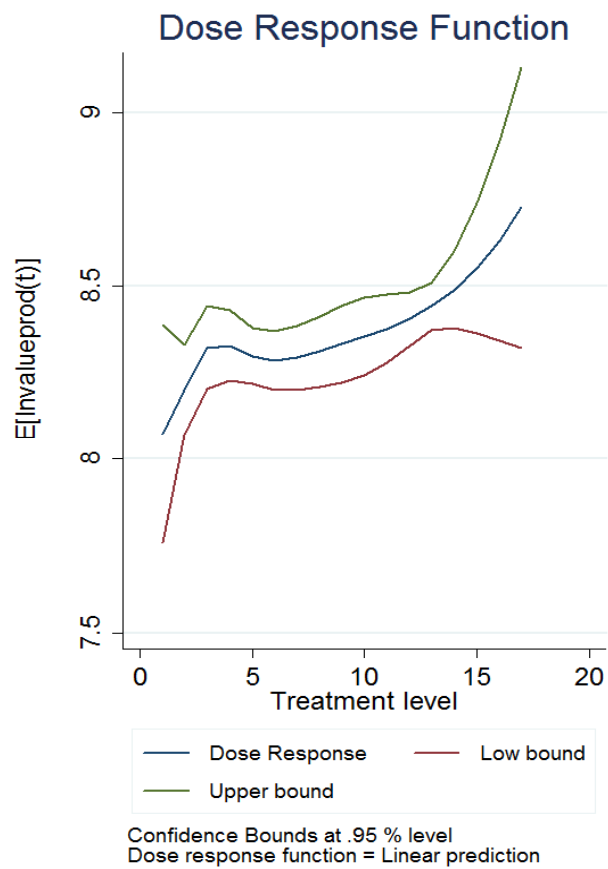


Figure A3. *Dose response function and treatment effect function*

Source: Authors' calculations