

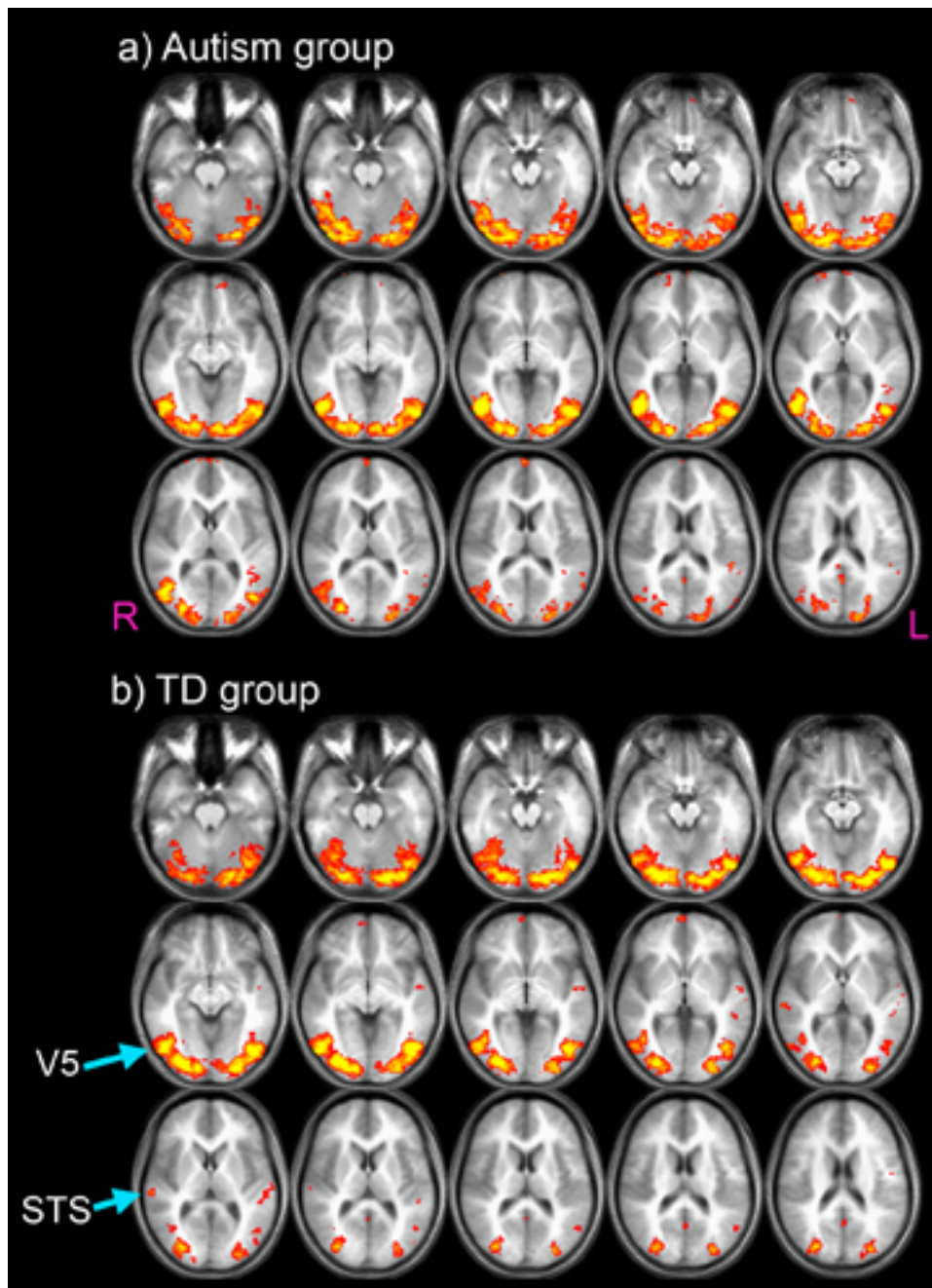
Supplemental Materials for:

Visual Motion Processing and Visual Sensorimotor Control in Autism

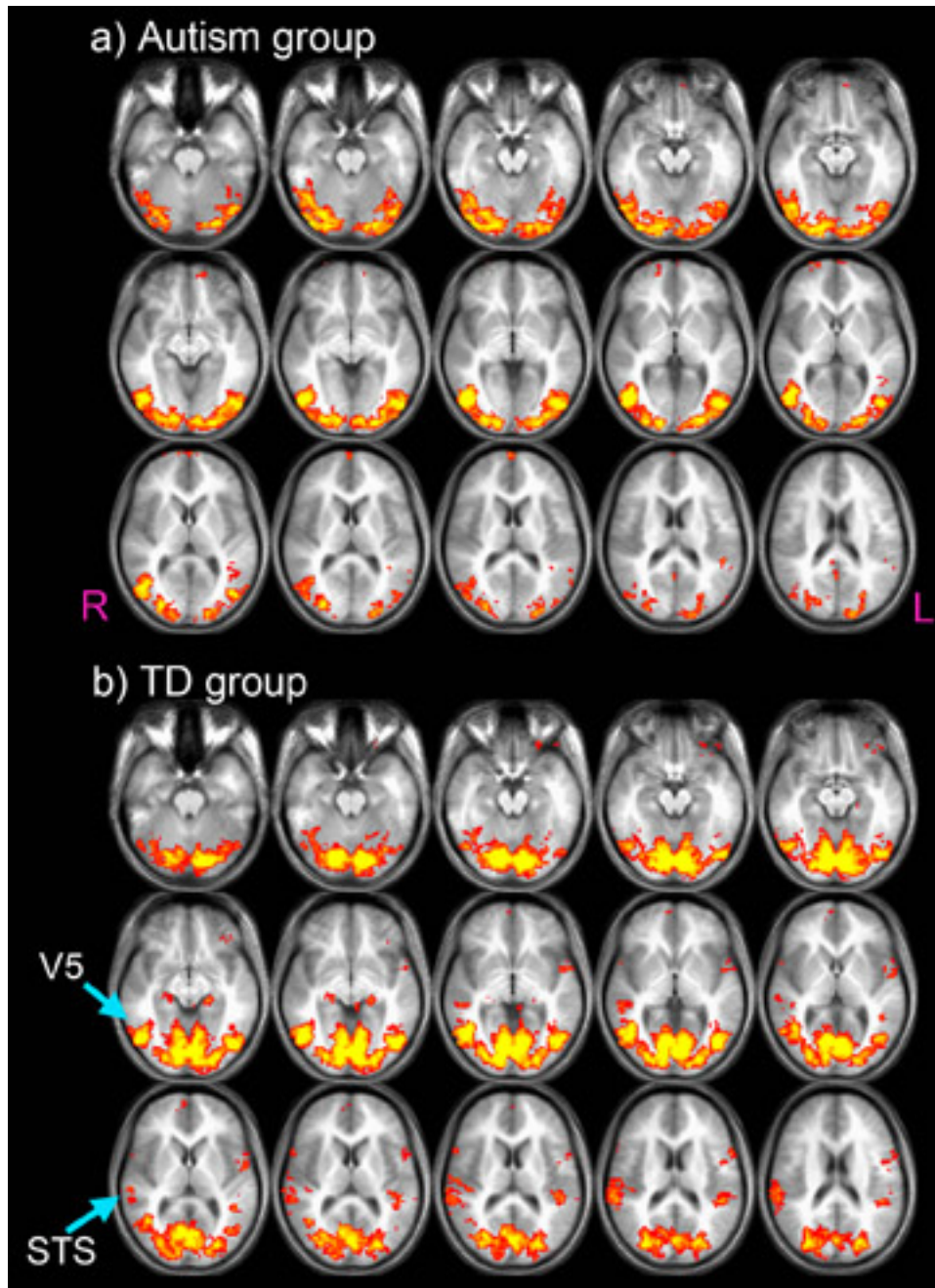
Yukari Takarae, Beatriz Luna, Nancy J. Minshew, and John A. Sweeney

Supplemental Figure 1:

Group level activation maps during passive viewing of movement in the visual cortex in the autism (a) and TD (b) groups. The slices cover $Z = -22$ to $+20$.



Supplemental Figure 2:
Activation maps during visual pursuit in the autism (a) and TD (b) groups ($Z = -22$ to $+20$).



Supplemental Figure 3

Group level activation maps during visual pursuit in the autism (a) and TD (b) groups (Z = +26 to +68).

