

Supporting Information for reviewing

Fig. S1:

Usual time-dependent change of FET mobility Pentacene/HMDS/SiO₂ FET

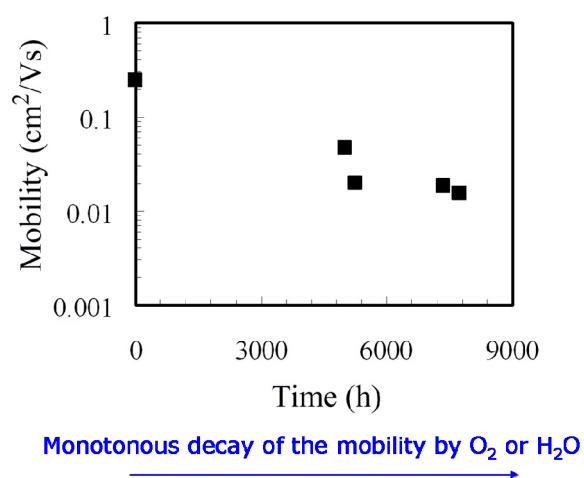
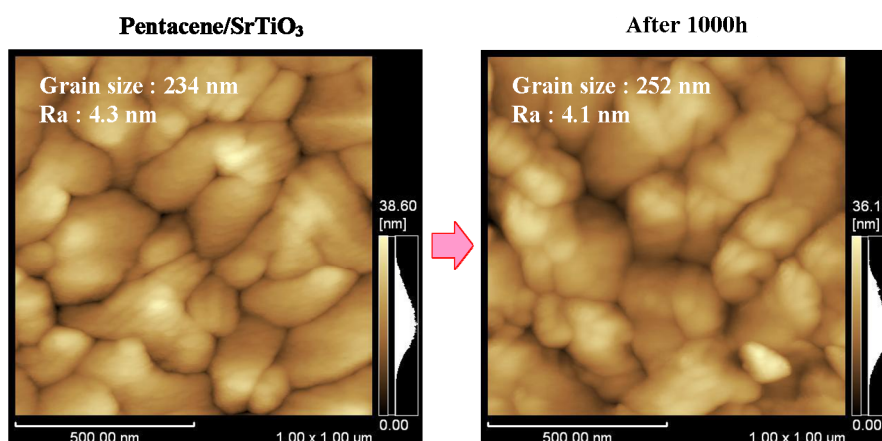


Fig. S2:

Pentacene Grains on SrTiO₃ Thin Film



No significant difference on the grain size of pentacene

Fig. S3:

Phase Transition of Pentacene Thin Film

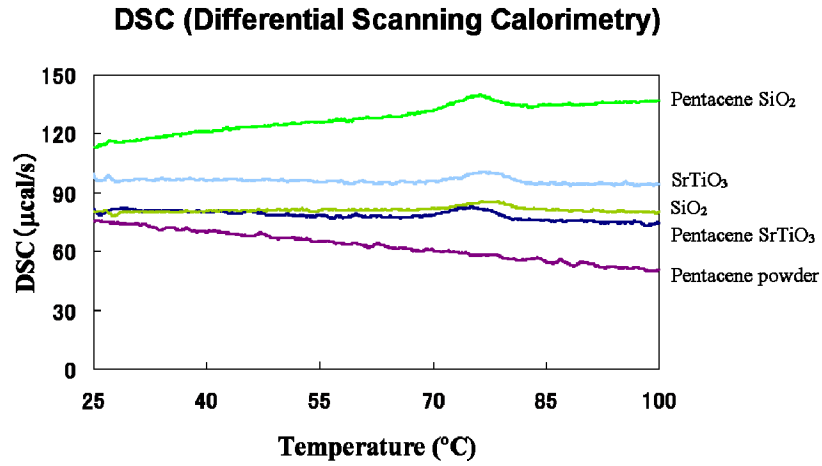


Fig. S4:

XRD Patterns of Pentacene Thin Films

