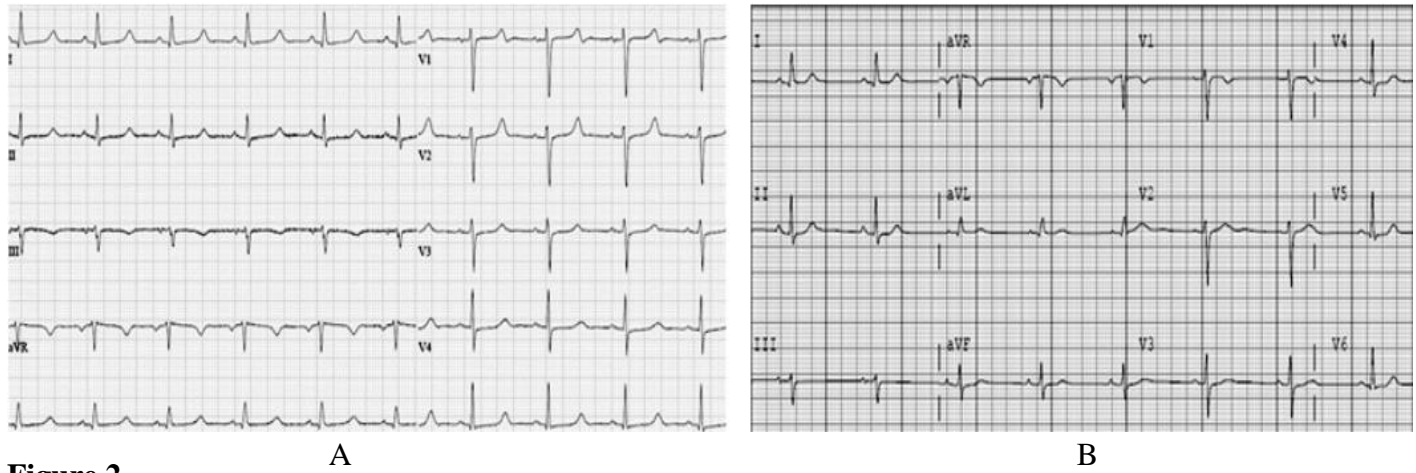


## Supplementary File

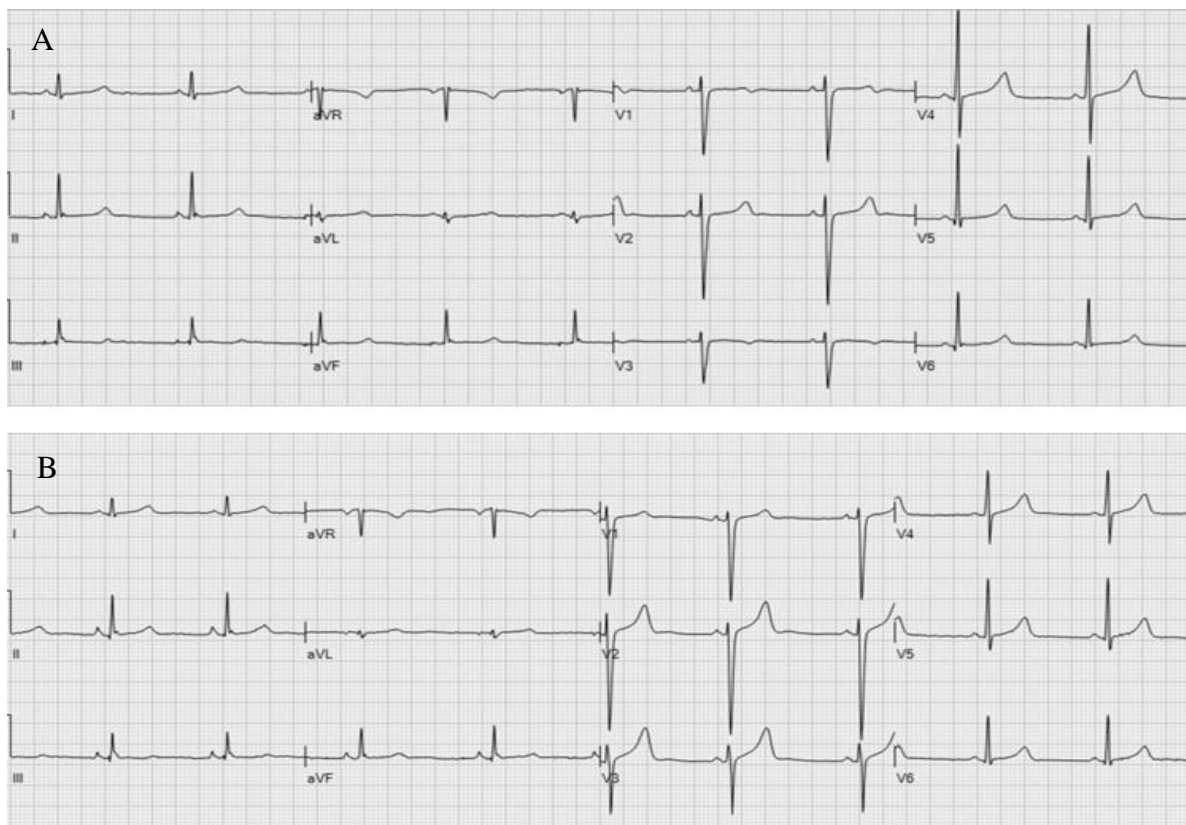
**Title:** Endocrinopathies mimicking gene negative Long QT Syndrome

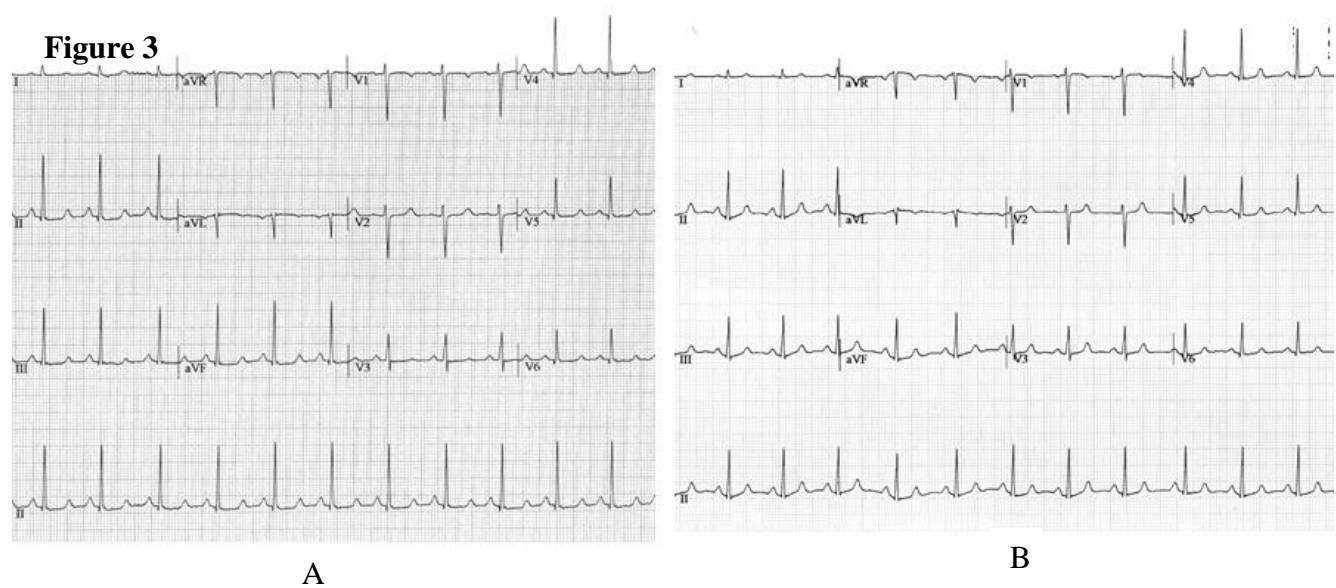
Praloy Chakraborty et al

**Figure 1**



**Figure 2**





### Figure Legends

**Figure 1:** Electrocardiograms of patient 3. A. Presenting ECG with QTc of 510 ms. B. Follow-up ECG 3 months after calcium and calcitriol replacement ECG showing normal QTc.

**Figure 2:** Electrocardiograms of patient 4. A. Presenting ECG with QT prolongation. B. Follow-up ECG 3 months after initiation of replacement therapy (QTc of 415 ms).

**Figure 3:** Electrocardiograms of patient 5. A. Presenting ECG with QT prolongation (QTc=480 ms). B. Follow-up ECG 6 months after calcium and calcitriol replacement showing normalization QTc.