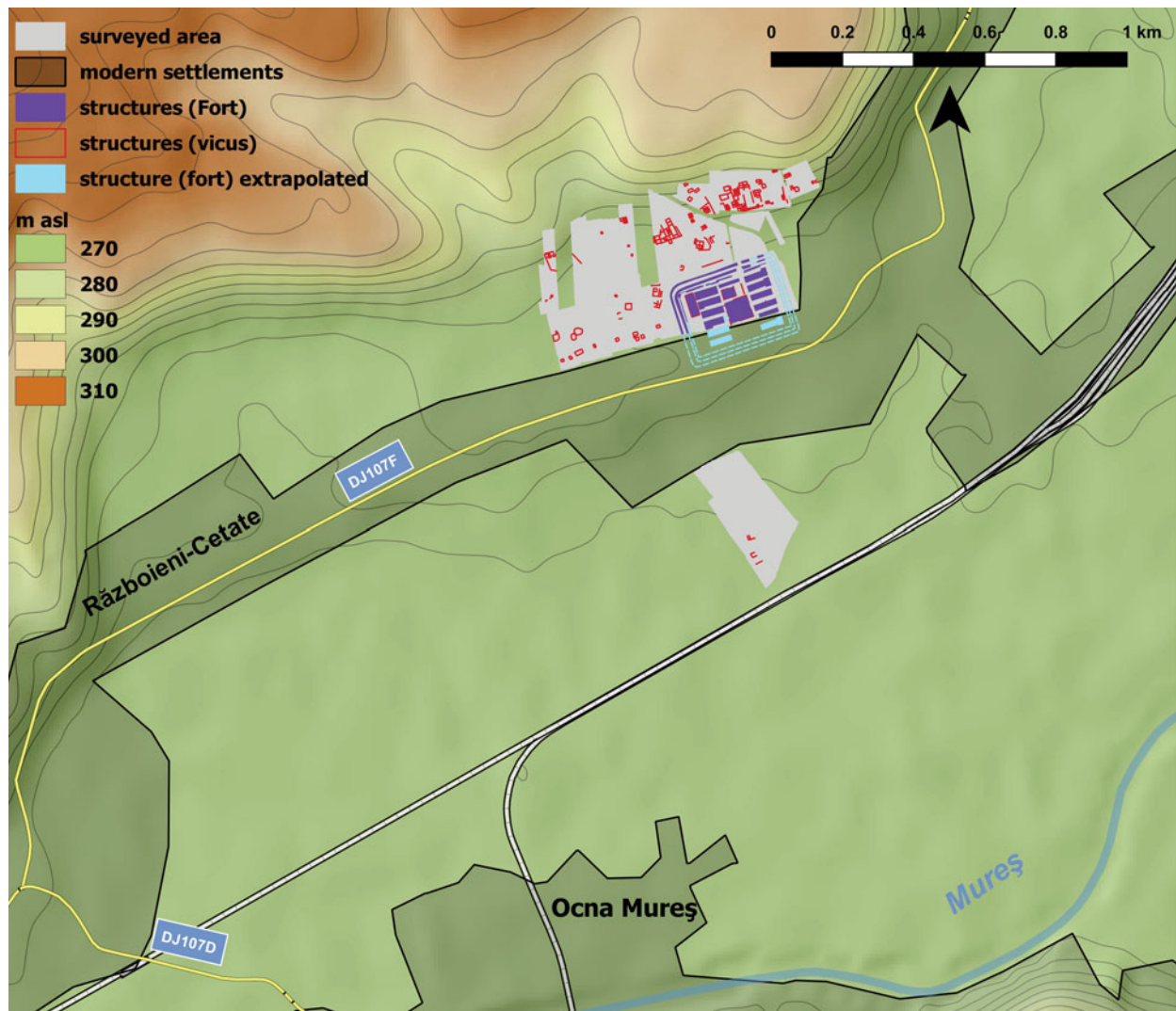


Of horses and men. Garrisoning the empire: stable-barracks on a grand scale in the auxiliary fort of the ala I Batavorum milliaria at Războieni-Cetate and the spatial planning of Roman forts

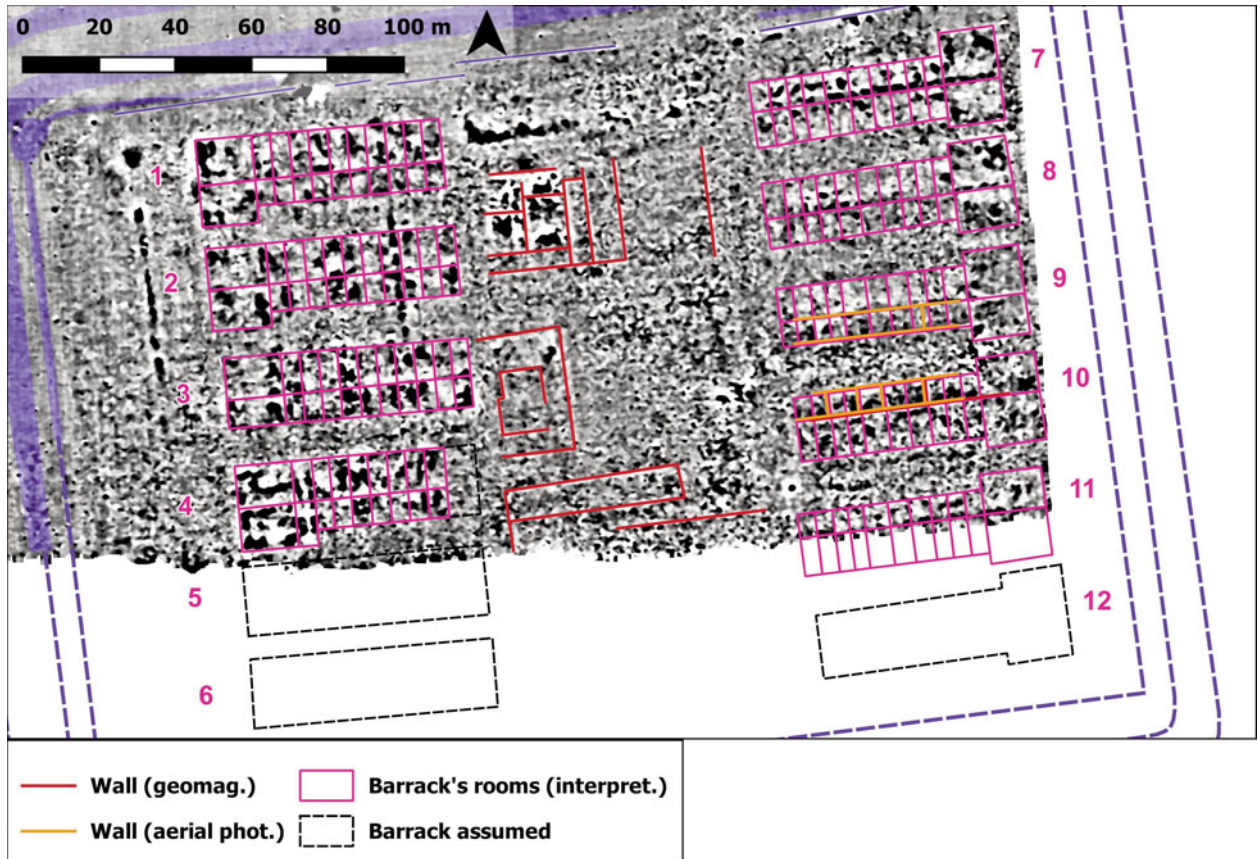
Alexander Rubel¹ and Carsten Mischka²

¹Institute of Archaeology of the Romanian Academy Iași <rubel@arheo.ro>

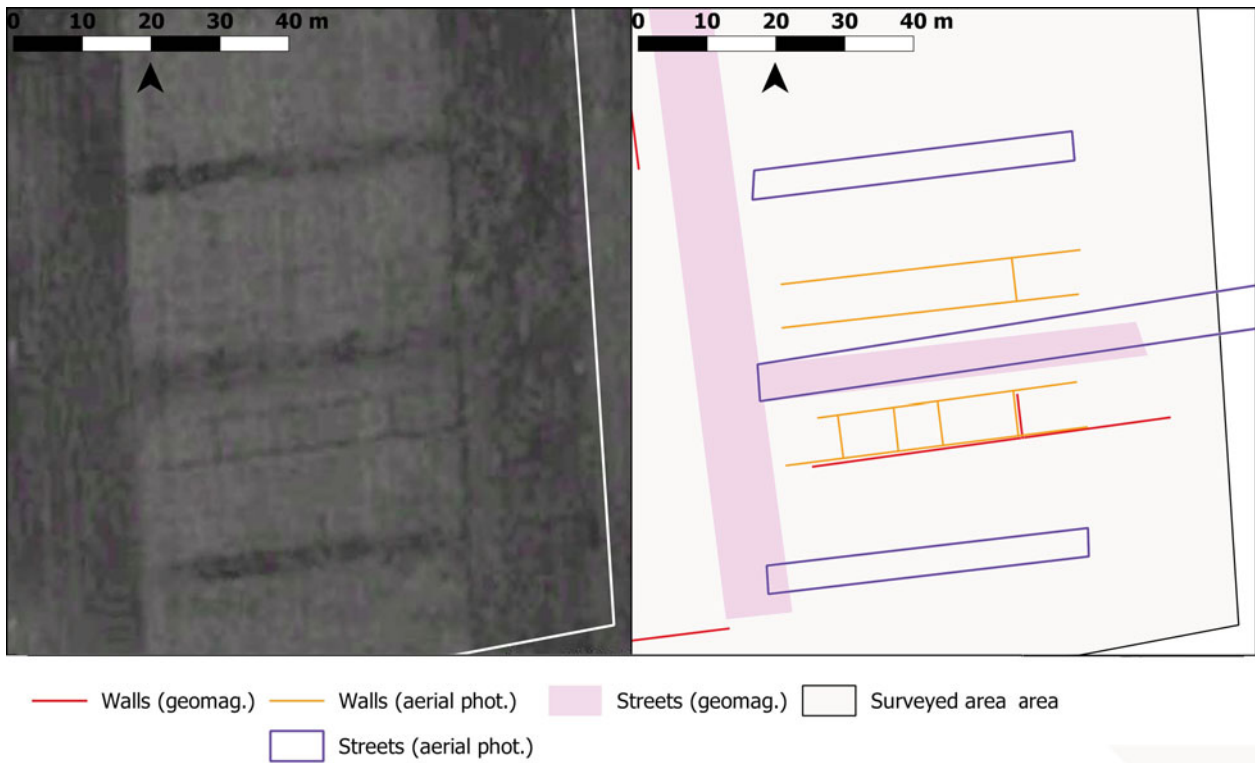
²Institut für Ur- und Frühgeschichte, Friedrich-Alexander-Universität Erlangen-Nürnberg <carstenmischka@gmail.com>



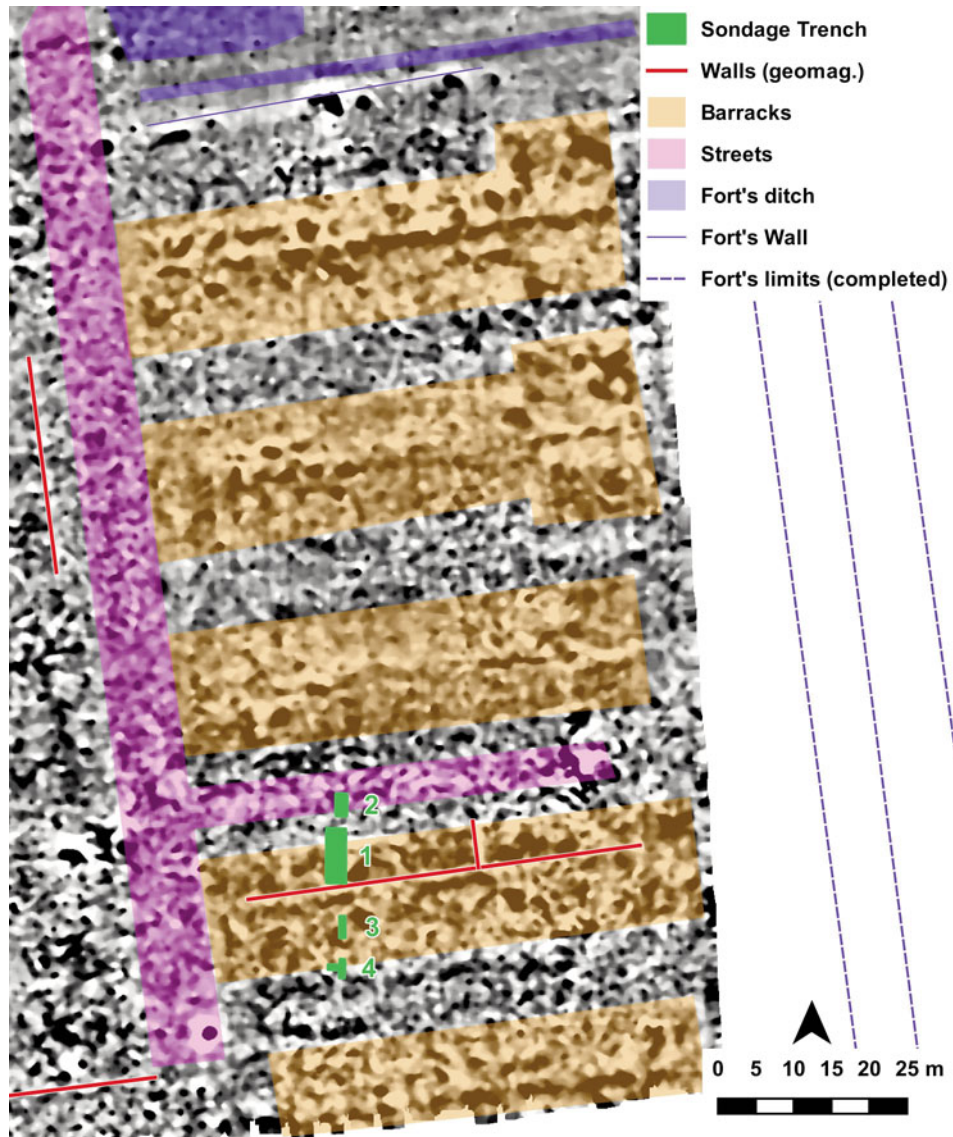
Enhanced color version of Fig. 2. Războieni-Cetate: topographical setting, surveyed areas, and comprehensive archaeological structures. (Data source: Jarvis et al. 2008; map data © OpenStreetMap contributors: <https://www.openstreetmap.org>; illustration by C. Mischka).



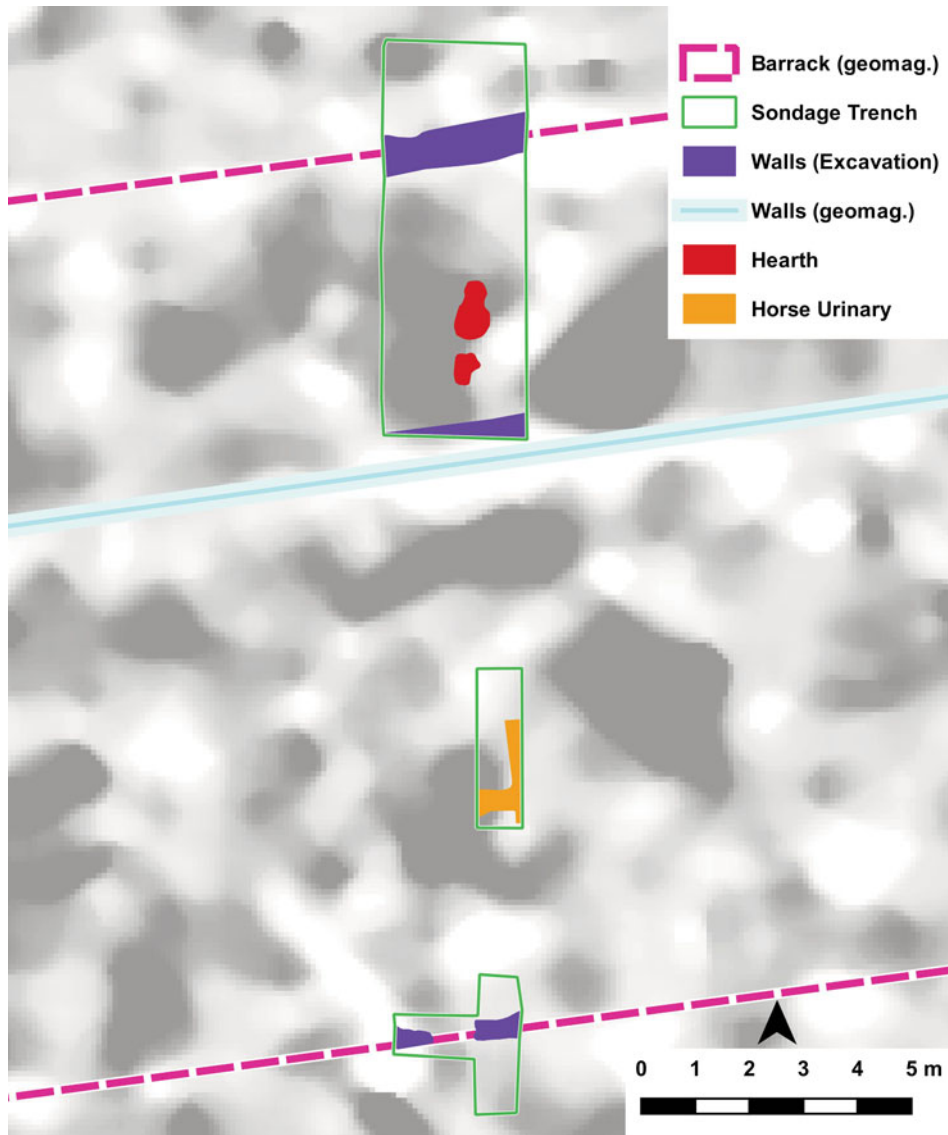
Enhanced color version of Fig. 5. Războieni-Cetate: magnetogram with reconstruction of the barracks' interior layout. (Illustration by C. Mischka.)



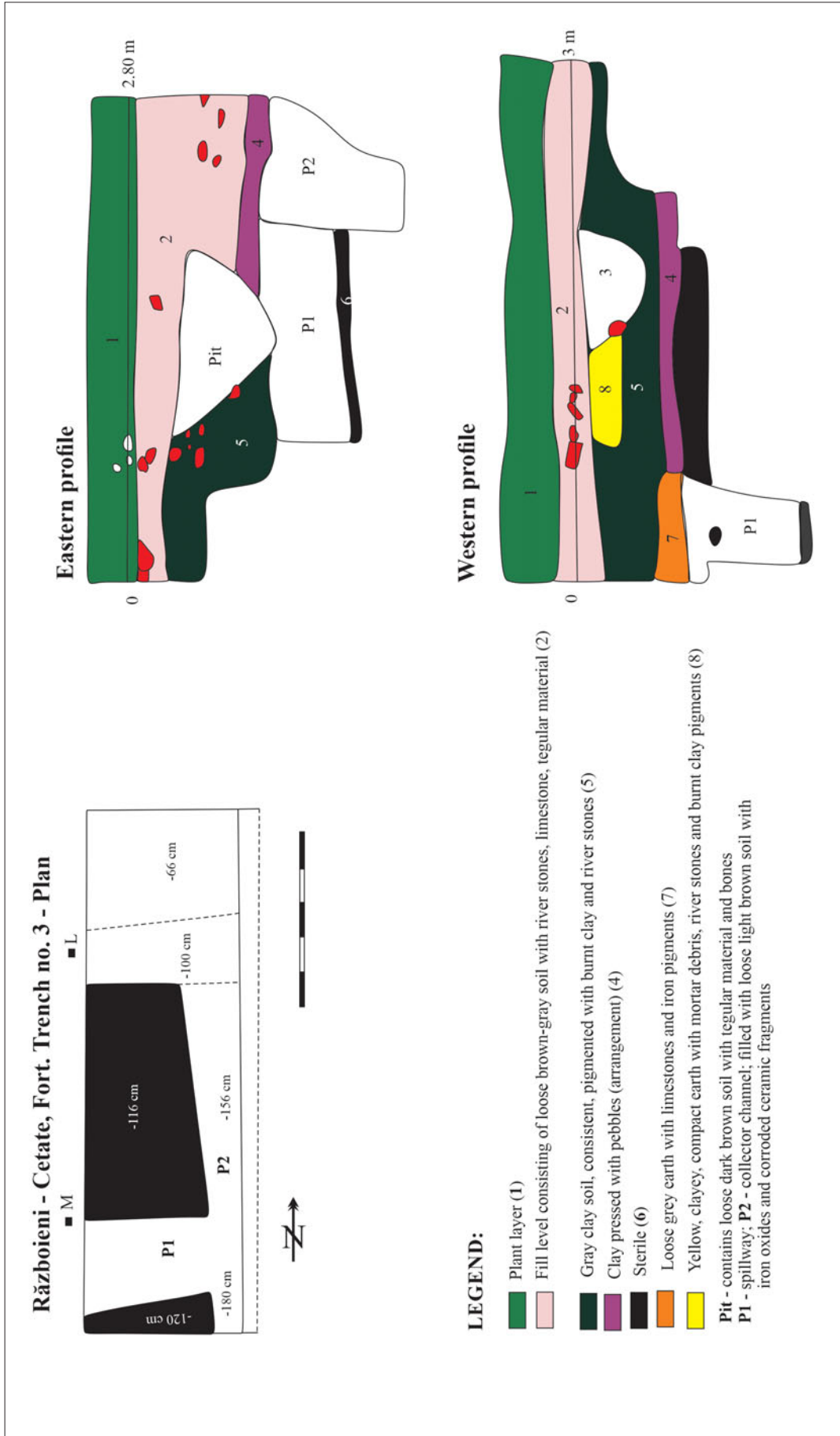
Enhanced color version of Fig. 6. Războieni-Cetate: aerial photographs (left) and combined structures from geomagnetic survey and aerial photography (right). (Aerial photographs: Google Earth Pro V 7.3.2.5491 (26 May 2011). Războieni-Cetate, Romania. 34TGS197784908. Altitude: 1.3km CNES/Airbus 2018. <http://www.earth.google.com> [11.09.2018]; illustration by C. Mischka.)



Enhanced color version of Fig. 8. Războieni-Cetate: detail of the magnetogram with archaeological interpretation including marked location of the 2018 sondage trenches. (Illustration by C. Mischka.)



Enhanced color version of Fig. 9. *Războieni-Cetate: archaeological structures from the 2018 sondage trenches, indicating fireplaces of the two timber phases in the papilio. (Illustration by C. Mischka.)*



Enhanced color version of Fig. 11. Războieni-Cetate: The urine pit of the stable marked by a multi-stage drainage system with collection channels. (Illustration by L. Grumeza.)