

Figure S1: Mean repeated accessibility (left) \pm standard deviation (right) (in %) in the WSMPA planning area within a three-year period shown per austral winter and spring month (mean values over the years 2002 to 2020).

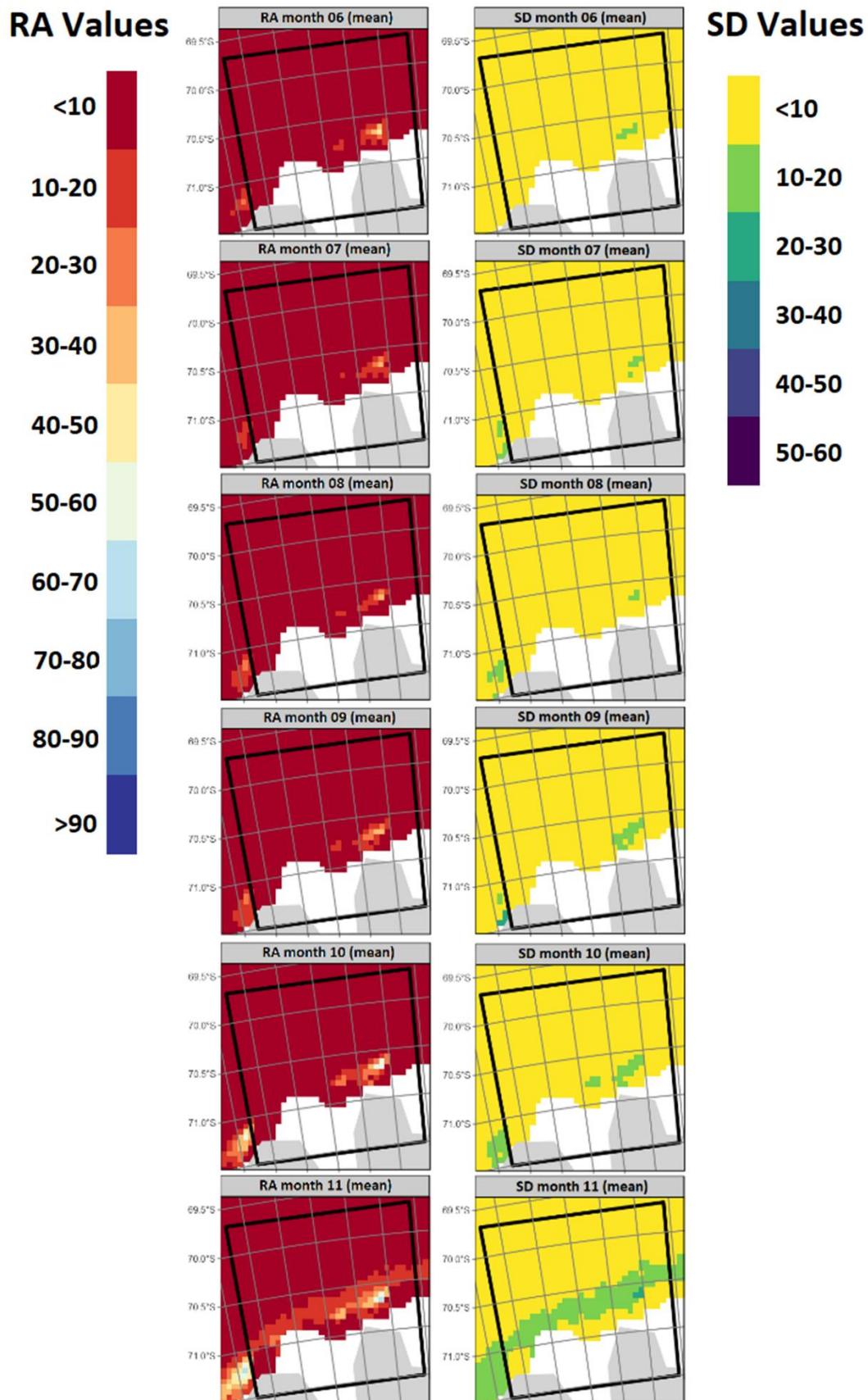


Figure S2: Mean repeated accessibility (left) \pm standard deviation (right) (in %) in Atka Bay within a three-year period shown per austral winter and spring month (mean values over the years 2002 to 2020).