

## A lithostratigraphical and chronological study of Oligocene—Miocene sequences on eastern King George Island, South Shetland Islands (Antarctica) and correlation of glacial episodes with global isotope events

Smellie, J.L.<sup>1\*</sup>, McIntosh, W.C.<sup>2</sup>, Whittle, R.<sup>3</sup>, Troedson, A.<sup>3,4</sup> and Hunt, R.J.<sup>5,6</sup>

<sup>1</sup> School of Geography, Geology & the Environment, University of Leicester, Leicester LE1 7RH, UK; \*corresponding author: [jls55@le.ac.uk]

<sup>2</sup> New Mexico Bureau of Geology and Mineral Resources, New Mexico Tech, Socorro, NM, 87801, USA; [mcintosh@nmt.edu]

<sup>3</sup> British Antarctic Survey, Cambridge CBE OET, UK; [roit@bas.ac.uk]

<sup>4</sup> Troedson Geosciences Consulting, Australia; [consulting@troedson.com.au]

<sup>5</sup> School of Earth Sciences, University of Leeds, Woodhouse Lane, Leeds, LS2 9JT [rjh138@icloud.com]

### Supplementary Information file S1 – exposure maps for each of the areas studied on King George Island

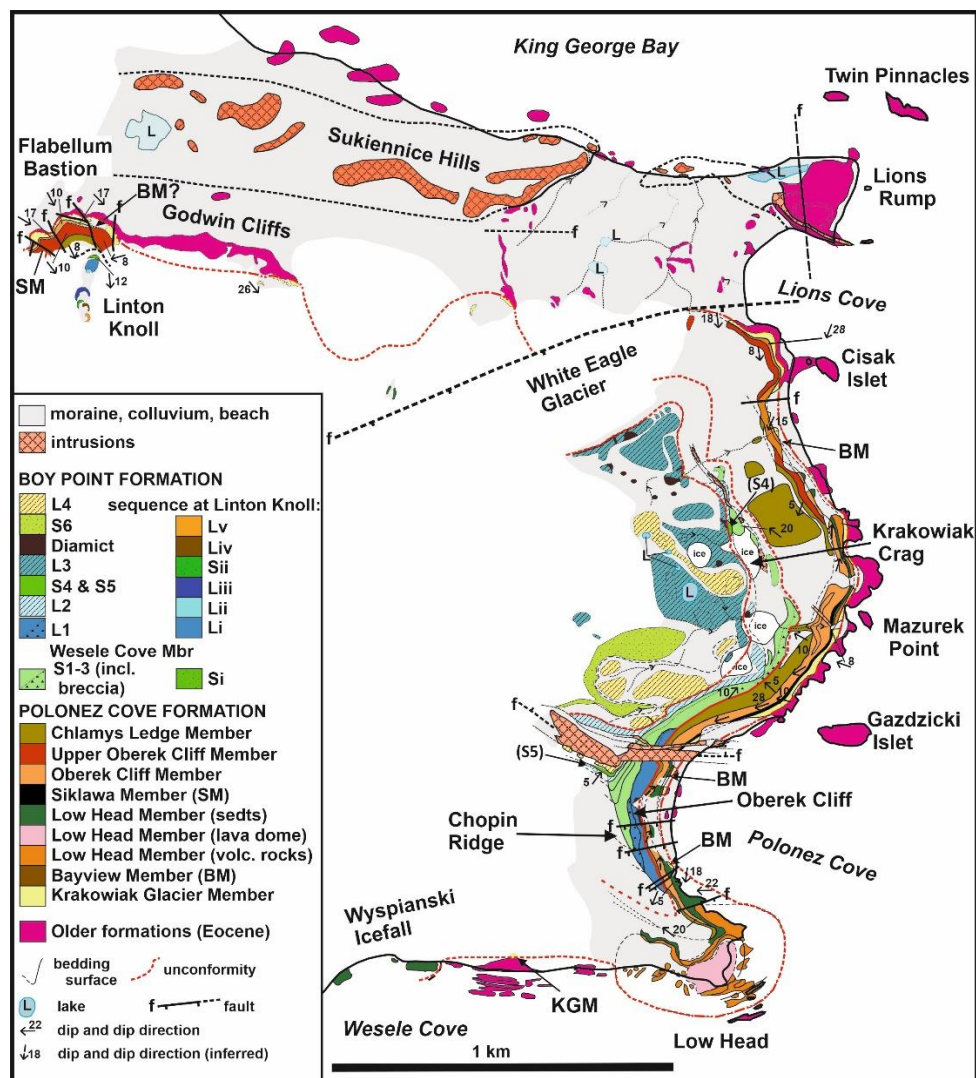


Fig. S1-1. Lions Rump—Low Head & Godwin Cliffs.

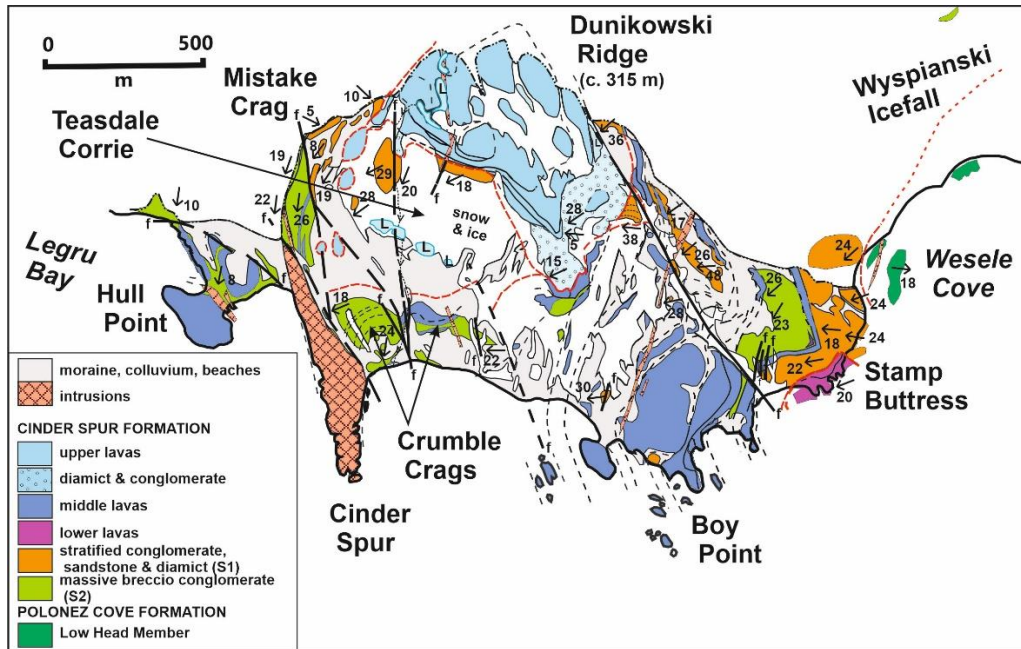


Fig. S1-2. Cinder Spur.

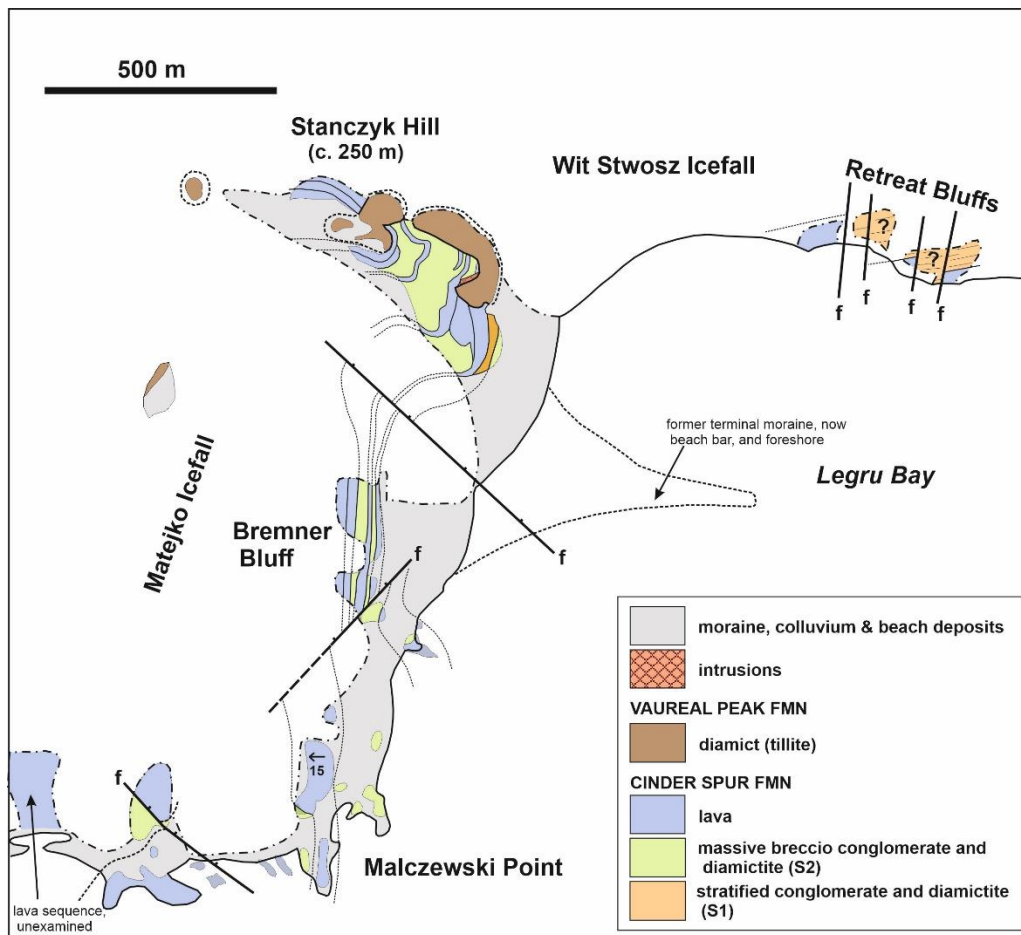


Figure S1-3. Stanczyk Hill—Malczewski Point.

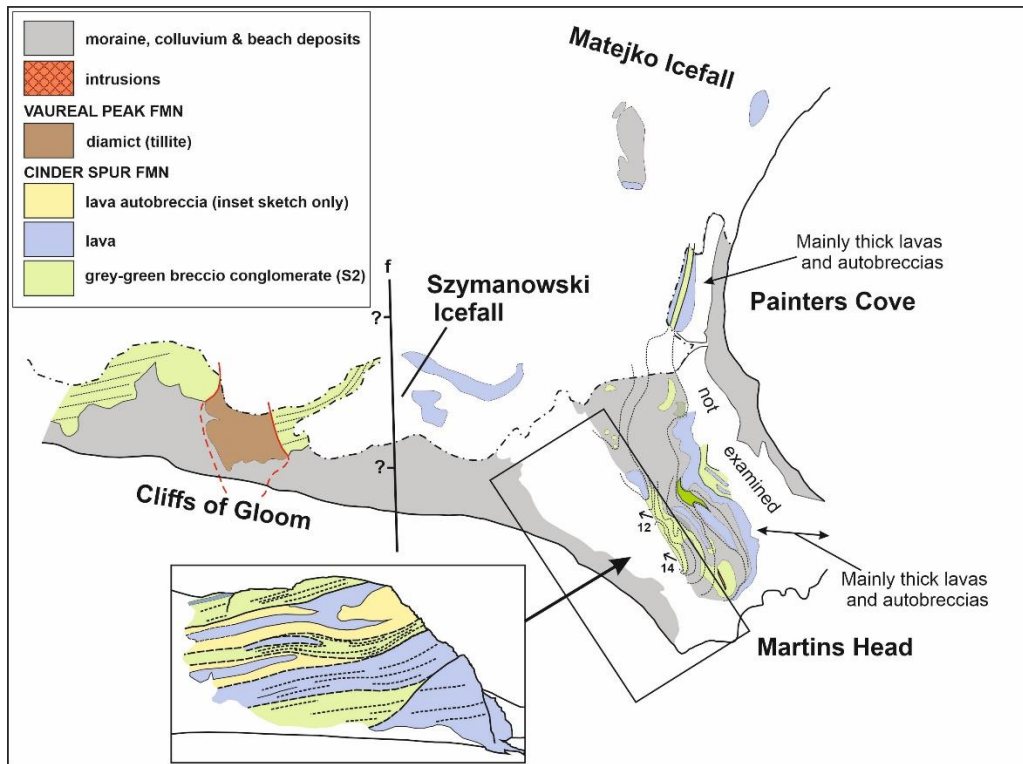


Figure S1-4. Martins Head.

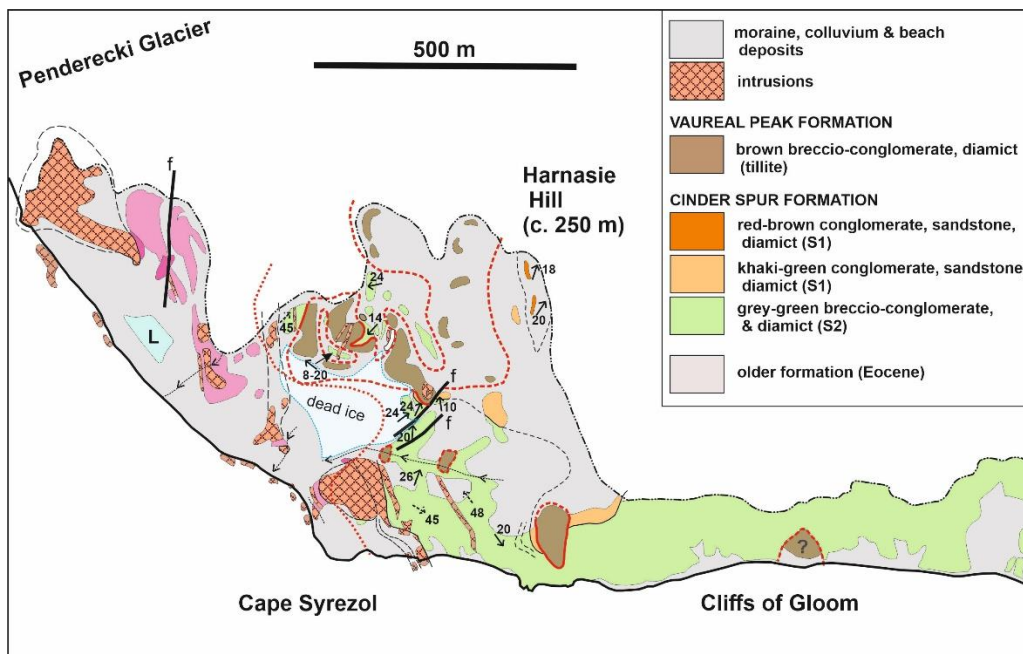


Figure. S1-5. Harnasie Hill.

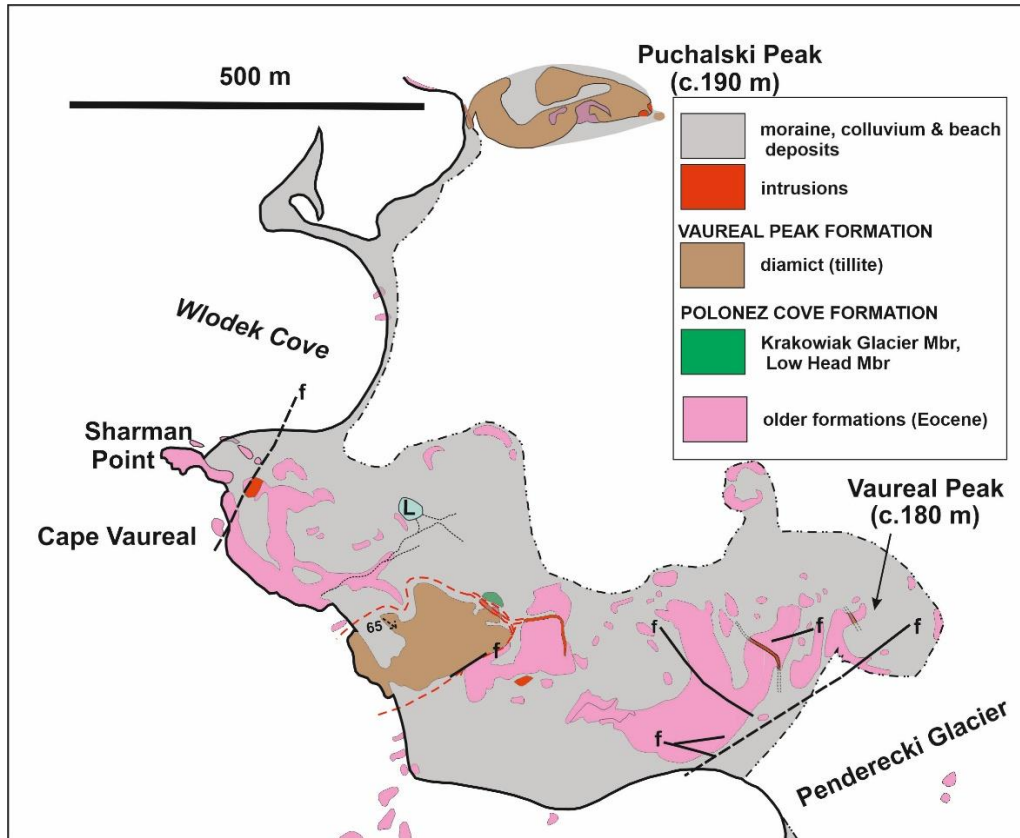


Figure S1-6. Vauréal Peak—Puchalski Peak area.