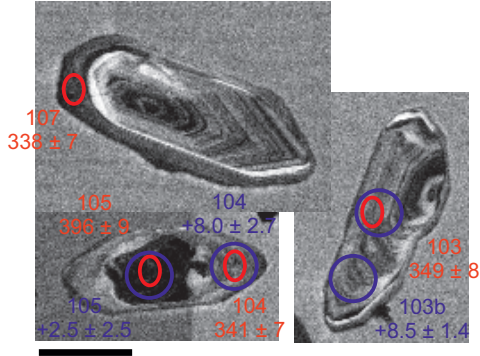
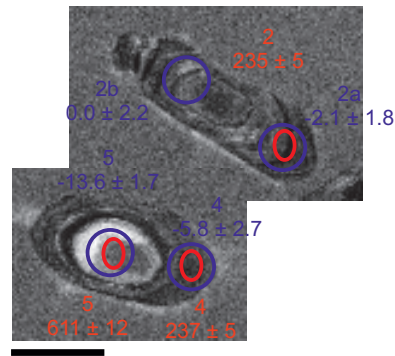


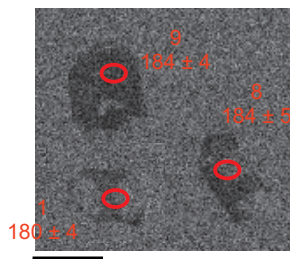
a) Morgan Inlet gneiss
R.3035.3



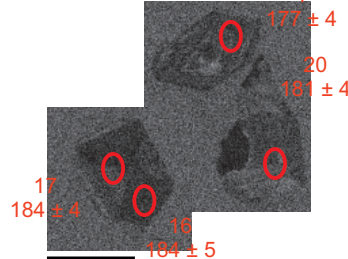
b) Mount Bramhall diorite
R.3031.1



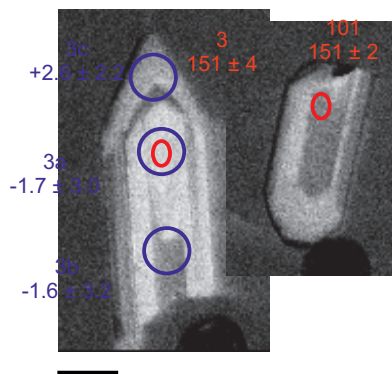
c) Mount Dowling crystal tuff
R.3029.3



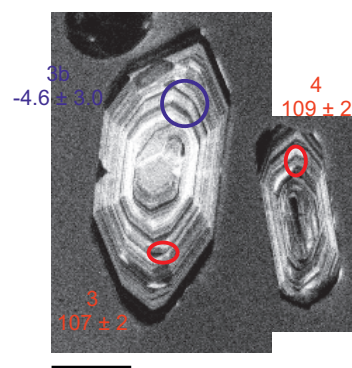
d) Mount Dowling lithic tuff
R.3029.1



e) Hale Glacier
R.3025.3



f) Lepley Nunatak
R.3032.4



Supplementary Figure 1. Representative CL images of analysed zircons showing the location of U-Pb (red) and Hf (blue) analyses. Age and ϵHf_t values are quoted with 2σ uncertainties