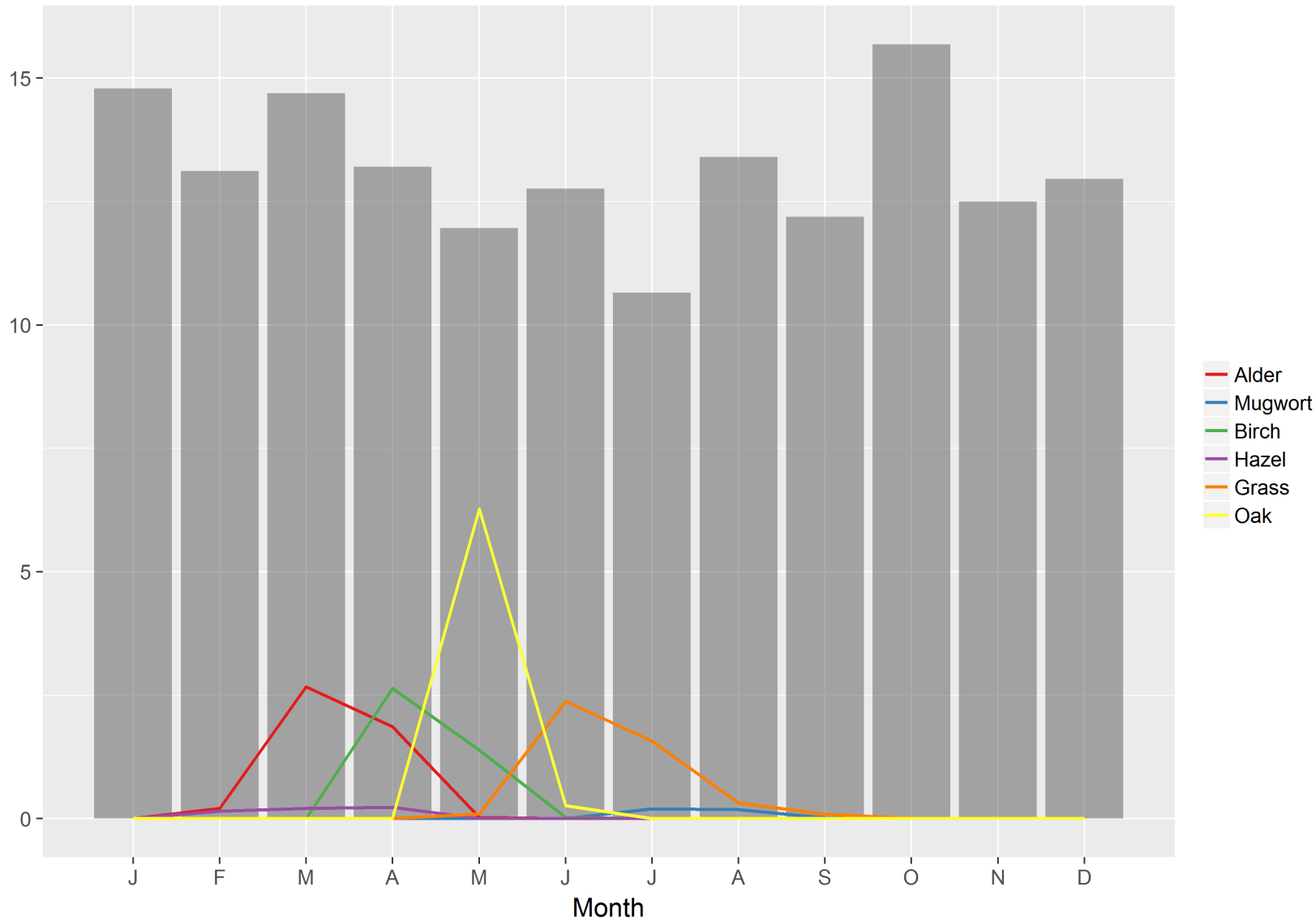


Supplementary Figure 6. Average pollen grains per cubic meter of air in comparison with percentage women with depressive symptoms (EPDS ≥ 12) at 6 weeks postpartum in BASIC, by month of the year (2010–2015, collapsed). The birch values have been divided by 100, the other pollen types by 10.



Bars represent percent of cases (EPDS)