

National Poll for Healthy Aging (NPHA) Wave 2 October 17 Survey Questions

History of influenza (flu) vaccination

Q23: Have you gotten a flu vaccine since July 1, 2017?

-1 Refused

1 Yes

2 Not yet, but I plan to

3 No, and I do not plan to

Knowing someone in a nursing home or assisted living facility

Q18: Do you know anyone who lives in a nursing home or assisted living facility?

-1 Refused

1 Yes

2 No

Attitudes toward requiring influenza vaccination for groups interacting with nursing home and assisted living residents (LCTFs)

Q20: In your opinion, to prevent the spread of influenza (the flu) to residents of nursing homes and assisted living facilities, should flu vaccine be required for any of the following groups?

Statements in row:

- a. Medical staff at the facility
- b. Other staff at the facility (food service, administrators)
- c. Visitors to the facility
- d. Residents of the facility

Responses in column:

1. Definitely require
2. Possibly require
3. Do not require

Support for actions to encourage influenza vaccinations for LTCF Staff.

Q21 : Which of the following actions would you support to encourage flu vaccines for staff at nursing homes and assisted living facilities?

Statements in row:

- a. Mandate that all staff get vaccinated in order to keep their job
- b. Provide vaccine for free, onsite
- c. Bonus pay for staff who get flu vaccine
- d. Do not allow unvaccinated staff to come to work if they are sick
- e. Encourage vaccination, with no pressure

Supplementary Material

Responses in column:

1. Support
2. Do not support

Supplementary Table: Weighted Sample Descriptive Characteristics

	Mean or % (95% CI)
Age (n=2,007)	
Mean	62.1 (61.8, 62.5)
50-64	62.6 (60.4, 64.7)
65-80	37.4 (35.3, 39.7)
Gender (n= 2,007)	
Male	47.5 (45.1, 49.9)
Female	52.5 (50.1, 54.9)
Race/Ethnicity (n=2,007)	
White, non-Hispanic	71.8 (69.4, 74.0)
Black, non-Hispanic	10.7 (9.2, 12.3)
Hispanic	10.9 (9.4, 12.7)
Other, non-Hispanic	6.6 (5.4, 8.1)
Education (n=2,007)	
Less than HS	10.5 (8.8, 12.4)
High School	31.2 (29.1, 33.5)
Some college	26.7 (24.8, 28.8)
Bachelor's degree	17.1 (15.4, 18.9)
Professional degree	14.4 (12.9, 16.1)
Received flu vaccine since July 1, 2017 (n=2,000)	
No and do not plan to	28.9 (26.8,31.1)
Yes	27.6 (25.2, 29.7)
Not yet, but plan to	43.5 (41.2, 45.9)
Knows anyone in a nursing home or assisted living (n=2,003)	
No	71.8 (69.6, 73.8)
Yes	28.3 (26.3, 30.4)
Political ideology (n=1,927)	
Conservative	40.6 (38.3, 43.0)
Moderate	35.0 (32.7, 37.4)
Liberal	24.4 (22.4, 26.6)
US Census region (n=2,007)	
South	37.9 (35.6, 40.3)
Northeast	18.2 (16.5, 20.0)
Midwest	21.3 (19.5, 23.3)
West	22.7 (20.7, 24.7)
Urbanicity (n=2,005)	
Urban	31.9 (29.7, 34.2)
Rural	19.3 (17.6, 21.3)
Suburban	48.8 (46.4, 51.1)
Chronic conditions (n=2,007)	
0 to 1	52.3 (50.0, 54.7)
2 or 3	32.6 (30.5, 34.8)
4 or more	15.1 (13.4, 16.8)



Flu Vaccine for Nursing Home Staff and Residents

Older adults are at increased risk of complications from influenza (flu), and many older Americans live in nursing homes or assisted living facilities. Although annual flu vaccination is recommended for older adults as well as for all health care personnel, vaccination policies are inconsistent across health care settings including nursing homes. In October 2017, we asked a national sample of adults age 50–80 about vaccination requirements for nursing homes and assisted living facilities (referred to here as nursing homes).

Most older adults indicated that nursing homes should *definitely* require flu vaccine for medical staff (73%) and non-medical staff (71%), or *possibly* require flu vaccine (18% medical and 20% non-medical staff). Less than ten percent felt nursing homes should not require flu vaccine for medical (9%) or non-medical staff (9%).

In comparison, 61% of respondents indicated that nursing homes should *definitely* require flu vaccine for residents, while 27% felt they *possibly* should require and 12% felt they should not require flu vaccine for residents.

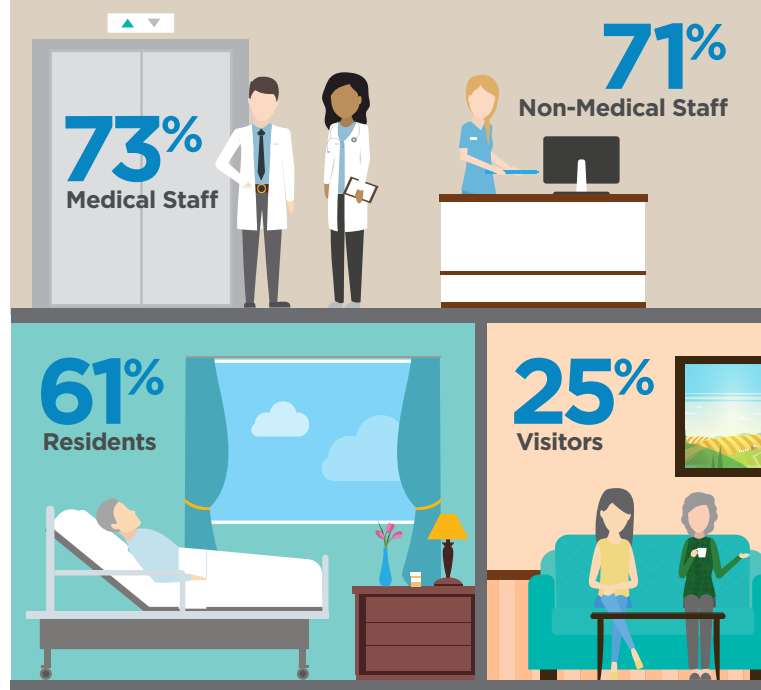
Only 25% of older adults indicated that nursing homes should *definitely* require flu vaccine for visitors to the facility, while 45% felt they *possibly* should require and 30% felt they should not require flu vaccine for visitors.

Older adults had varying levels of support for different strategies to promote flu vaccination among staff of nursing homes. The strongest support was for providing flu vaccine to staff for free, onsite at the facility (93% support). Most respondents said they would support a policy to not allow unvaccinated staff to come to work if they were sick (82% support). There was less support for mandating that all staff get flu vaccine in order to keep their job (55% support) or giving bonus pay to staff who get flu vaccine (47% support).



Flu Vaccine Requirements for Nursing Homes

Percentage of adults age 50–80 who reported flu vaccine should be “definitely required” for various groups



Sponsored by



Directed by



Given a scenario where 1 in 3 staff at a nursing home do not get flu vaccine, 40% of respondents said that this information would make them much less likely to choose that facility for themselves or a family member, while 30% said the information would make them slightly less likely to choose the facility; 30% said it would not affect their decision.

Implications

With many vulnerable persons living in close proximity, nursing homes are common settings for the spread of influenza. Annual flu vaccination is recommended to protect individuals, as well as prevent an outbreak of influenza. Flu vaccine requirements for healthcare workers have become commonplace in many acute care hospitals, and vaccination rates are tracked for health care facilities that serve the Medicare population. In contrast, flu vaccine requirements are less common in nursing homes.

Results of this poll indicate strong support for policies that would require flu vaccination for medical staff in nursing homes. Such requirements would protect residents, and protect the medical staff themselves.

There also was strong support for requiring flu vaccination for non-medical staff in nursing homes. A broad staff requirement that includes both medical and non-medical personnel may reflect the reality that nursing home residents have consistent contact with food service, housekeeping, maintenance and other staff.

To encourage vaccination among staff at nursing homes, nearly all respondents to this poll strongly supported efforts to make the flu vaccine free to staff and available onsite — thereby eliminating logistical barriers to vaccination. Nearly half of

respondents supported direct incentives, like giving bonus pay to staff who get vaccinated.

Respondents were nuanced in how a flu vaccine requirement might impact staff employment. Although 82% of respondents would endorse a policy to not allow unvaccinated staff to come to work if they were sick, only 54% would support a mandate that all staff get flu vaccine in order to keep their job. This finding suggests that respondents understand the risk of an unvaccinated staff member to the vulnerable nursing home population, but are not quite comfortable with the concept that someone who chooses not to be vaccinated should lose their job.

Four in ten respondents to this poll indicated that information about low levels of flu vaccination among staff would make them much less likely to choose a particular nursing home facility for themselves or a family member. Typically, information about the flu vaccination rate for a particular nursing home is not publicly available. However, given the potential risk of influenza transmission, this may be an area of inquiry for those who are considering different facilities.

Low level of support for requiring visitors to have flu vaccine may reflect difficult logistics. For example, it may be hard to convey the information to all friends and family members, especially those who may visit occasionally or unexpectedly. This type of policy might interfere with residents' ability to see family and friends. In addition, this type of requirement would be difficult to enforce. Individuals who expect to visit a friend or family member in a nursing home or assisted living facility should make a point of getting annual flu vaccination at least two weeks before visiting, to protect themselves as well as residents.

Data Source and Methods

This National Poll on Healthy Aging report presents findings from a nationally representative household survey conducted exclusively by GfK Custom Research, LLC (GfK), for the University of Michigan's Institute for Healthcare Policy and Innovation. National Poll on Healthy Aging surveys are conducted using GfK's KnowledgePanel®, the largest national, probability-based panel in the U.S. Surveys are fielded two to three times a year with a sample of approximately 2,000 KnowledgePanel® members age 50–80.

This survey was administered online in October 2017 to a randomly selected, stratified group of older adults age 50–80 (n=2007). Respondents were selected from GfK's web-enabled KnowledgePanel® which closely resembles the U.S. population. The sample was subsequently weighted to reflect population figures from the U.S. Census Bureau.

The completion rate was 73% among panel members contacted to participate. The margin of error is ±1 to 2 percentage points for all outcomes included in this report.

Findings from the National Poll on Healthy Aging do not represent the opinions of the University of Michigan. The University of Michigan reserves all rights over this material.

National Poll on Healthy Aging Team

Preeti Malani, MD, MSJ, MS
Director

Dianne Singer, MPH
Production Manager

Sarah Clark, MPH
Associate Director

Matthias Kirch, MS
Data Analyst

Erica Solway, PhD, MPH, MSW
Associate Director

The Regents of the University of Michigan

Michael J. Behm, Grand Blanc
Mark J. Bernstein, Ann Arbor
Shauna Ryder Diggs, Grosse Pointe
Denise Ilitch, Bingham Farms
Andrea Fischer Newman, Ann Arbor
Andrew C. Richner, Grosse Pointe Park
Ron Weiser, Ann Arbor
Katherine E. White, Ann Arbor
Mark S. Schlissel (*ex officio*)

The University of Michigan is a Non-discriminatory, Affirmative Action Employer.

© 2017, The Regents of the University of Michigan

For more information or to receive future reports, visit healthyagingpoll.org