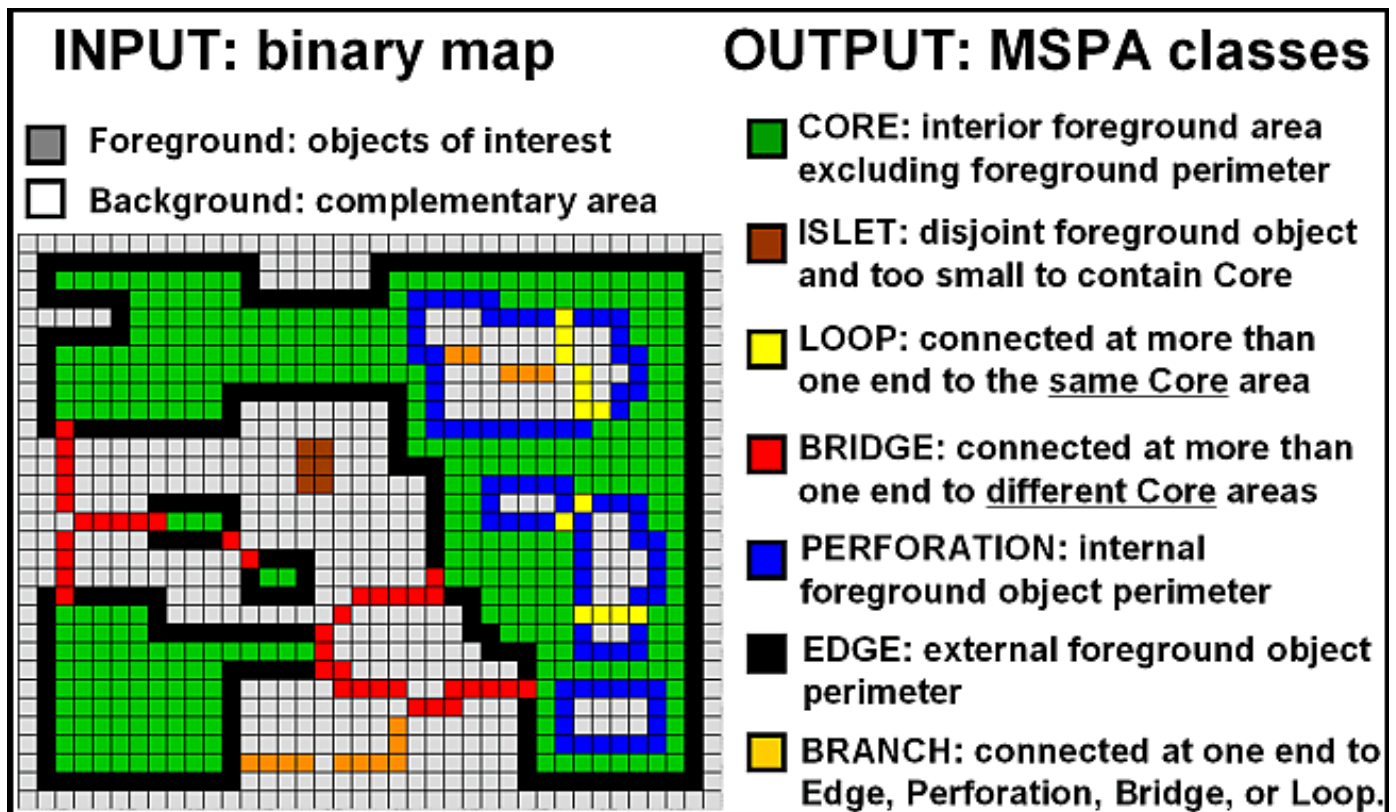


## Appendix S2 - Supporting information for the application of MSPA (Morphological Spatial Pattern Analysis) with an example of results for our study area

Output classes from MSPA (extracted from <http://forest.jrc.ec.europa.eu/download/software/guidos/mspa/>):



### References:

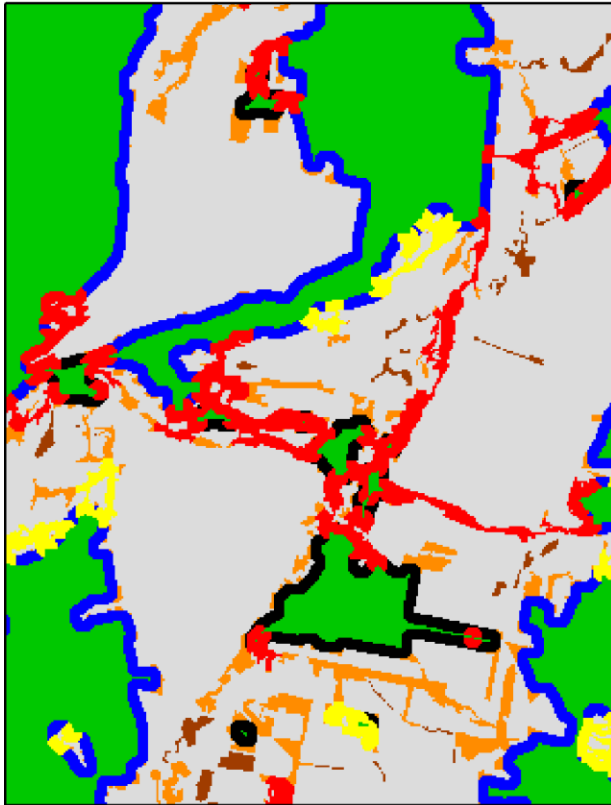
Soille, P., Vogt, P. (2009) Morphological segmentation of binary patterns. *Pattern Recognition Letters* **30**: 456–459.

Vogt, P. (2016) GuidosToolbox (Graphical User Interface for the Description of image Objects and their Shapes). [WWW document]. URL <http://forest.jrc.ec.europa.eu/download/software/guidos>.

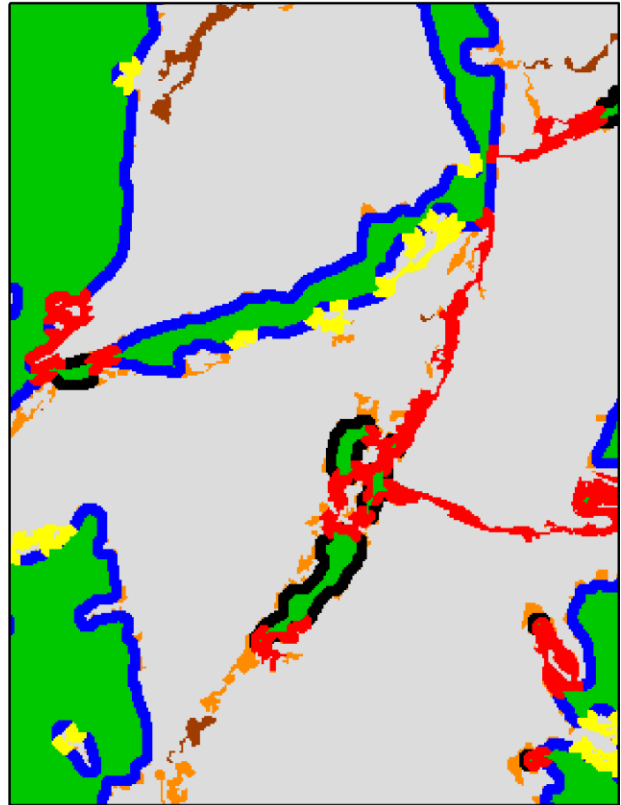
### Results from MSPA in our study area:

The maps below depict a snapshot of the same place, with the low-conservation-value forest included (a) and excluded (b). The area is about 30 by 40 km, located in the center of our study area. The most visible consequences of the conversion of the low-conservation-value forest in this region includes the loss of core forest, particularly in the north (color green); loss of forest bridges, in the center (red); and loss of forest branches in the south (orange). Gray color corresponds to agricultural lands. The MSPA scale parameter was set to 500 m.

(a)



(b)



0 5 10 20 Kilometers

