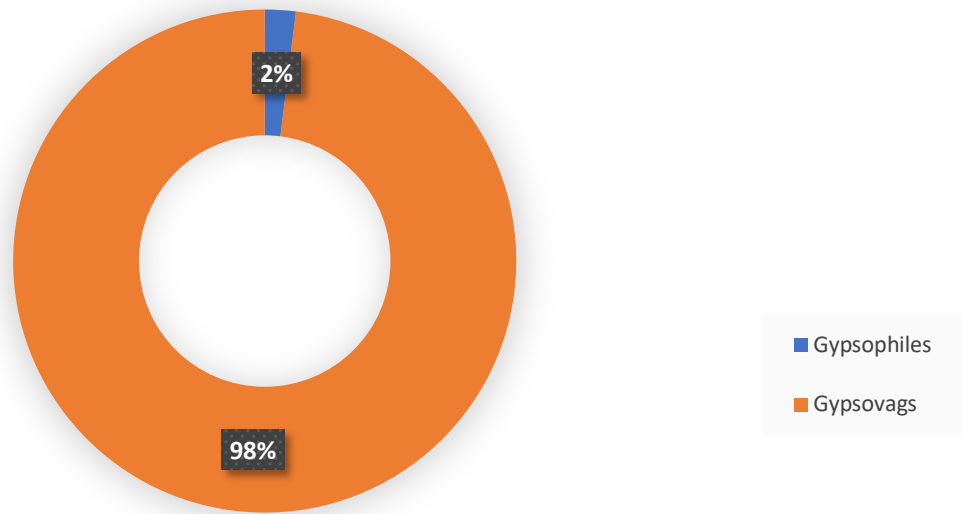
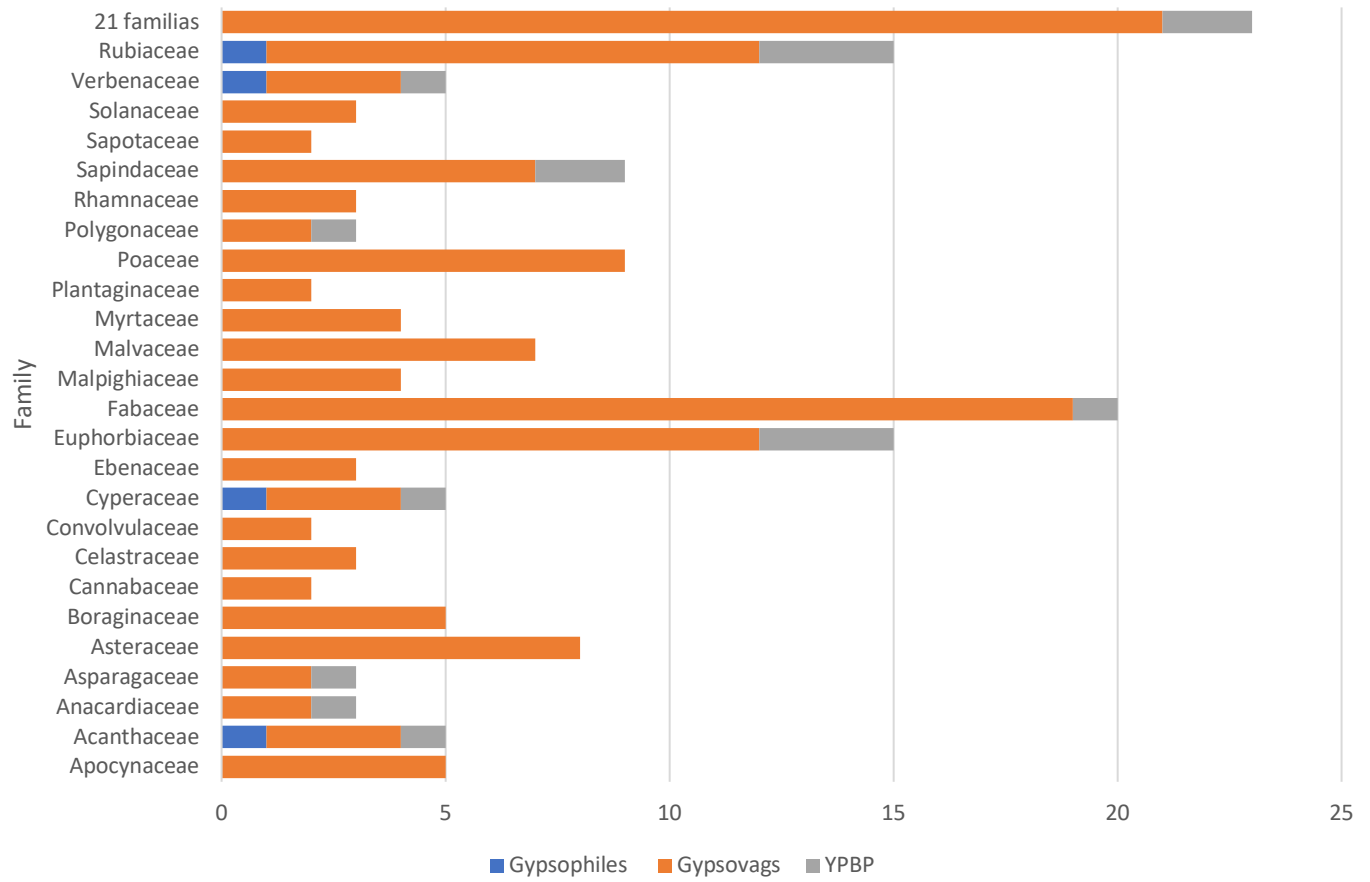


C



D



E

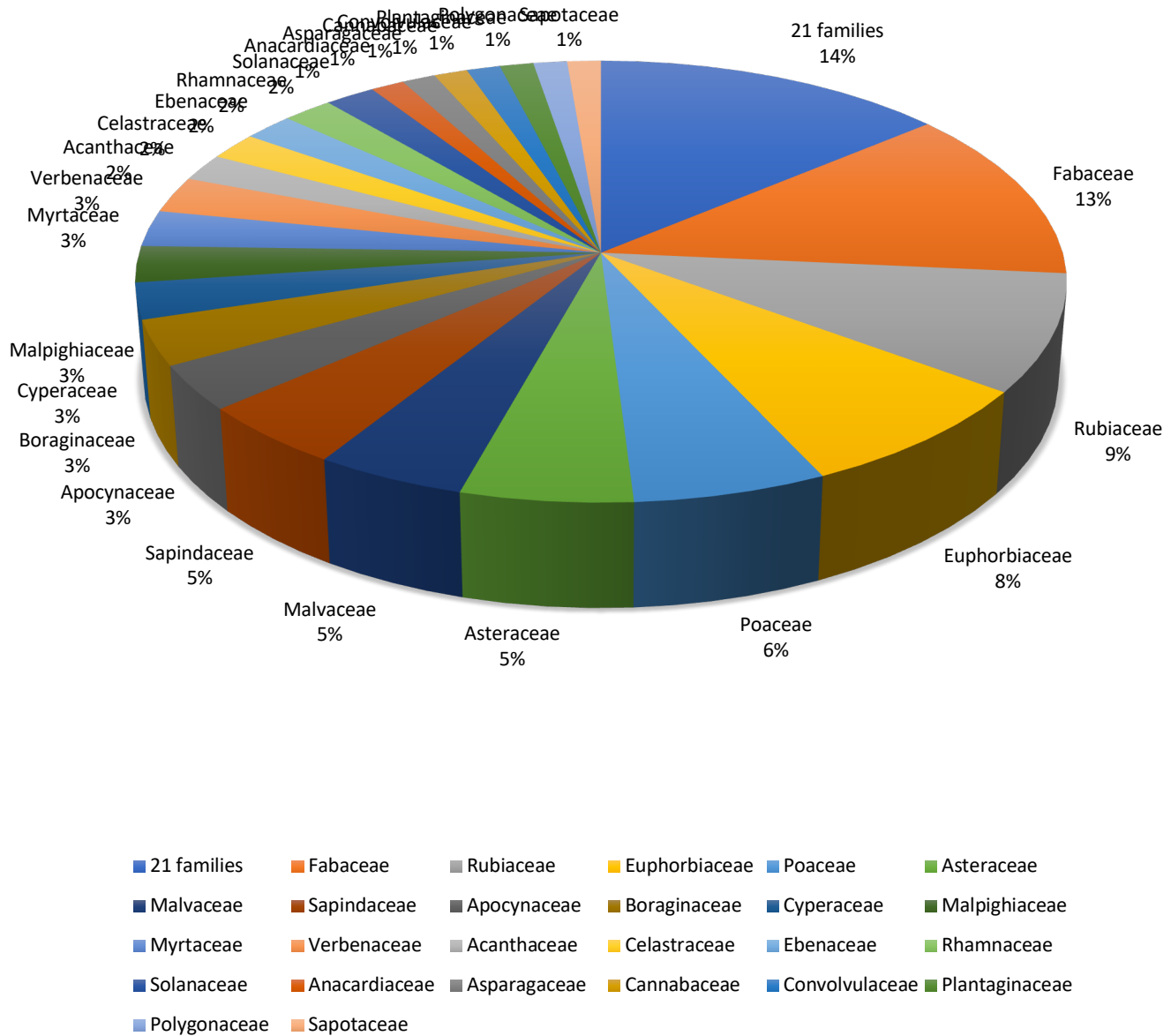


Figure S7. A. The 21 families with at least one species with a gypsum affinity. Fabaceae had the most species represented. **B.** Total number of families by data source (literature, herbarium, and remote sensing), gypsum affinity (gypsophiles vs gypsovags) and endemics in Yucatan Peninsula Biotic Province (YPBP). **C.** Percentage of gypsophiles and gypsovags represented. **D.** Families that have gypsovags, gypsophiles and endemics in YPBP. **E.** Percentage of species by family.