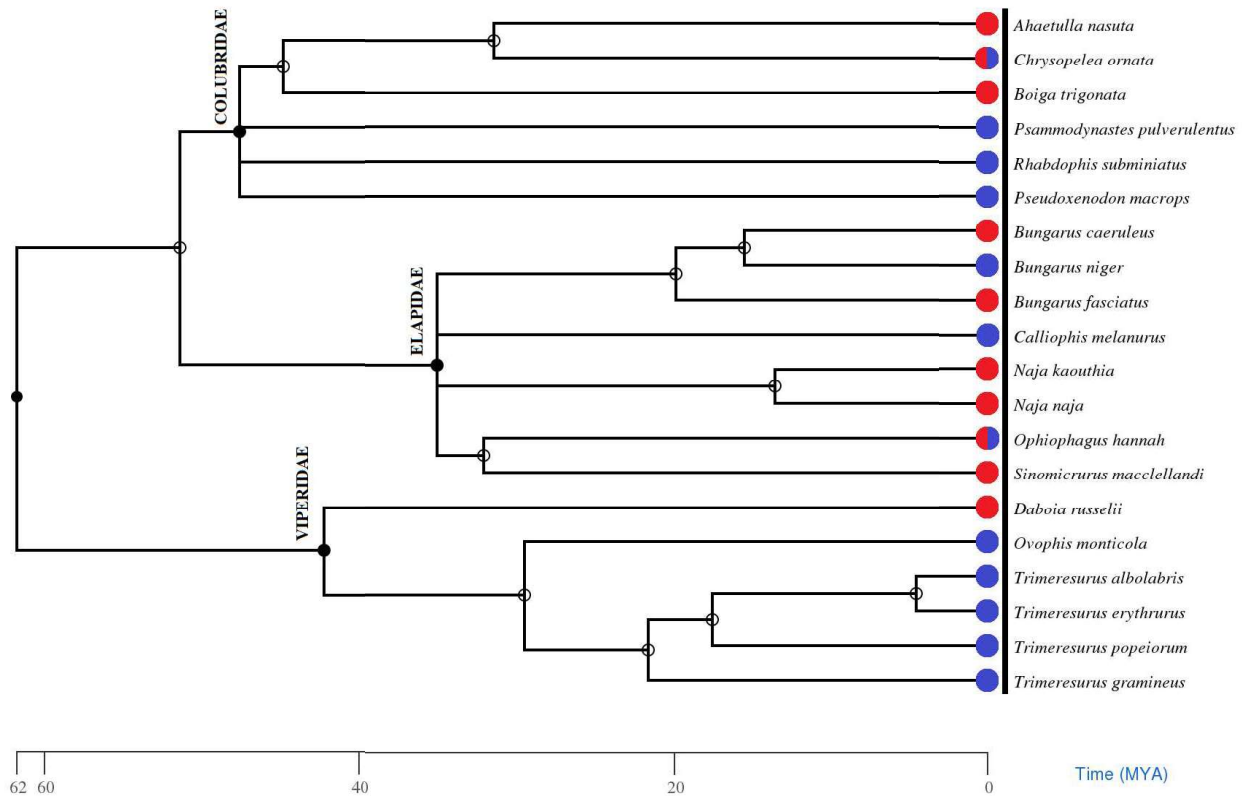


The phylogeny tree was adopted from [www.timetree.org](http://www.timetree.org) to examine the distribution of snakes of three families in two important types of ecosystems in Bangladesh.



Supplementary figure 2: Evolutionary time tree of the venomous snakes of Bangladesh. Blue circles represent snakes adapted to the hilly ecosystem and red circles represent snakes adapted to the village ecosystem. The phylogeny tree was adopted from [www.timetree.org](http://www.timetree.org) to examine the distribution of snakes of three families in two important types of ecosystems in Bangladesh.