

Buried in the Archives: Cemeteries and Mausolea in Tripolitania
 By Nick Ray and Julia Nikolaus
Libyan Studies 50

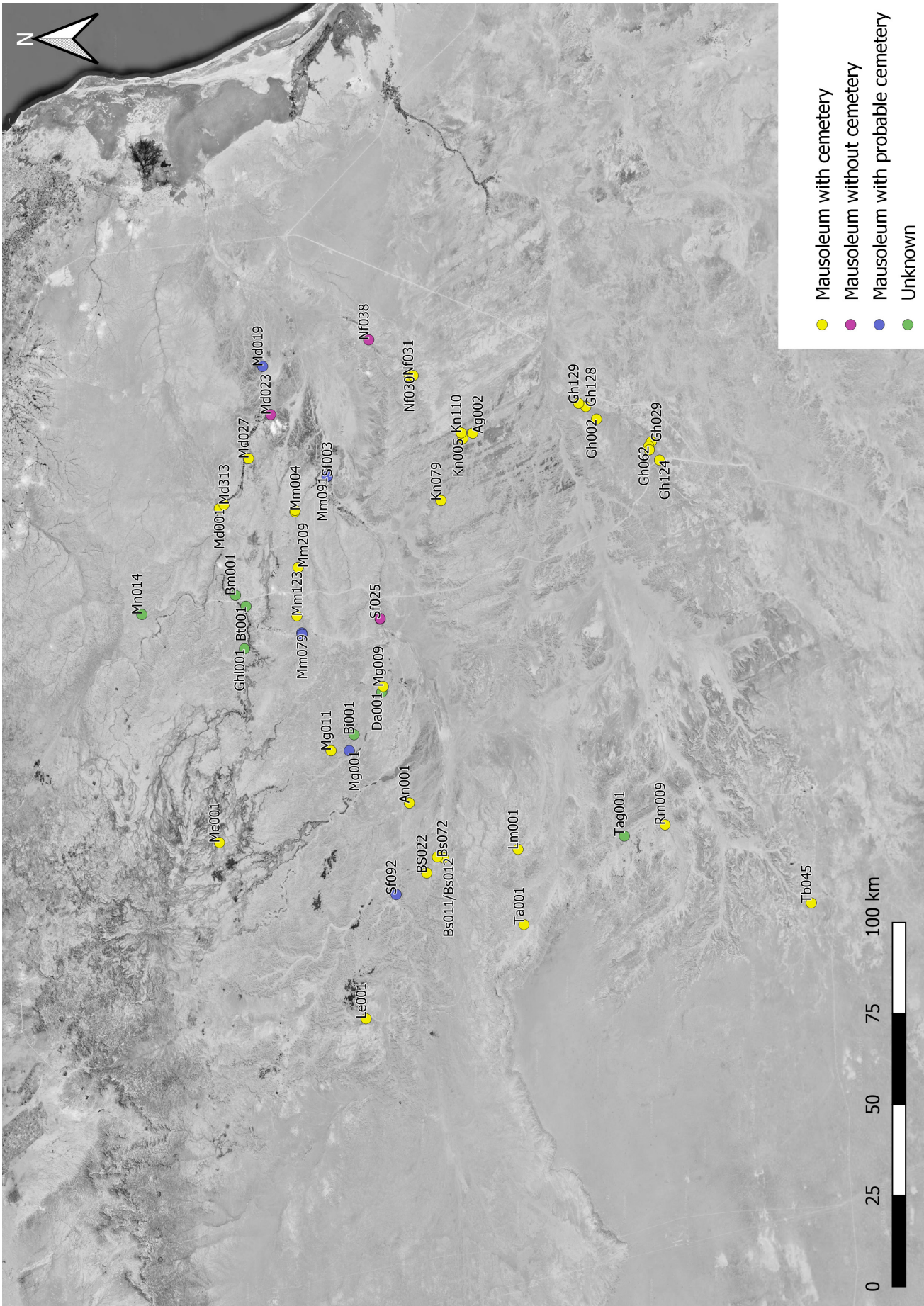


Figure 1: Distribution of mausolea and associated cemeteries in the pre-desert of Tripolitania, Libya (Background ©DigitalGlobe, via Google Earth).

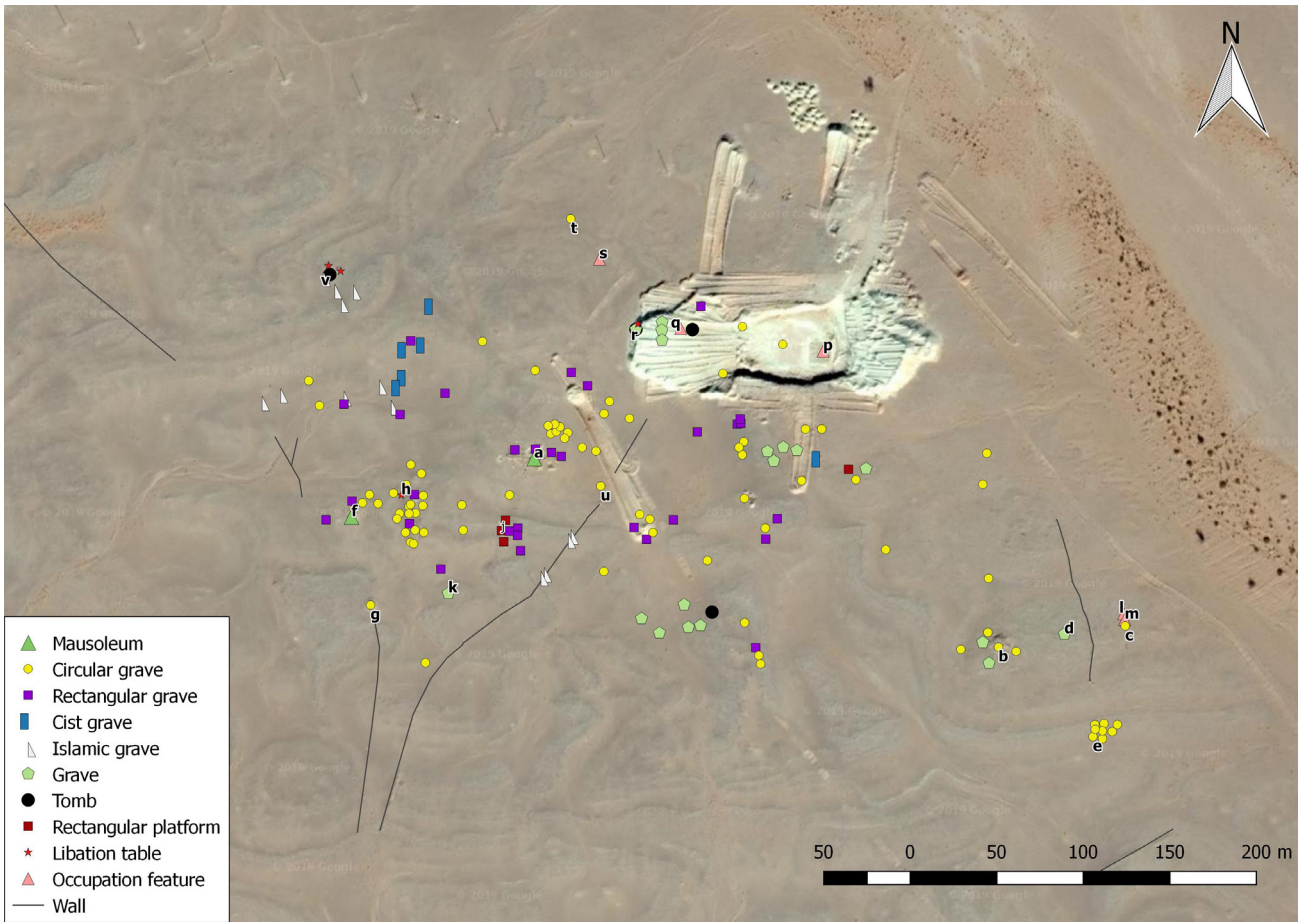


Figure 2: The multi-period cemetery An001 in the Wadi Antar, based on the ULVS records. Letters indicate sub-areas of the site (Background © DigitalGlobe, via Google Earth).

Figure 3: Cemeteries Ag002 and Ag003 in the Wadi Umm el-Agerem, based on the ULVS records (Background © DigitalGlobe, via Google Earth).

