

1         **Higher-order statistical moments to analyze Arctic sea ice drift patterns**

2         **Satwant Kaur,<sup>1</sup> Jennifer V. Lukovich,<sup>1</sup> Jens K. Ehn,<sup>1</sup> and David G. Barber<sup>1</sup>**

3

4         <sup>1</sup>**Centre for Earth Observation Science, University of Manitoba, Winnipeg,**  
5                                 **Manitoba, R3T2N2, Canada**

6

7

8

9         **Corresponding author:**

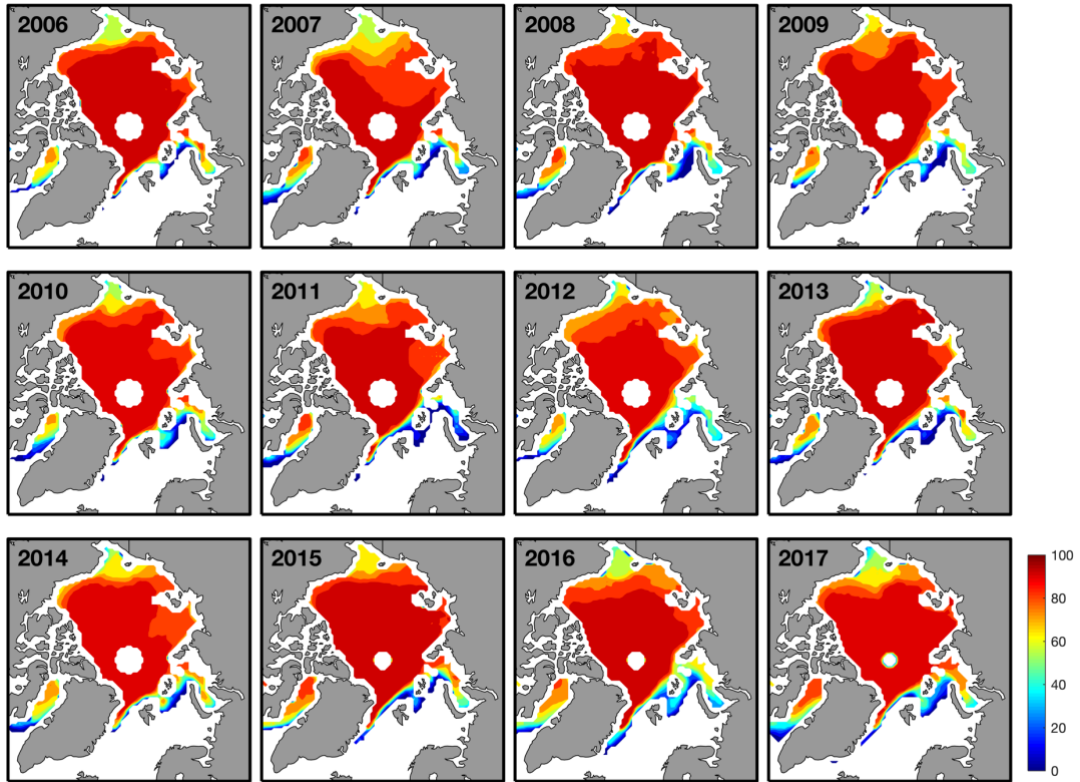
10        Satwant Kaur

11        Centre for Earth Observation Science

12        University of Manitoba

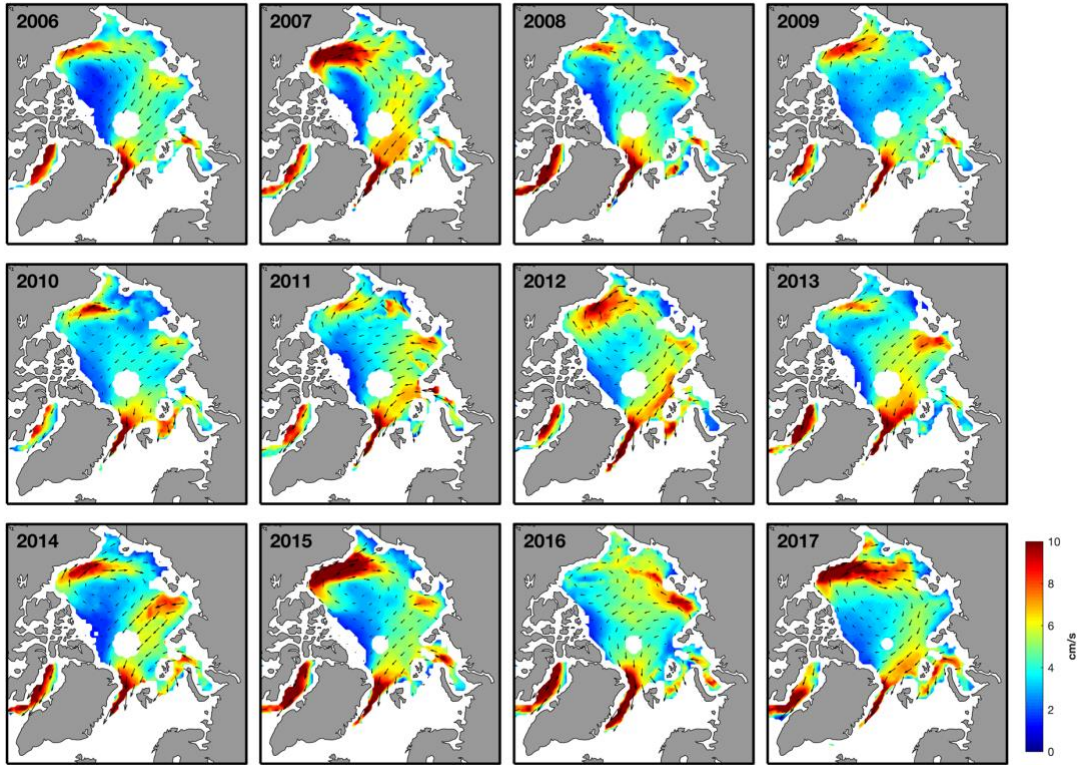
13        Winnipeg, MB. Canada.

14        (kaurs34@myumanitoba.ca)



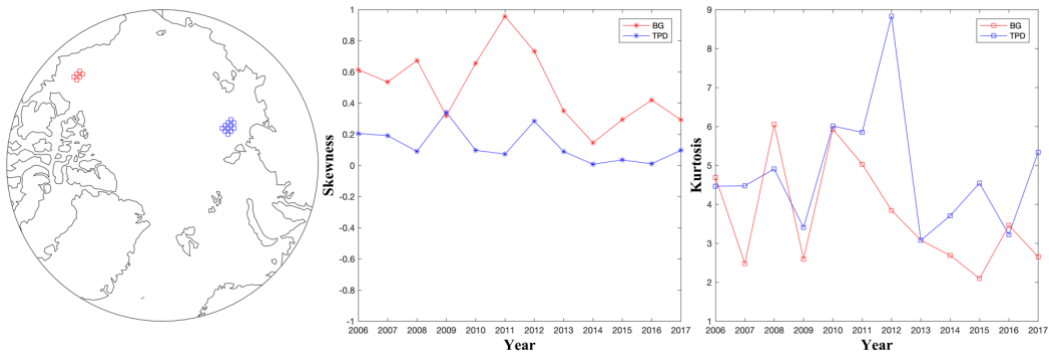
15  
16

Figure S1- Percentage Occupancy for 2006 to 2018

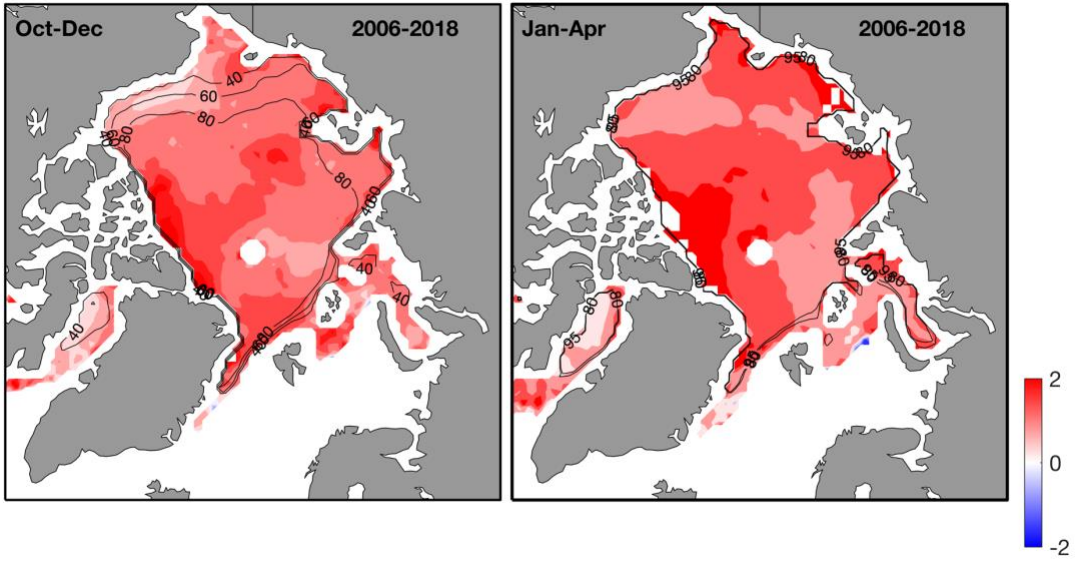


17  
 18 Figure S2 - Mean Sea Ice drift and patterns above 10% OSISAF uncertainty estimates for  
 19 2006-2018

20  
 21

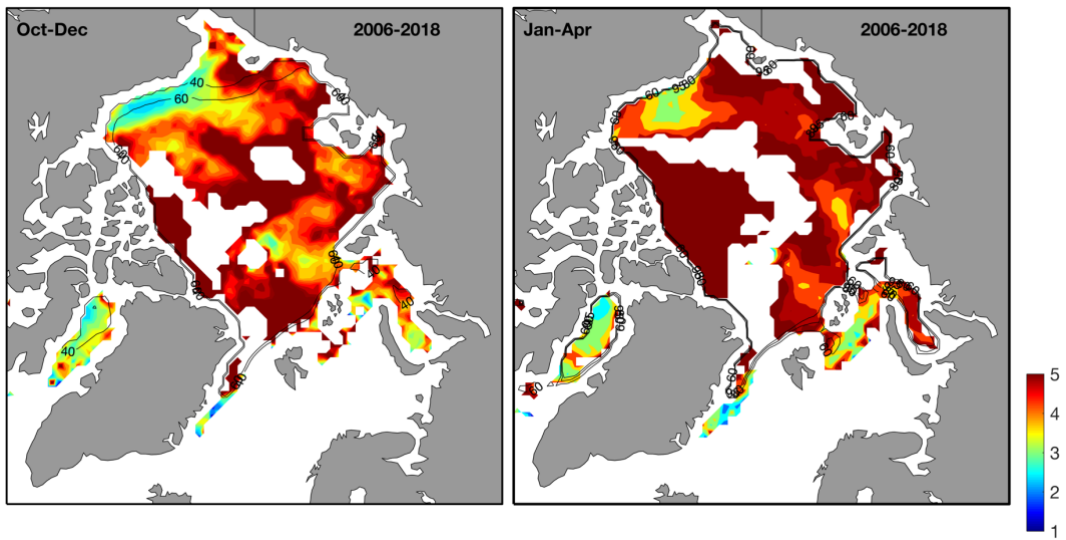


22  
 23 Figure S3 - Time series of skewness and kurtosis in the vicinity of BG and TPD for  
 24 sample years



25  
26

Figure S4 - Skewness on seasonal basis



27  
28  
29

Figure S5 - Kurtosis on seasonal basis