

Online Appendix

Table A1: *Legislative Service Organizations in 1987*

Legislative Service Organization	Formed	Members	Contributions	
			Clerk Hire	Official Allowance
Arms Control and Foreign Policy Caucus	1966	130	✓	✓
Cong. Arts Caucus	1981	230	✓	✓
Cong. Automotive Caucus	1981	38	X	✓
Cong. Black Caucus	1971	23	✓	✓
Cong. Border Caucus	1983	17	X	✓
California Democratic Cong. Delegation	1979	29	✓	✓
Democratic Study Group	1959	235	✓	✓
Environmental and Energy Study Conference	1975	235	✓	✓
Export Task Force	1978	70	✓	✓
Federal Government Service Task Force	1981	50	✓	✓
Cong. Clearinghouse on the Future	1976	100	✓	✓
Cong. Hispanic Caucus	1976	13	✓	✓
Cong. Human Rights Caucus	1983	150	✓	✓
Cong. Long Island Caucus	?	8	X	X
New York State Cong. Delegation	1979	36	✓	✓
Ninety-eighth Democratic Caucus	1983	59	X	X
Northeast-Midwest Cong. Coalition	1976	197	✓	✓
Pennsylvania Cong. Delegation	1979	25	X	✓
Cong. Populist Caucus	1983	29	X	✓
Republican Study Committee	1973	126	✓	✓
Cong. Rural Caucus	1973	110	X	X
Cong. Caucus for Science and Technology	1981	35	✓	✓
Cong. Space Caucus	1981	150	X	X
Cong. Steel Caucus	1977	94	✓	✓
Cong. Sunbelt Caucus	1979	105	✓	✓
Cong. Territorial Caucus	1981	3	✓	✓
Cong. Textile Caucus	1978	83	✓	✓
Cong. Travel and Tourism Caucus	1979	165	✓	✓
House Wednesday Group	1965	38	✓	✓
Cong. Caucus for Women's Issues	1977	120	✓	✓

Table A2: *Former LSO Leaders Dropped in Legislative Effectiveness Rankings*

(Data: 1987-2014)

	Δ in Legislative Effectiveness Ranking		
	(1)	(2)	(3)
Treatment	-64.25***	-26.13**	-85.87**
($\beta_1 < 0$)	(23.6)	(14.29)	(33.13)
Placebo		-2.48	42.22
(β_2)		(12.47)	(31.03)
Committee Chair		120.21***	✓
(β_3)		(10.53)	
Subcommittee Chair		73.21***	✓
(β_4)		(6.32)	
'Power' Committee Member		9.36	✓
(β_5)		(7.07)	
Majority Party member		73.53***	✓
(β_6)		(5.3)	
Constant	372.03***	228.39***	374.92***
	(4.03)	(6.71)	(4.59)
Congress Fixed Effects?	Yes	Yes	Yes
Legislator Fixed Effects?	Yes	Yes	Yes
Coarsened Exact Matching?	No	No	Yes
Observations	6,182	6,181	6,177
R ²	0.43	0.61	0.45

Note: OLS Point Estimates with Standard Errors Clustered by Legislator
(two-tailed tests, except where directional hypothesis is indicated)

*p<0.1; **p<0.05; ***p<0.01

Table A3: *LSO Leaders Became Less Effective Relative to Co-Partisans*

(Difference-in-Difference Analysis with Coarsened Exact Matching)

	Δ in Legislative Effectiveness Ranking (Within Party)		
	(1)	(2)	(3)
Treatment	-27.67***	-15.97**	-38.67***
($\beta_1 < 0$)	(10.85)	(8.46)	(15.07)
Placebo		1.29	20.05
(β_2)		(7.24)	(14.30)
Committee Chair		82.54***	✓
(β_3)		(5.81)	
Subcommittee Chair		44.00***	✓
(β_4)		(3.57)	
'Power' Committee Member		3.83	✓
(β_5)		(3.93)	
Majority Party member		1.61	✓
(β_6)		(2.89)	
Constant	200.31***	156.61***	291.92***
	(2.12)	(3.86)	(2.37)
Congress Fixed Effects?	Yes	Yes	Yes
Legislator Fixed Effects?	Yes	Yes	Yes
Coarsened Exact Matching?	No	No	Yes
Observations	6,182	6,181	6,177
R ²	0.47	0.55	0.46

Note: OLS Point Estimates with Standard Errors Clustered by Legislator
(two-tailed tests, except where directional hypothesis is indicated)

*p<0.1; **p<0.05; ***p<0.01

Figure A1: *Former LSO Leaders Were Less Effective Post-1994*
(Difference-in-Difference Analysis with Coarsened Exact Matching)

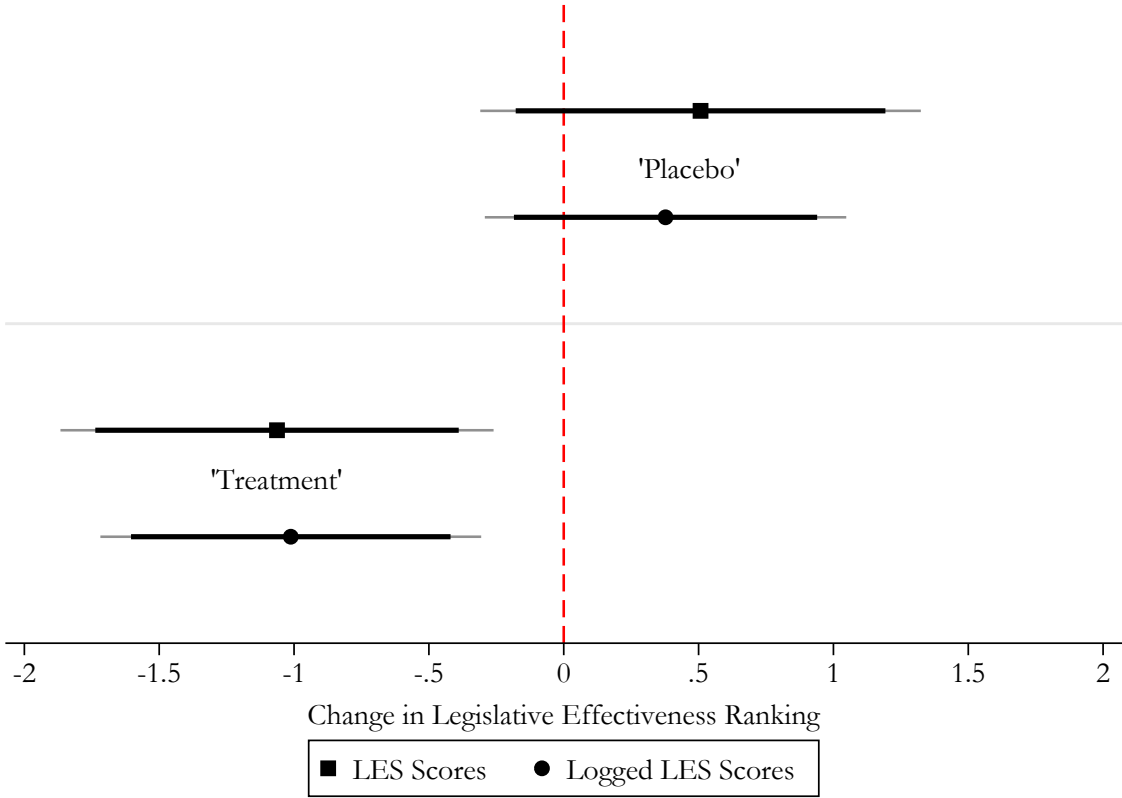


Figure A2: *Former LSO Leaders Became Less Successful Lawmakers*
(Difference-in-Difference Analyses with Coarsened Exact Matching)

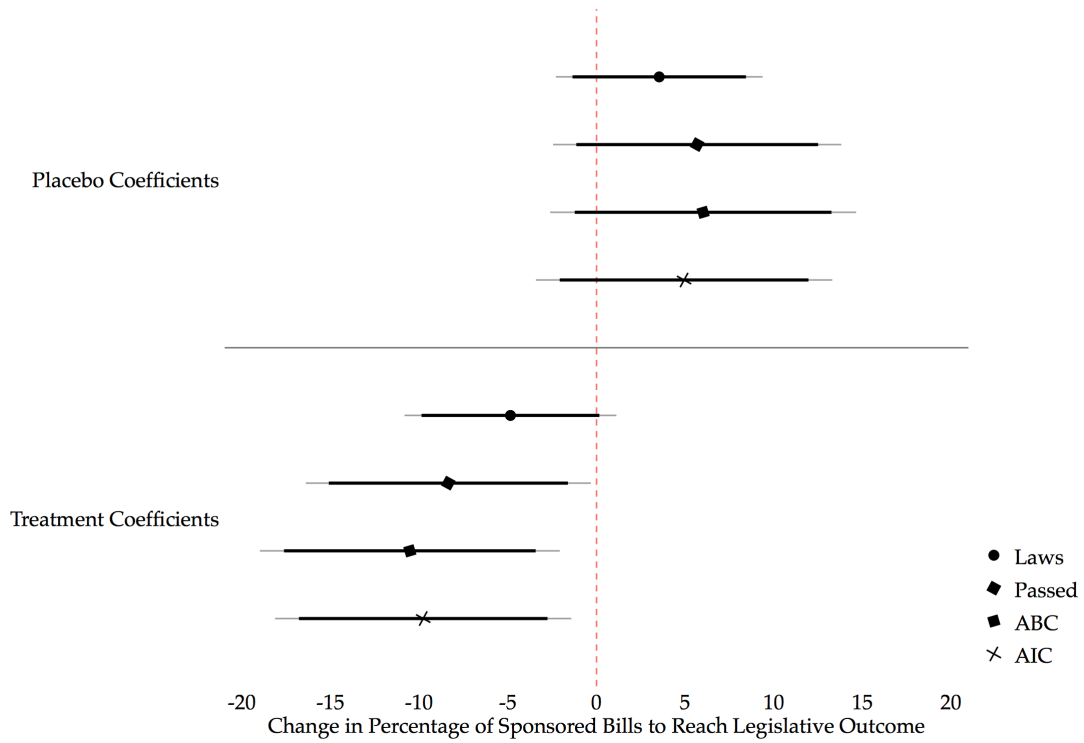


Figure A3: *DSG Receipts from 1987 Compared to the Blue Dog PAC*

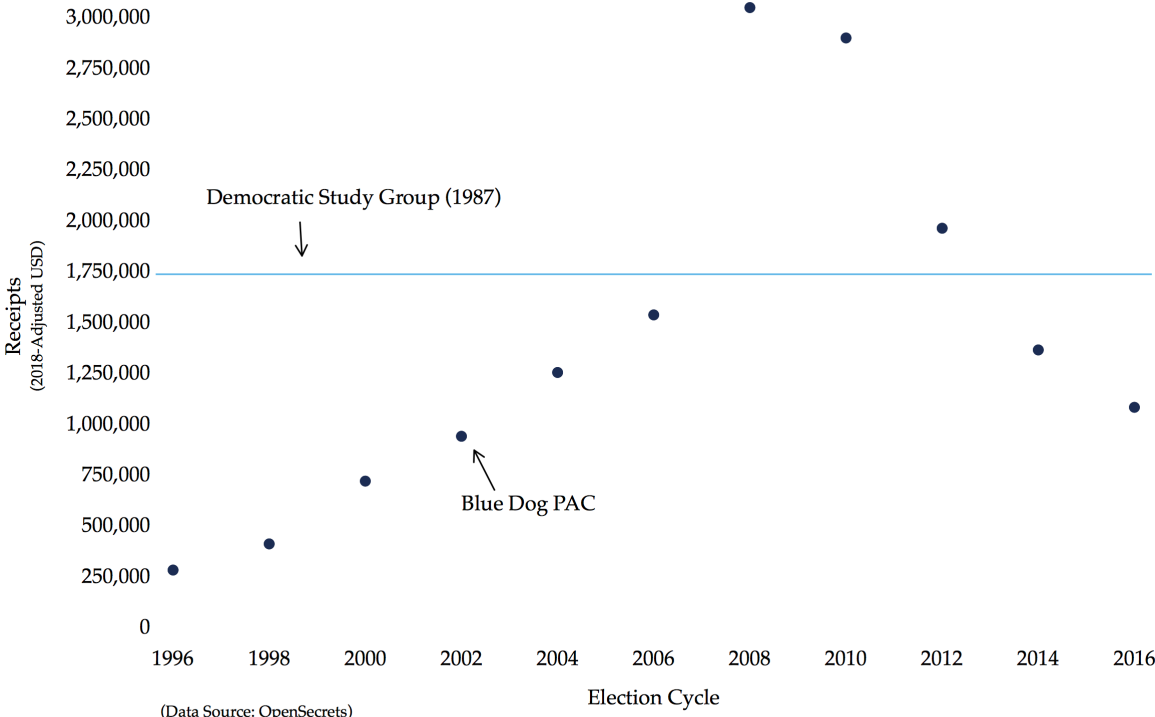


Figure A4: Results from Figure 3, Excluding DSG and RSC

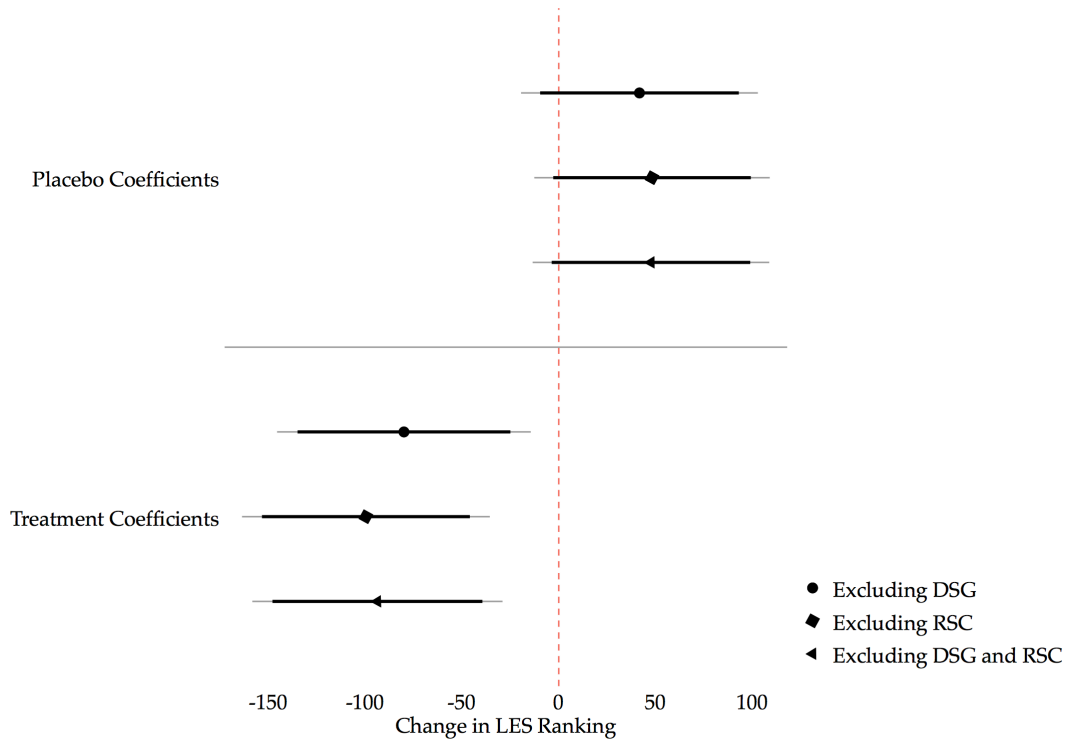


Figure A5: *Comparing Committee Chairs, LSO Leaders, and Other Lawmakers*

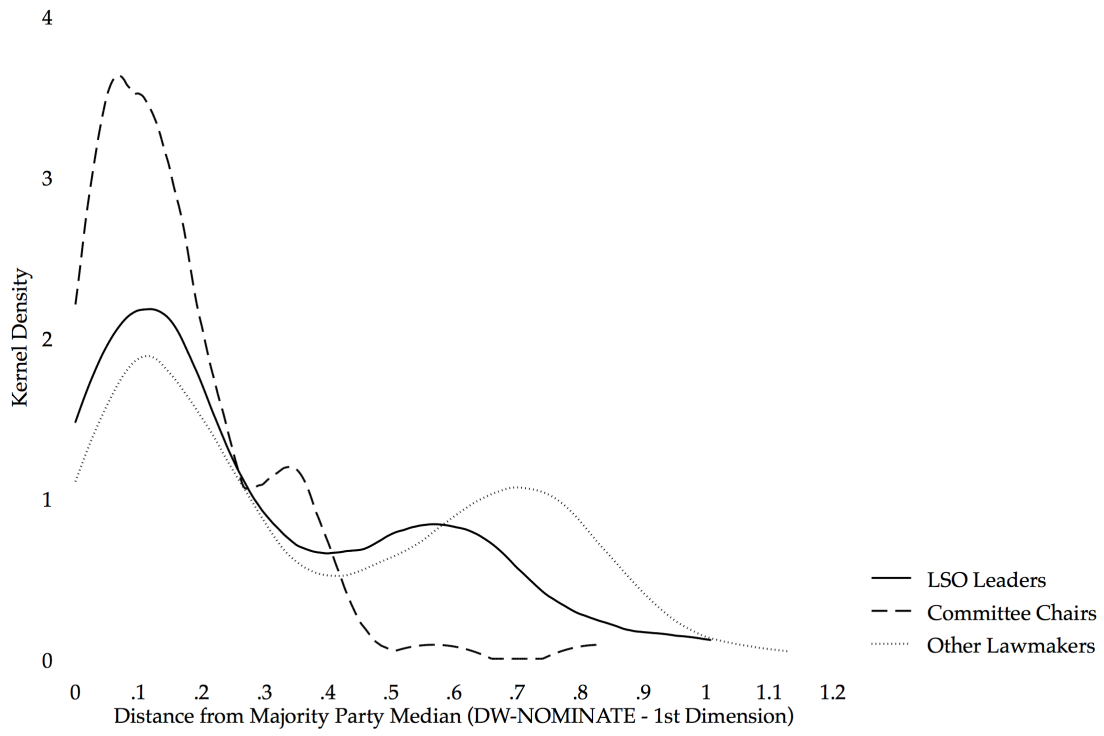


Figure A6: Comparing Majority Leaders and LSO Leaders Over Time

