



Fig. A1. Catalogue no 10, side A, detail under normal white light.



Fig. A2. Catalogue no 10, side A, detail after Visible-induced Infrared Luminescence (VIL) imaging.



Fig. A3. Catalogue no 10, side B, detail under normal white light.

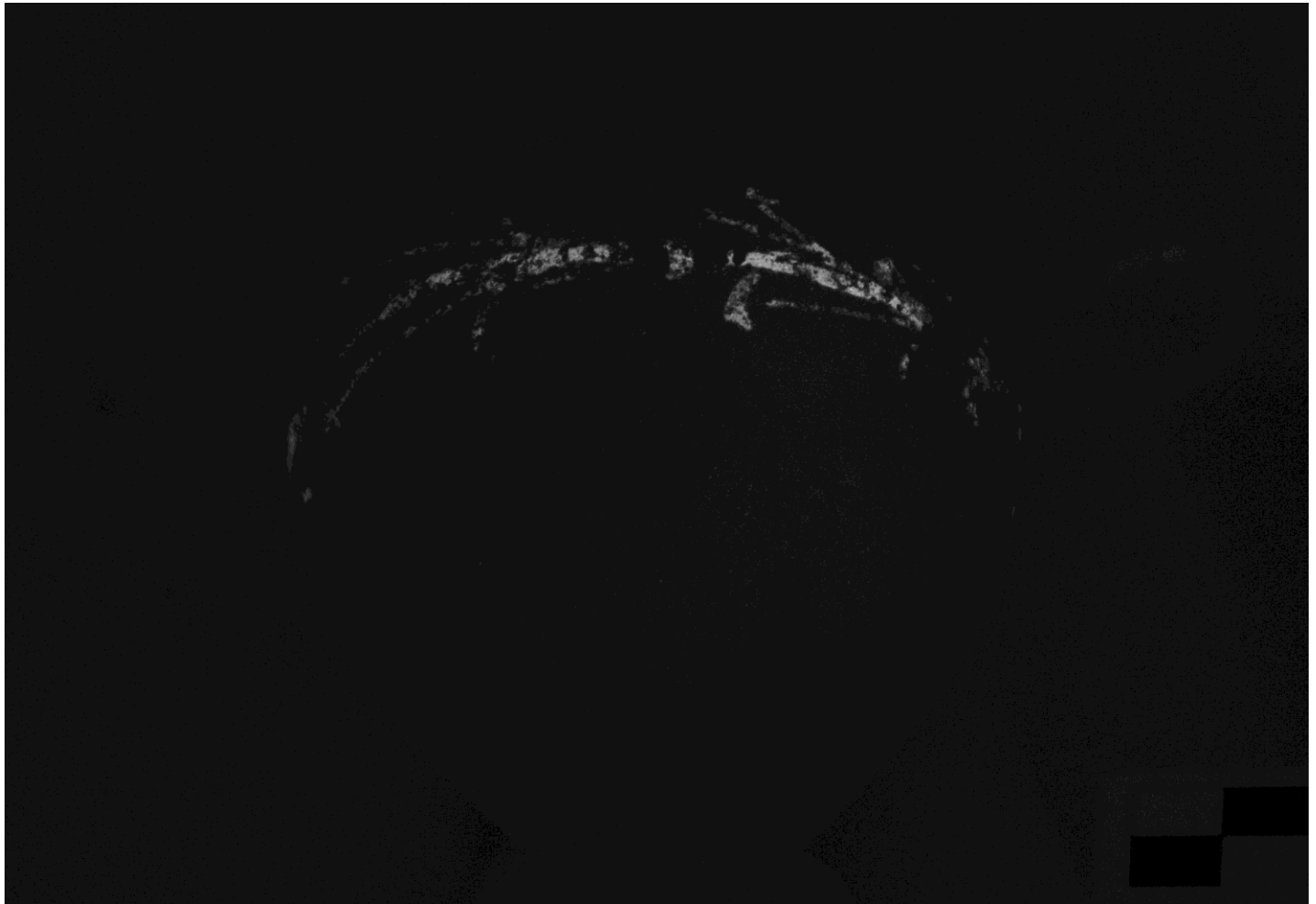


Fig. A4. Catalogue no 10, side B, detail after Visible-induced Infrared Luminescence (VIL) imaging.



Fig. A5. Catalogue no 2, frontal view of the peploforos A, under normal white light.



Fig. A6. Catalogue no 2, frontal view of the peploforos A after Visible-induced Infrared Luminescence (VIL) imaging.



Fig. A7. Catalogue no 2, 3/4 view of the peploforos A, under normal white light.



Fig. A8. Catalogue no 2, 3/4 view of the peploforos A, after Visible-induced Infrared Luminescence (VIL) imaging.





Fig. A9. Catalogue no 3, side view of the vase, under normal white light.

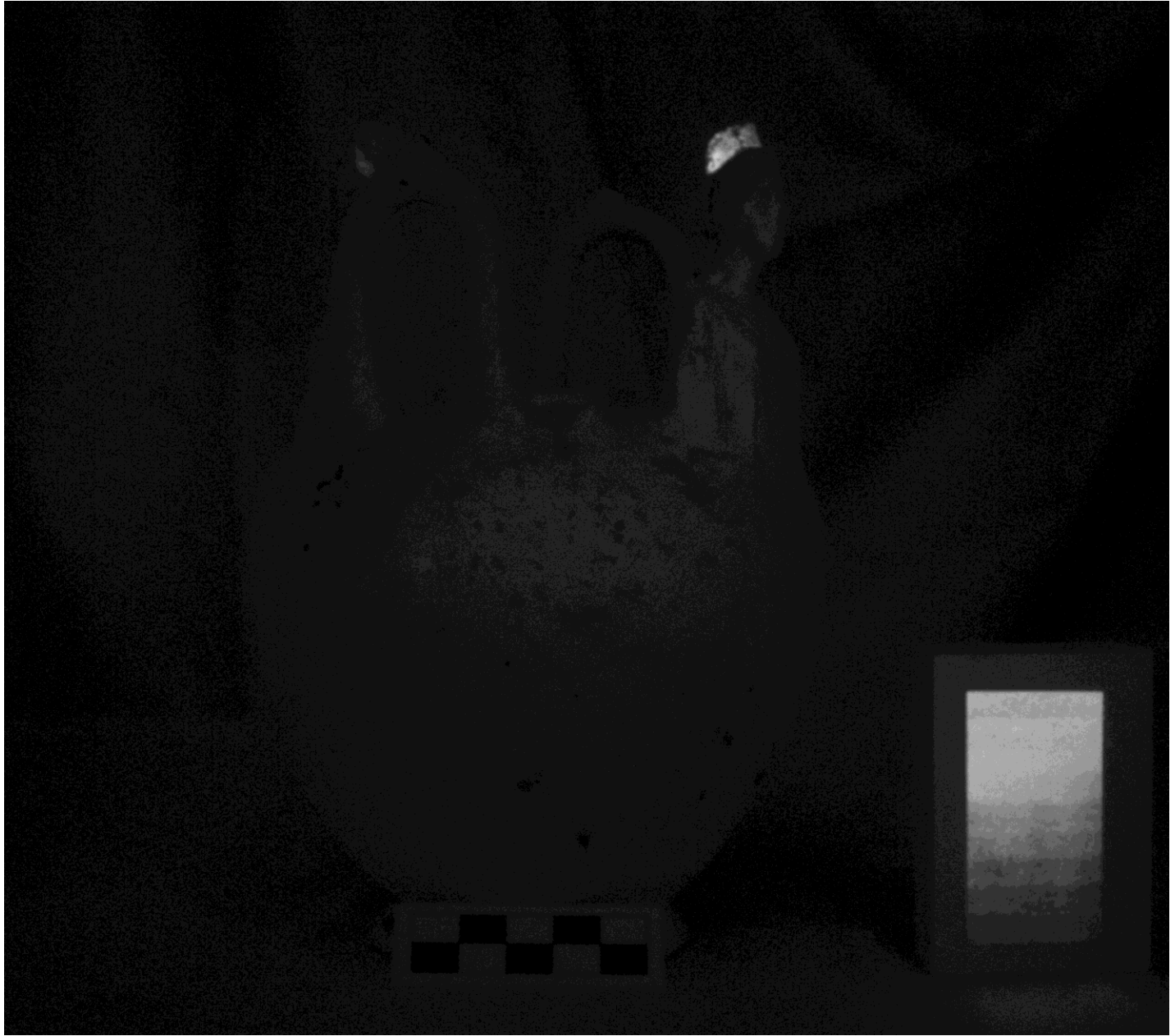


Fig. A10. Catalogue no 3, side view of the vase, after Visible-induced Infrared Luminescence (VIL) imaging.



Fig. A11. Catalogue no 3, side view of the vase, closer image under normal white light.



Fig. A12. Catalogue no 3, side view of the vase, closer image after Visible-induced Infrared Luminescence (VIL) imaging.



Fig. A13. Catalogue no 3, side A, frontal view under normal white light.



Fig. A14. Catalogue no 3, side A, frontal view, detail of the peploforos after Visible-induced Infrared Luminescence (VIL) imaging.



Fig. A15. Catalogue no 5, view of the peploforos A, under normal white light, the images were acquired before restoration.

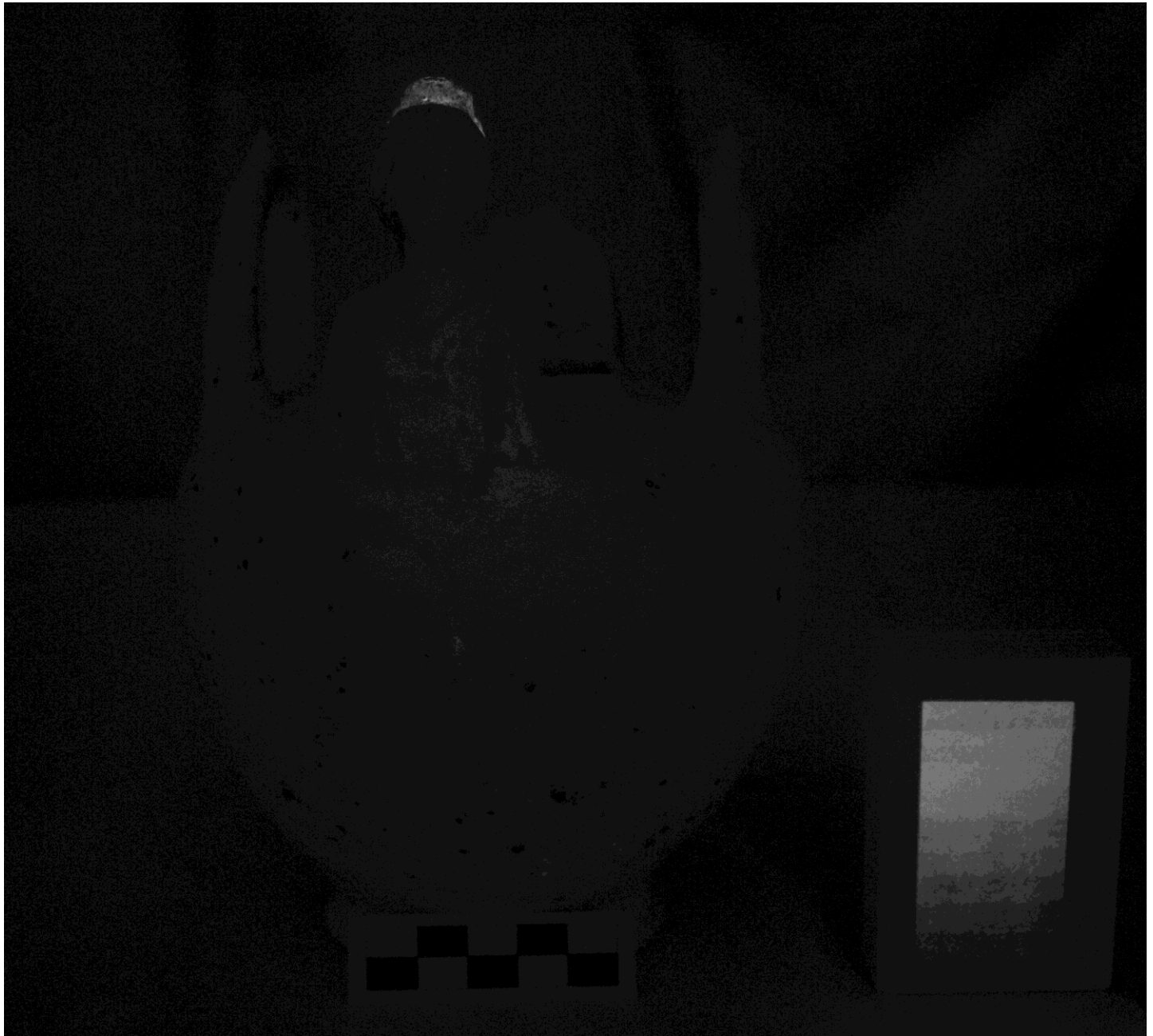


Fig. A16. Catalogue no 5, view of the peploforos A after Visible-induced Infrared Luminescence (VIL) imaging.





Fig. A17. Catalogue no 5, view of the lid, under normal white light.

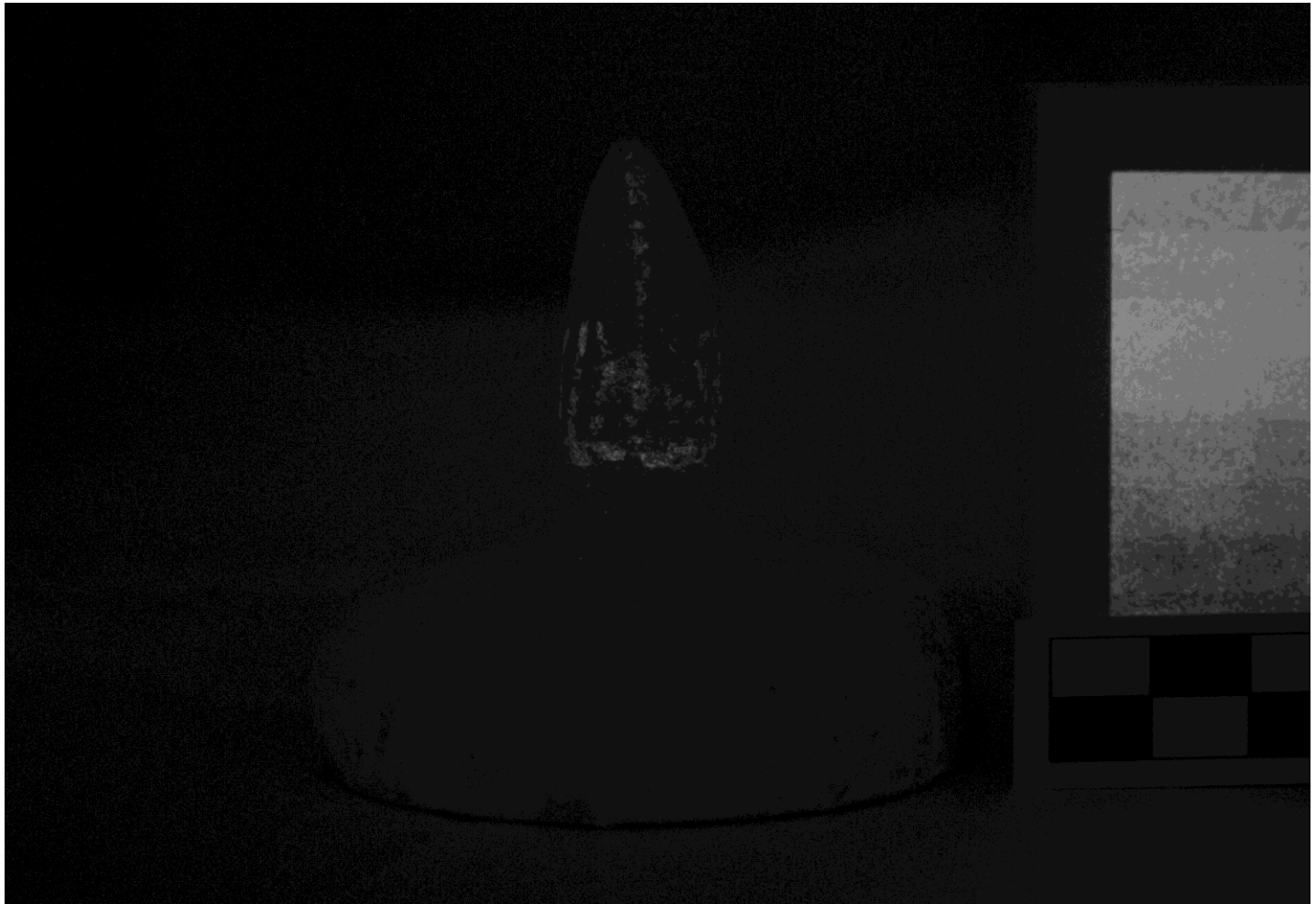


Fig. A18. Catalogue no 5, view of the lid in Visible-induced Infrared Luminescence (VIL), where the shape of the blue pattern is evidenced.



Fig. A19. Catalogue no 1, detail of the frontal scene, under normal white light.

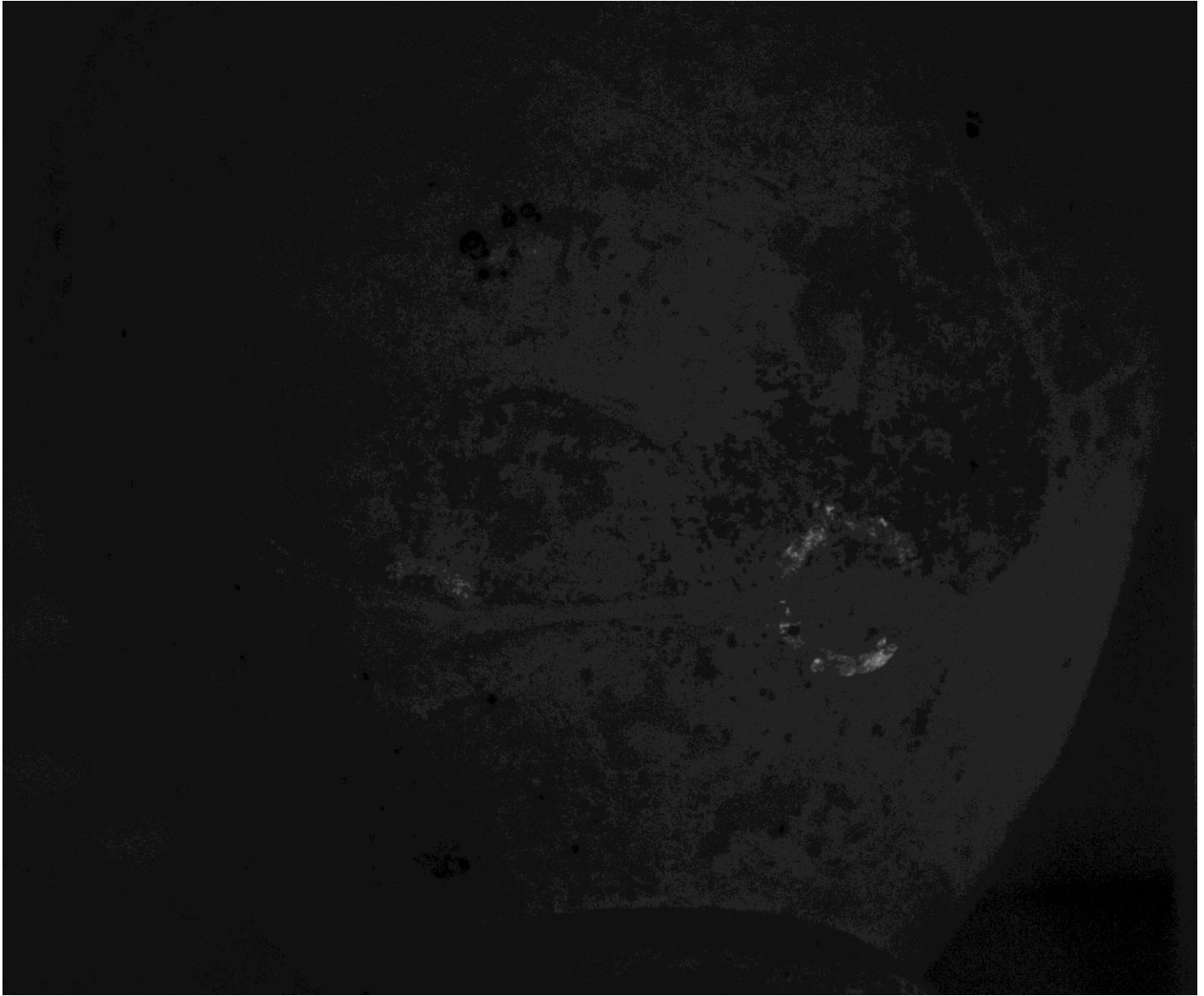


Fig. A20. Catalogue no 1, detail of the frontal scene, after Visible-induced Infrared Luminescence (VIL) imaging.