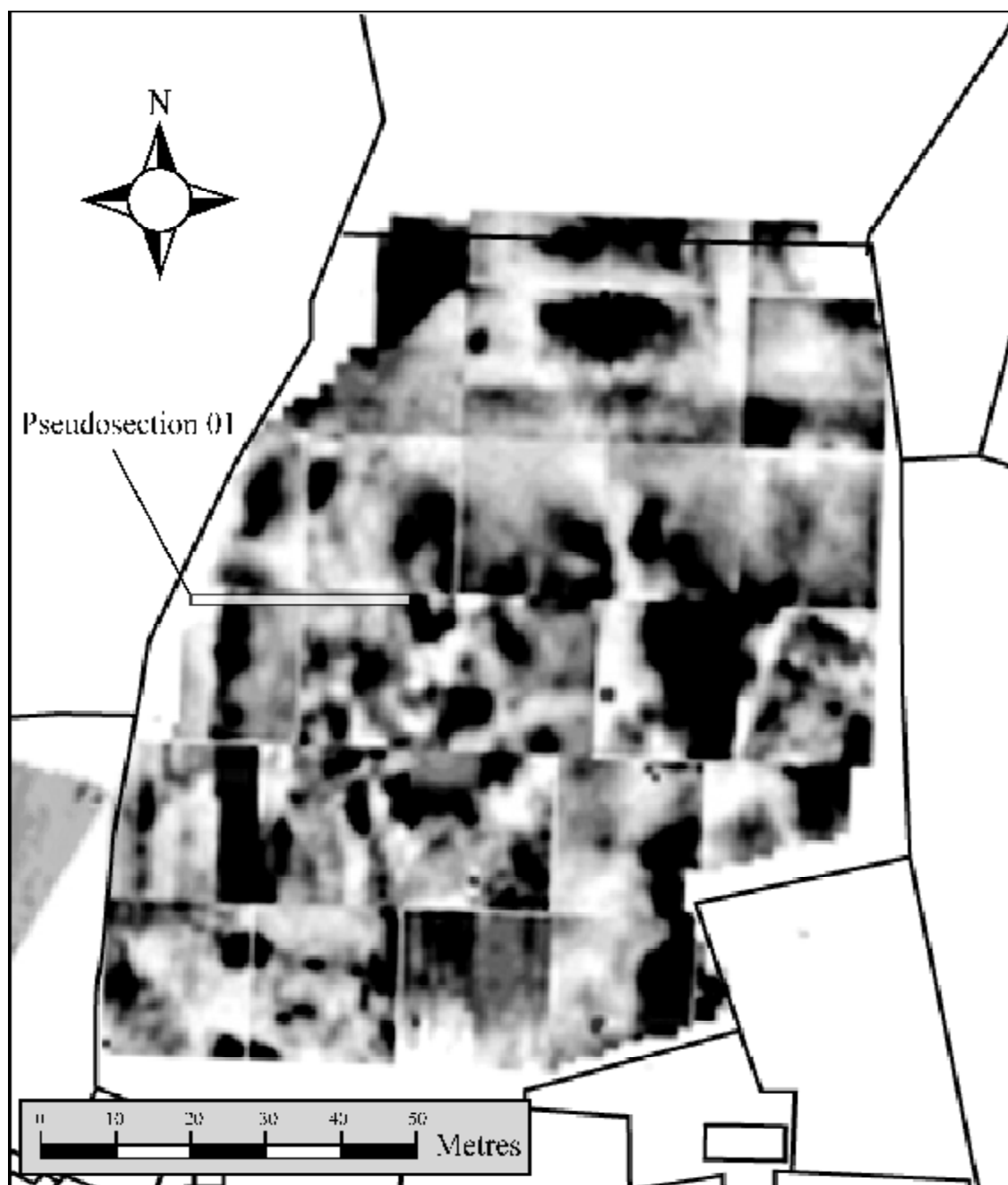


GATCOMBE ROMAN SETTLEMENT – GEOPHYSICAL SURVEYS 2009–2010

By R.P.M. Smisson and P. Groves

SUPPLEMENTARY MATERIAL

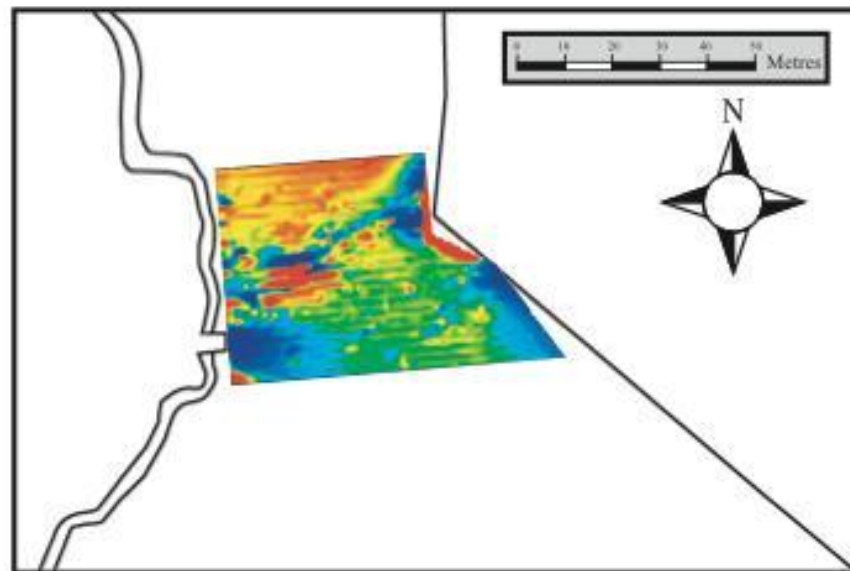
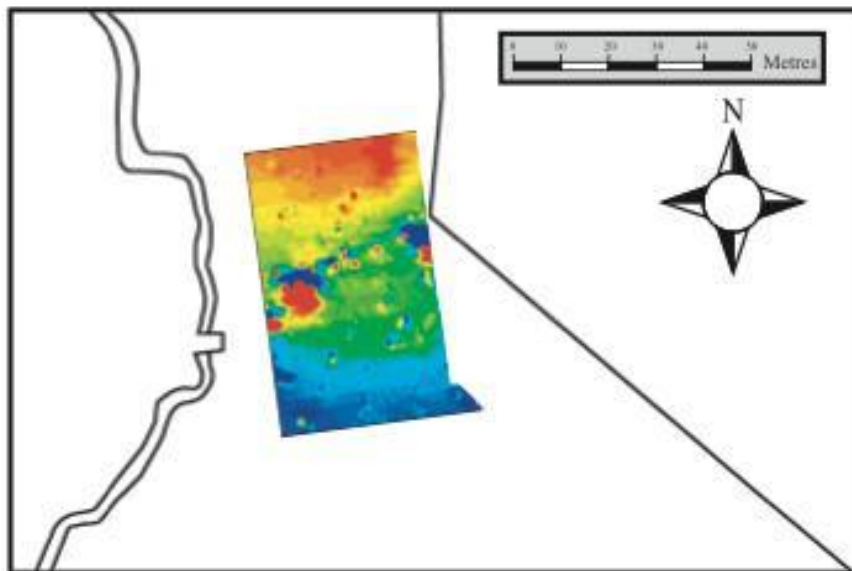
ONLINE FIG. 1. Gatcombe Court Upper Orchard: resistivity survey and location of electric pseudo-sections.



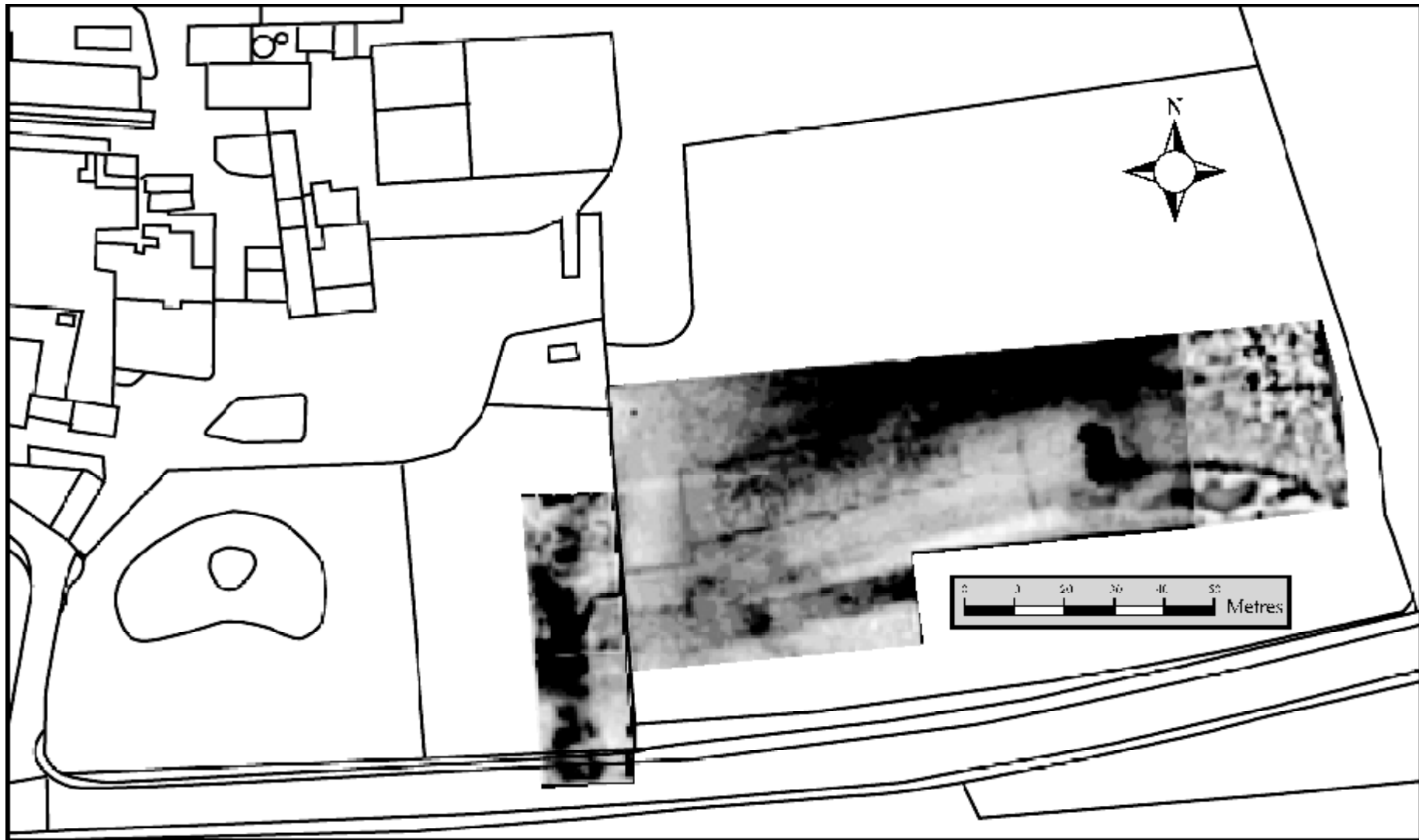
ONLINE FIG. 2. Probable alignment of the west and south walls in the western field south of the railway.



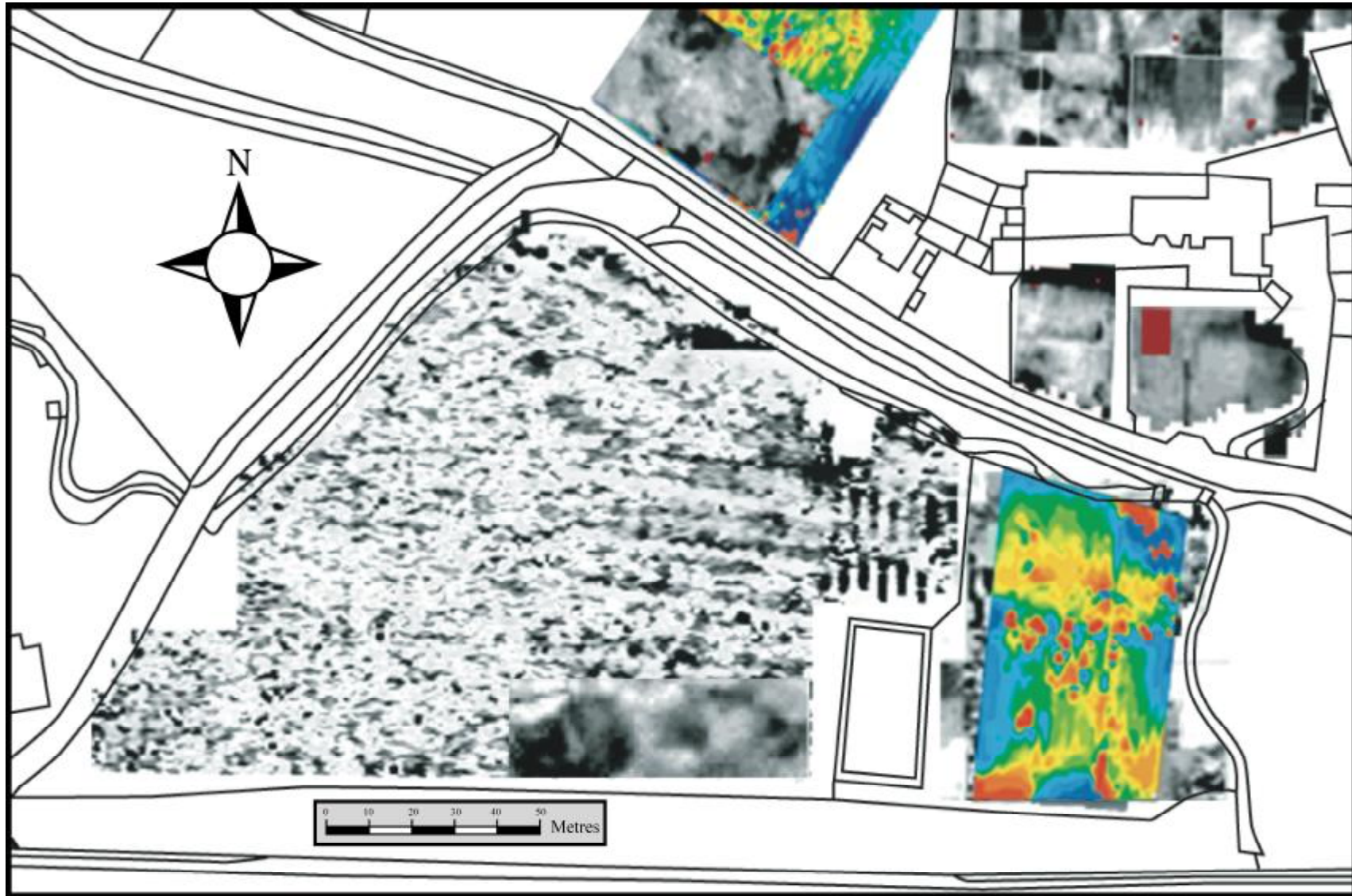
ONLINE FIG. 3. Caesium Magnetometer and Gradiometer results from the central field south of the railway.



ONLINE FIG. 4. Resistivity survey of the east wall and external field.

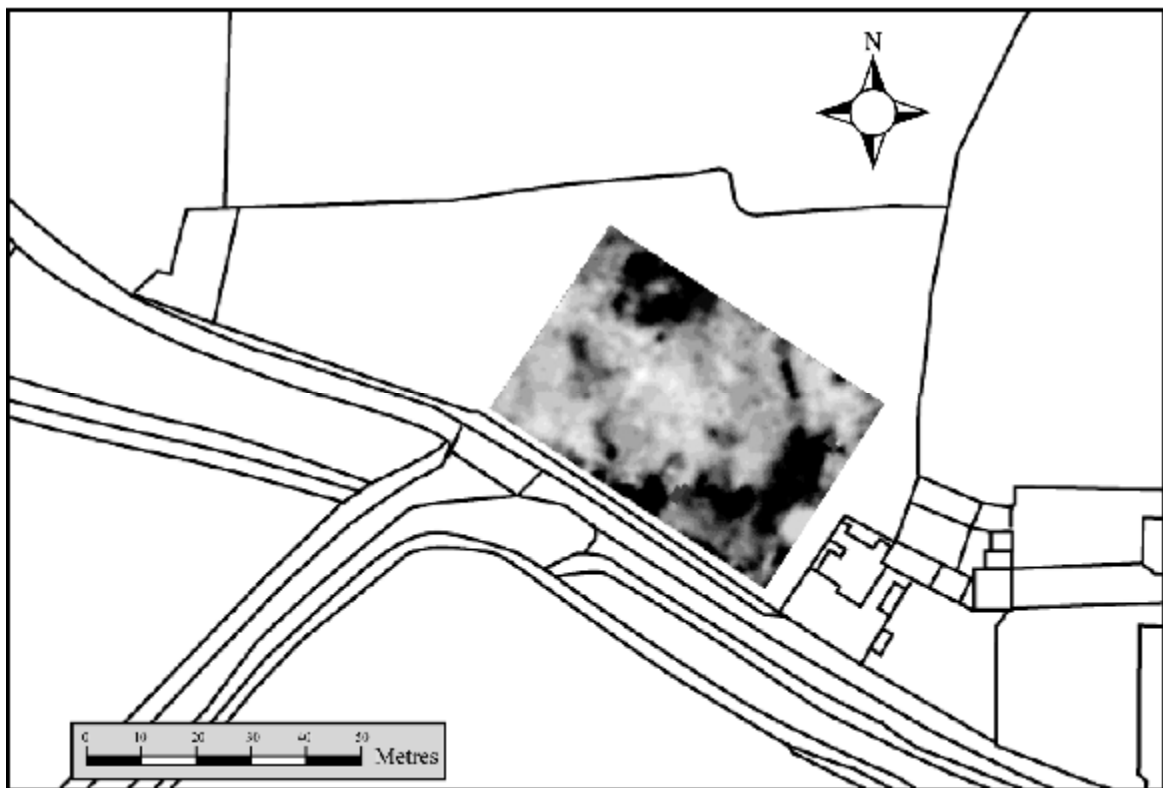
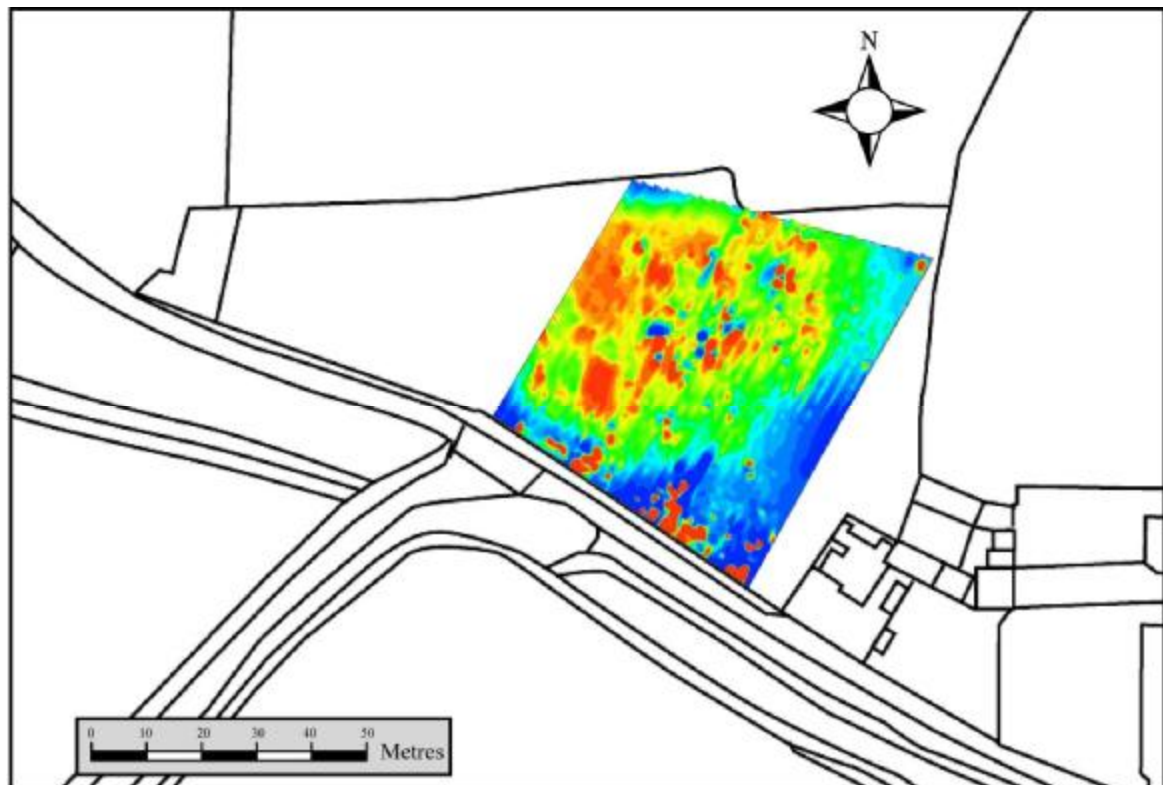


ONLINE FIG. 5. YCCART's magnetometry results in How Mead and Gatcombe Court's car park.





ONLINE FIG. 6. Gatcombe Court Lower Orchard: gradiometer and follow up resistivity showing evidence for buildings.



ONLINE FIG. 7. Summary plan with all surveys and interpretations.

