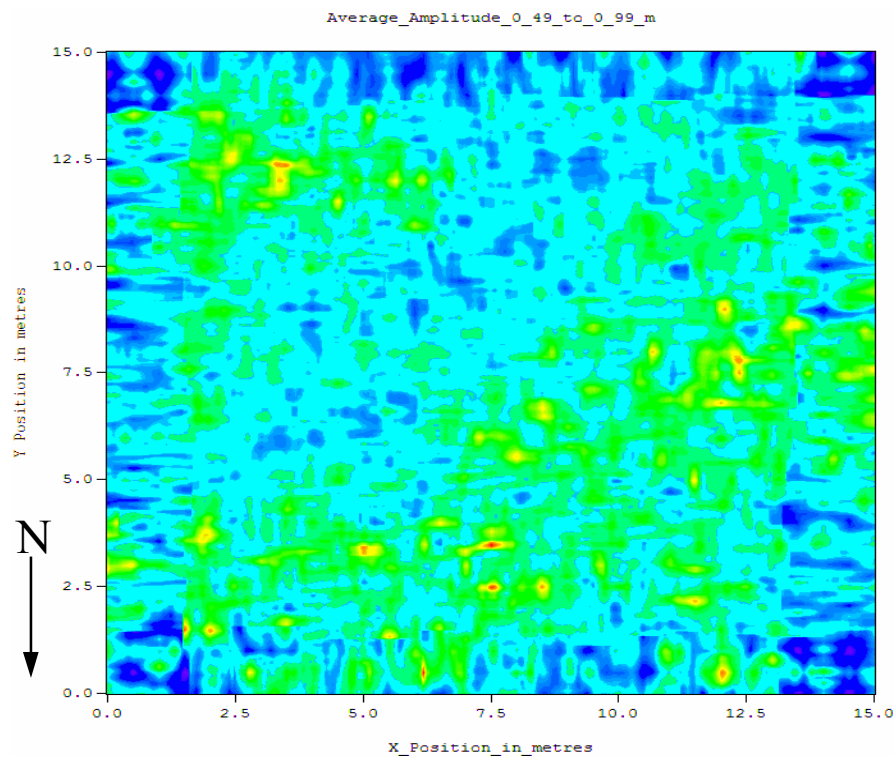
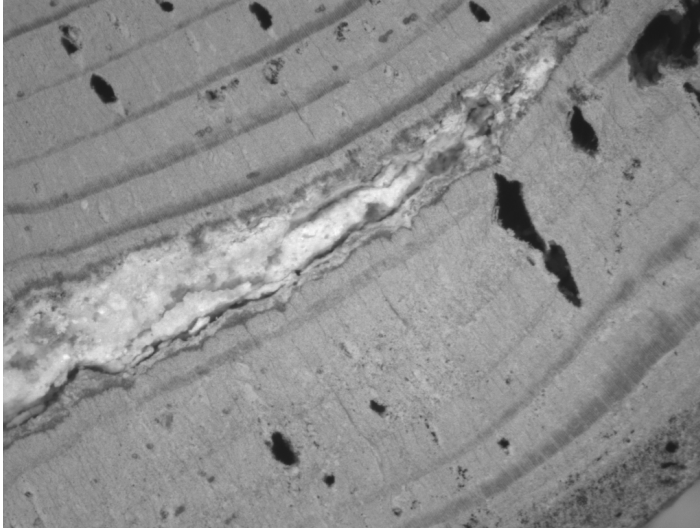


1  
2 **Supplemental Information to:**  
3 Environment and paleoecology of a 12 ka mid-North American  
4  
5  
6  
7  
8  
9  
10  
11  
12  
13  
14  
15  
16  
17  
18  
19  
20  
21  
22  
23  
24  
25  
26  
27  
28  
29

**Younger Dryas forest chronicled in tree rings**

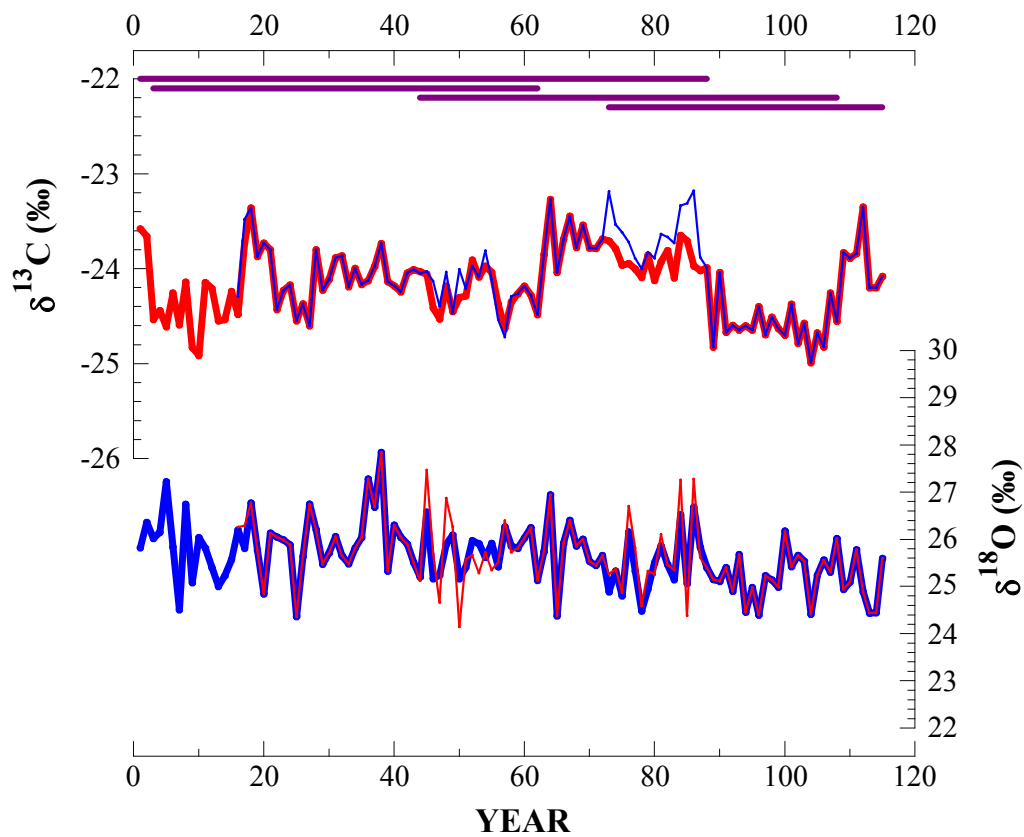


**Supplemental Figure 1.** A 15 m × 15 m ground-penetrating radar map of the 0.5 to 1 m depth below the surface. The yellow and red fields indicate low-velocity anomalies that may be the location of stumps (analysis by T. A. Thompson from the field survey of November 8, 2005).



30  
31  
32  
33

**Supplemental Figure 2.** Scar with wedge of dried resin in center of photo of Liverpool East sample. Cause of traumatic event producing the scar is not known. (imaging by M. Munro).



34  
 35  
 36  
 37  
 38  
 39  
 40

**Supplemental Figure 3.** Sensitivity test of the effect of removing the first 15 years of each isotope chronology to account for possible “juvenile effects”. The thick lines are the respective average  $\delta^{13}\text{C}$  and  $\delta^{18}\text{O}$  curves from Figure 9, and the thin lines are mean isotope curves after the first 15 years of each of the four individual isotope series were removed.