

STable 1: Bayesian Information Criterion estimates of model fit with and without interaction of sex with smoothed age effect (main effect). SAPS=Scale for the Assessment of Positive Symptoms; SANS=Scale for the Assessment of Negative Symptoms

	Interaction + Main Effect	Main Effect Only
SAPS Total Score	3537.4	3537.3
SAPS Perceptual Score	3524.8	3522.2
SAPS Non-Perceptual Score	3450.2	3450.6
SANS Total Score	873.8	872.8

STable 2: Developmental effects on psychotic symptoms in first episode psychosis when Intelligence Quotient (IQ) is included as covariate. SAPS=Scale for the Assessment of Positive Symptoms; SANS=Scale for the Assessment of Negative Symptoms

	F-value	p-value	q-value
SAPS Total Score	0.26	0.565	0.565
SAPS Perceptual Score	4.23	0.014	0.028
SAPS NonPerceptual Score	5.29	0.005	0.02
SANS Total Score	0.71	0.365	0.487

STable 3: Developmental effects on psychotic symptoms in first episode psychosis when parental socioeconomic status is included as covariate. SAPS=Scale for the Assessment of Positive Symptoms; SANS=Scale for the Assessment of Negative Symptoms

	F-value	p-value	q-value
SAPS Total Score	0.17	0.666	0.725
SAPS Perceptual Score	7.40	0.002	0.008
SAPS NonPerceptual Score	2.73	0.044	0.088
SANS Total Score	0.12	0.725	0.725

STable 4: Developmental effects on psychotic symptoms in first episode psychosis when illness duration is included as covariate in the model. SAPS=Scale for the Assessment of Positive Symptoms; SANS=Scale for the Assessment of Negative Symptoms

	F-value	p-value	q-value
SAPS Total Score	0.04	0.846	0.954
SAPS Perceptual Score	8.32	1.93e-04	7.72e-04
SAPS NonPerceptual Score	2.32	0.065	0.13

	F-value	p-value	q-value
SANS Total Score	0.00	0.954	0.954

STable 5: Developmental effects on psychotic symptoms in first episode psychosis when antipsychotic medication status at each time point is included as covariate.SAPS=Scale for the Assessment of Positive Symptoms; SANS=Scale for the Assessment of Negative Symptoms

	F-value	p-value	q-value
SAPS Total Score	0.31	0.577	0.769
SAPS Perceptual Score	7.43	6.04e-04	0.002
SAPS NonPerceptual Score	3.95	0.018	0.036
SANS Total Score	0.01	0.931	0.931

STable 6: Developmental effects on psychotic symptoms in first episode psychosis when race is included as covariate.SAPS=Scale for the Assessment of Positive Symptoms; SANS=Scale for the Assessment of Negative Symptoms

	F-value	p-value	q-value
SAPS Total Score	0.41	0.524	0.699
SAPS Perceptual Score	7.40	4.24e-04	0.002
SAPS NonPerceptual Score	4.16	0.014	0.028
SANS Total Score	0.04	0.835	0.835

STable 7: Developmental effects on psychotic symptoms in first episode psychosis when lifetime cannabis disorder diagnosis as covariate.SAPS=Scale for the Assessment of Positive Symptoms; SANS=Scale for the Assessment of Negative Symptoms

	F-value	p-value	q-value
SAPS Total Score	0.30	0.585	0.78
SAPS Perceptual Score	7.34	4.96e-04	0.002
SAPS NonPerceptual Score	3.87	0.02	0.04
SANS Total Score	0.00	0.965	0.965

STable 8: Developmental effects on psychotic symptoms in first episode psychosis when lifetime cannabis disorder diagnosis (excluding individuals in full remission) as covariate. SAPS=Scale for the Assessment of Positive Symptoms; SANS=Scale for the Assessment of Negative Symptoms

	F-value	p-value	q-value
SAPS Total Score	0.30	0.585	0.78

	F-value	p-value	q-value
SAPS Perceptual Score	7.34	4.96e-04	0.002
SAPS NonPerceptual Score	3.87	0.02	0.04
SANS Total Score	0.00	0.965	0.965

STable 9: Developmental effects on psychotic symptoms in first episode psychosis when current cannabis disorder diagnosis is included as covariate. SAPS=Scale for the Assessment of Positive Symptoms; SANS=Scale for the Assessment of Negative Symptoms

	F-value	p-value	q-value
SAPS Total Score	0.30	0.585	0.78
SAPS Perceptual Score	7.59	4.98e-04	0.002
SAPS NonPerceptual Score	4.15	0.014	0.028
SANS Total Score	0.02	0.897	0.897

STable 10: Developmental effects on psychotic symptoms in first episode psychosis when number of days between visits is included as covariate. SAPS=Scale for the Assessment of Positive Symptoms; SANS=Scale for the Assessment of Negative Symptoms

	F-value	p-value	q-value
SAPS Total Score	0.32	0.567	0.756
SAPS Perceptual Score	6.87	0.001	0.004
SAPS NonPerceptual Score	4.05	0.016	0.032
SANS Total Score	0.07	0.797	0.797

STable 11: Age-associated effects of psychotic symptoms in first episode psychosis when only cross-sectional data (visit 1) is included in the model. SAPS=Scale for the Assessment of Positive Symptoms; SANS=Scale for the Assessment of Negative Symptoms

	F-value	p-value	q-value
SAPS Total Score	1.64	0.201	0.268
SAPS Perceptual Score	4.37	0.004	0.016
SAPS NonPerceptual Score	4.62	0.009	0.018
SANS Total Score	0.39	0.534	0.534

STable 12: Developmental effects on psychotic symptoms in first episode psychosis when age at each visit is included as a main effect for all visits. SAPS=Scale for the Assessment of Positive Symptoms; SANS=Scale for the Assessment of Negative Symptoms

	F-value	p-value	q-value
SAPS Total Score	0.24	0.604	0.805
SAPS Perceptual Score	7.43	5.99e-04	0.002
SAPS NonPerceptual Score	4.04	0.016	0.032
SANS Total Score	0.00	0.952	0.952

STable 13: Developmental effects on negative symptoms in first episode psychosis. SANS=Scale for the Assessment of Negative Symptoms

	F-value	p-value	q-value
SANS Flat Affect Score	6.39	0.002	0.005
SANS Anhedonia Score	7.88	3.29e-04	0.002
SANS Alogia Score	2.89	0.043	0.072
SANS Apathy Score	0.60	0.477	0.477
SANS Attention Score	1.52	0.221	0.276

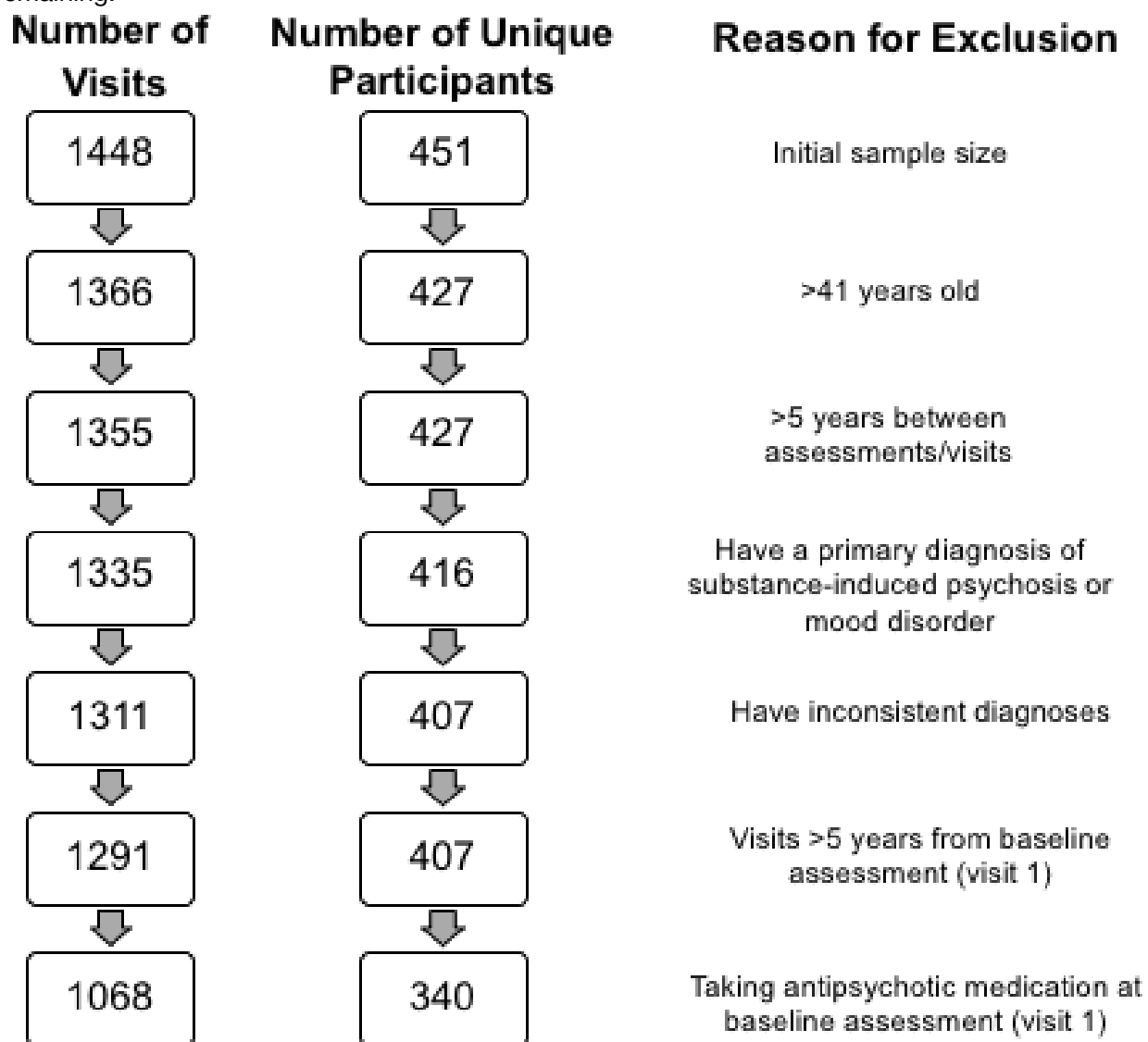
STable 14: Effects of development on change in symptom presentation between each visit. SAPS=Scale for the Assessment of Positive Symptoms, SANS=Scale for the Assessment of Negative Symptoms

	F-value	p-value
SAPS Total Score	0.06	0.813
SAPS Perceptual Score	0.85	0.449
SAPS NonPerceptual Score	0.26	0.783
SANS Total Score	0.66	0.417

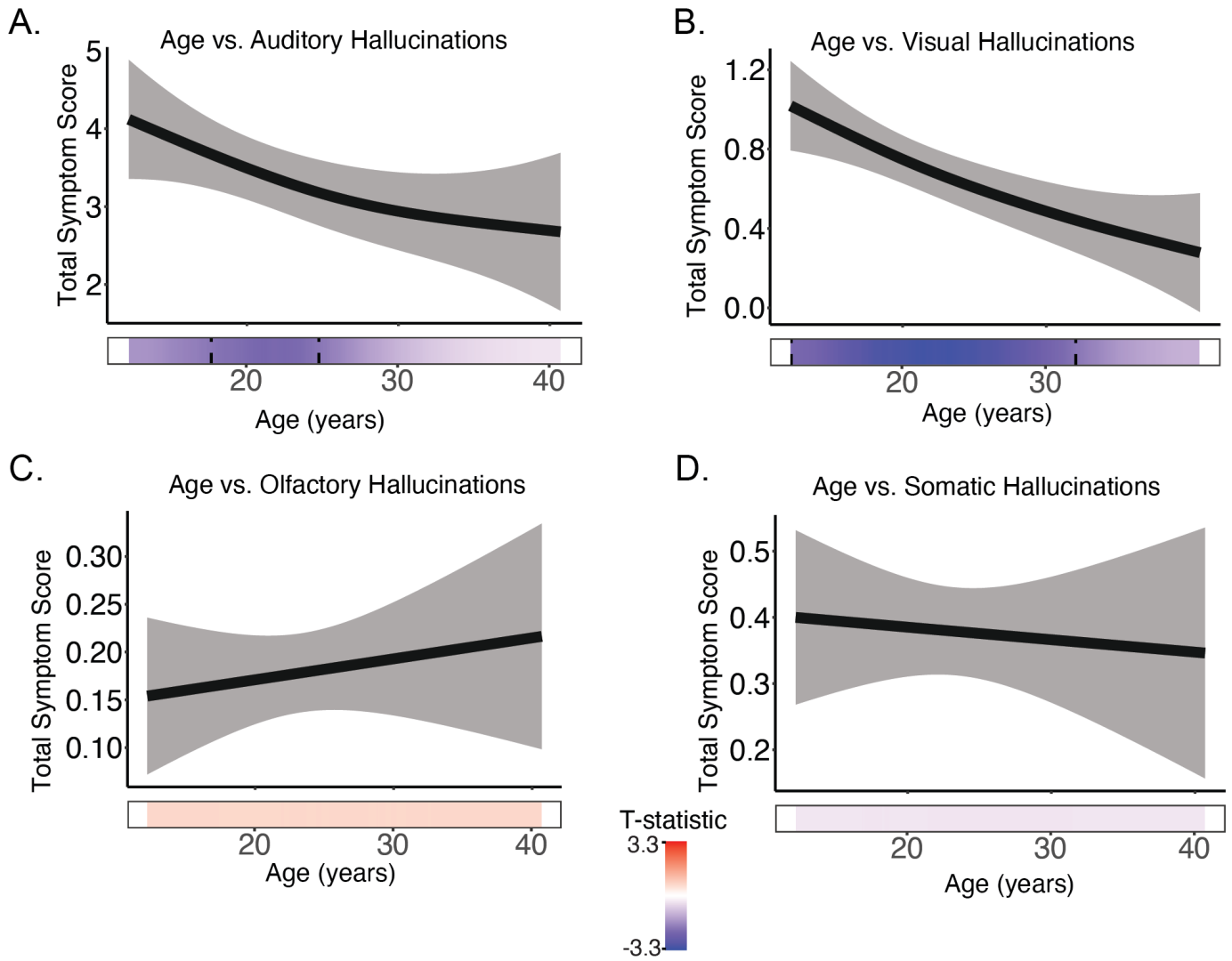
STable 15: Effects of development on change in symptom presentation between baseline symptom severity and symptom severity at each subsequent visit. SAPS=Scale for the Assessment of Positive Symptoms, SANS=Scale for the Assessment of Negative Symptoms

	F-value	p-value	q-value
Change in SAPS Total Score	1.12	0.436	0.5813333333333333
Change in SAPS Perceptual Score	2.68	0.039	0.078
Change in SAPS NonPerceptual Score	0.55	0.66	0.66
Change in SANS Total Score	4.75	0.03	0.078

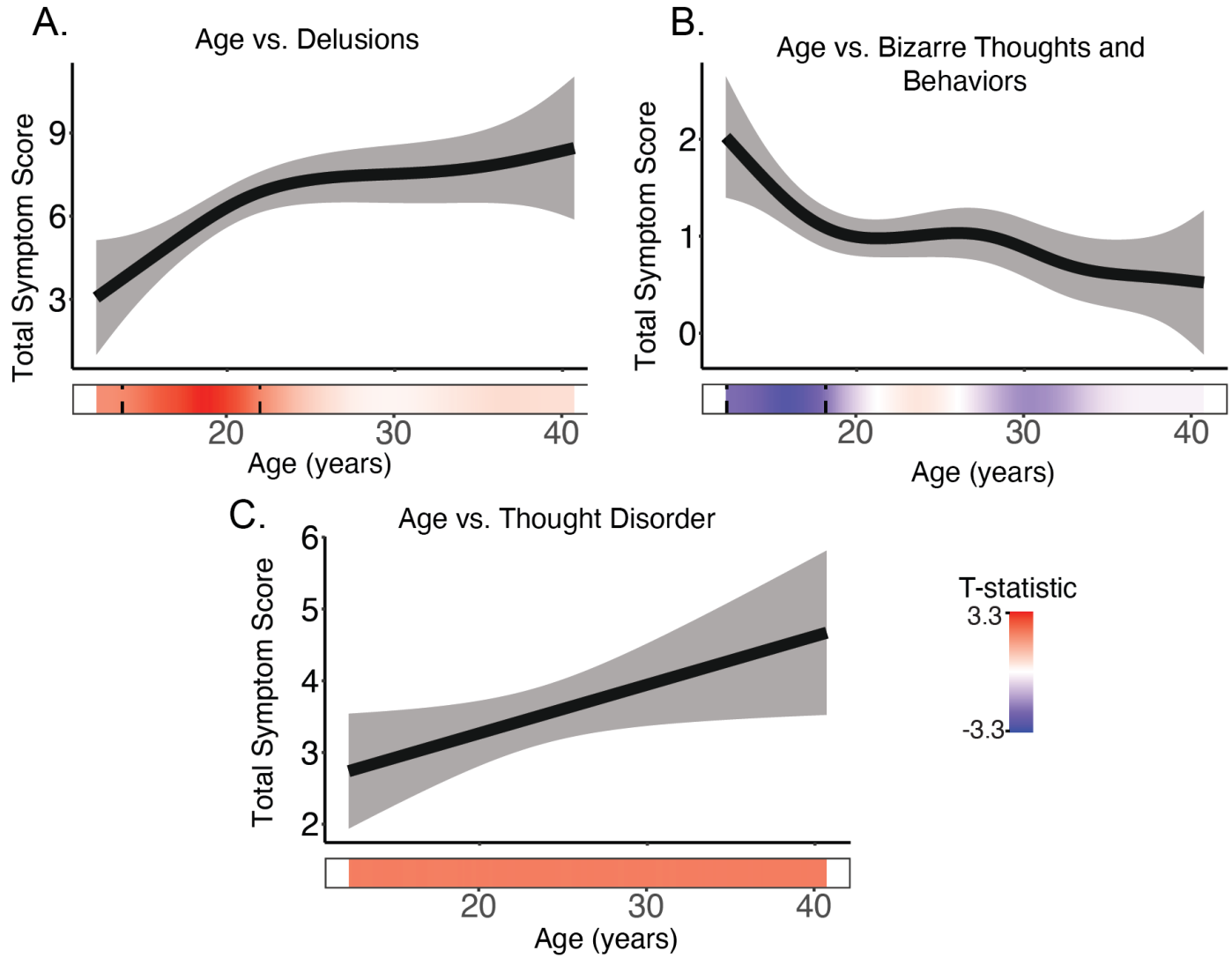
SFigure 1: Chart of initial participant sample size, followed by exclusion criteria and number of participants remaining.



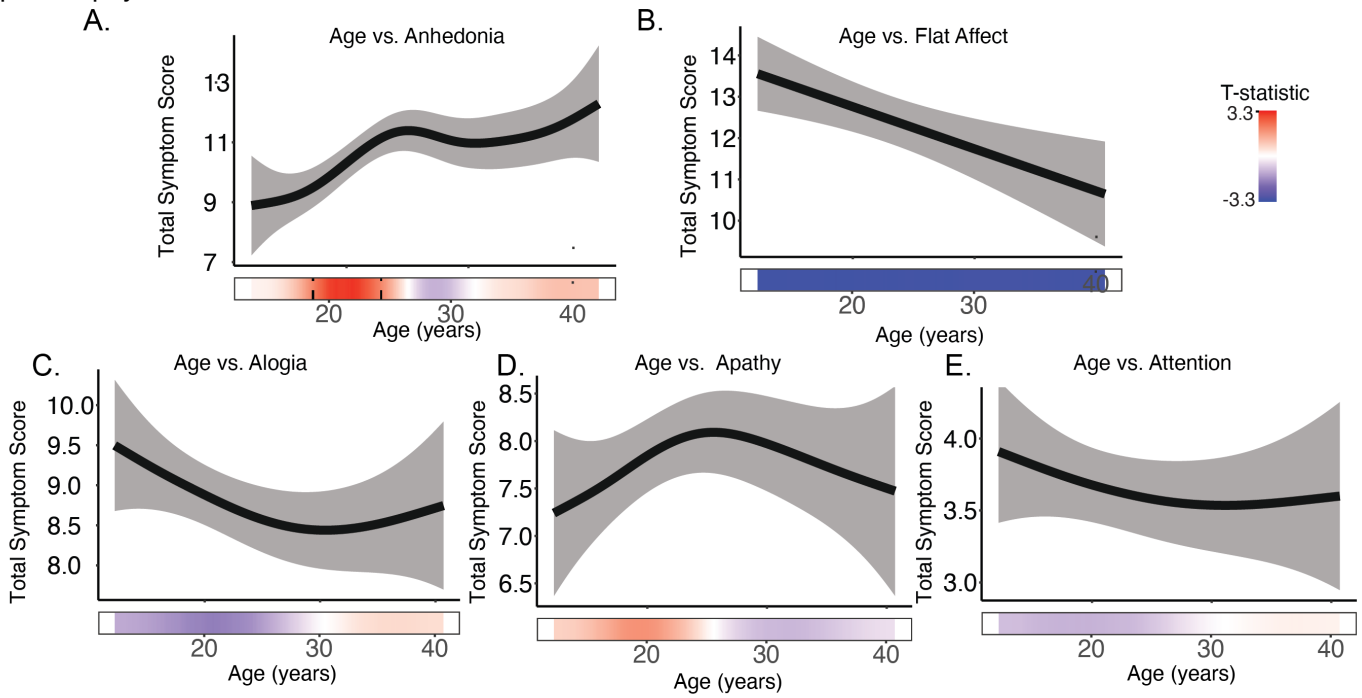
SFigure 2. Developmental effects of A) auditory, B) visual, C) olfactory, and D) somatic hallucinations in first episode psychosis.



SFigure 3. Developmental effects of A) delusions, B) bizarre thoughts and behaviors, and C) thought disorder symptoms in first episode psychosis.



SFigure 4. Developmental effects of A) anhedonia, B) flat affect, C) alogia, D) apathy, and E) attention in first episode psychosis.



SFigure 5: Waterfall showing length of time between visits for each participant. Individual subjects are on the y-axis and each circle represents an assessment.

