

Supplemental Information

Subregional anterior cingulate cortex functional connectivity revealed default network subsystem dysfunction in patients with major depressive disorder

Xiaolong Peng, Xiaoping Wu, Ruxue Gong, Rui Yang, Xiang Wang, Wenzhen Zhu, and Pan Lin

Inventory of Supplemental Information

Supplemental Figure:	Figure S1
	Figure S2
	Figure S3
Supplemental Table:	Table S1

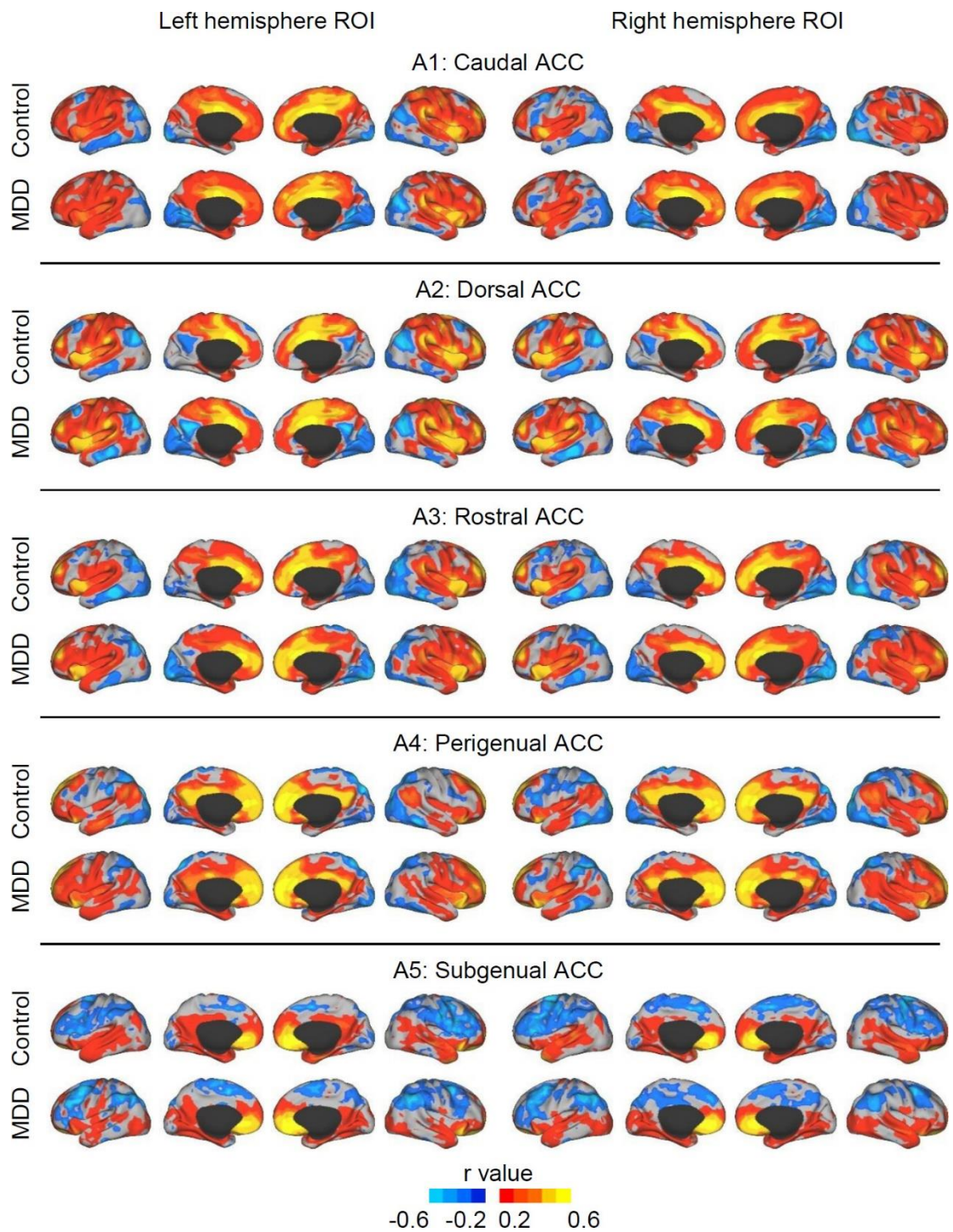


Figure S1. Spatial distributions of functional connectivity computed from different ACC sub-regional seeds. For each hemisphere, five ACC sub-regional seeds (A1, A2, A3, A4 and A5) are defined, including caudal ACC, dorsal ACC, rostral ACC, perigenual ACC and subgenual ACC. Connectivity maps of left hemisphere seeds are shown on the left, and maps of right hemisphere seeds are shown on the right.

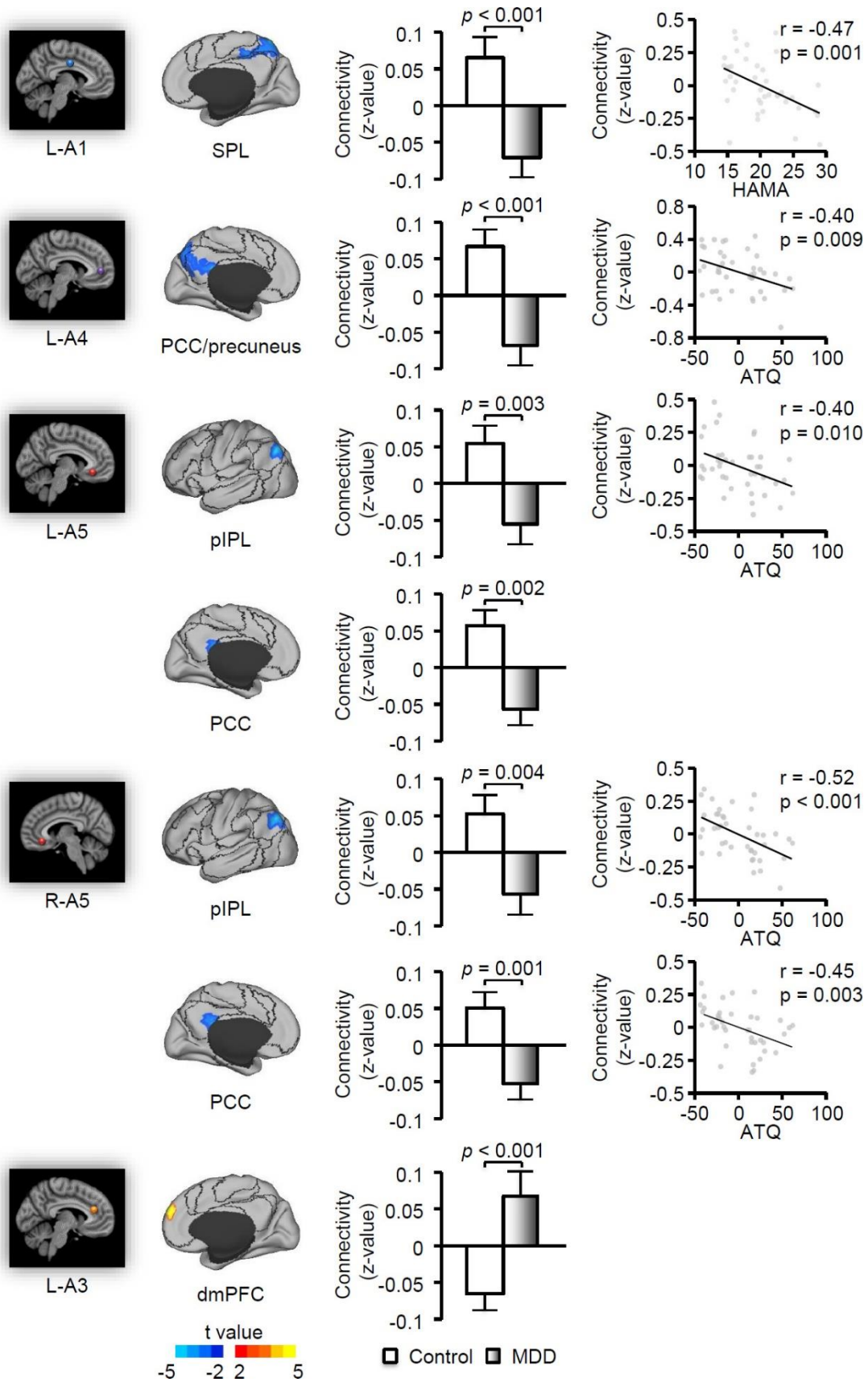


Figure S2. Functional connectivity decreased in MDD patients and negatively associated with depression severity (age corrected).

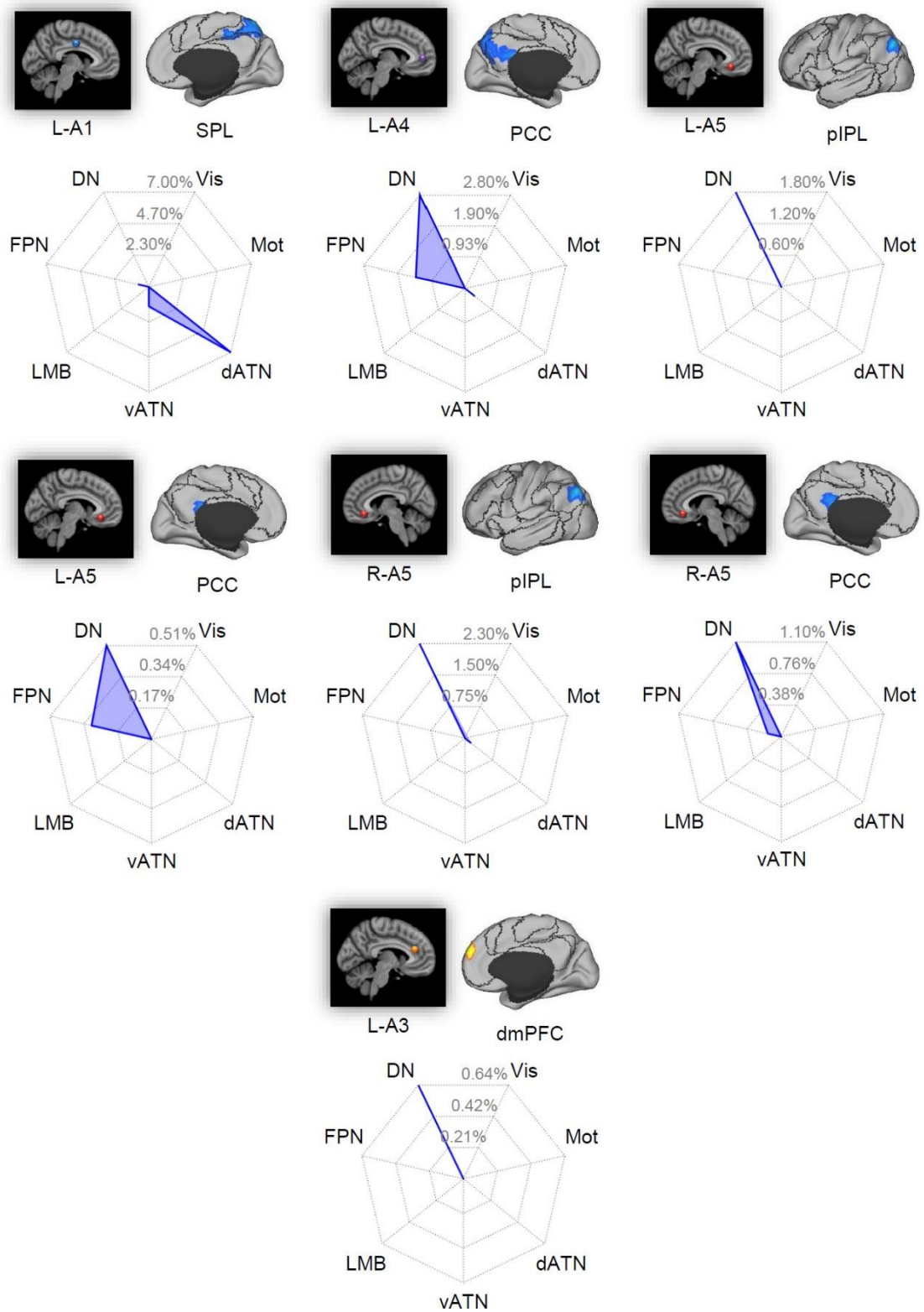


Figure S3. Overlapping FC abnormal regions in MDD with 7 functional networks.

Table S1. Demographic and clinical characteristics

Measure	MDD (n = 41)	HC (n = 43)	<i>p</i> value
Age (yrs)	33.41 ± 9.13	31.72 ± 8.93	0.39
Gender (M/F)	16/25	20/23	0.49
HAMD	23.68 ± 3.66	0.72 ± 0.88	< 10 ⁻¹⁰
HAMA	18.17 ± 4.35	0.53 ± 0.88	< 10 ⁻¹⁰
ATQ	85.98 ± 30.22	34.05 ± 5.94	< 10 ⁻¹⁰
FD (mm)	0.13 ± 0.13	0.10 ± 0.06	0.18
DVARs	16.54 ± 4.20	16.30 ± 3.36	0.77

MDD, major depressive disorder; HC, healthy control; M, male; F, female; HAMD, Hamilton Depression Scale; HAMA, Hamilton Anxiety Scale; ATQ, Automatic Thoughts Questionnaire; FD, framewise displacement.