

Supplementary Material

<https://doi.org/10.1017/S0033291717003877>

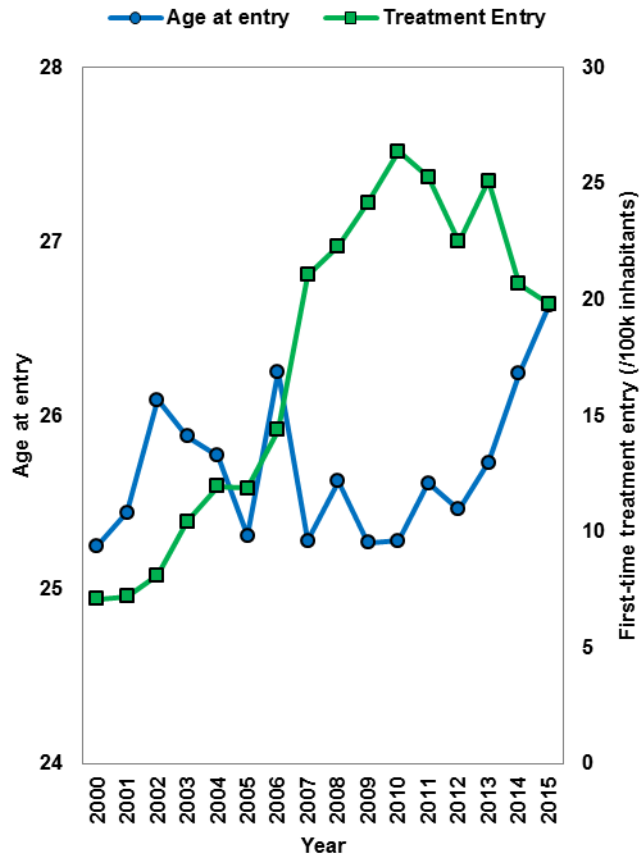
Changes in cannabis potency and first-time admissions to drug treatment: a 16-year study in the Netherlands

Tom P Freeman^{1,2*}, Peggy van der Pol³, Wil Kuijpers⁴, Jeroen Wisselink⁴, Ravi K Das², Sander Rigter³, Margriet van Laar³, Paul Griffiths⁵, Wendy Swift⁶, Raymond Niesink³, Michael T Lynskey¹

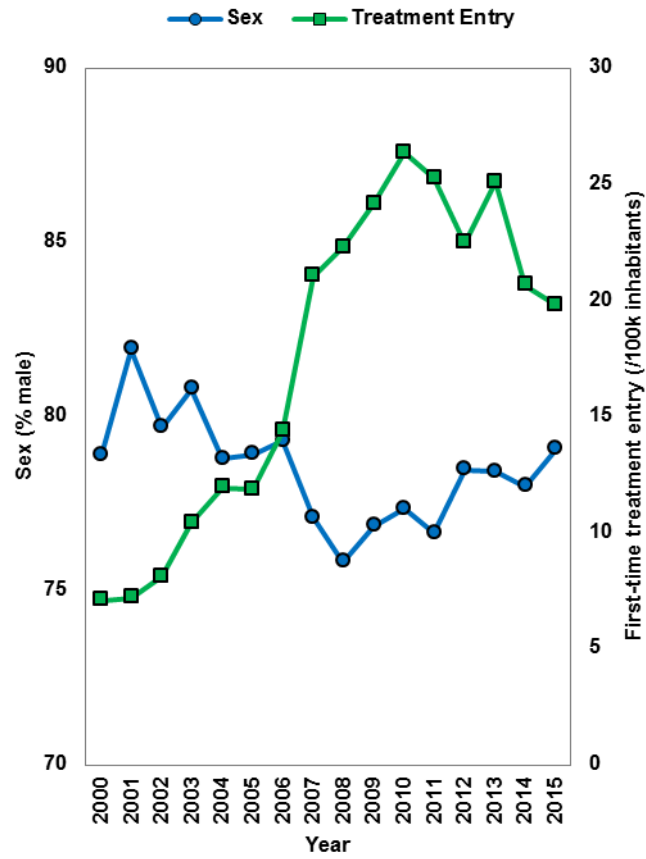
1. National Addiction Centre, Institute of Psychiatry, Psychology and Neuroscience, King's College London, United Kingdom
2. Clinical Psychopharmacology Unit, University College London, United Kingdom
3. Trimbos Institute, Netherlands Institute of Mental Health and Addiction, Utrecht, the Netherlands
4. Stichting Informatievoorziening Zorg, National Alcohol and Drugs Information System, Houten, the Netherlands
5. European Monitoring Centre for Drugs and Drug Addiction, Portugal
6. National Drug and Alcohol Research Centre, UNSW Australia, Sydney, NSW, Australia

*Address correspondence to:

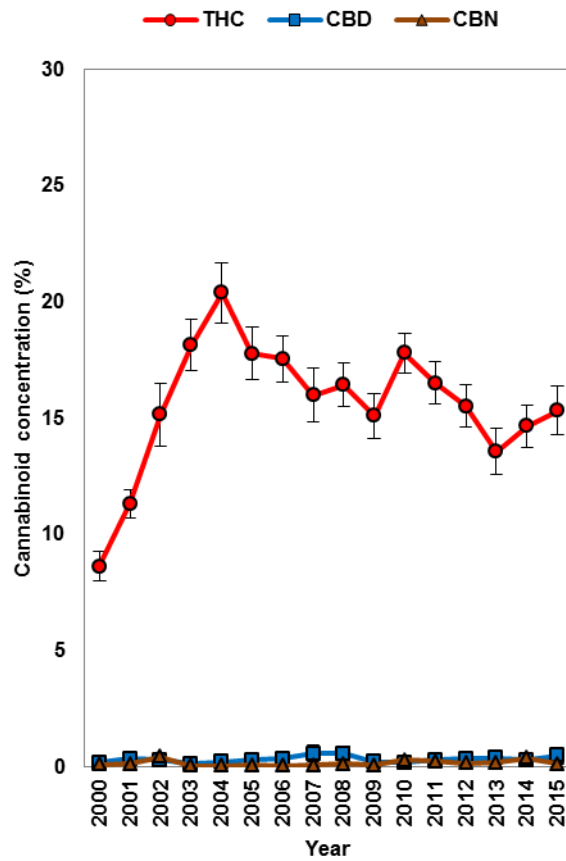
Tom P Freeman, E-mail: tom.freeman@kcl.ac.uk



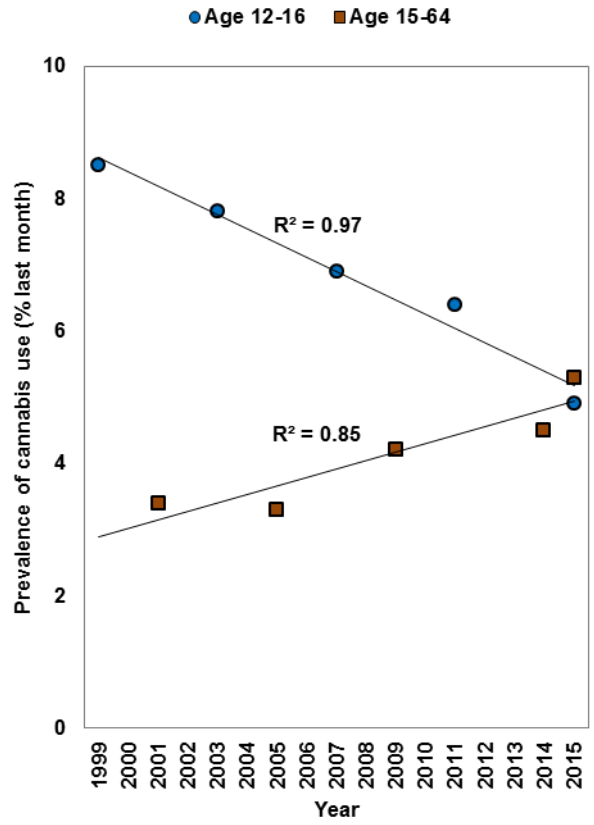
Supplementary Fig. S1. First-time cannabis admissions and client age at treatment entry, 2000-2015



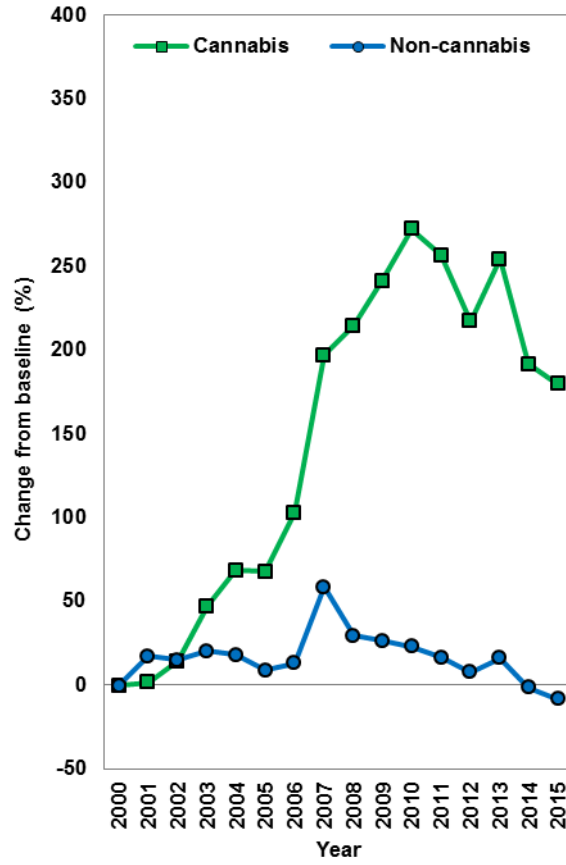
Supplementary Fig. S2. First-time cannabis admissions and client sex (% male), 2000-2015



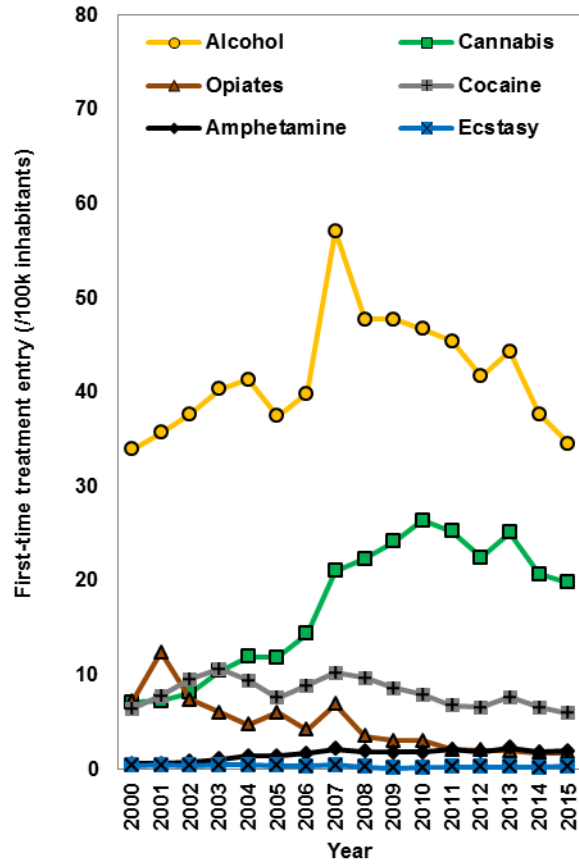
Supplementary Fig. S3. Mean (95% CI) concentrations of delta-9-tetrahydrocannabinol (THC), cannabidiol (CBD) and cannabinol (CBN) in domestic herbal cannabis, 2000-2015



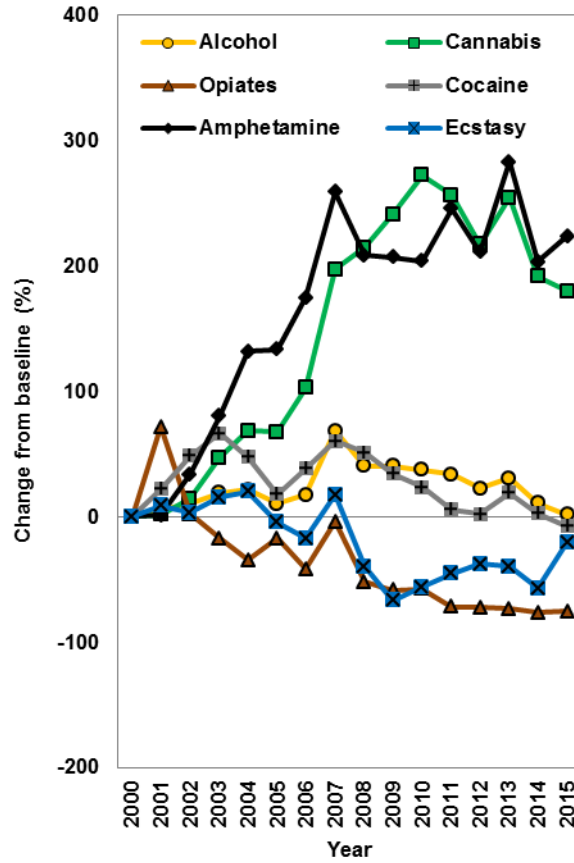
Supplementary Fig. S4. Prevalence of last month cannabis use among 12-16 year olds and 15-64 years, 1999-2015



Supplementary Fig. S5. First-time cannabis and non-cannabis admissions to drug treatment. Data shown are change from baseline (%), 2000-2015



Supplementary Fig. S6. Changes in first-time cannabis and non-cannabis admissions. Non-cannabis admissions are depicted separately for each drug (alcohol, opiates, cocaine, amphetamine, ecstasy), 2000-2015



Supplementary Fig. S7. Changes in first-time cannabis and non-cannabis admissions.
 Non-cannabis admissions are depicted separately for each drug (alcohol, opiates, cocaine, amphetamine, ecstasy). Data shown are change from baseline (%), 2000-2015

Supplementary Table S1: Unstandardised regression coefficients (95% CIs) for associations between delta-9-tetrahydrocannabinol (THC) concentrations in domestic herbal cannabis and first-time cannabis admissions to drug treatment, at time lags of 0-10 years

Lag (years)	df	Model 3b (adjusted for age, sex and alcohol admissions)				Model 3c (adjusted for age, sex and amphetamine admissions)				
		b	95% CI	z	p	b	95% CI	z	p	
0	1,969	0.002	(-0.017, 0.020)	0.156	0.8762	0.013	(-0.010, 0.037)	1.123	0.2616	
1	1,909	-0.048	(-0.068, -0.029)	-4.803	<0.0001	-0.098	(-0.121, -0.074)	-8.202	<0.0001	
2	1,843	-0.018	(-0.039, 0.003)	-1.691	0.0908	-0.057	(-0.082, -0.033)	-4.553	<0.0001	
3	1,782	-0.033	(-0.056, -0.009)	-2.670	0.0076	-0.043	(-0.071, -0.015)	-2.988	0.0028	
4	1,724	0.010	(-0.015, 0.035)	0.784	0.4329	0.024	(-0.002, 0.049)	1.826	0.0678	
5	1,659	0.073	(0.045, 0.100)	5.166	<0.0001	0.084	(0.057, 0.112)	5.966	<0.0001	
6	1,593	0.042	(0.020, 0.064)	3.712	0.0002	0.069	(0.047, 0.090)	6.213	<0.0001	
7	1,537	0.042	(0.021, 0.062)	4.014	0.0001	0.039	(0.019, 0.059)	3.919	0.0001	
8	1,477	0.004	(-0.012, 0.021)	0.548	0.5835	-0.018	(-0.037, 0.001)	-1.813	0.0698	
9	1,424	-0.008	(-0.024, 0.009)	-0.909	0.3635	-0.021	(-0.040, -0.003)	-2.287	0.0222	
10	1,366	0.002	(0.000, 0.003)	2.593	0.0095	0.013	(-0.000, 0.027)	1.943	0.0520	