

Supplementary information

Supplementary Table 1: Connectivity between amygdala and sACC at T3 and T4 timepoints

| | Peak voxel co- ordinate (x y z) | Peak z-value | Cluster size* | Corrected p- value |
|---------------------|------------------------------------|--------------|---------------|-----------------------|
| <u>Timepoint T3</u> | | | | |
| | -4 16 -22 | 6.3 | 875 | < .001 |
| <u>Timepoint T4</u> | | | | |
| | 6 28 -16 | 6.0 | 851 | < .001 |

*cluster-forming threshold set at .005

Supplementary Table 2: Regions that showed positive correlation between their connectivity with amygdala and NA at T4*

| | Peak voxel co- ordinate (x y z) | Peak z-value | Cluster size** | Corrected p- value |
|---------------------------|------------------------------------|--------------|----------------|-----------------------|
| Left orbitofrontal cortex | -26 28 -22 | 4.3 | 419 | < .001 |
| Left precuneus | -12 -58 52 | 3.5 | 213 | .03 |
| Right precuneus | 20 -66 48 | 4.0 | 449 | < .001 |

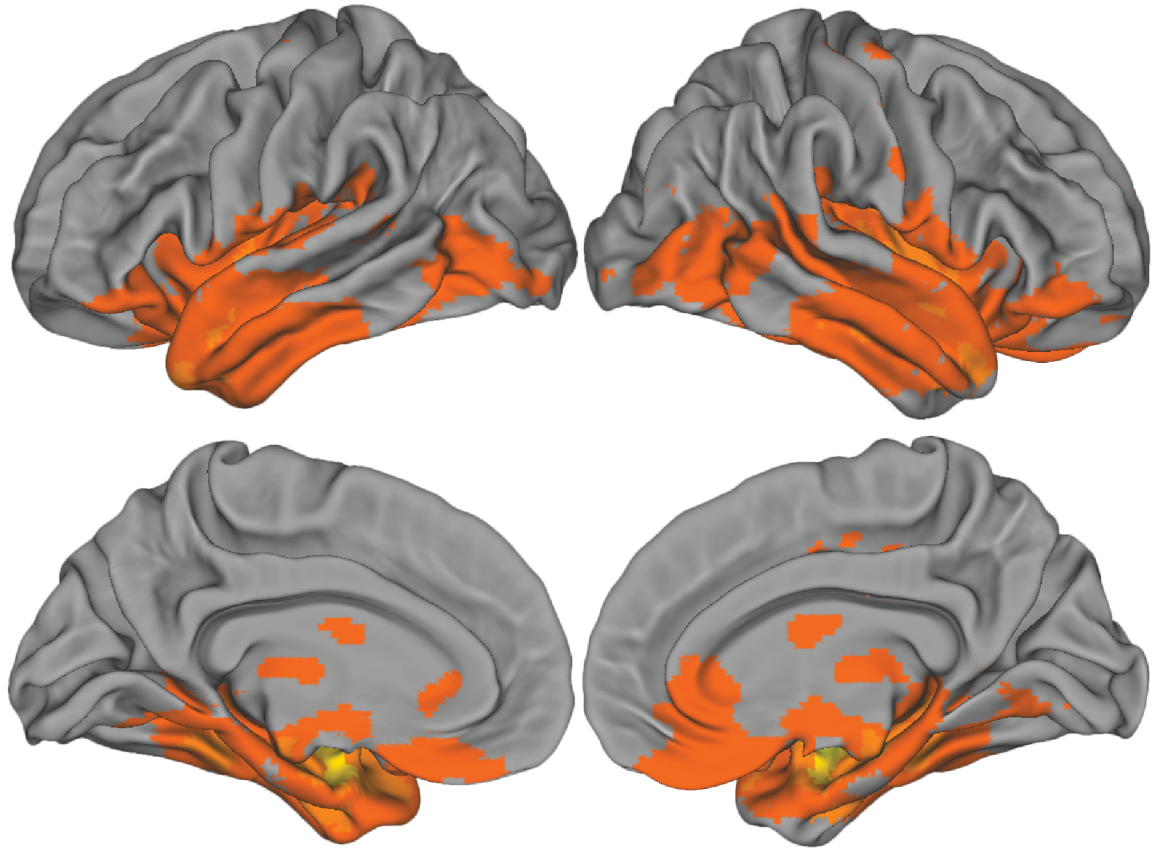
*no regions showed correlation between amygdala connectivity and NA at T3

**cluster-forming threshold set at .005

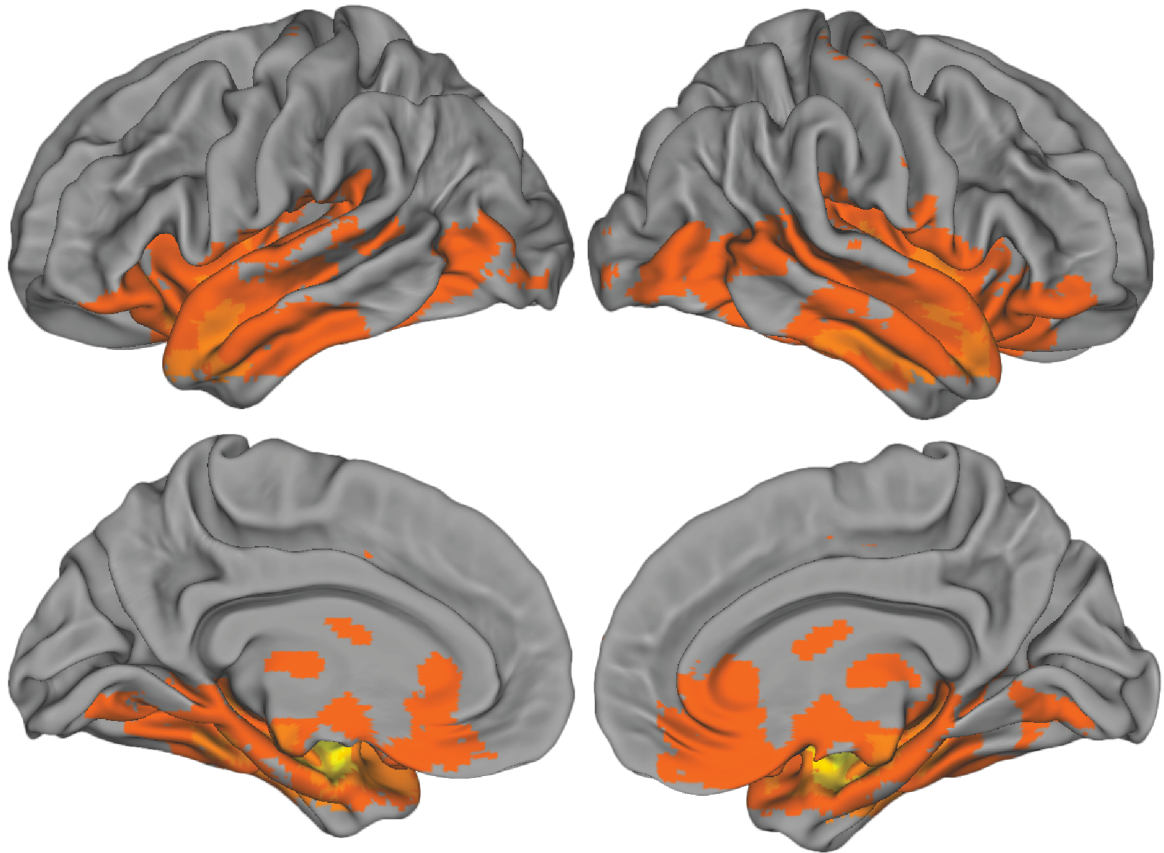


Supplementary Figure 1: The sACC mask was defined by the Brodmann Area-25 label in the WFU PickAtlas, and had a volume of 1,647 voxels (13,176 mm³).

T3 amygdala connectivity



T4 amygdala connectivity



Supplementary Figure 2: Whole-brain connectivity with the amygdala was similar at each time-point.