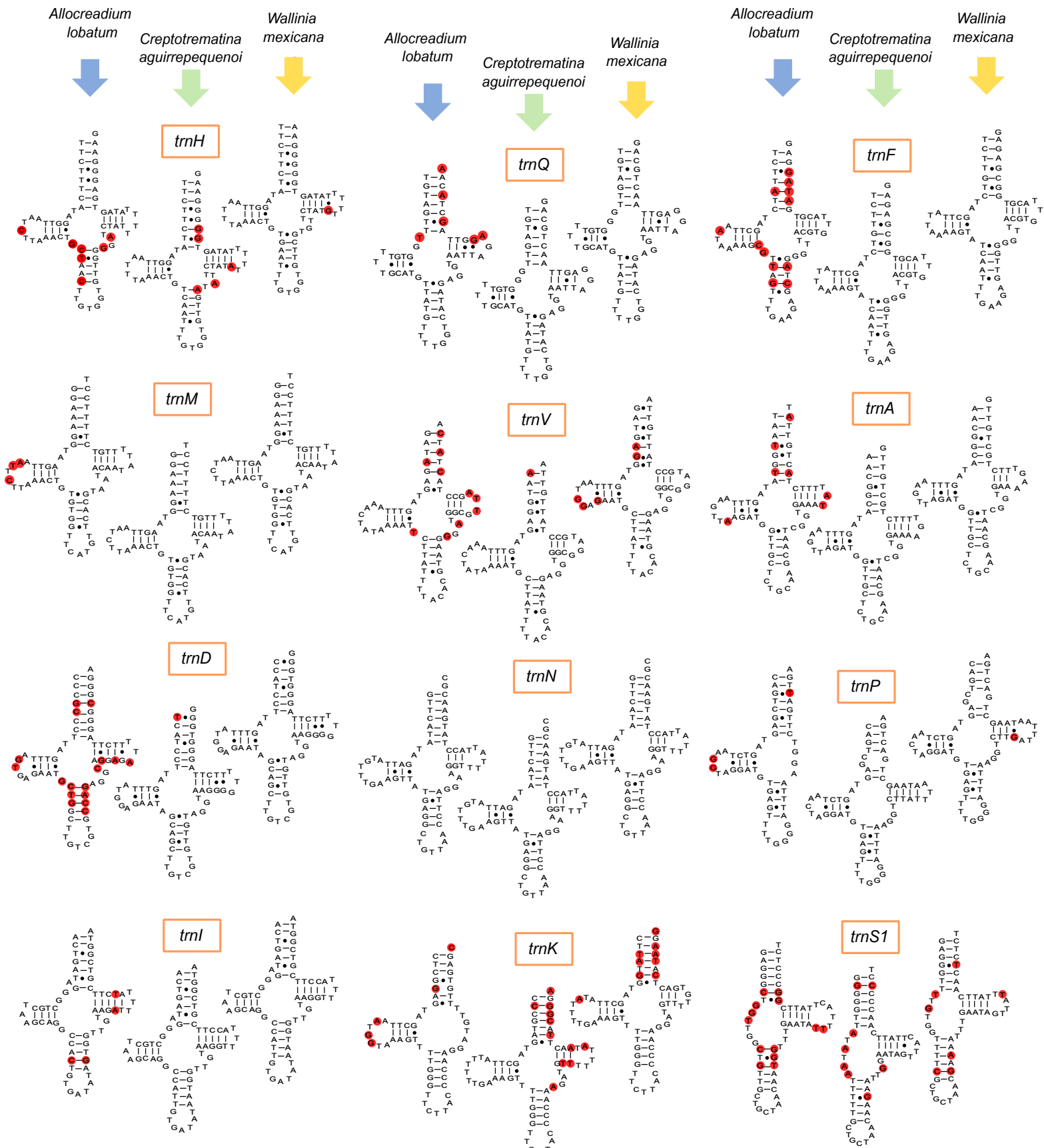


Fig S1. Secondary structure of tRNAs from the three allocreadiid species, listed in order of appearance within the mt-genome.

● Non-identical in the three allocreadiid species



*Allocreadium lobatum*

*Creptotrematina aguirrepequenoi*

*Wallinia mexicana*

*Allocreadium lobatum*

*Creptotrematina aguirrepequenoi*

*Wallinia mexicana*

*Allocreadium lobatum*

*Creptotrematina aguirrepequenoi*

*Wallinia mexicana*

*trnW*

*trnT*

*trnC*

*trnY*

*trnL1*

*trnS2*

*trnL2*

*trnR*

*trnE*

*trnG*

● Non-identical in the three allocreadiid species

