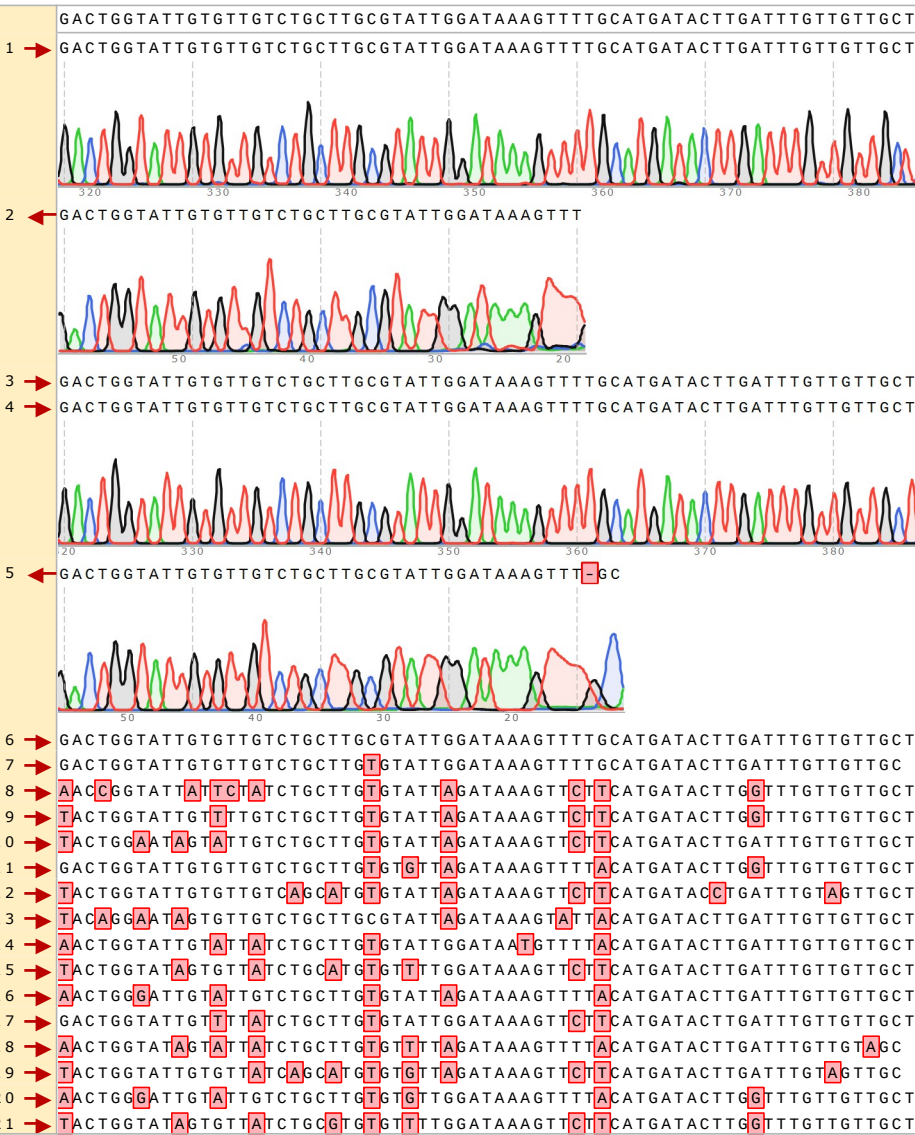


GACTGGTATTGTGTTGCTGCTTGCCTATTGGATAAAAGTTTTGCATGATACTTGATTGTTGTTGCT 3 '
CTGACCATAACACAACAGACGAACGCATAACCTATTTCAAACGTACTATGAACTAAACAACAACGA 5 '



Original Sequence: Case cyst_Cox1_JB3+JB4.5_396bp.dna

- 1: Case cyst_COX1_JB3_Original Sequencing Chromatograms ➡
409 bases
14 .. 384 (1 mismatch)
- 2: Case cyst_COX1_JB4.5_Original Sequencing Chromatograms ⬅
403 bases
19 .. 388
- 3: Case proglottids_COX1_JB3+JB4.5_396bp ➡
396 bases
1 .. 396
- 4: Case proglottids_COX1_JB3_Original Sequencing Chromatograms ➡
401 bases
17 .. 386
- 5: Case proglottids_COX1_JB4.5_Original Sequencing Chromatograms ⬅
403 bases
13 .. 384 (1 gap)
- 6: Taenia saginata_COX1_RefSeq=NC_009938.1 ➡
1620 bases
733 .. 1128 (1 mismatch)
- 7: Taenia asiatica_COX1_RefSeq=NC_004826.2 ➡
1620 bases
733 .. 1127 (11 mismatches)
- 8: Taenia solium_COX1_RefSeq=NC_004022.1 ➡
1620 bases
733 .. 1128 (50 mismatches)
- 9: Taenia arctos_COX1_RefSeq=NC_024590.1 ➡
1620 bases
733 .. 1128 (46 mismatches)
- 10: Taenia crassiceps_COX1_RefSeq=NC_002547.1 ➡
1614 bases
733 .. 1128 (45 mismatches, 2 gaps)
- 11: Taenia crocutae_COX1_RefSeq=NC_024591.1 ➡
1620 bases
733 .. 1128 (22 mismatches)
- 12: Taenia hydatigena_COX1_RefSeq=NC_012896.1 ➡
1620 bases
733 .. 1128 (48 mismatches)
- 13: Taenia laticollis_COX1_RefSeq=NC_021140.1 ➡
1620 bases
733 .. 1128 (48 mismatches)
- 14: Taenia madoquae_COX1_RefSeq=NC_021139.1 ➡
1623 bases
733 .. 1128 (30 mismatches)
- 15: Taenia martis_COX1_RefSeq=NC_020153.1 ➡
1620 bases
733 .. 1128 (49 mismatches)
- 16: Taenia multiceps_COX1_RefSeq=NC_012894.1 ➡
1623 bases
733 .. 1128 (26 mismatches)
- 17: Taenia ovis_COX1_RefSeq=NC_021138.1 ➡
1620 bases
733 .. 1128 (42 mismatches)
- 18: Taenia pisiformis_COX1_RefSeq=NC_013844.1 ➡
1620 bases
733 .. 1127 (45 mismatches)
- 19: Taenia regis_COX1_RefSeq=NC_024589.1 ➡
1620 bases
733 .. 1127 (52 mismatches)
- 20: Taenia serialis_COX1_RefSeq=NC_021457.1 ➡
1623 bases
733 .. 1128 (27 mismatches)
- 21: Taenia twitchelli_COX1_RefSeq=NC_021093.1 ➡
1620 bases
733 .. 1128 (56 mismatches)