

**Supplementary Table S1:** Information on the faecal samples collected from New Zealand skinks and geckos including the number of samples collected from each species, location of collection, and whether the host was held in captivity or sampled in the wild. Numbers in bold show the total number of samples collected for each species of lizard.

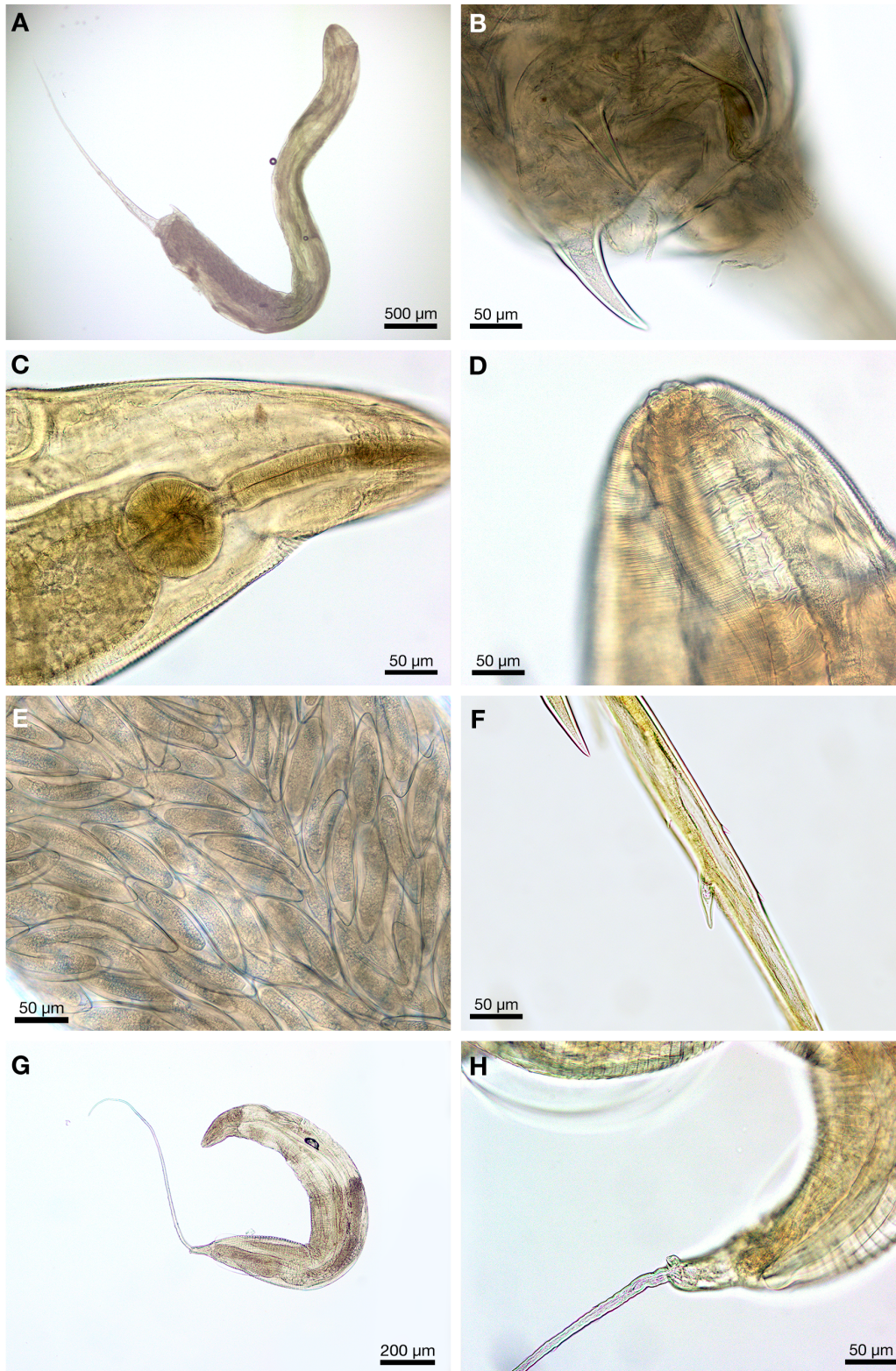
Species	No. of samples	Location of collection (or origin of captive lizards)	Captive (C), wild (W)
<b>Skinks:</b>			
<i>Oligosoma aeneum</i>	29, 11, 24 <b>(64)</b>	Limestone Is. / Great Barrier Is. / Auckland	W
<i>Oligosoma grande</i>	3, 6, 21 <b>(30)</b>	Central Otago / Macraes flat	W
<i>Oligosoma infrapunctatum</i>	<b>4</b>	Stephens Is.	W
<i>Oligosoma</i> aff. <i>infrapunctatum</i> 'Crenulate'	<b>5</b>	West Coast	W
<i>Oligosoma lineocellatum</i>	3, 16 <b>(19)</b>	Stephens Is. / Canterbury	W
<i>Oligosoma maccanni</i>	<b>97</b>	Macraes flat	W
<i>Oligosoma moco</i>	20, 18 <b>(38)</b>	Limestone Is. / Great Barrier Is.	W
<i>Oligosoma polychroma</i>	4, 1, 25, 26, 5 <b>(61)</b>	Stephens Is. / Maud Is. / Macraes flat / Wellington / Christchurch	W
<i>Oligosoma ornatum</i>	8, 2, 5, 1 <b>(16)</b>	Great Barrier Is., Wellington, Auckland, Limestone Is.	W
<i>Oligosoma otagense</i>	3, 16 <b>(19)</b>	Central Otago / Macraes flat	C / W
<i>Oligosoma smithi</i>	6, 5, 8, 10 <b>29</b>	Limestone Is. / Whangarei / Gisborne / Motouki Is.	W
<i>Oligosoma suteri</i>	<b>8</b>	Rangitoto Is.	W
<i>Oligosoma whitakeri</i>	<b>11</b>	Wellington	C

<i>Oligosoma zelandicum</i>	4	Stephens Is.	W
-----------------------------	---	--------------	---

**Geckos:**

<i>Dactylocnemis pacificus</i>	8	Great Barrier Is.	W
<i>Mokopiriakau granulatus</i>	1, 1, 1 (3)	Taranaki / Limestone Is. / Great Barrier Is.	C / W / W
<i>Mokopirirakau sp.</i> 'Southern North Island'	8	Wellington	W
<i>Naultinus elegans</i>	4	Upper North Island	W
<i>Naultinus punctatus</i>	2	Wellington	C
<i>Naultinus gemmeus</i>	90	Dunedin	W
<i>Naultinus manukanus</i>	3	Stephens Is.	W
<i>Naultinus rudis</i>	1	Canterbury	C
<i>Tukutuke rakiurae</i>	8	Stewart Island	W
<i>Woodworthia cf. brunnea</i>	67	Canterbury	W
<i>Woodworthia chrysosiretica</i>	9	New Plymouth	W
<i>Woodworthia</i> 'Central Otago'	28	Central Otago	W
<i>Woodworthia</i> 'Otago large'	43	Macraes flat	W
<i>Woodworthia maculata</i>	3, 11, 1, 10, 28 (53)	Stephens Is. / Maud Is. / Crusoe Is. / Great Barrier Is. / Wellington	W

**Figure S1:** Series of images showing some of the key features of *Skrjabinodon* nematodes. A- adult female worm, B- three spines (or prongs) found at the base of the body near the tail, C- head of the worm showing the oesophagus and bulb, D- head of worm showing the lips, E- eggs, F- tail spines (left corner is part of the body spines), G- male morph 1, H- side view of male showing one of the caudal papilla.





**Figure S2:** Series of images showing some of the key features of nematodes recovered from New Zealand skink hosts. A- adult female worm, B- tail region, C- head region of male worm, D- head region of female showing vagina, E- eggs, F- spines on tail, G- male worm, H- male showing caudal papillae.

