

## Reassessment of an introduced cheetah *Acinonyx jubatus* population in Matusadona National Park, Zimbabwe

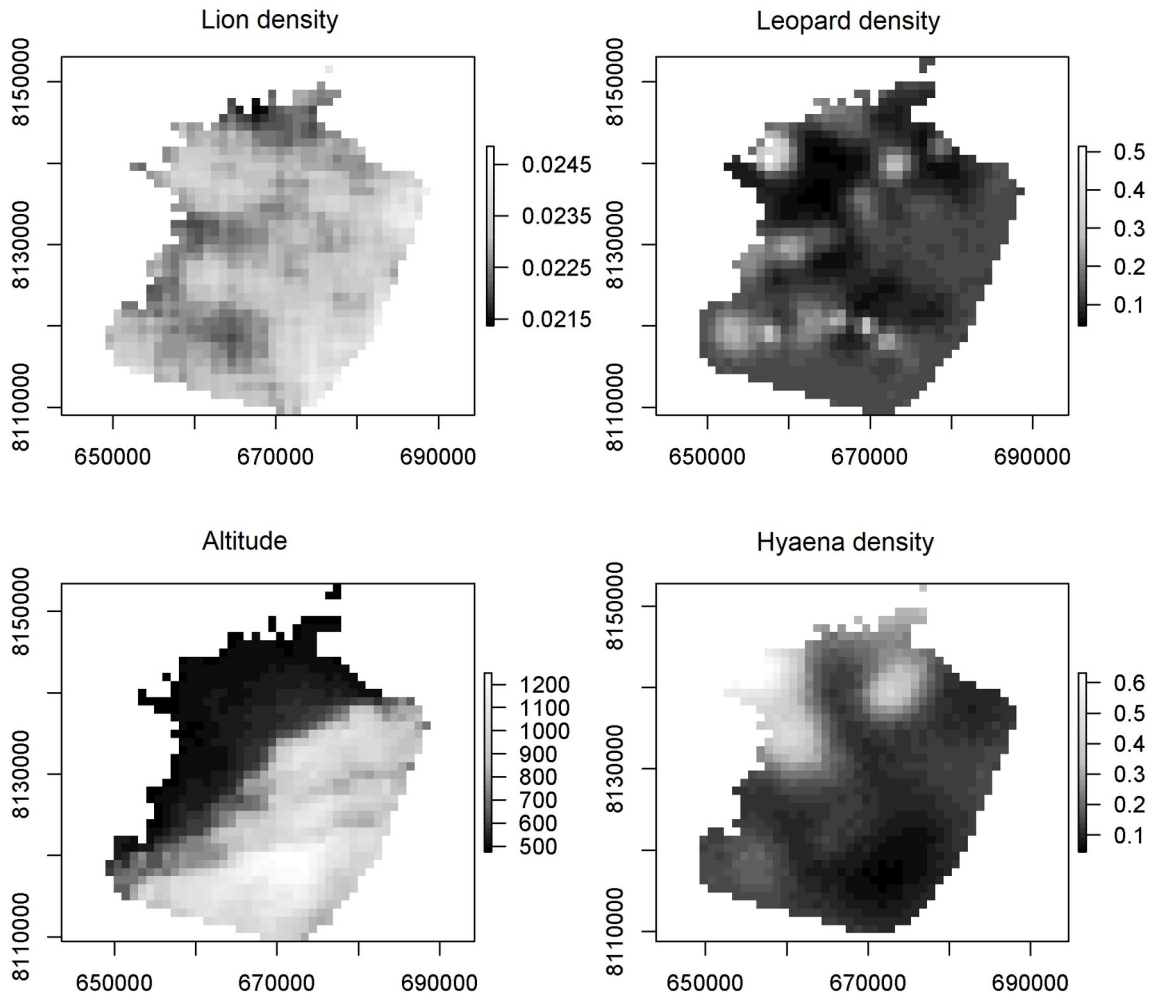
ESTHER VAN DER MEER, LARA L. SOUSA and ANDREW J. LOVERIDGE

SUPPLEMENTARY TABLE 1 Mean observed cheetah spoor density, standard deviation (SD), confidence intervals (CI) and resulting mean, minimum and maximum cheetah population size on the valley floor of Matusadona National Park in 2013 and 2016.

	2013	2016
Mean observed cheetah spoor density	1.49	1.78
SD	2.06	3.39
CI	1.43	1.92
Mean cheetah population size valley floor (400 km <sup>2</sup> )	1.83	2.19
Min.	0.08	0.00
Max.	3.59	4.54

SUPPLEMENTARY TABLE 2 Approximate significance of smooth terms (s) in the model of the probability of the occurrence of the cheetah in Matusadona National Park.

	edf	Ref.df	$\chi^2$	P
s(lion density)	1	1	5.74	0.02
s(leopard density)	3.33	4.13	11.43	0.02
s(altitude)	1	1	11.91	0.00
s(hyaena density)	3.02	3.74	3.59	0.38



SUPPLEMENTARY FIG. 1 Maps of the four potential explanatory factors (lion density, leopard density, altitude and hyaena density) for cheetah occurrence in Matusadona National Park