

Spatial patterns of primate hunting in riverine communities in Central Amazonia

PRISCILA MARIA PEREIRA, JOÃO VALSECCHI and HELDER QUEIROZ

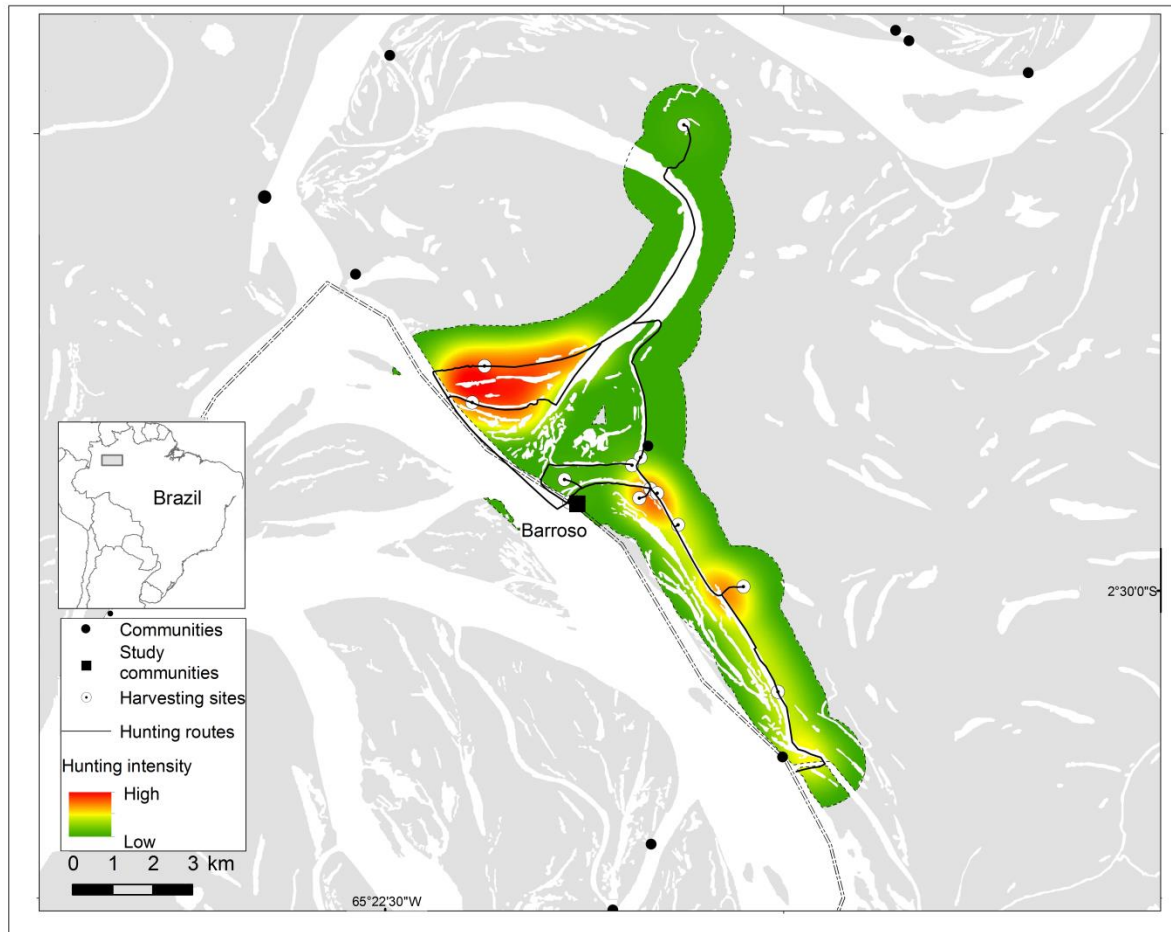


FIG. S1 Area used by the Barroso community (Fig. 1) for hunting primates in várzea environment.

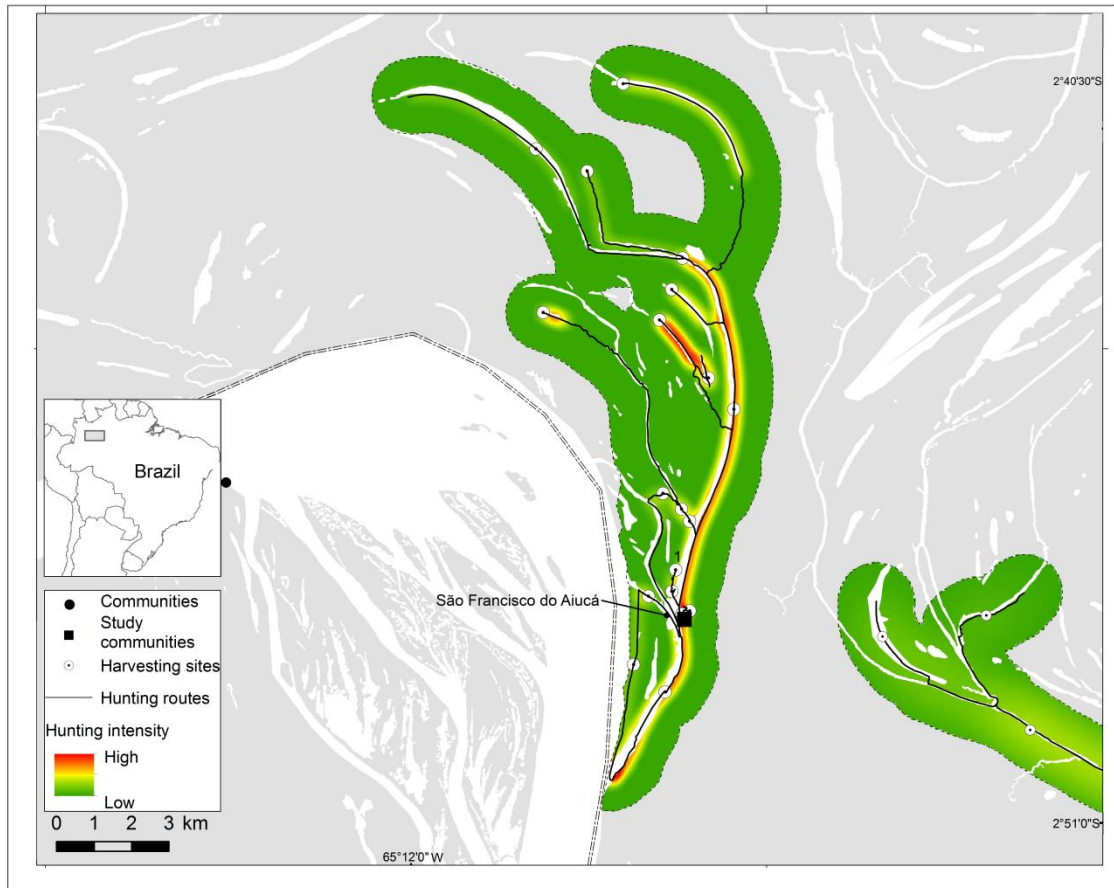


FIG. S2 Area used by the São Francisco do Aiucá community (Fig. 1) for hunting primates in várzea environment.

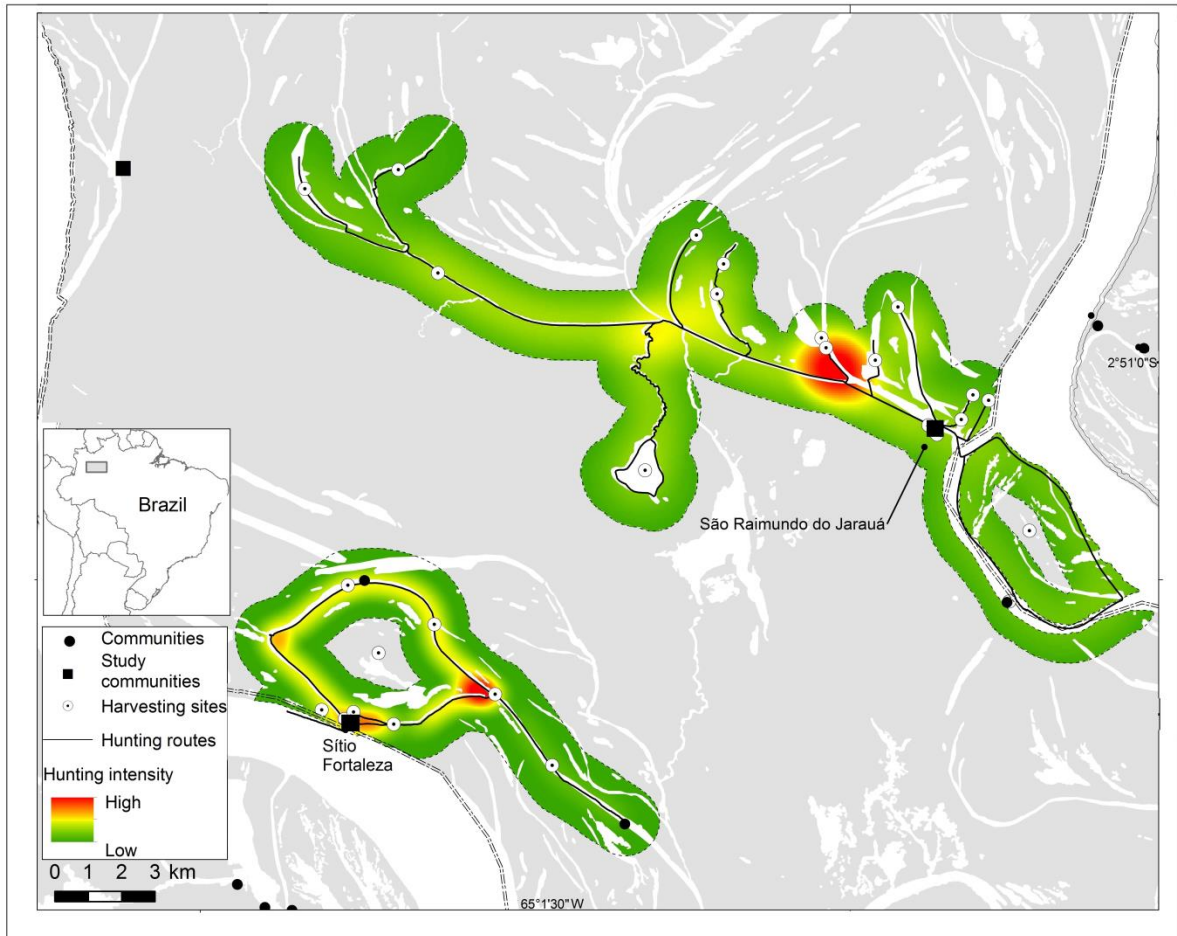


FIG. S3 Area used by the Sítio Fortaleza and São Raimundo do Jarauá communities (Fig. 1) for hunting primates in várzea environment.

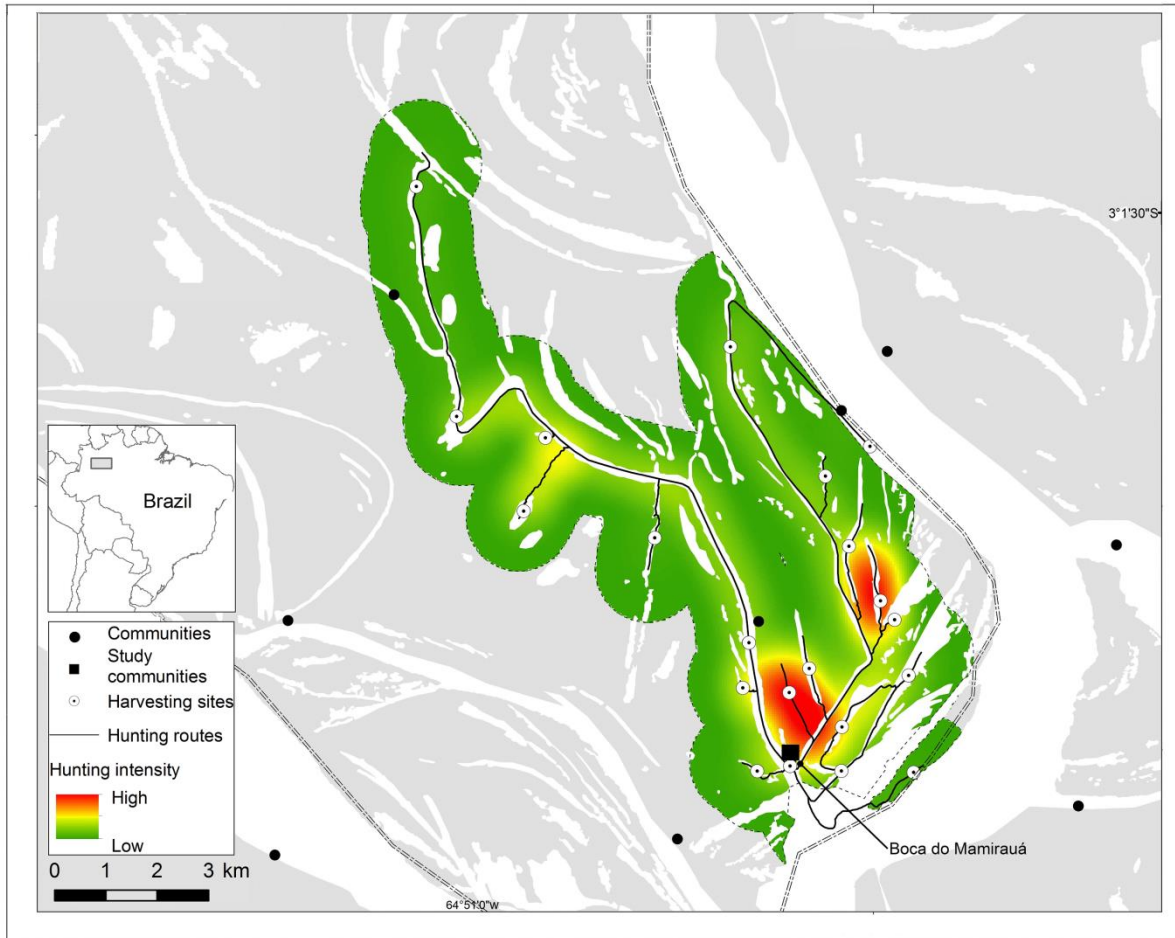


FIG. S4 Area used by the Boca do Mamirauá community (Fig. 1) for hunting primates in várzea environment.

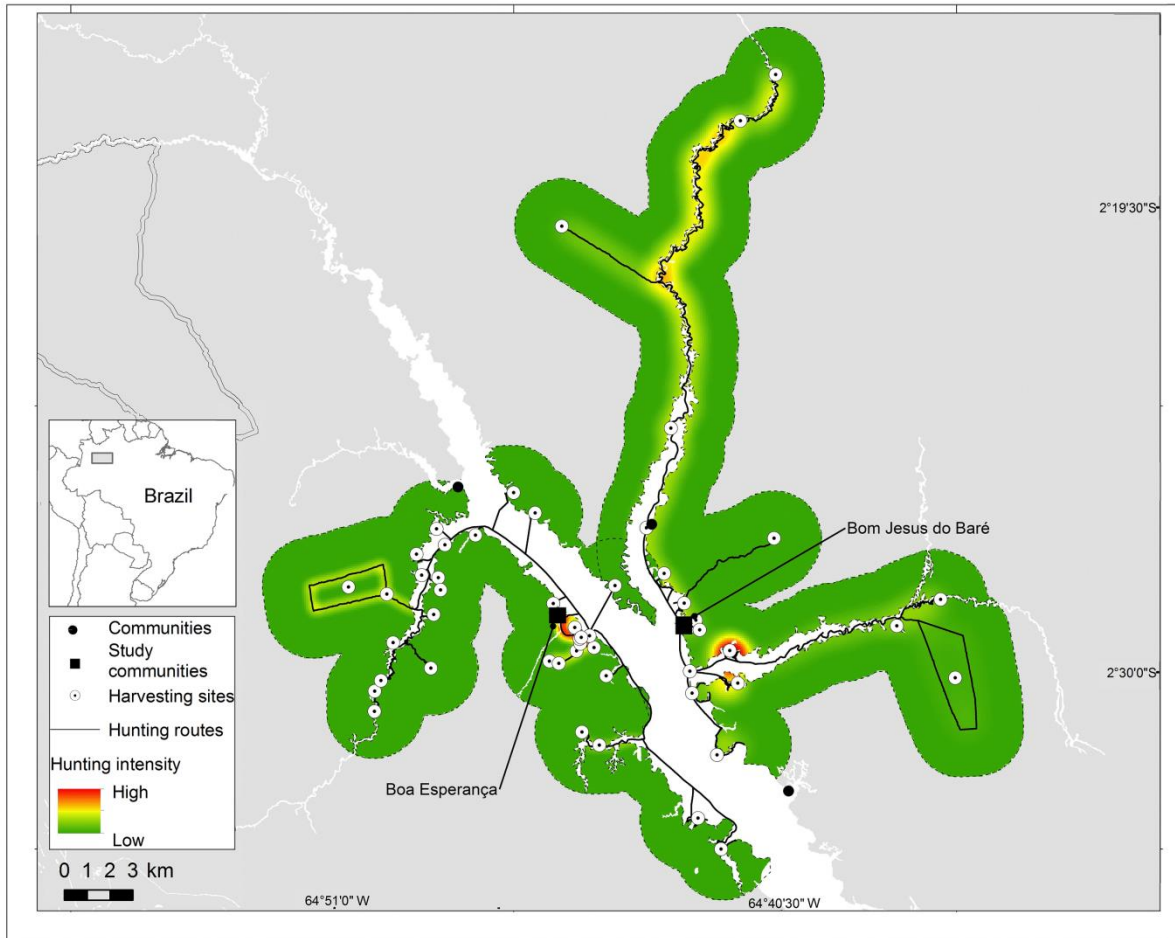


FIG. S5 Area used by the Boa Esperança and Bom Jesus do Baré communities (Fig. 1) for hunting primates in Paleovárzea environment.

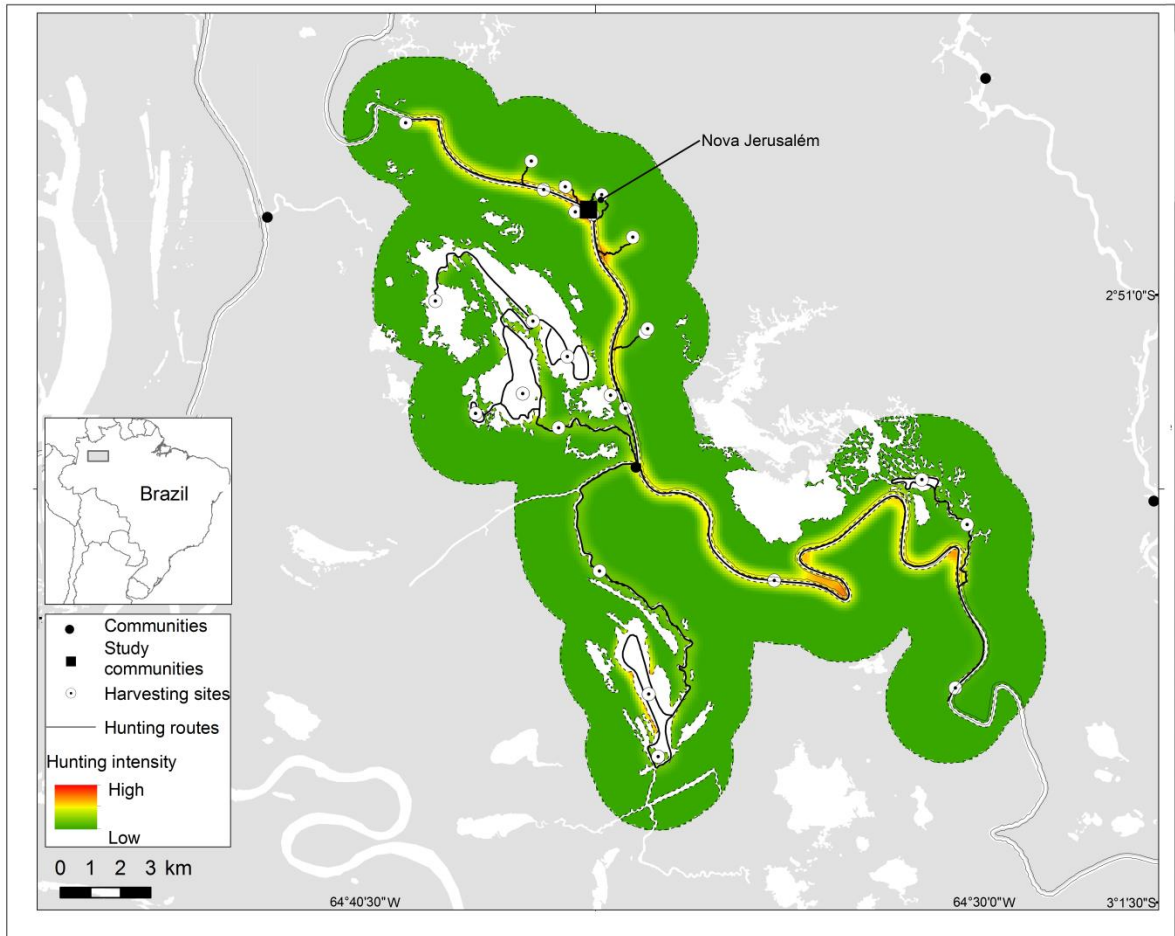


FIG. S6 Area used by the Nova Jerusalém community (Fig. 1) for hunting primates in Paleovárzea environment.