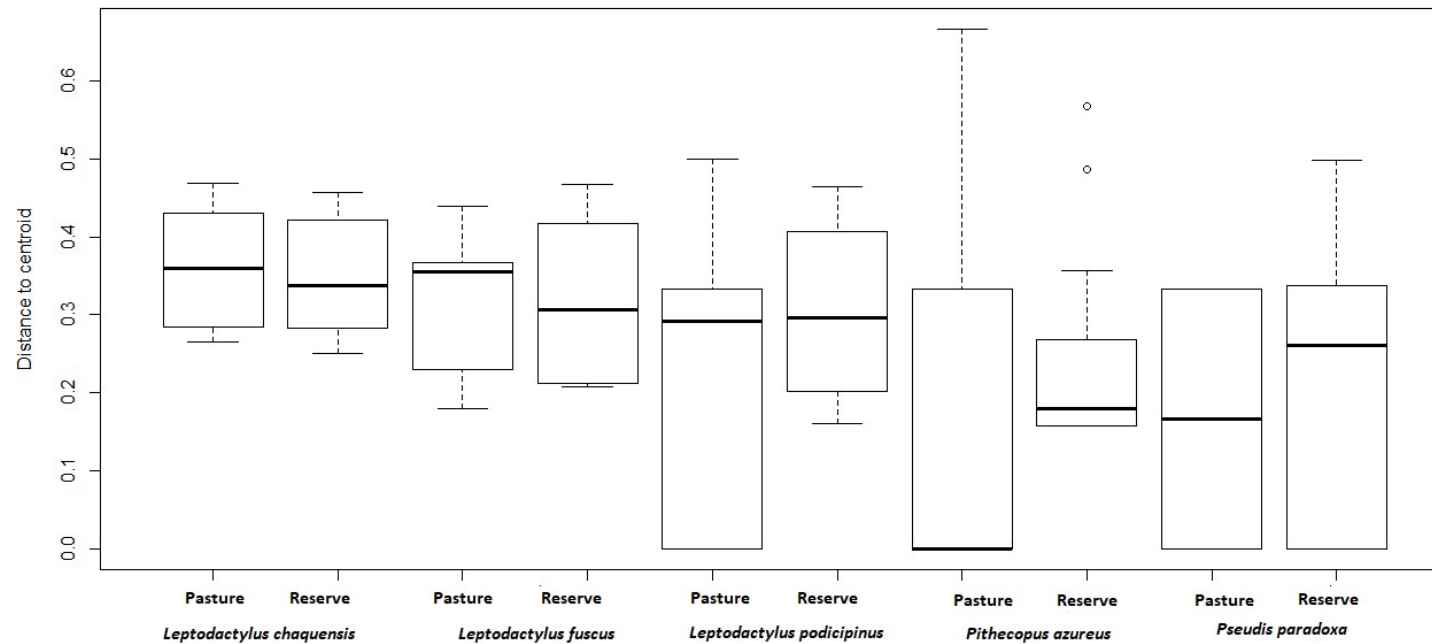


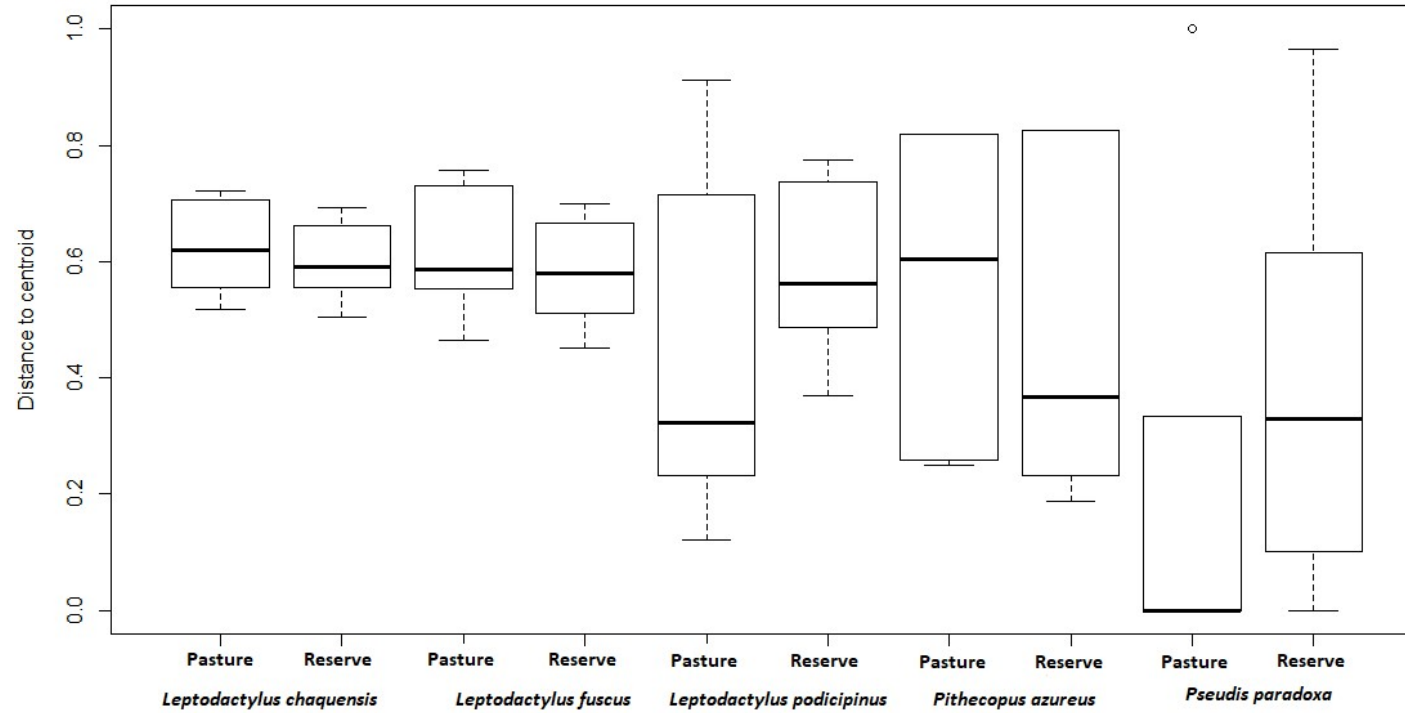
Biological drivers of individual-based anuran-parasite networks under contrasting environmental conditions

Karla Magalhães Campião, Wesley Dáttilo

Supplementary Figure S1. Median and confidence intervals (quartiles) of the variance in the similarity among parasite infracommunities of five anuran species from different habitat types (pasture and natural reserve). The beta diversity index was calculated considering parasite species composition with the Jaccard similarity index.



Supplementary Figure S2. Median and confidence intervals (quartiles) of the variance in the similarity among parasite infracommunities of five anuran species from different habitat types (pasture and natural reserve). The beta diversity index was calculated considering parasite species composition with the Sorensen similarity index.



Supplementary Table S1. Ecological attributes of individual-based networks of five anurans species and their parasites collected in contrasting environments.

Anuran species	Study site	Parasite richness	Host individuals	Interaction Diversity	Specialization	Nestedness	Modularity
<i>Leptodactylus chaquensis</i>	pasture	8	10	2.30	0.86	31.89	0.11
<i>Leptodactylus chaquensis</i>	reserve	9	10	2.55	0.70	45.07	0.08
<i>Leptodactylus fuscus</i>	pasture	7	17	2.55	0.74	44.64	0.06
<i>Leptodactylus fuscus</i>	reserve	6	8	1.97	0.68	54.38	0.04
<i>Leptodactylus podicipinus</i>	pasture	6	15	2.64	0.76	19.12	0.16
<i>Leptodactylus podicipinus</i>	reserve	6	12	2.27	0.78	26.70	0.10
<i>Pithecopus azureus</i>	pasture	6	6	1.64	1.00	40.04	0.04
<i>Pithecopus azureus</i>	reserve	5	8	1.95	1.00	29.82	0.04
<i>Pseudis paradoxa</i>	pasture	2	10	1.93	1.00	11.87	0.02
<i>Pseudis paradoxa</i>	reserve	5	11	1.53	0.95	13.84	0.56

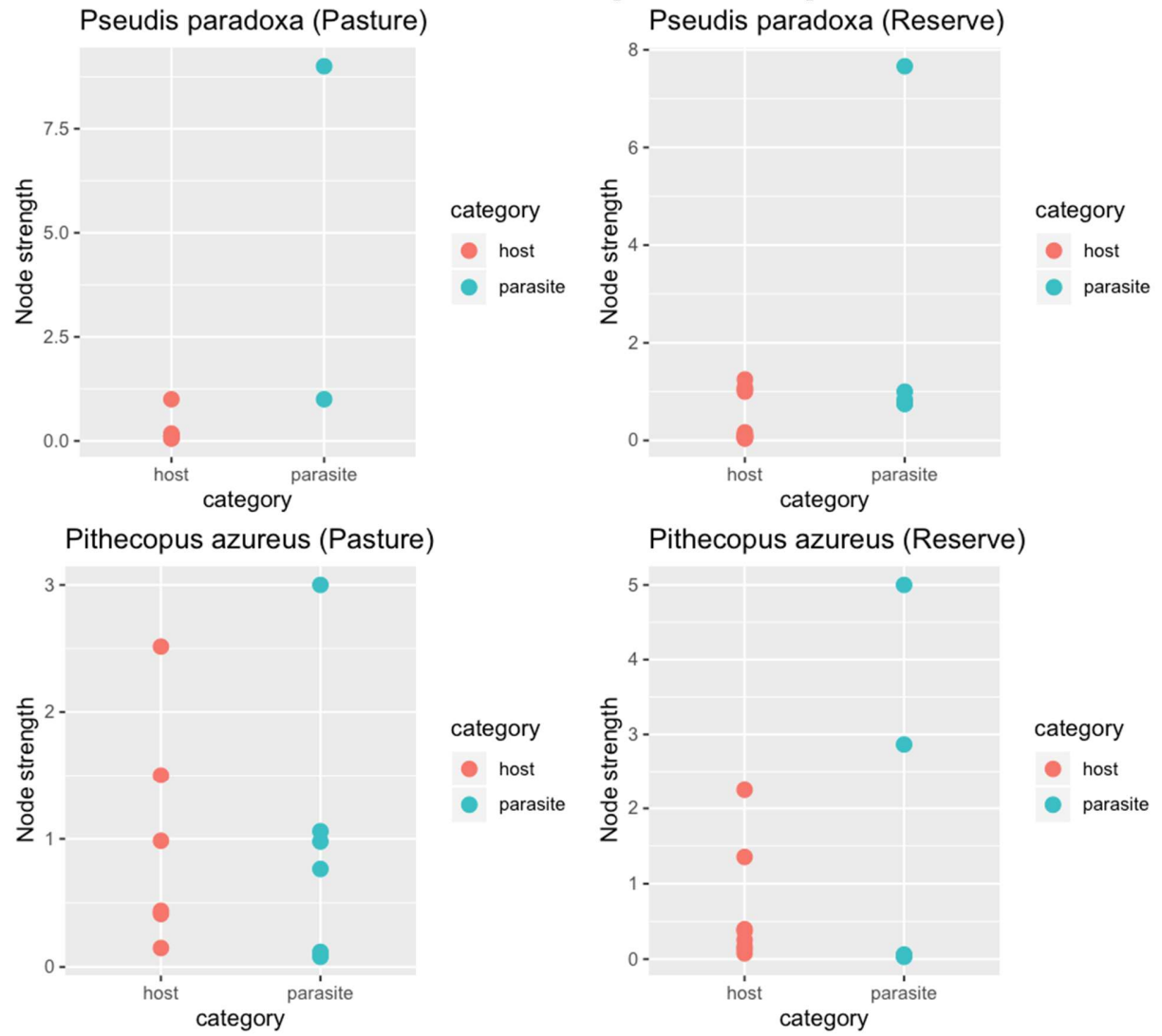
Supplementary Table S2. Interaction strength of parasite taxa in individual-based networks of five anurans species and their parasites collected in contrasting environments.

Anuran	Location	
	pasture	reserve
<i>Leptodactylus chaquensis</i>		
<i>Aplectana sp1</i>	0.49	0.13
<i>Brevimulticaecum sp1</i>	0.58	2.36
<i>Cosmocerca podicipinus</i>	3.00	1.22
<i>Diplostomulum sp1</i>	0.76	-
<i>Neascus sp1</i>	1.00	-
<i>Physaloptera sp1</i>	0.55	0.06
<i>Physalopteroides venancioi</i>	0.63	2.18
<i>Physocephalus sp1</i>	-	1.36
<i>Physocephalus sp3</i>	-	1.16
<i>Porrocaecum sp1</i>	-	0.22
<i>Schrankiana formosula</i>	2.99	1.30
<i>Leptodactylus fuscus</i>		
<i>Aplectana sp1</i>	3.00	-
<i>Brevimulticaecum sp1</i>	-	3.73
<i>Cosmocerca parva</i>	4.41	-
<i>Physaloptera sp1</i>	1.00	-
<i>Physalopteroides venancioi</i>	1.36	0.48
<i>Physocephalus sp1</i>	-	0.02

Anuran	Location	
Parasite species		
<i>Physocephalus sp2</i>	1.71	-
<i>Physocephalus sp3</i>	0.69	-
<i>Porrocaecum sp1</i>	-	0.49
<i>Raillietnema minor</i>	4.83	-
<i>Schrankiana formosula</i>	-	2.02
<i>Schrankiana fuscus</i>	-	1.25
<i>Leptodactylus podicipinus</i>		
<i>Aplectana sp1</i>	1.52	1.02
<i>Brevimulticaecum sp1</i>	0.69	0.28
<i>Cosmocerca podicipinus</i>	10.39	3.70
<i>Diplostomulum sp1</i>	0.84	-
<i>Physalopteroides venancioi</i>	1.00	1.00
<i>Physocephalus sp1</i>	0.56	2.30
<i>Physocephalus sp2</i>	-	3.71
<i>Pithecopus azureus</i>		
<i>Brevimulticaecum sp1</i>	0.76	0.06
<i>Cosmocerca podicipinus</i>	0.08	-
<i>Cosmocercella cf phyllomedusae</i>	0.12	-
<i>Cosmocerca parva</i>	-	0.04
<i>Diplostomulum sp1</i>	0.98	-
<i>Porrocaecum sp1</i>	-	0.03
<i>Raillietnema minor</i>	3.00	5.00

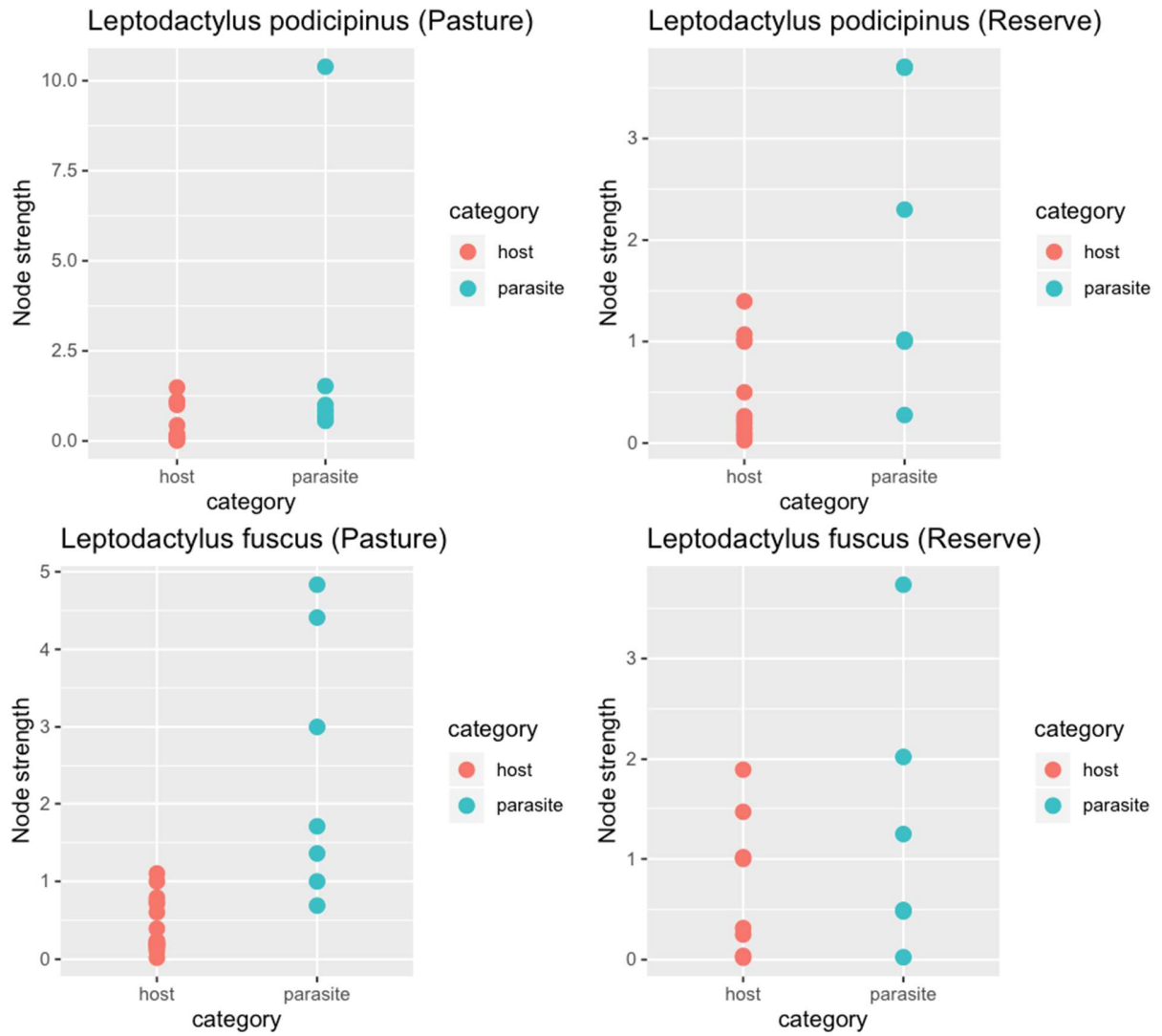
Anuran	Location	
Parasite species		
<i>Schrankiana formosula</i>	1.06	2.86
<i>Pseudis paradoxa</i>		
<i>Brevimulticaecum sp1</i>	1.00	1.00
<i>Diplostomulum sp1</i>	-	0.84
<i>Glypthelmins palmipedis</i>	9.00	7.66
<i>Physocephalus sp1</i>	-	0.75
<i>Physocephalus sp3</i>	-	0.75

Supplementary Figure S3. Interaction strength of anuran hosts and the associated parasite taxa in individual-based networks of five anurans species and their parasites



Cont.

Supplementary Figure S3. Interaction strength of anuran hosts and the associated parasite taxa in individual-based networks of five anurans species and their parasites



Cont.

Supplementary Figure S3. Interaction strength of anuran hosts and the associated parasite taxa in individual-based networks of five anurans species and their parasites

