

## Supplemental Material

Mass balance of Antarctic ice sheet 1992–2016: reconciling results from GRACE gravimetry with ICESat, ERS1/2 and Envisat altimetry. Zwally HJ, Robbins JW, Luthcke SB, Loomis BD, Rémy F (2021). *Journal of Glaciology* 1–27. <https://doi.org/10.1017/jog.2021.8>

Digital data for the gridded  $dH/dt$  data used in Figures 9 and S1 and Figures 16 and S2 is available along with digital copies of all the figures at:

<https://earth.gsfc.nasa.gov/cryo/data/polar-altimetry/antarctic-mass-balance-1992-2016>

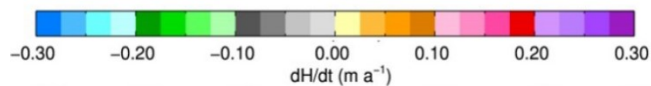
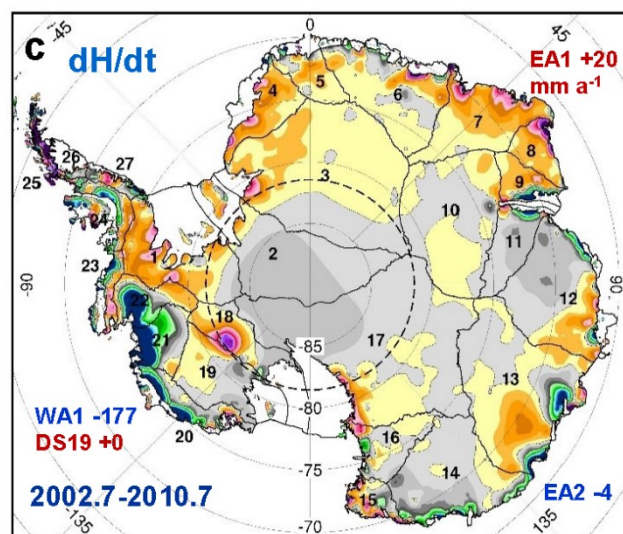
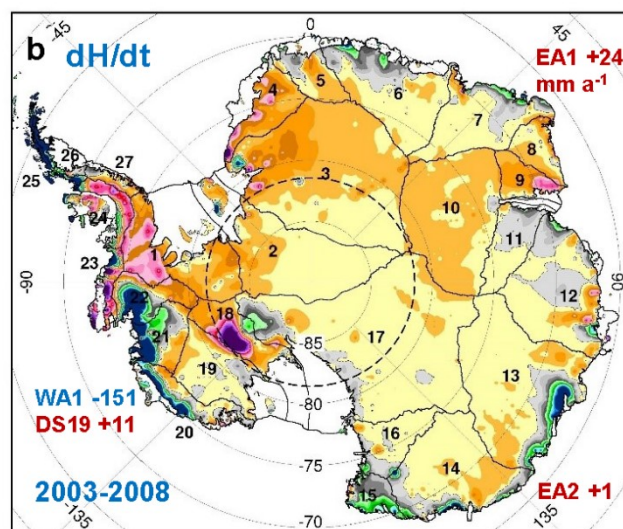
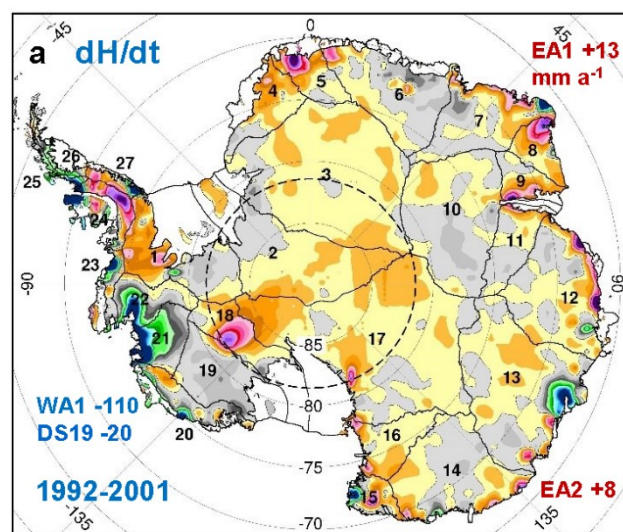
Additional information is available at:

<https://icesat4.gsfc.nasa.gov/>

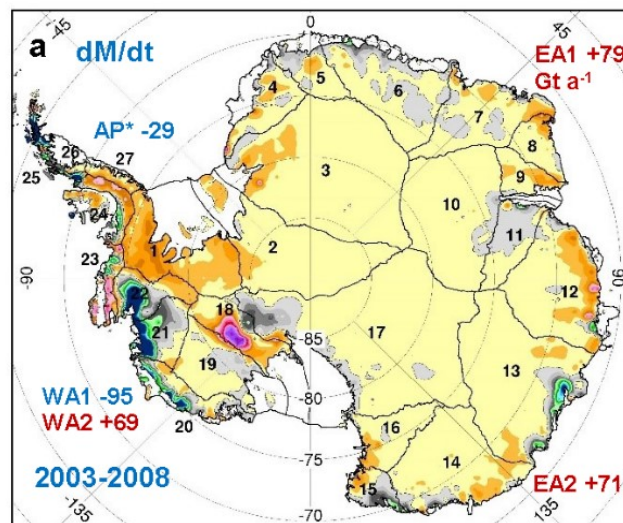
on Missions, Radar Altimetry Data, and

Cryospheric Data

- [Greenland Mass Balance - 2003-2007](#)
- [Antarctic and Greenland Drainage Systems](#)
- [ICESat Elevations and Slope Grids](#)
- [Antarctic Ice Velocity Maps](#)
- [Publications](#)



**Fig. S1.** Maps of  $dH/dt$  in in multi-color scale alternate to red-blue scale in Figure 9. (a) for 1992-2001 from ERS1/ 2, (b) for 2003-2008 from ICESat, and (c) for 2002.7-2010.7 from Envisat showing regional  $dH/dt$  for areas of common coverage. (Areas south of  $81.6^\circ$  coverage of ERS and Envisat and south of  $86^\circ$  of ICESat are interpolated in images.)



**Fig. S2.** ICESat Maps for 2003-2008 in multi-color scale alternate to red-blue scale in Figure 16. a)  $dM/dt$ , b)  $dM_d/dt$ , and c)  $dM_a/dt$  using  $dB/dt$  equal to  $IvinsdB/dt$  lue +  $\delta B_{adj}$ . Rates are linear terms of LQS fits at year 2006.0. \*Rates for AP from average-linear-change analysis.

