

Intermittent structural weakening and accelerations of the Thwaites Glacier Tongue between 2000 and 2018.

B.W.J. Miles^{1*}, C.R. Stokes¹, A. Jenkins³, J.R. Jordan², S.S.R. Jamieson¹, G.H. Gudmundsson²

Supplementary Figures

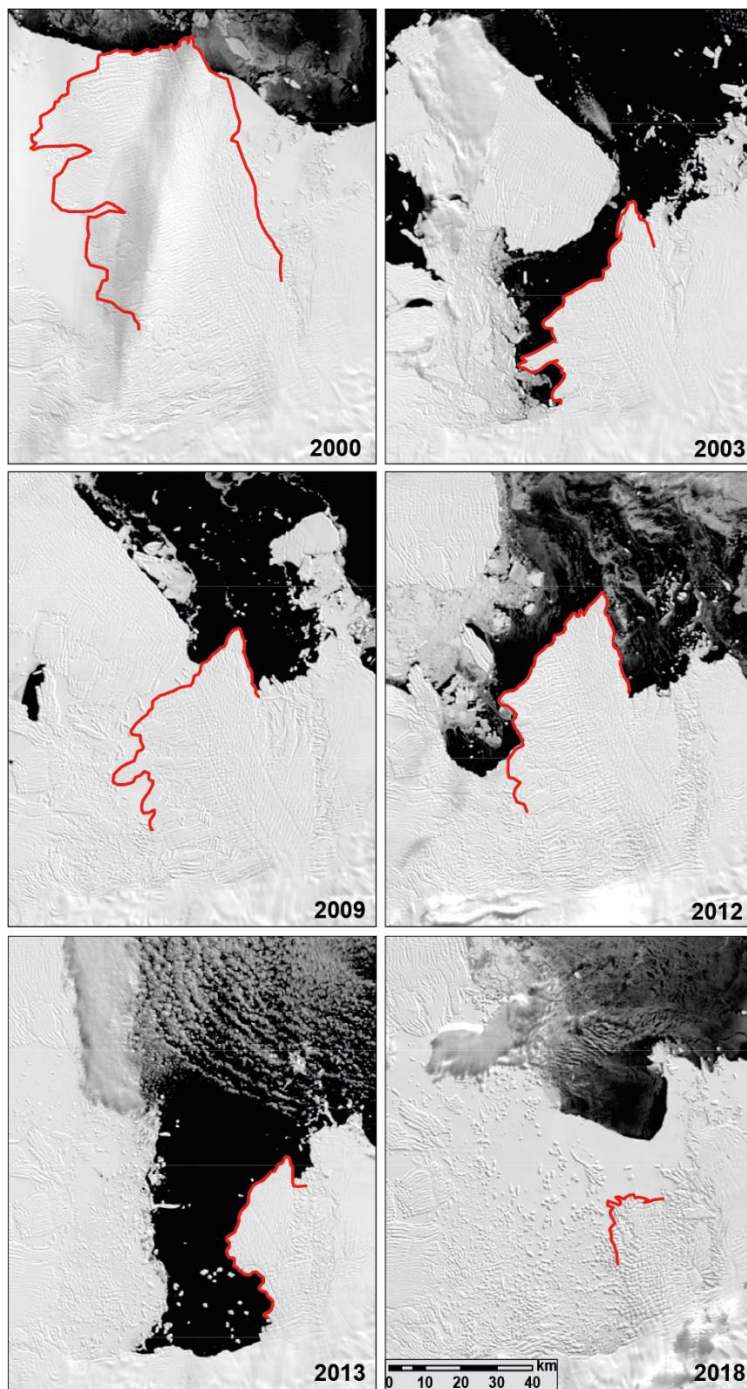


Figure S1: Examples of ice-front mapping (red lines) of the Thwaites Ice Tongue using MODIS imagery.