

Area and Mass Changes of Siachen Glacier (East Karakoram)

**Vibhor Agarwal^{1,2}, Tobias Bolch^{3,4}, Tajdarul H. Syed¹, Tino Pieczonka⁴, Tazio Strozzi⁵ and
Rishabh Nagaich⁶**

¹Department of Applied Geology, Indian Institute of Technology (ISM), Dhanbad, India

²Division of Geodetic Science, School of Earth Sciences, The Ohio State University, Columbus,
OH 43210, USA

³Department of Geography, University of Zurich, 8057 Zürich, Switzerland

⁴Institute for Cartography, Technische Universität Dresden, 01069 Dresden, Germany

⁵Gamma Remote Sensing, Gümligen, Switzerland

⁶Department of Environmental Science and Engineering, Indian Institute of Technology (ISM),
Dhanbad, India

Correspondence: Tajdarul H. Syed <tsyed.ismu@gmail.com>

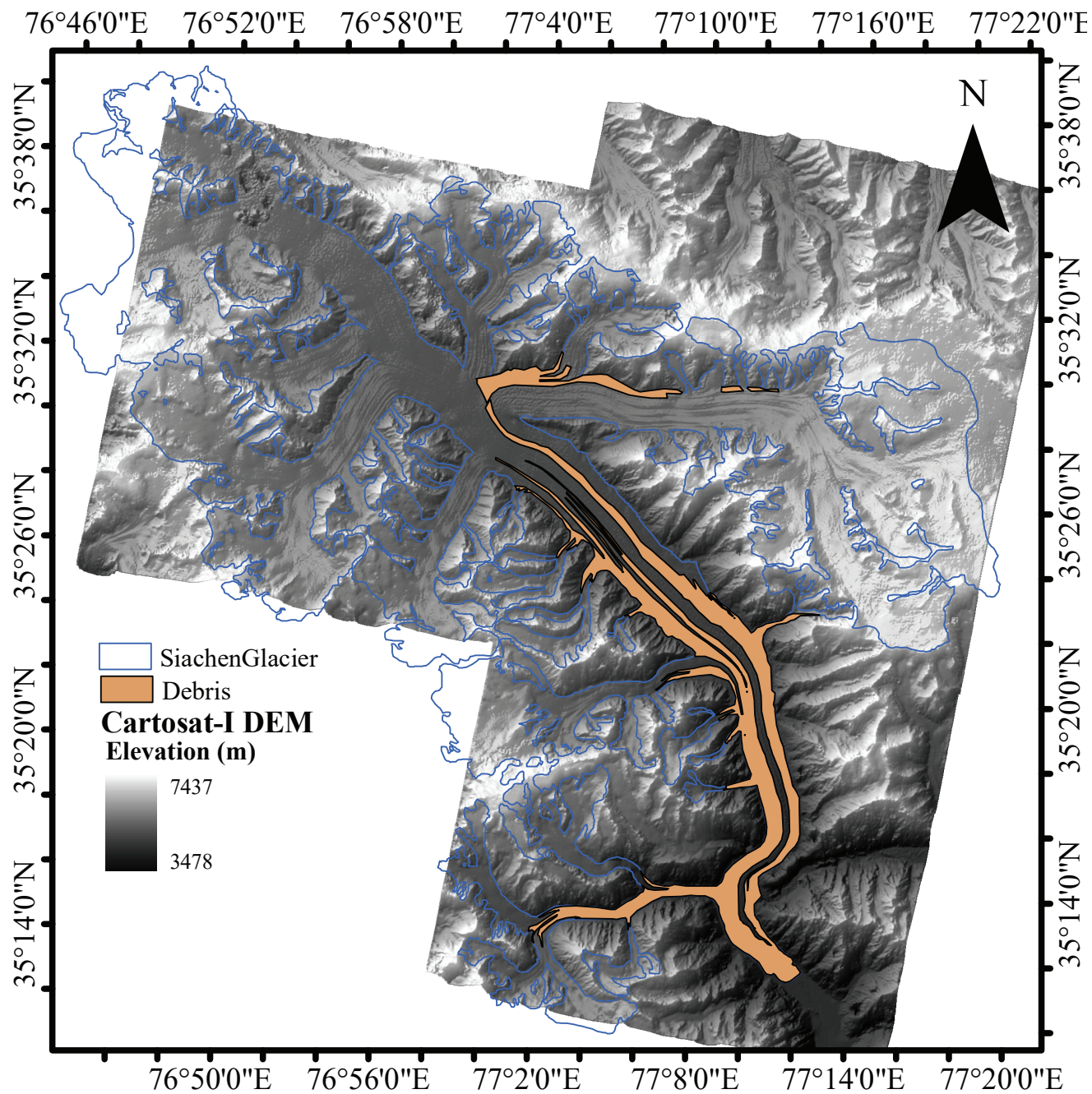


Figure S1: Hillshaded image of Siachen Glacier generated using from Cartosat-I stereo data using PCI GeomaticaOrthoEngine 10.2. Also shown are the total areal extent and the debris-covered portion of the glacier.

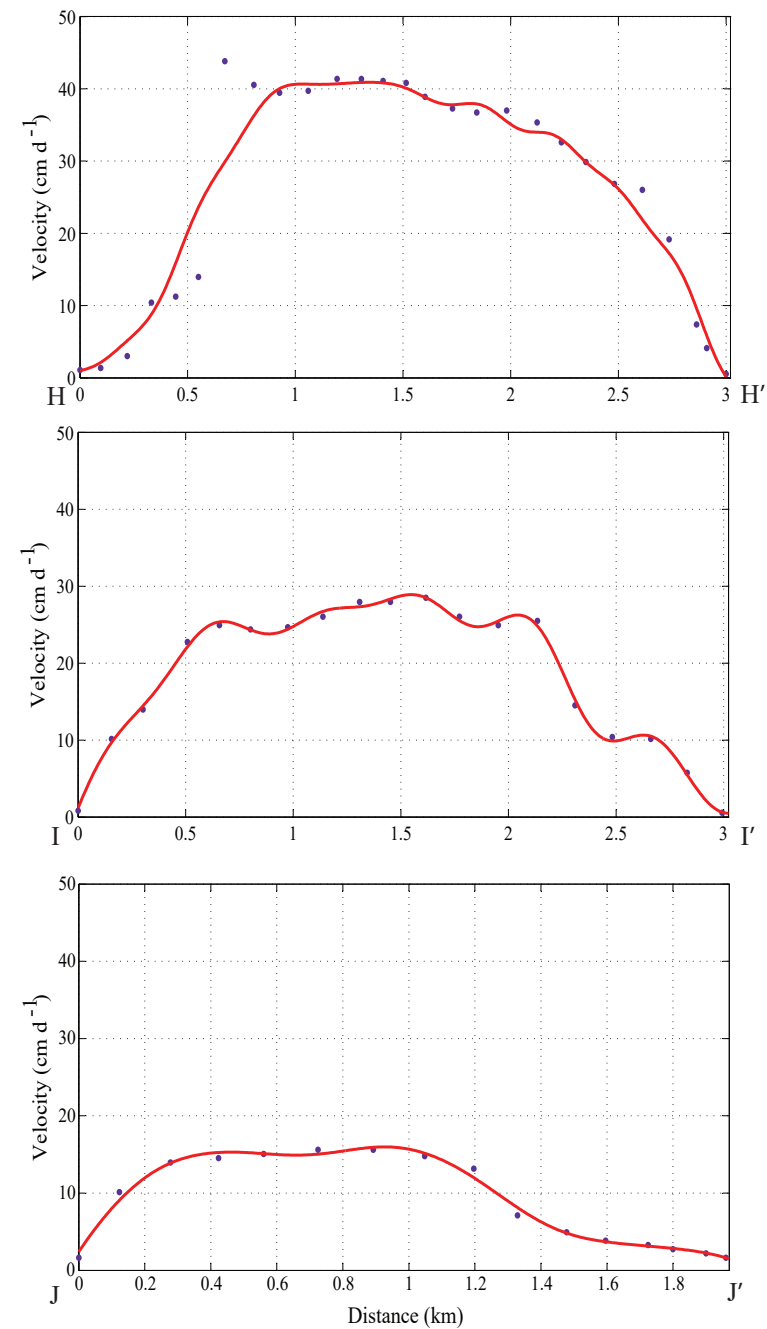


Figure S2: Velocity patterns along profiles HH', II' and JJ' for the period 11 December 2008 - 26 January 2009. The curves have been smoothed using a moving average filter with a span of 5 observations.