

Fig. S1. Head and pterothorax of *Acanthoberothena cuspis* gen. et sp. nov. (holotype, AMNH Bu-SY24) in mid-Cretaceous amber from northern Myanmar. (a) head and right antenna; (b) antenna; (c) thorax, left lateral view. Abbreviations: mps, mesoprescutum; mss, mesoscutum; mst, mesoscutellum; pd, pedicel; pn, pronotum; sc, scape. Scale bars represent 0.5 mm.

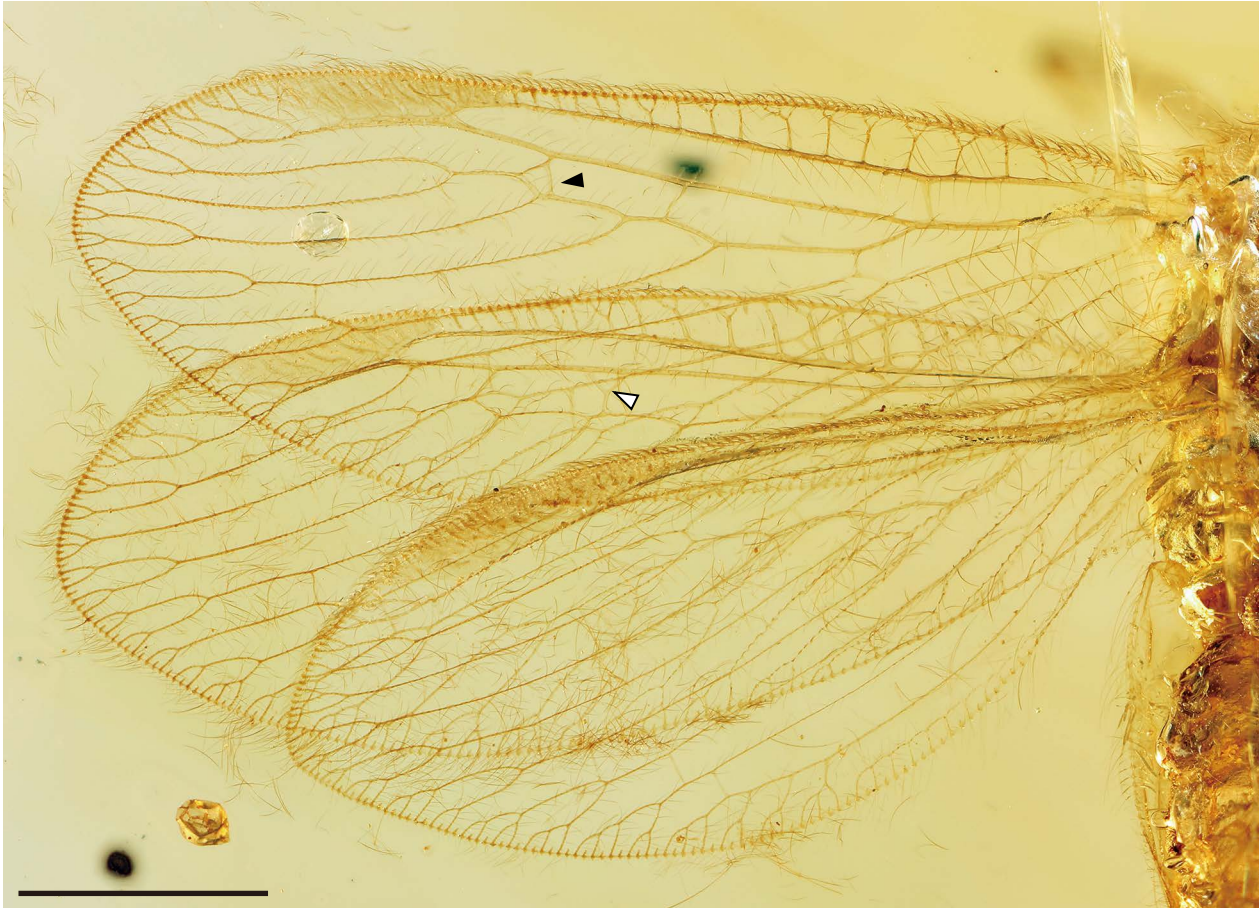


Fig. S2. Wing venation of *Acanthoberotha cuspis* gen. et sp. nov. (holotype, AMNH Bu-SY24) in mid-Cretaceous amber from northern Myanmar. Photo of right lateral view, open arrow showing branched 2ra-rp crossvein in left forewing and arrow showing branched 3ra-rp crossvein in right forewing. Scale bars represent 0.5 mm.

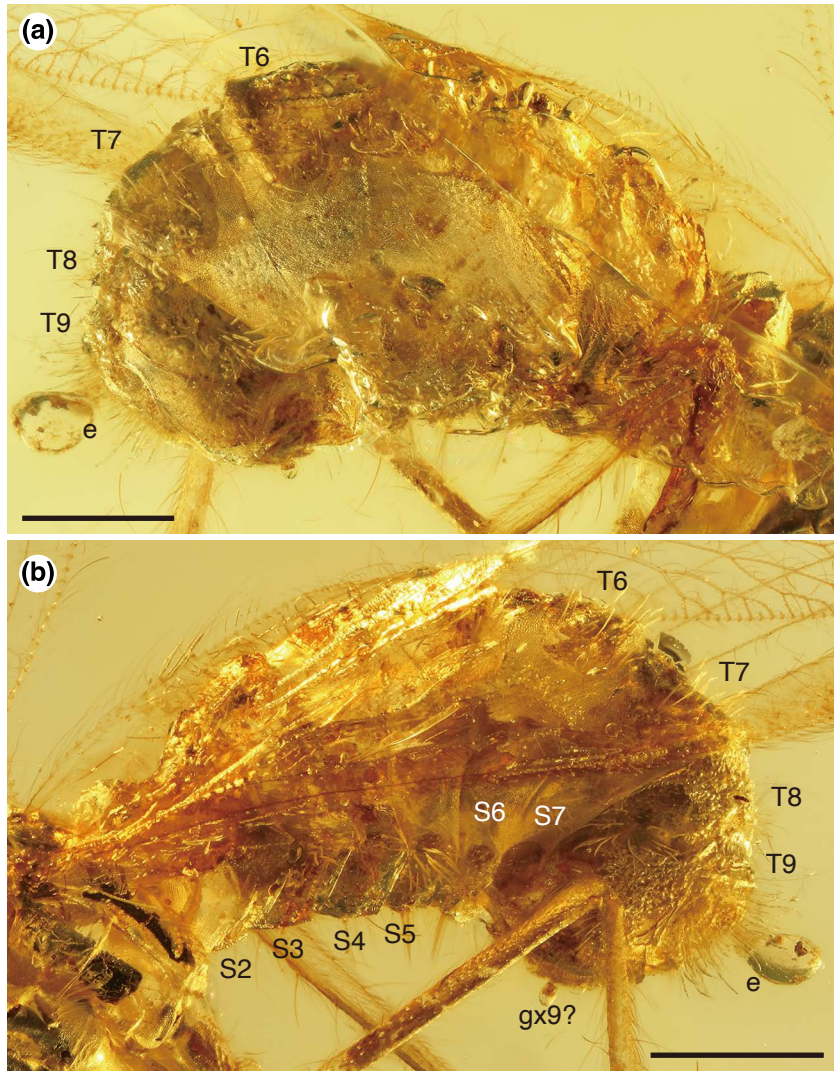


Fig. S3. Abdomen of *Acanthoberotha cuspis* gen. et sp. nov. (holotype, AMNH Bu-SY24) in mid-Cretaceous amber from northern Myanmar. (a) right lateral view; (b) left lateral view. Abbreviations: e, ectoproct; gx9, gonocoxite 9; S2–S7, sternite 2–7; T6–T9, tergite 6–9. Scale bars represent 1.0 mm.

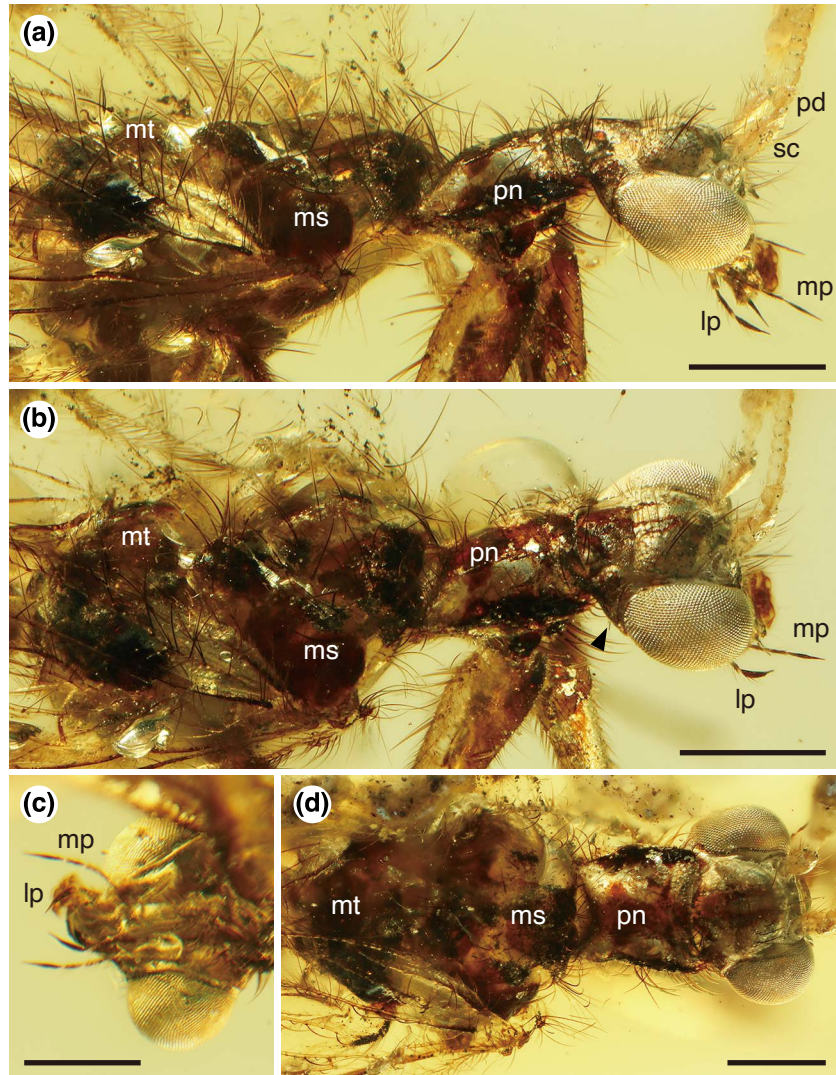


Fig. S4. Head and thorax of *Astioberotha falcipes* gen. et sp. nov. (holotype, AMNH Bu-SY25) in mid-Cretaceous amber from northern Myanmar. (a) right lateral view; (b) latero-dorsal view, arrow showing right postocular lobe; (c) head, ventral view; (d) thorax, dorsal view. Abbreviations: lp, labial palpus; ml, maxillary palpus; mps, mesoprescutum; mss, mesoscutum; mst, mesoscutellum; pd, pedicel; pn, pronotum; sc, scape. Scale bars represent 0.5 mm.

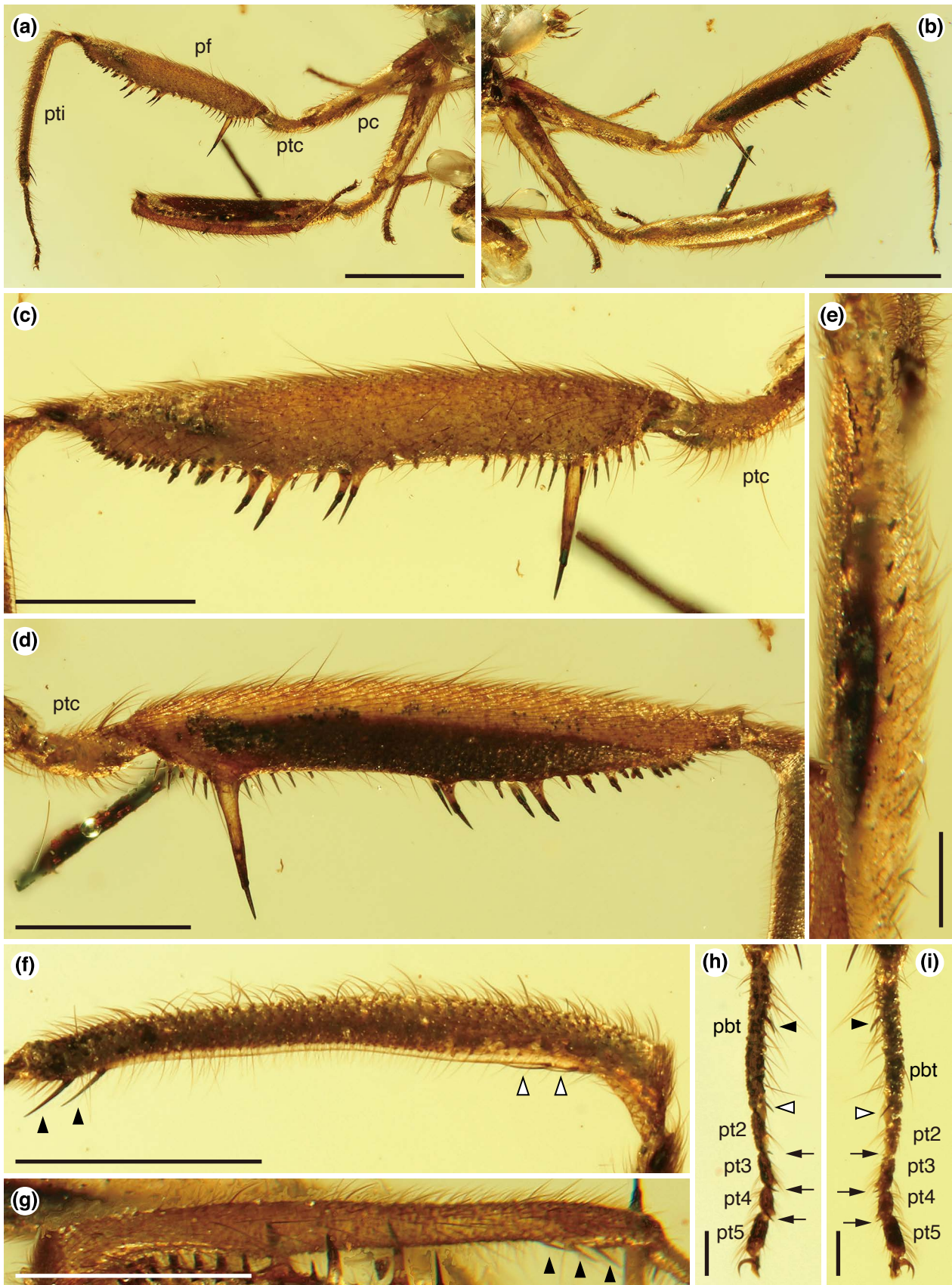


Fig. S5. Forelegs of *Astioberotha falcipes* gen. et sp. nov. (holotype, AMNH Bu-SY25) in mid-Cretaceous amber from northern Myanmar. (a) left lateral view; (b) right lateral view; (c) left profemur, left lateral (outer) view; (d) left profemur, right lateral (inner) view; (e) left profemur, ventral view; (f) left protibia, open arrows showing slightly protrusion and arrows showing bearing spines; (g) right protibia, arrows showing bearing spines; (h) left protarsus, left lateral (outer) view, arrow showing small spine on middle ventral ridge in probasitarsus, open arrow showing short spine distally in probasitarsus and line arrows showing second to fourth protarsomere with two short spines distally; (i) left protarsus, right lateral (inner) view, arrow showing small spine on middle ventral ridge in probasitarsus, open arrow showing short spine distally in probasitarsus and line arrows showing second to fourth protarsomere with two short spines distally. Abbreviations: pbt, probasitarsus; pt2–5, protarsomere 2–5. Abbreviations: pbt, probasitarsus; pc, procoxa; pf, profemur; pt2–5, protarsomere 2–5; ptc, protochoanter; pti, protibia. Scale bars represent 1.0 mm (a, b); 0.5 mm (c, d, f, g); 0.2 mm (e, h, I).

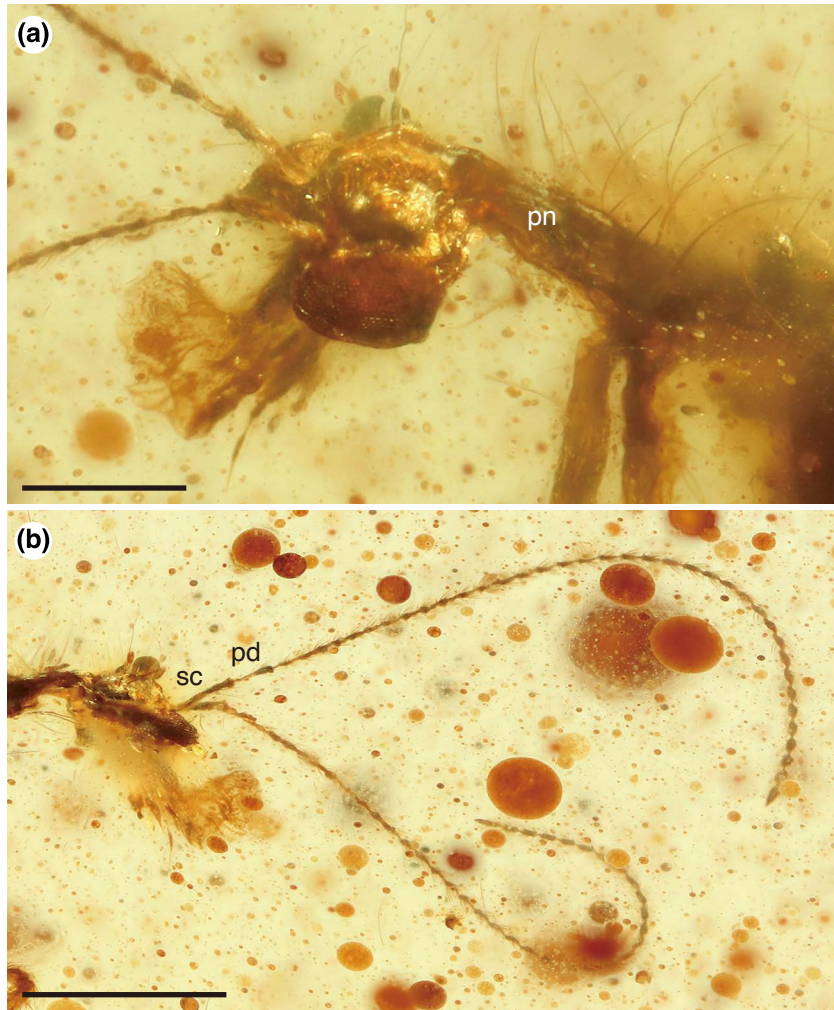


Fig. S6. Head and thorax of *Stygioberotha siculifera* gen. et sp. nov. (holotype, AMNH Bu-SY26) in mid-Cretaceous amber from northern Myanmar. (a) head and pronotum, left latero-dorsal view; (b) antenna, right lateral view. Abbreviations: pd, pedicel; pn, pronotum; sc, scape. Scale bars represent 0.2 mm (a); 0.5 mm (b).



Fig. S7. Head of *Uranoberotha chariessa* gen. et sp. nov. (holotype, AMNH Bu-SY19) in mid-Cretaceous amber from northern Myanmar. (a) left latero-dorsal view; (b) right latero-ventral view; (c) antenna, arrow showing left postocular lobe. Abbreviations: lp, labial palpus; ml, maxillary palpus; pd, pedicel; pn, pronotum; sc, scape. Scale bars represent 0.2 mm (a, b); 0.5 mm (c).

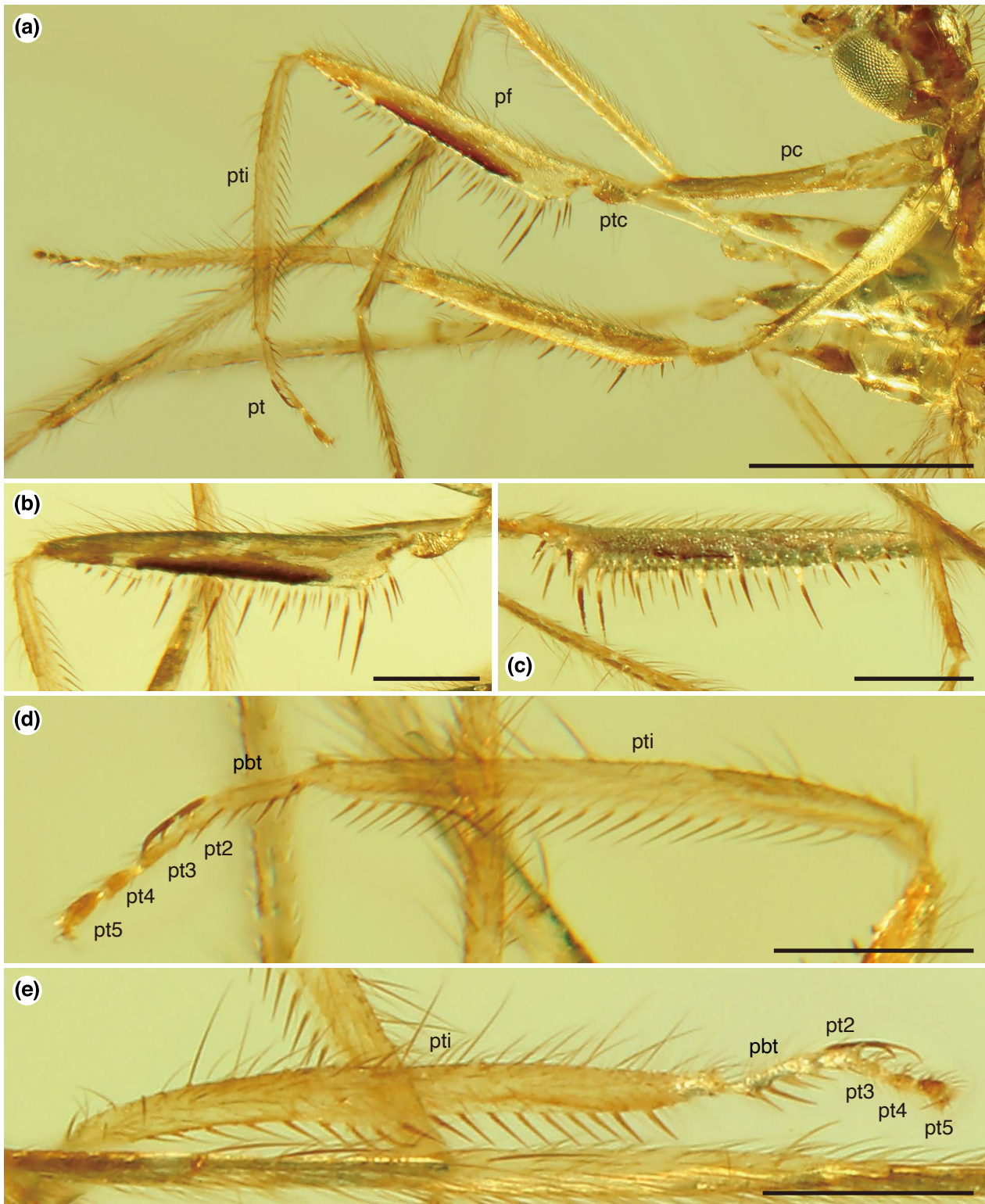


Fig. S8. Forelegs of *Uranoberothena chariessa* gen. et sp. nov. (holotype, AMNH Bu-SY19) in mid-Cretaceous amber from northern Myanmar. (a) left lateral view; (b) right profemur, left lateral (inner) view; (c) left profemur, latero-ventral view; (d) right protibia and protarsus; (e) left protibia and protarsus. Abbreviations: pbt, probasitarsus; pt2–5, protarsomere 2–5. Abbreviations: pbt, probasitarsus; pc, procoxa; pf, profemur; pt2–5, protarsomere 2–5; ptc, protrochanter; pti, protibia. Scale bars represent 0.5 mm (a); 0.2 mm (b, c, d, e).



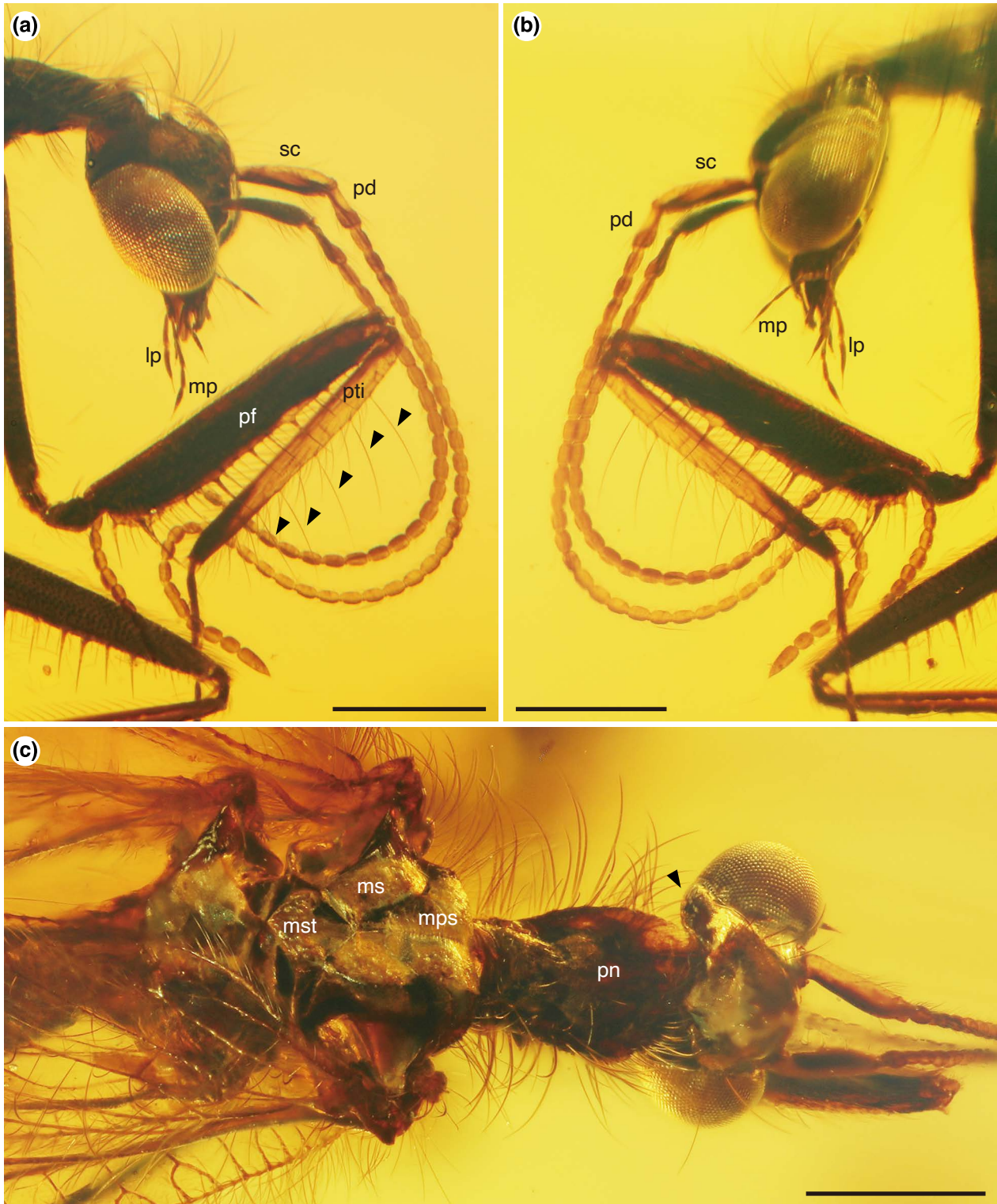


Fig. S9. Head, thorax, and forelegs of *Creagroparaberotha cuneata* sp. nov. (holotype, AMNH Bu-SY20) in mid-Cretaceous amber from northern Myanmar. (a) head and foreleg, right lateral view, arrow showing pairs of long setae on dorsal edge of protibia; (b) head and foreleg left lateral view; (c) head and thorax, dorsal view, arrow showing left postocular lobe. Abbreviations: lp, labial palpus; ml, maxillary palpus; mps, mesoprescutum; mss, mesoscutum; mst, mesoscutellum; pd, pedicel; pf, profemur; pn, pronotum; pti, protibia; sc, scape. Scale bars represent 0.5 mm.

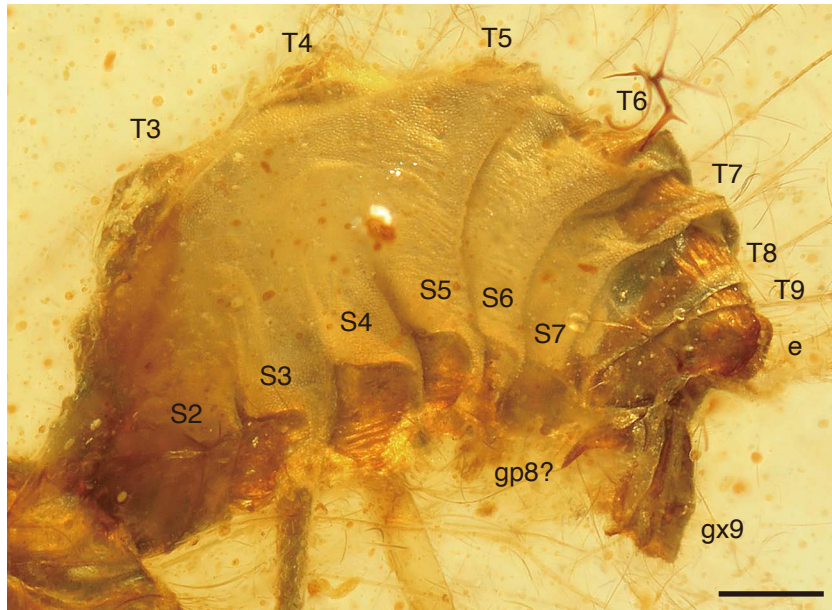


Fig. S10. Left lateral view abdomen of *Micromantispa galeata* sp. nov. (holotype, AMNH Bu-SY21) in mid-Cretaceous amber from northern Myanmar. Abbreviations: e, ectoproct; gp8, gonapophysis 8; gx9, gonocoxites 9; S2–S7, sternite 2–7; T3–T9, tergite 2–9. Scale bars represent 0.2 mm.