

# Ordovician turbidites and black shales of Bennett Island (De Long Islands, Russian Arctic), and their significance for Arctic correlations and palaeogeography

MARIA K. DANUKALOVA, ALEXANDER B. KUZMICHEV, NIKOLAI V. SENNIKOV AND TATIANA YU. TOLMACHEVA

## Supplementary Material 2 (Colour versions of Figures 2-4)

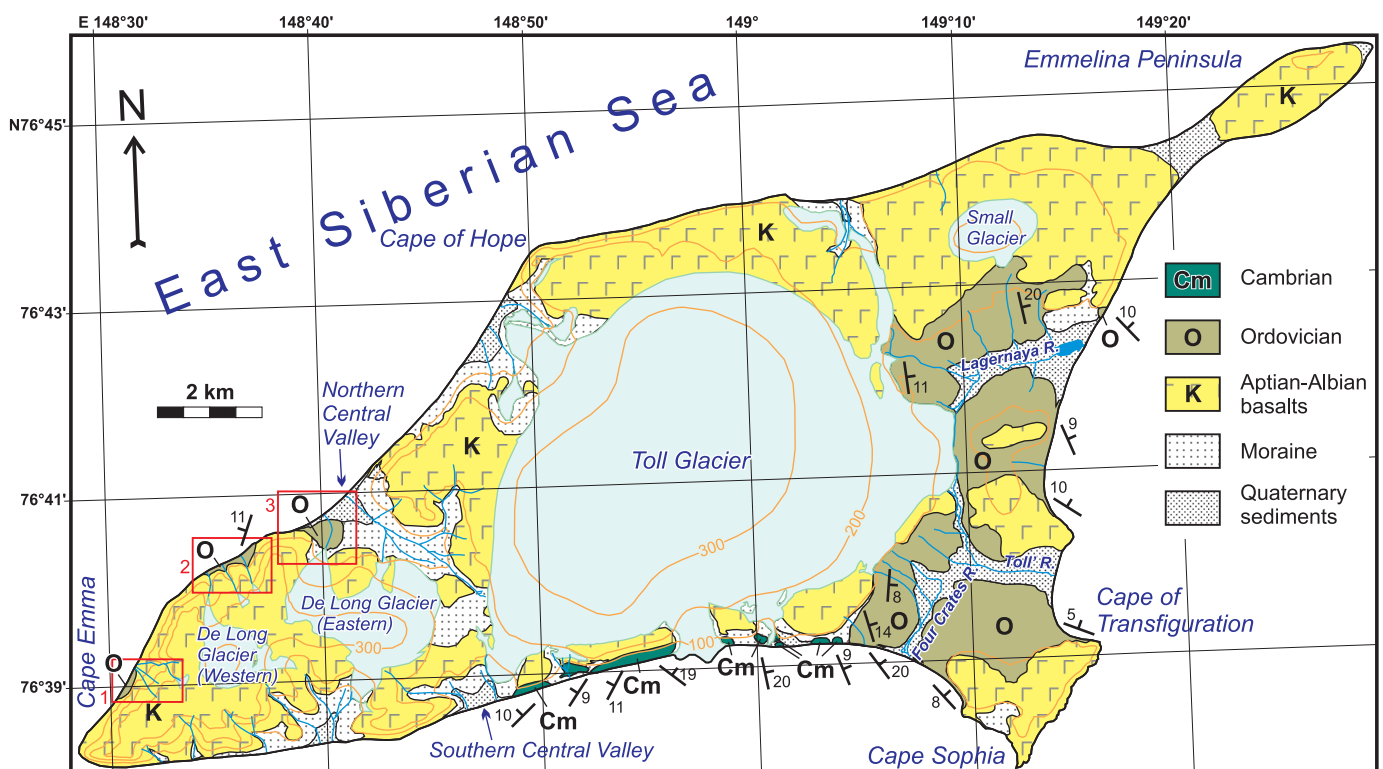


Fig. 2

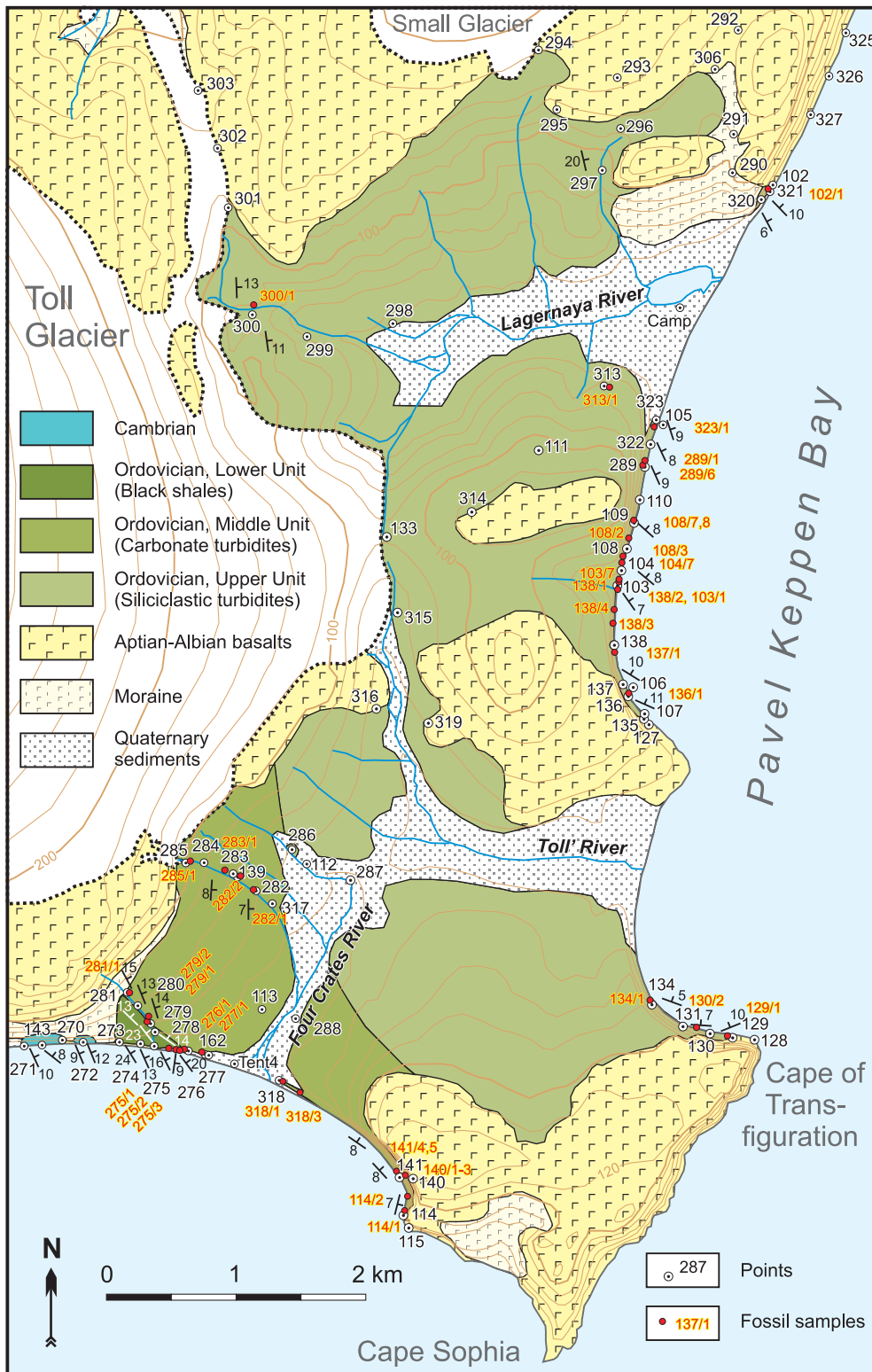


Fig. 3

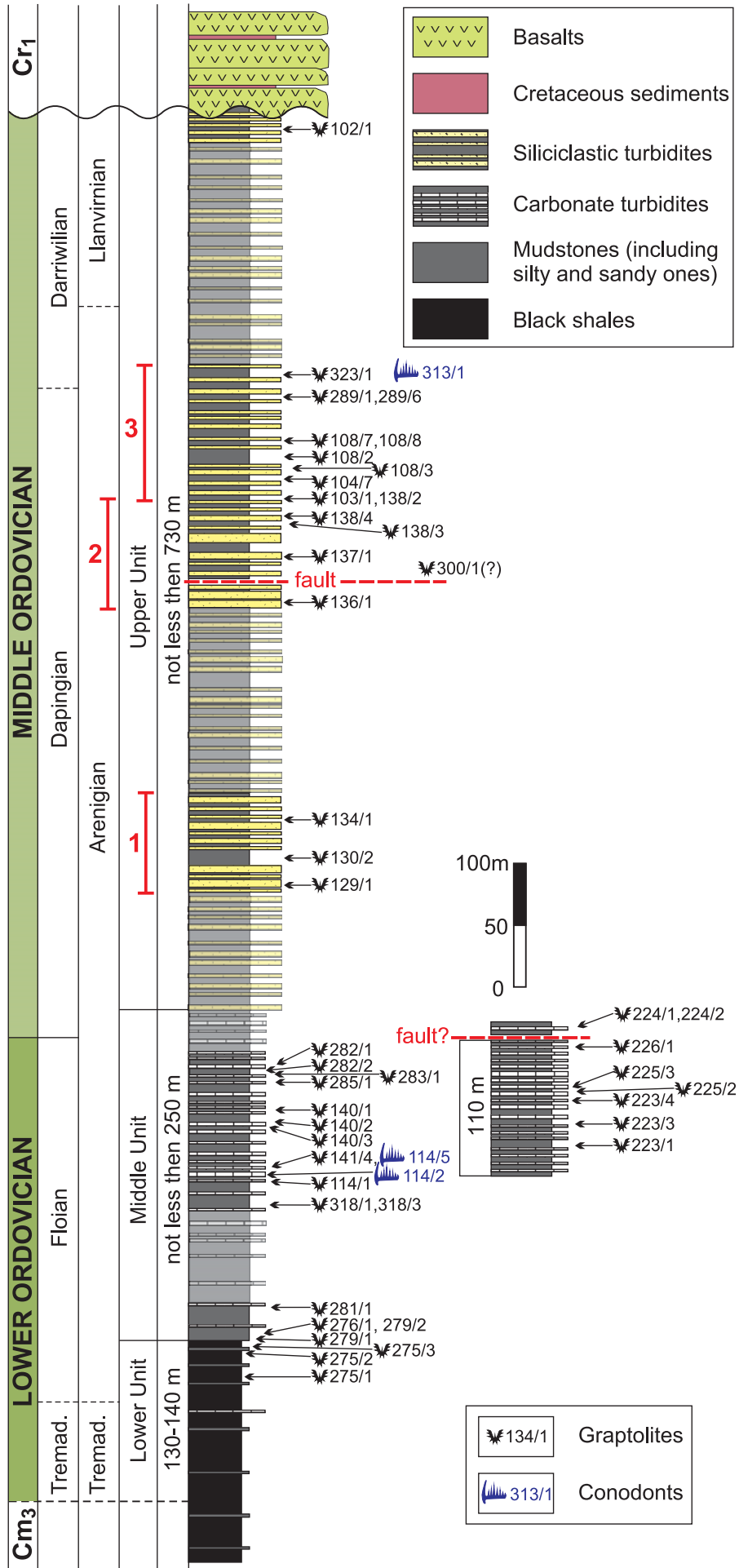


Fig. 4