

Data supplement

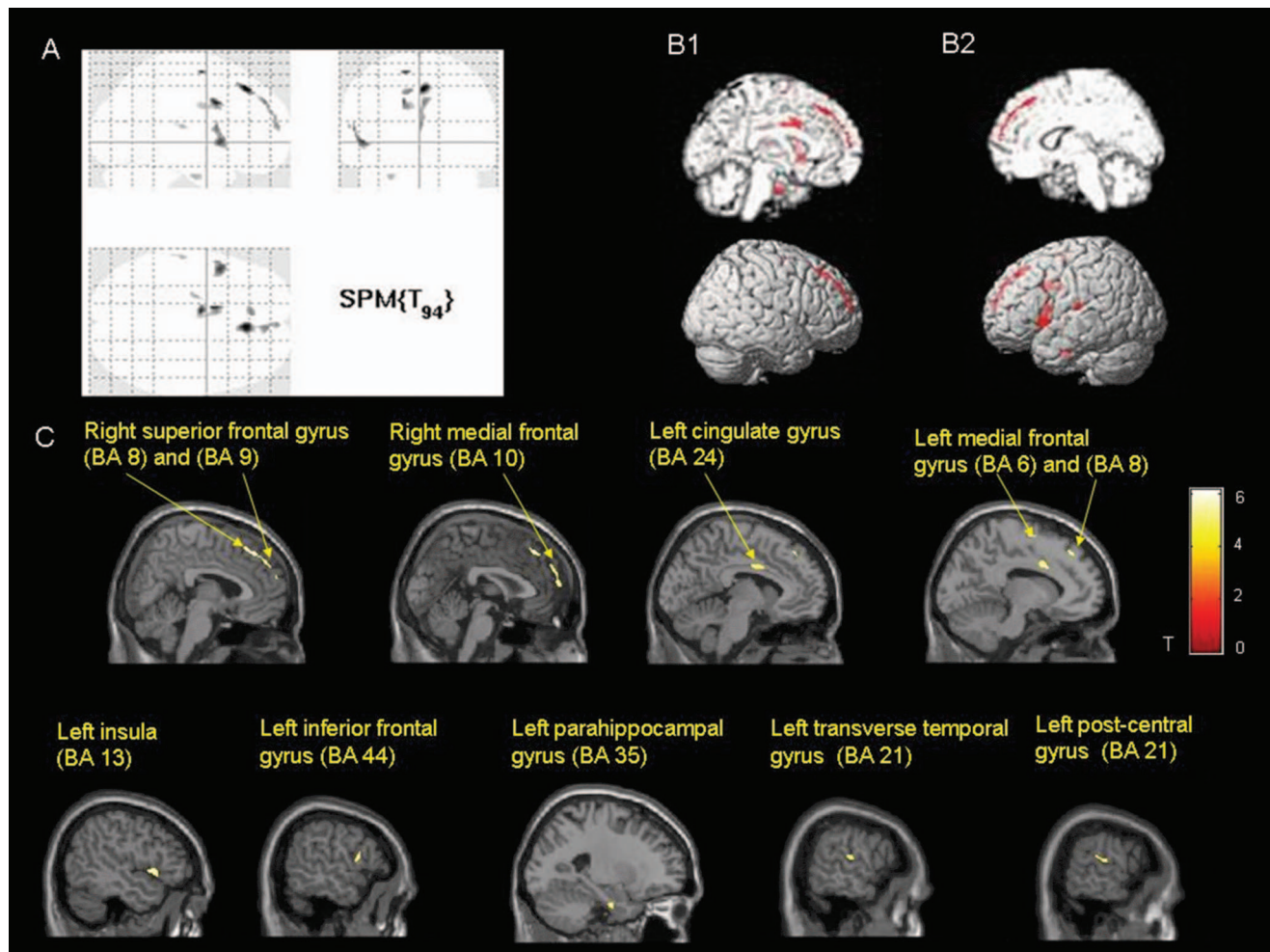


Fig. DS1 Regions showing reduced grey matter volume in treatment-resistant/chronic group v. healthy control group, $P = 0.05_{FWE-Corr}$. Results are presented as a 'glass brain' and the MNI152 brain template (A) in render mode of left and right side (B1 and B2 respectively; sagittal view). Areas with a significant volume reduction appear in yellow superimposed in a canonical image named 'single_subj_T1.nii' (C).

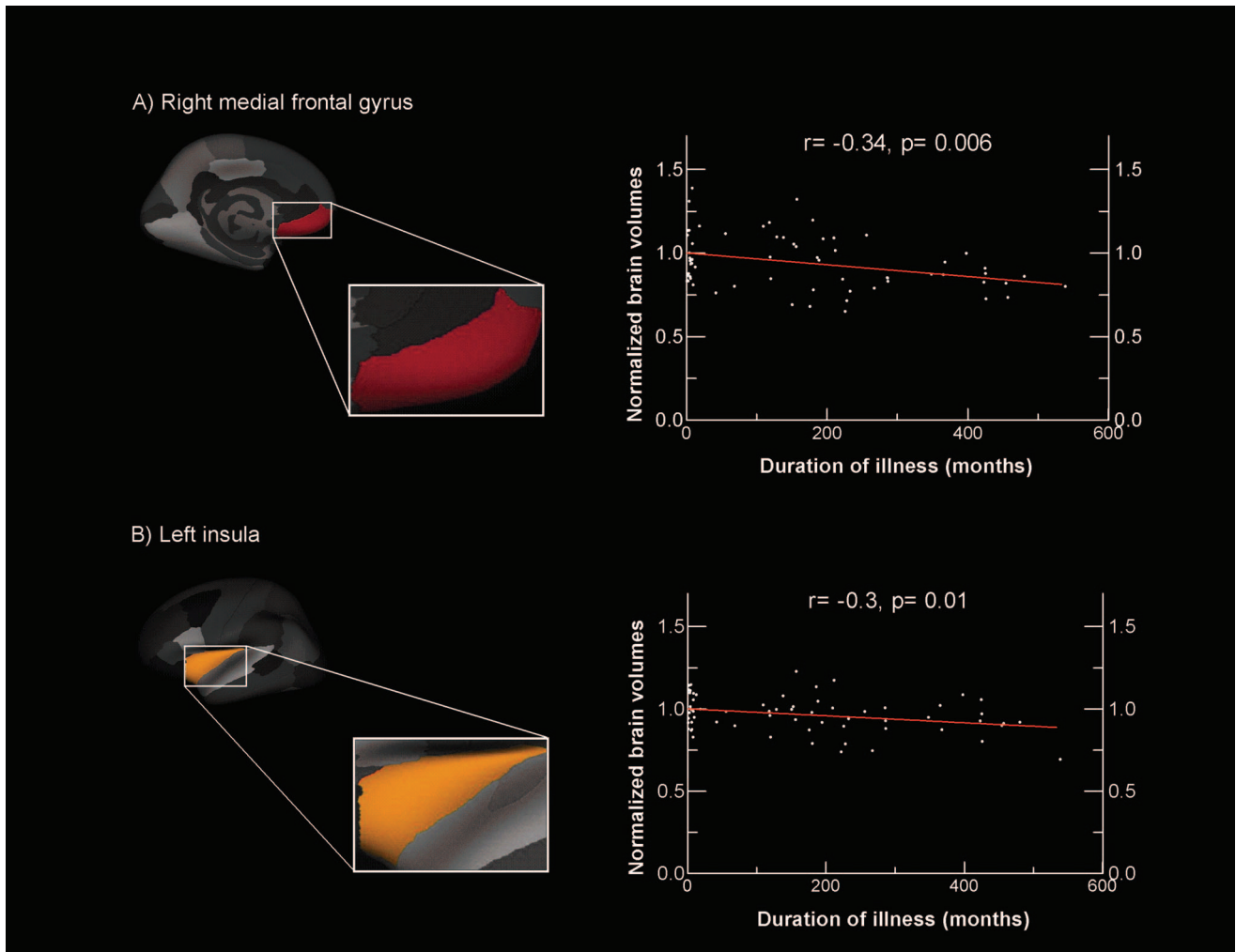


Fig. DS2 On left-hand side: medial (A) and lateral (B) sagittal view of FreeSurfer inflated cortical surfaces. On right-hand side: significant correlations between normalised volumes of brain areas obtained by means of FreeSurfer segmentation (y axis) and duration of illness (x axis) are shown with regression line in red ($n = 64$).

The interception of the regression line (x axis) was used as scaling factor to obtain normalised brain volumes.